



Property Description

A four-story, brick office building with concrete columns, floors and roof structure. Originally built in 1923 and completely restored, Hudson Essex Building offers Class "A" interiors with translucent glass demising walls, exposed ceilings and security access throughout the building. With free indoor parking, a full service lease and responsive building management, Hudson Essex Building is an ideal office location.

Property Highlights

- OFFICE SPACE FOR LEASE
- Free Indoor Garage Parking
- Historic Automobile Alley
- Convenient Interstate Access
- Bullpen/ Break Area
- 8 Offices

Offering Summary

Lease Rate:	\$19.00 SF/yr (Full Service)
Available SF:	3,381 - 4,219 SF
Building Size:	30,890 SF

Demographics	1 Mile	5 Miles	10 Miles
Total Households	2,941	76,051	256,688
Total Population	6,053	194,396	639,933
Average HH Income	\$59,917	\$44,437	\$53,018

RICK PRITCHETT, CCIM

405.605.0831

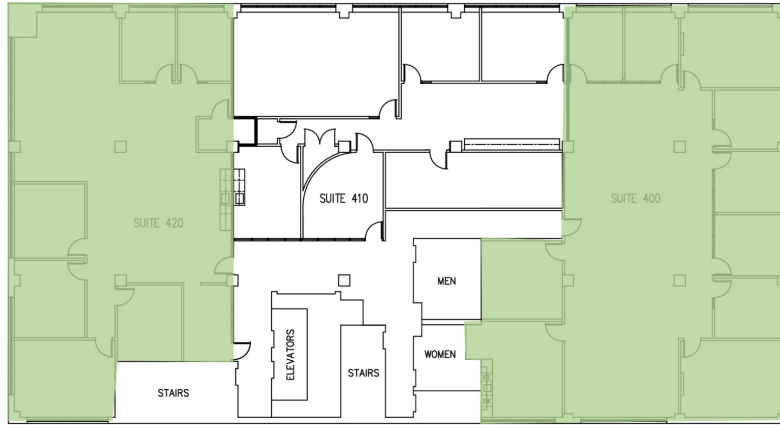
rick@precorrealty.com




PRECOR
REALTY ADVISORS

PRECOR REALTY ADVISORS, INC | 825 N. BROADWAY, SUITE 300, OKLAHOMA CITY, OK 73102 | 405.605.0825 | PRECORREALTY.COM

The information above has been obtained from sources believed reliable. While we do not doubt its accuracy, PrecorRuffin, LLC has not verified it and makes no guarantee, warranty or representation about it. It is your responsibility to independently confirm its accuracy.




FOURTH FLOOR PLAN
 SCALE: 1/8" = 1'-0"
 HUDSON — ESSEX LOFT OFFICES
OKLAHOMA CITY, OK

Legend

Available

Lease Information

Lease Type:	Full Service	Lease Term:	Negotiable
Total Space:	3,381 - 4,219 SF	Lease Rate:	\$19.00 SF/yr

Available Spaces

Suite	Tenant	Size	Type	Rate	Description
Suite 400	Available	4,219 SF	Full Service	\$19.00 SF/yr	-
420	Available	3,381 SF	Full Service	\$19.00 SF/yr	-

RICK PRITCHETT, CCIM

405.605.0831

rick@precorreality.com



PRECOR
REALTY ADVISORS

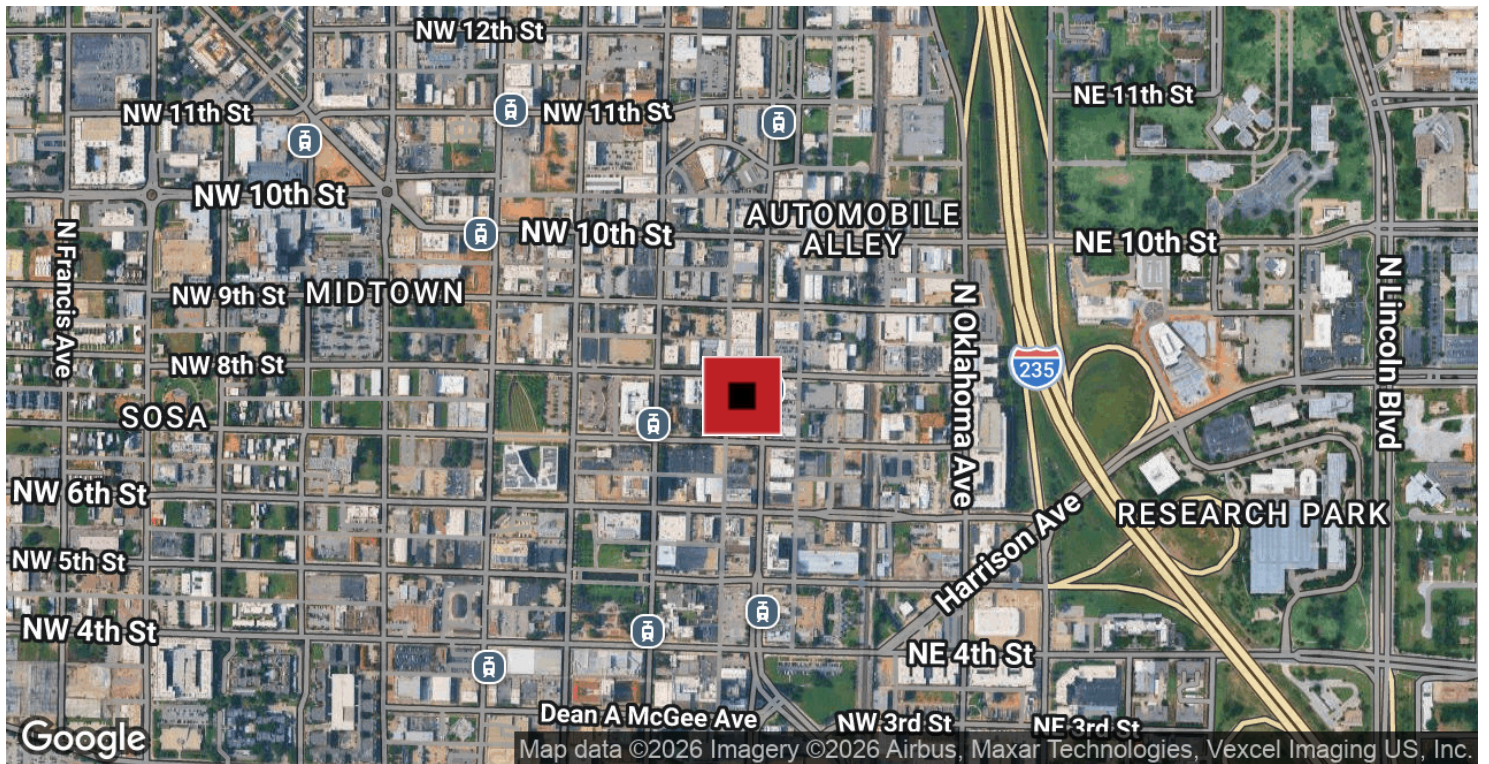
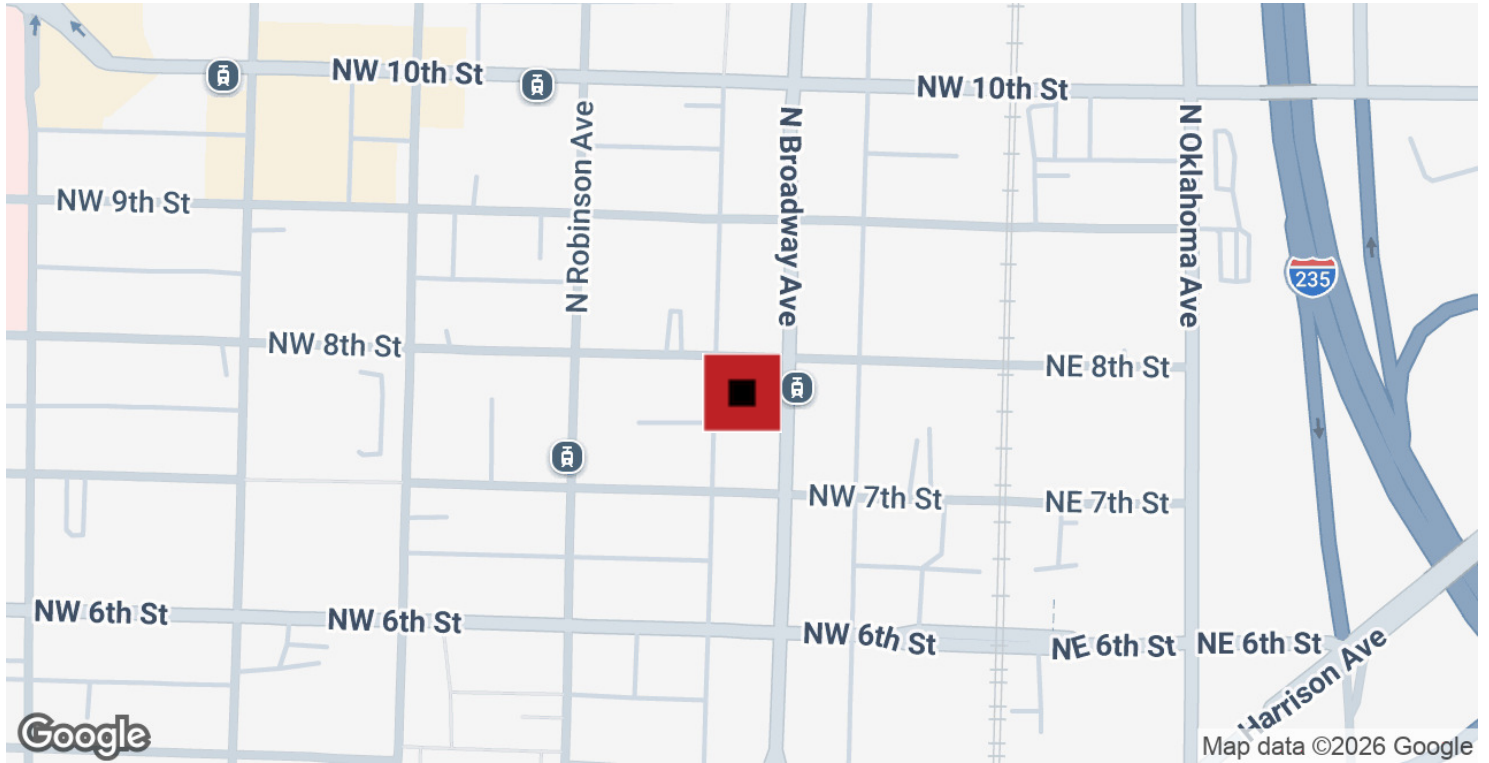
PRECOR REALTY ADVISORS, INC | 825 N. BROADWAY, SUITE 300, OKLAHOMA CITY, OK 73102 | 405.605.0825 | PRECORREALTY.COM

The information above has been obtained from sources believed reliable. While we do not doubt its accuracy, PrecorRuffin, LLC has not verified it and makes no guarantee, warranty or representation about it. It is your responsibility to independently confirm its accuracy.

For Lease

825 N. BROADWAY AVENUE

HUDSON ESSEX BUILDING



RICK PRITCHETT, CCIM

405.605.0831

rick@precorrealty.com



PRECOR
REALTY ADVISORS

PRECOR REALTY ADVISORS, INC | 825 N. BROADWAY, SUITE 300, OKLAHOMA CITY, OK 73102 | 405.605.0825 | PRECORREALTY.COM

The information above has been obtained from sources believed reliable. While we do not doubt its accuracy, PrecorRuffin, LLC has not verified it and makes no guarantee, warranty or representation about it. It is your responsibility to independently confirm its accuracy.