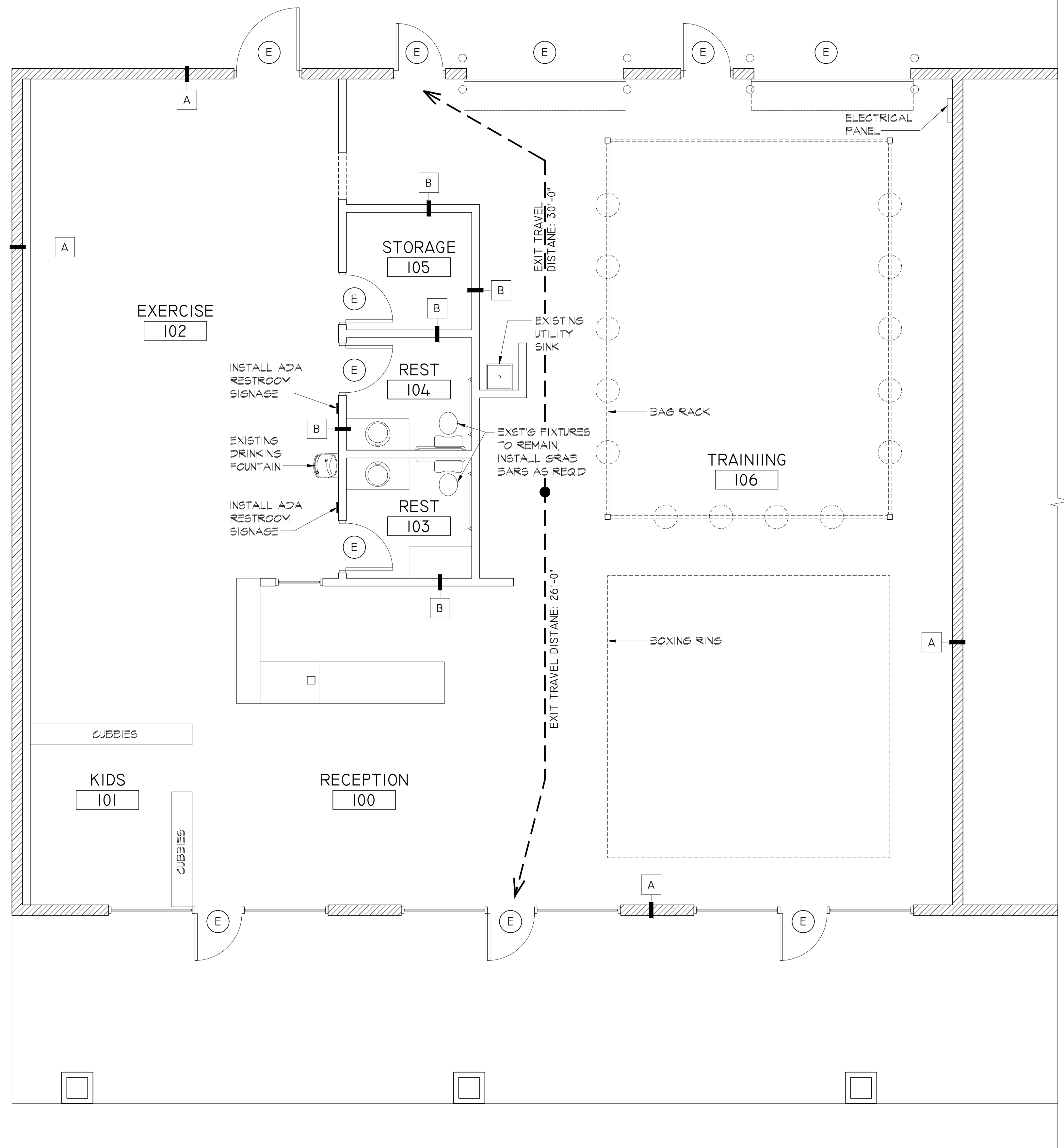
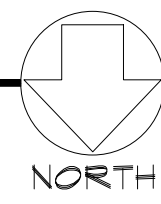


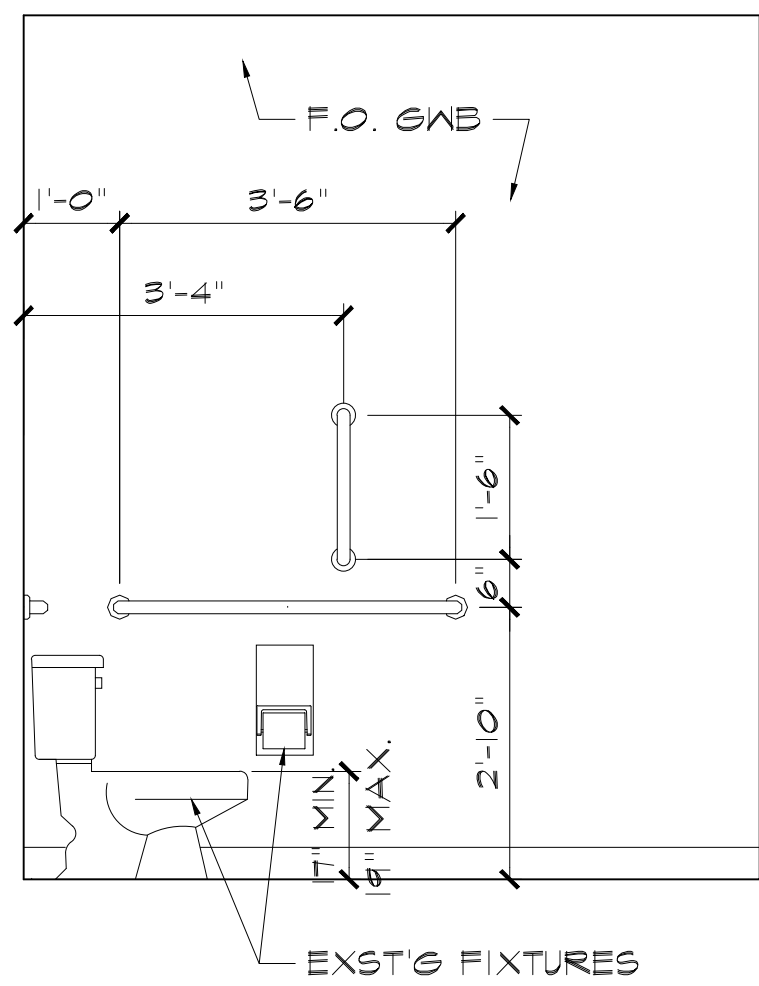
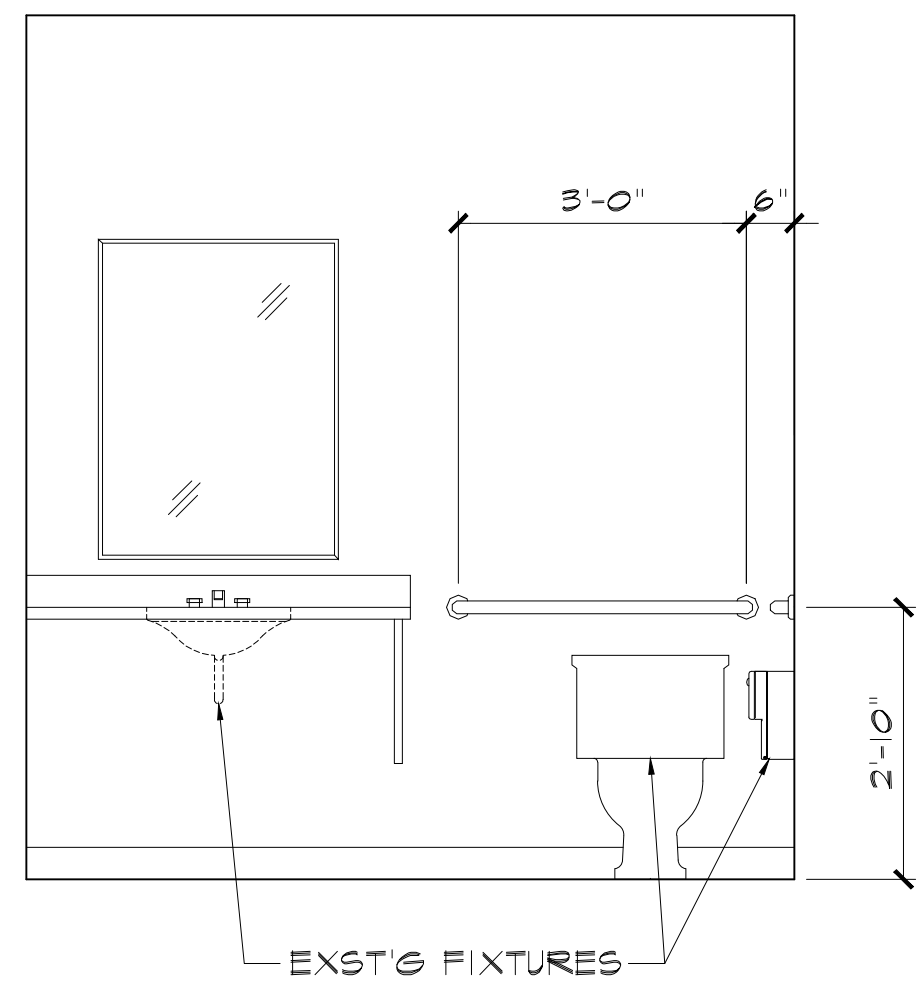
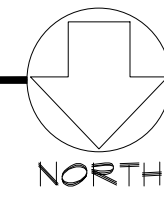
2 BUILDING KEY PLAN

A1.0 SCALE: 3/32"=1'-0"



1 EXISTING FLOOR PLAN

A1.0 SCALE: 1/4"=1'-0"

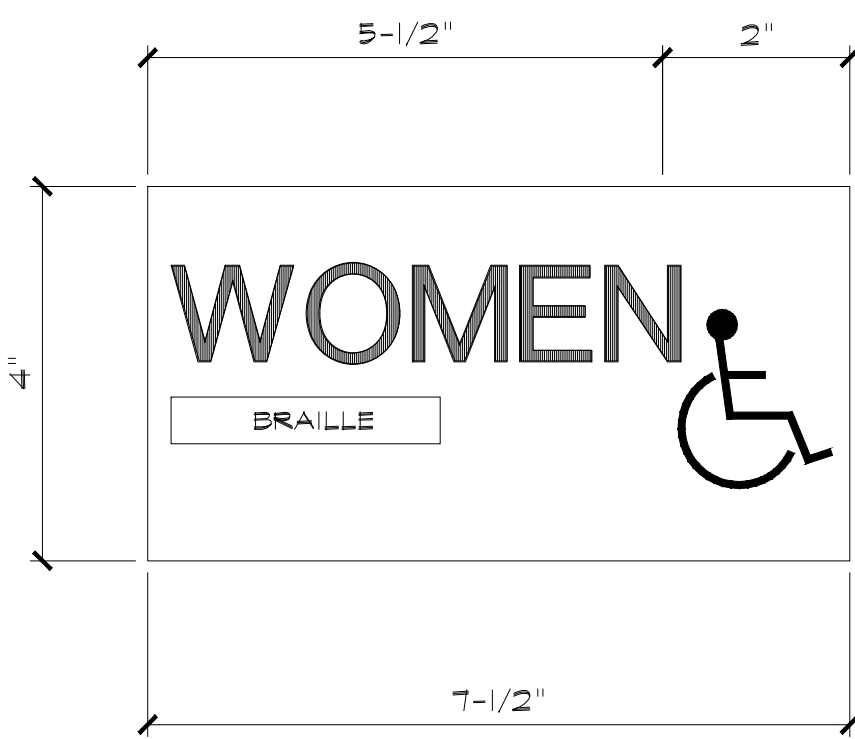


4 RESTROOM ELEVATION

A1.0 SCALE: 1/2"=1'-0"

3 RESTROOM ELEVATION

A1.0 SCALE: 1/2"=1'-0"



- A. LETTERING: HELVETICA MEDIUM
- B. BACKGROUND COLOR: TBD
- C. TYPE COLOR: TBD
- D. MOUNTING HEIGHT: TACTILE CHARACTERS SHALL BE 48" MIN. ABOVE THE FLOOR, MEASURED TO THE BASELINE OF THE LOWEST CHARACTER
- E. MOUNTING METHOD: VINYL TAPE
- F. THICKNESS: 1/4"
- G. FABRICATION METHOD: NEW PLEXIGLAS SIGN WITH SUBSURFACE GRAPHICS AND BACK SPRAYED.
- H. APPLICABLE CODES: - ADA, CABO-ANSI, UBC
- I. OTHER: 1/32" RAISED LETTERING MUST BE 3/4" HIGH WITH 1/4" MINIMUM STROKE.



5 TYPICAL ADA SIGNAGE

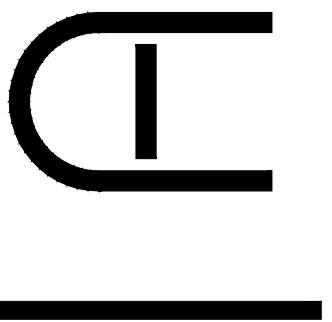
A1.0 SCALE: 1/2"=1'-0"

WALL TYPES	
A	EXISTING CMU WALL
B	EXISTING STEEL STUD WALL

COPYRIGHT © Arch, pllc 2022. DRAWINGS MAY NOT BE REUSED WITHOUT THE WRITTEN PERMISSION OF THE ARCHITECT



Arch, pllc
 Architecture + Planning
 537 E. Forest Ridge Drive
 Meridian, Idaho 83642
 (208) 921.0734



An Occupancy Evaluation for
 Marin Boxing Academy
 Meridian, ID

PROJECT NAME

REVISIONS

DRAWN BY:

RDB

DATE:

9.26.2022

SHEET NUMBER

A1.0