

7523 Southlake Parkway

Jonesboro, GA

Key Facts

Property type	Industrial space
Building size	137,842 SF
Space available	75,000 - 137,842 SF



Contact Us

Learn more about this property or schedule a tour by reaching out to our local investment and leasing officer.

Christopher Merriewether

+1 (904) 864-8438

chris.merriewether@eqtpartners.com

7523 Southlake Parkway

Jonesboro, GA

BUILDING SPECIFICATIONS

Total Building Size: 137,842 SF

Building Space Available: 75,000 - 137,842 SF

Clear Height: 24'

Building Depth: 250'

Truck Court Depth: 110'

Bay Spacing: 40' x 40'

Drive-In Doors: 1

Dock Doors: 23

Auto Parking: 83 spaces

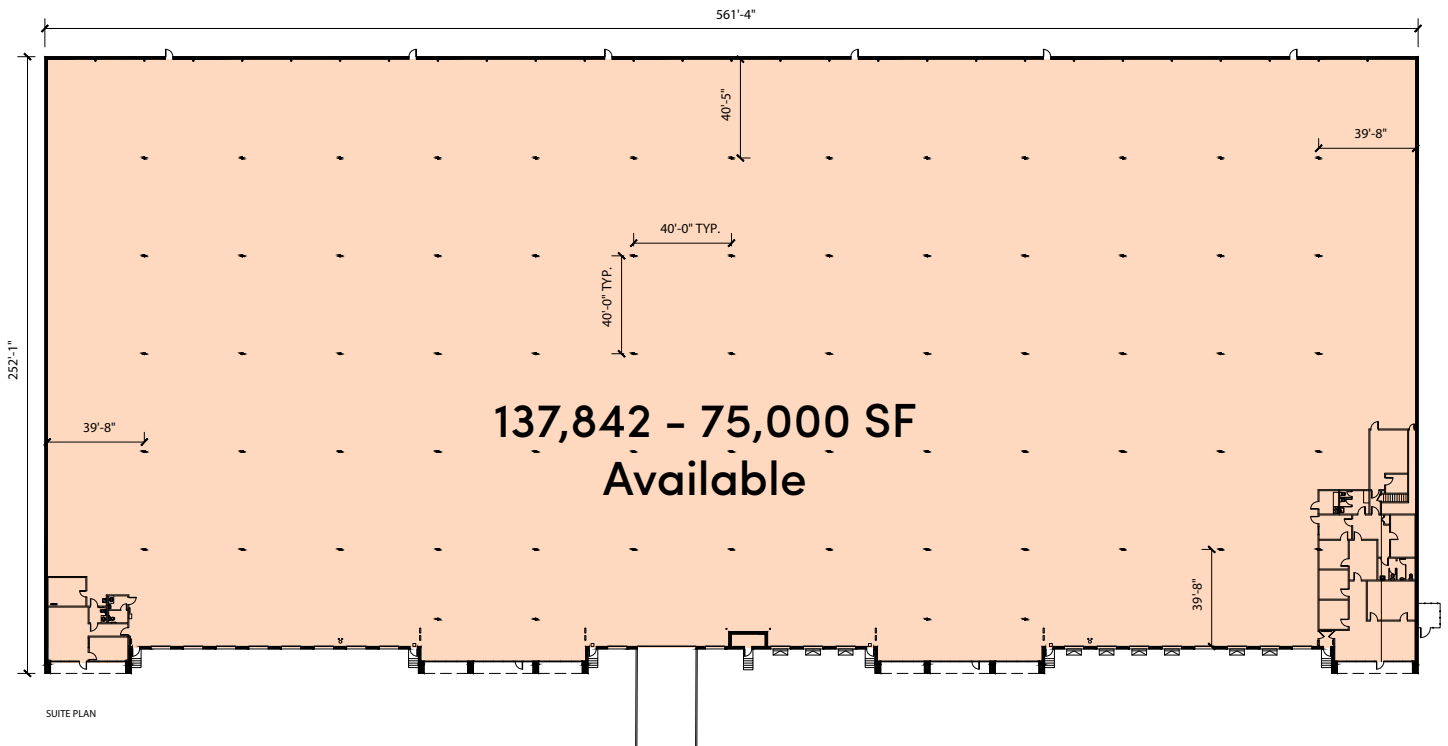
Lighting: LED

Fire Protection: ESFR sprinkler system

Roof: Warranty through 2033

Ability to secure premises

Oversized doors for extra large equipment or other storage needs



Contact Us

Learn more about this property or schedule a tour by reaching out to our local investment and leasing officer.

Christopher Merriewether

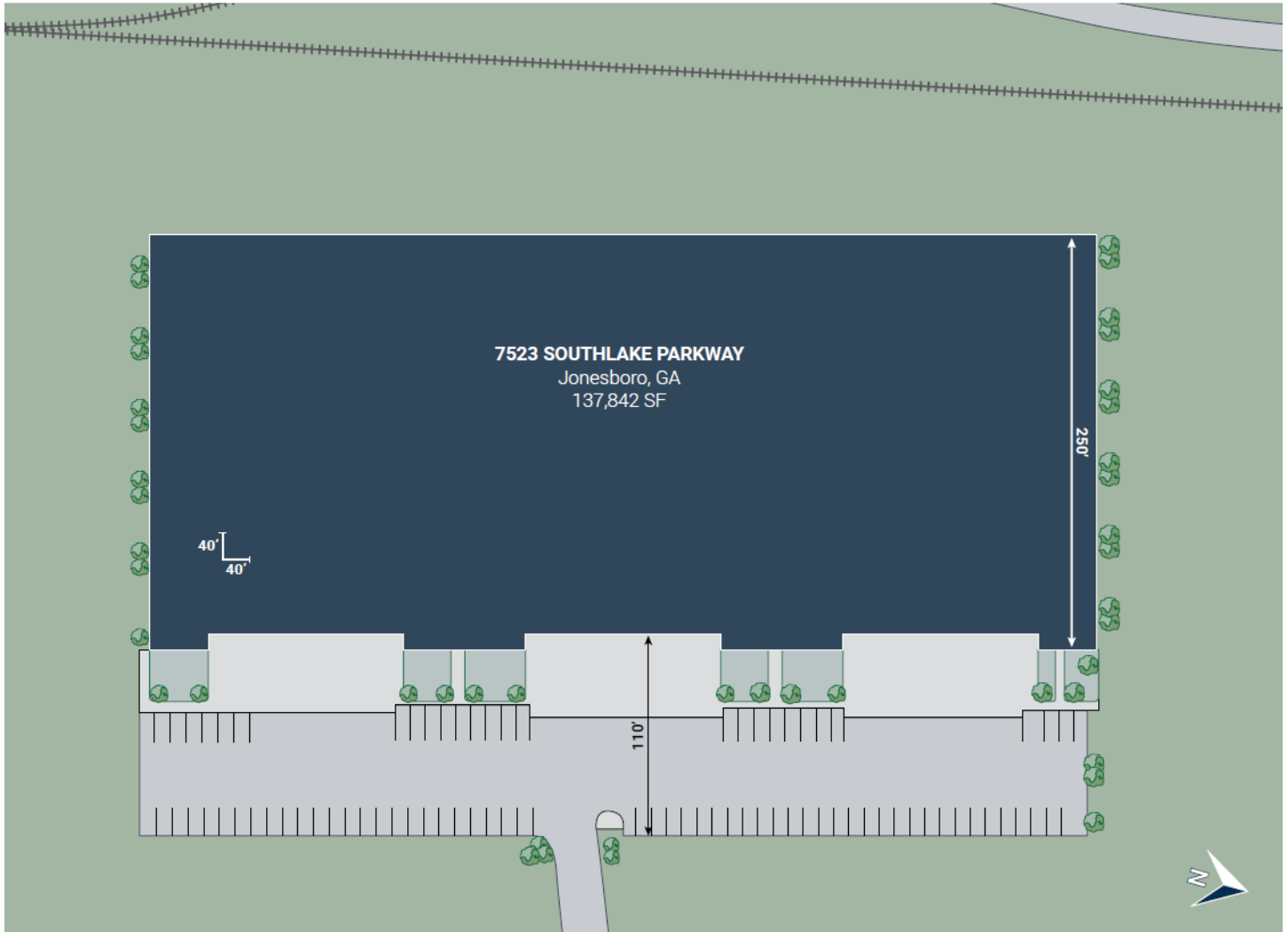
+1 (904) 864-8438

chris.merriewether@eqtpartners.com

7523 Southlake Parkway

Jonesboro, GA

SITE PLAN



Contact Us

Learn more about this property or schedule a tour by reaching out to our local investment and leasing officer.

Christopher Merriewether

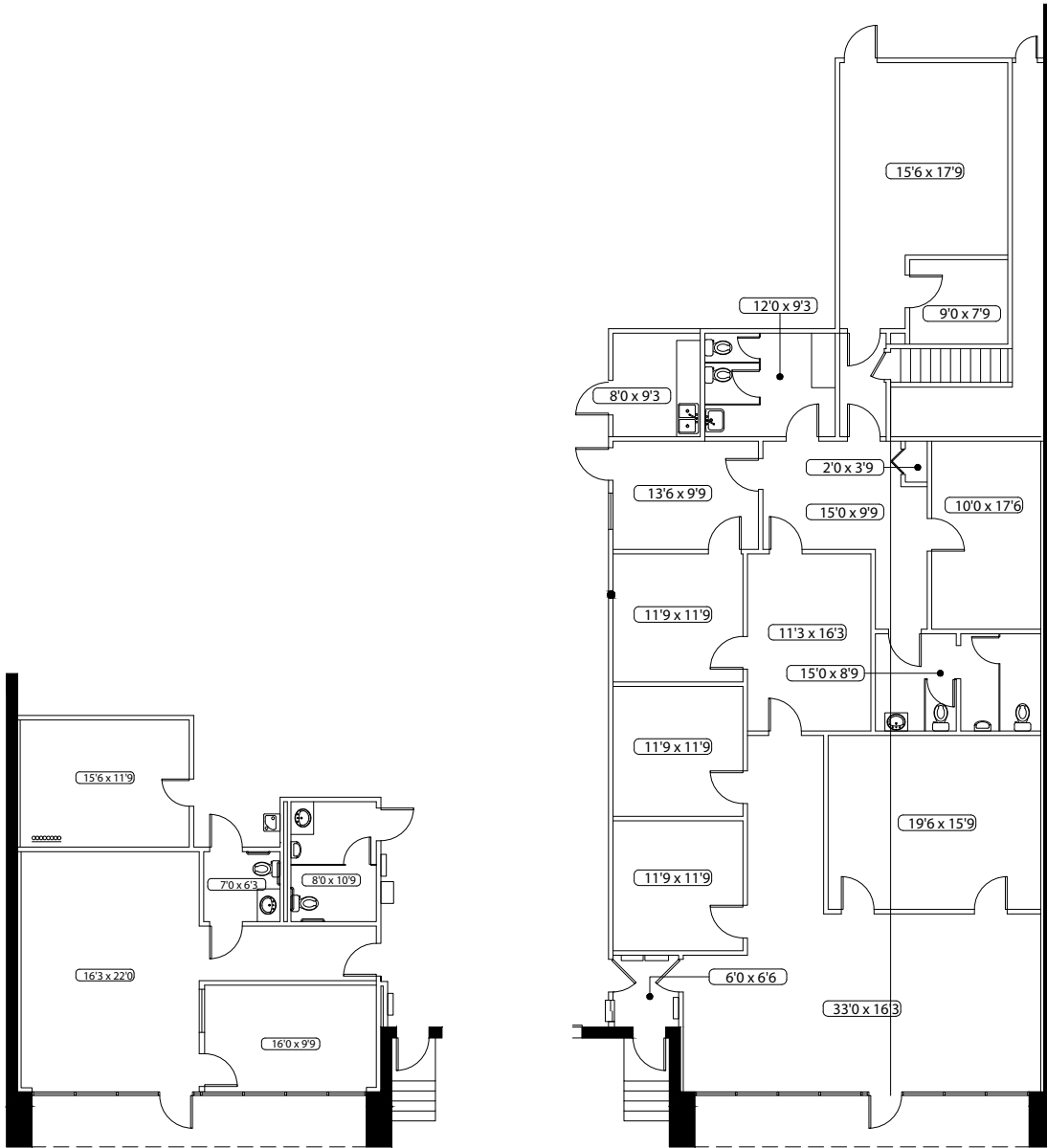
+1 (904) 864-8438

chris.merriewether@eqtpartners.com

7523 Southlake Parkway

Jonesboro, GA

OFFICE PLAN



OFFICE PLAN: 1,041 SF

MAIN OFFICE PLAN: 3,081 SF

Contact Us

Learn more about this property or schedule a tour by reaching out to our local investment and leasing officer.

Christopher Merriewether

+1 (904) 864-8438

chris.merriewether@eqtpartners.com

7523 Southlake Parkway

Jonesboro, GA

LOCATION



Contact Us

Learn more about this property or schedule a tour by reaching out to our local investment and leasing officer.

Christopher Merriewether

+1 (904) 864-8438

chris.merriewether@eqtpartners.com