

For Lease - Bowie, MD
Woodmore Professional Center



11721 Woodmore Road

Bowie, Maryland 20721

Property Description

- 1,575 square feet corner location on the 1st floor
- Excellent Visibility/Access on the corner of Woodmore Rd (Lottsford) and MD 193
- Exterior building signage space available
- Independent HVAC System (no limits on hours of operation)
- Direct access to parking lot
- Abundant Parking
- Can accommodate a variety of uses – Office, Medical, Retail

Demographics

	1 Mile	3 Miles	5 Miles
Total Households	4,284	65,989	203,812
Total Population	1,434	24,017	71,504
Average HH Income	\$194,839	\$156,258	\$136,056



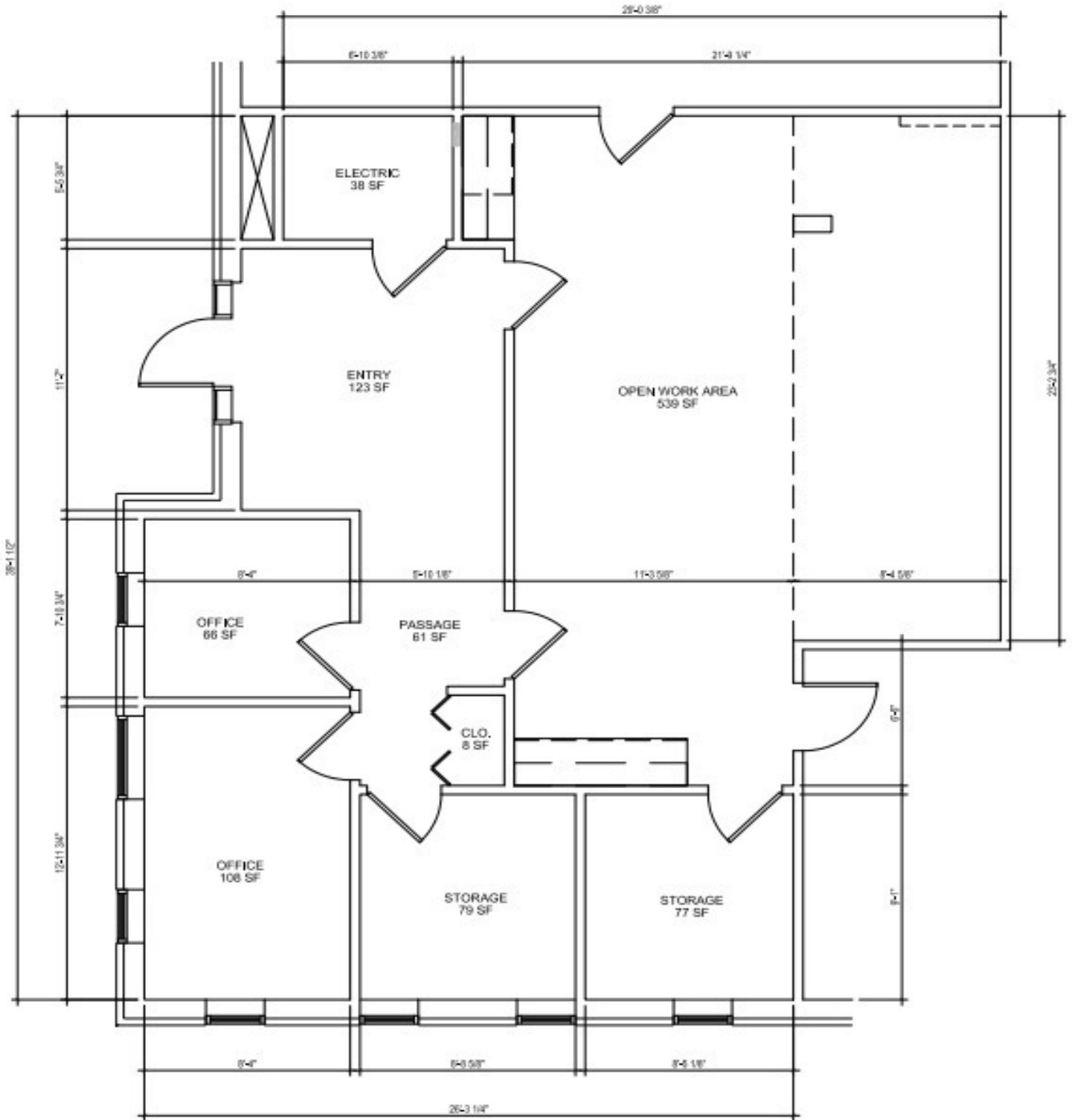
Joseph Palermo

O: 301 918 2916
jpalermo@naimichael.com

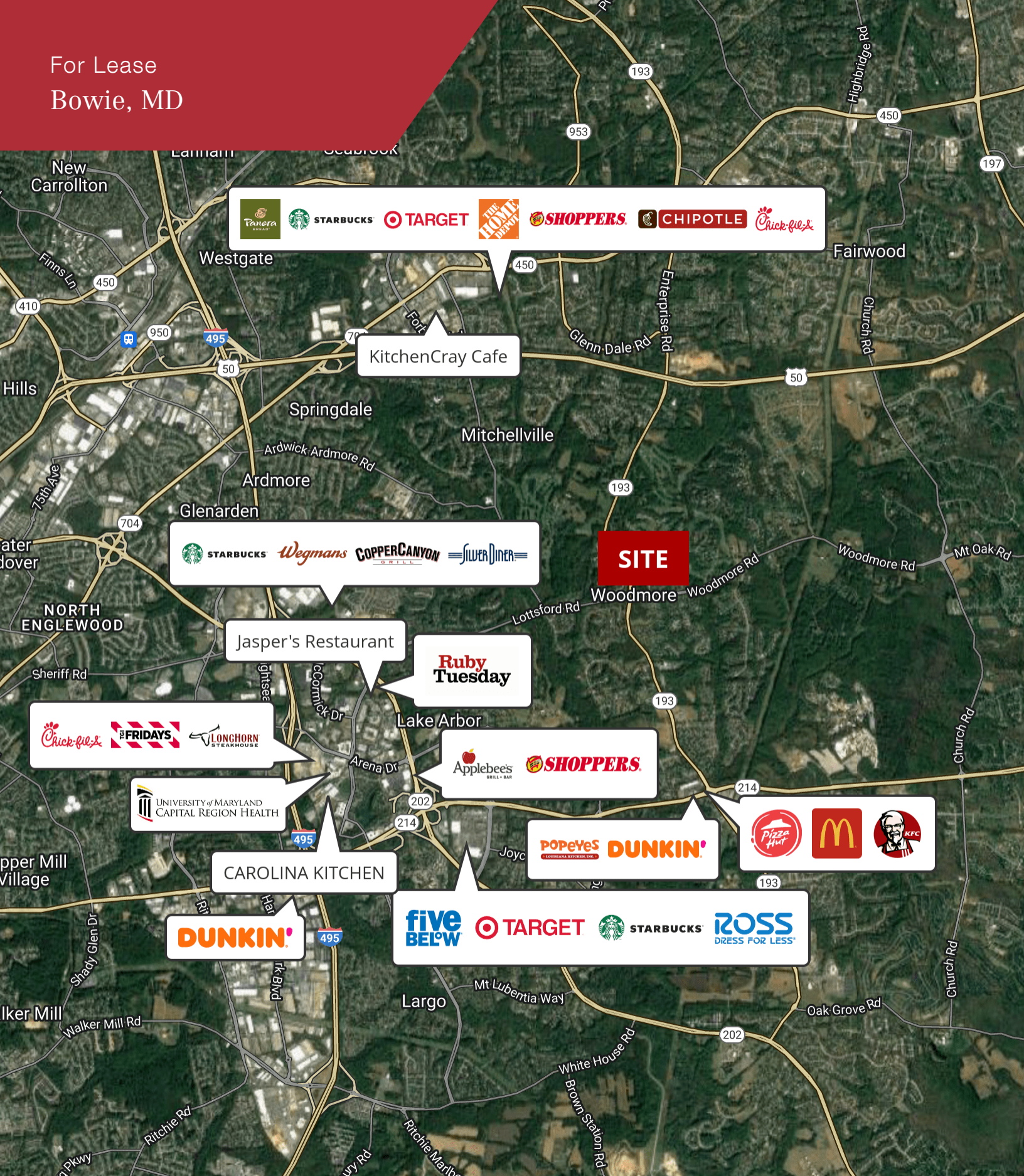


10100 Business Pkwy
Lanham, MD 20706
301 459 4400 tel
www.naimichael.com

For Lease
Bowie, MD



For Lease
Bowie, MD



Map data ©2022 Imagery ©2022, Airbus, CNES / Airbus, Commonwealth of Virginia, District of Columbia (DC GIS), Landsat / Copernicus, Maxar Technologies, Sanborn, U.S. Geological Survey, USDA/FPAC/GEO