



CUSHMAN &
WAKEFIELD

19450

TEXAS HIGHWAY 249

FOR SUBLEASE

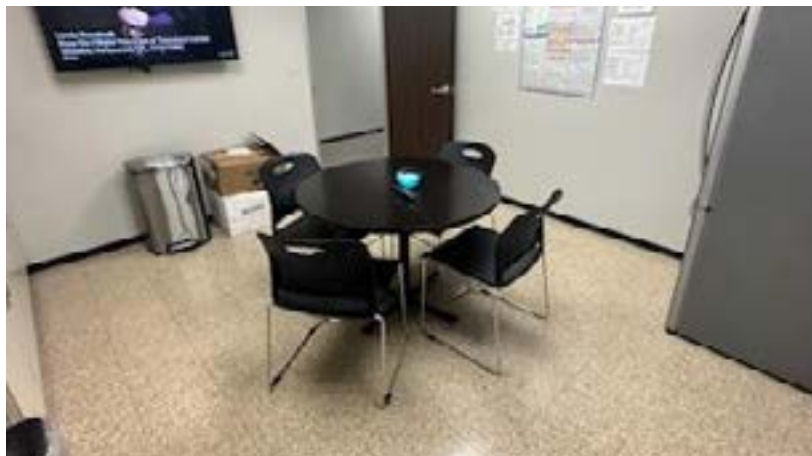
HOUSTON, TX 77070



Property Highlights

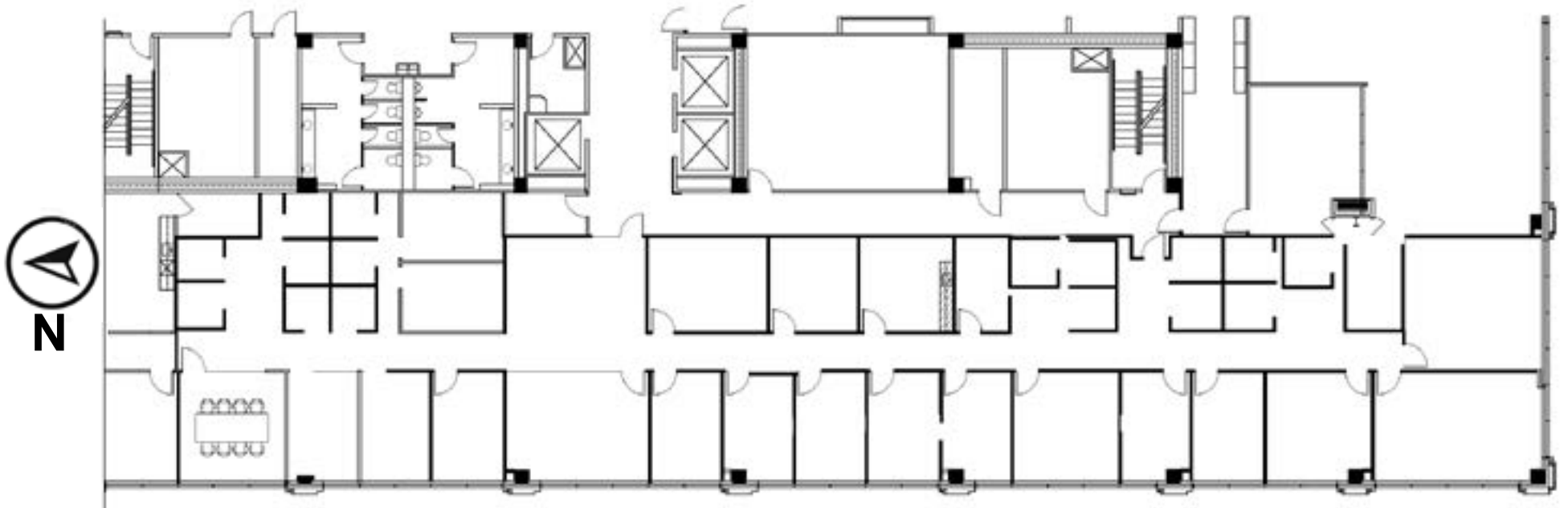
PROPERTY

Space:	Suite 450 (7,964 RSF)
Sublease Term:	March 31, 2027
Rate:	Negotiable
OPEX:	\$11.51/RSF (2025 estimate by Landlord)
Parking:	3.5/1,000
Furniture:	Negotiable
Availability:	Immediate
Amenities:	<ul style="list-style-type: none">• Close proximity to Vintage Park• Ample dining options nearby



Property Photos





■
Floor
Plan

HOUSTON, TX 77070





19450

Texas Highway 249

HOUSTON, TX 77070

7,964 RSF

Cooper Bagheri

Director

cooper.bagheri@cushwake.com

+1 713-331-1805

Tim D. Relyea

Executive Vice Chairman

tim.relyea@cushwake.com

+1 713 877 8752

1330 Post Oak Blvd #2700,
Houston, TX 77056

cushmanwakefield.com



©2025 Cushman & Wakefield. All rights reserved. The information contained in this communication is strictly confidential. This information has been obtained from sources believed to be reliable but has not been verified. NO WARRANTY OR REPRESENTATION, EXPRESS OR IMPLIED, IS MADE AS TO THE CONDITION OF THE PROPERTY (OR PROPERTIES) REFERENCED HEREIN OR AS TO THE ACCURACY OR COMPLETENESS OF THE INFORMATION CONTAINED HEREIN, AND SAME IS SUBMITTED SUBJECT TO ERRORS, OMISSIONS, CHANGE OF PRICE, RENTAL OR OTHER CONDITIONS, WITHDRAWAL WITHOUT NOTICE, AND TO ANY SPECIAL LISTING CONDITIONS IMPOSED BY THE PROPERTY OWNER(S). ANY PROJECTIONS, OPINIONS OR ESTIMATES ARE SUBJECT TO UNCERTAINTY AND DO NOT SIGNIFY CURRENT OR FUTURE PROPERTY PERFORMANCE.