

FOR LEASE

2121 NEWCASTLE AVE

CARDIFF BY THE SEA, CA 92007

*Office building located in
the heart of Cardiff, CA*

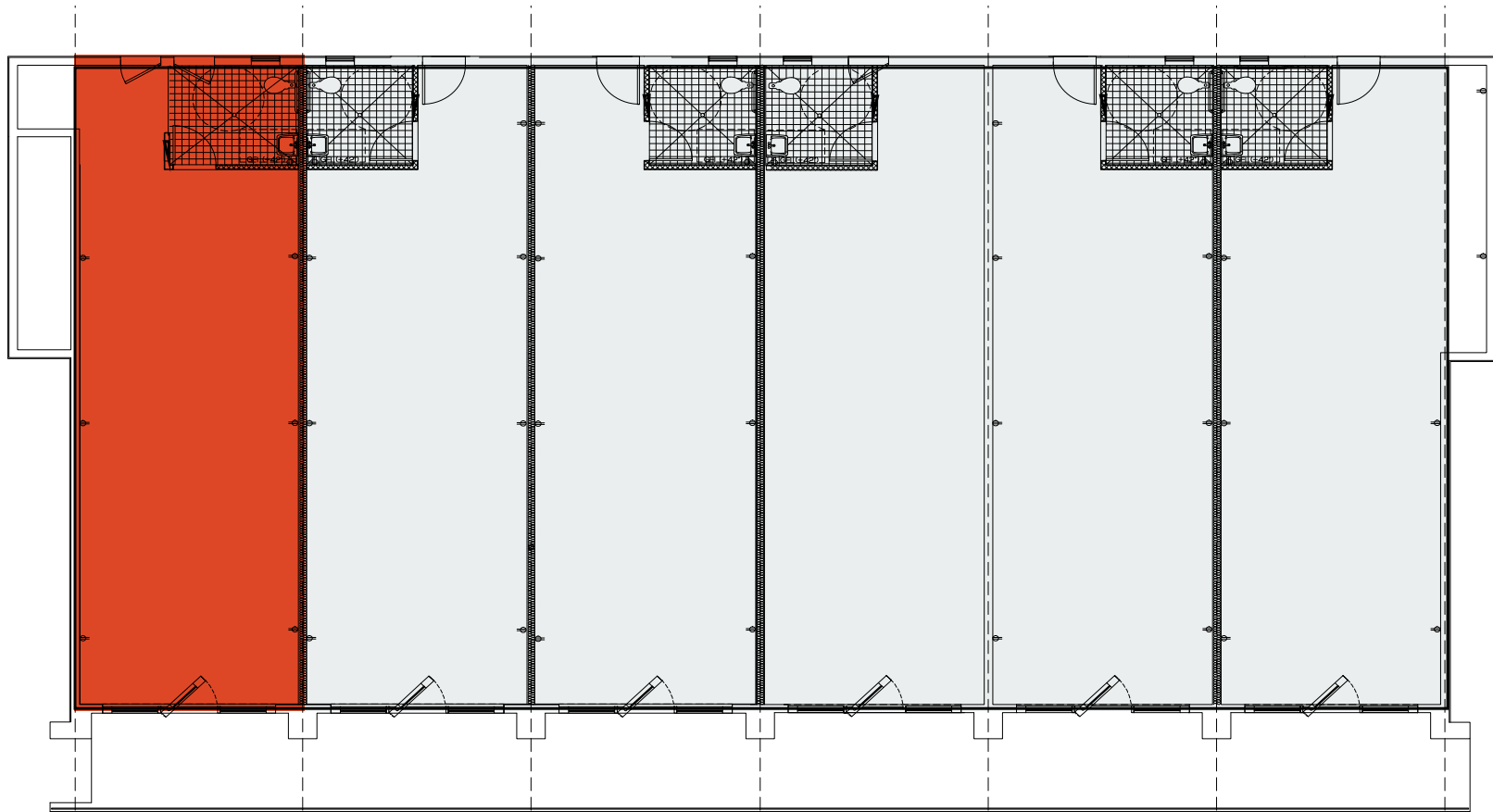


*For more
information
contact*

MARY KAY BIER
First Vice President
858.232.0293
marykay.bier@kidder.com
LIC N° 01406206

KIDDER.COM

km Kidder
Mathews



AVAILABILITIES

Suite	Lease Rate	Size	Availability	Notes
Suite A	\$4.75 NNN	850 SF	Now	Surrounded by retail and restaurants, spectacular ocean views, minutes walk to the beach

KIDDER.COM

This information supplied herein is from sources we deem reliable. It is provided without any representation, warranty, or guarantee, expressed or implied as to its accuracy. Prospective Buyer or Tenant should conduct an independent investigation and verification of all matters deemed to be material, including, but not limited to, statements of income and expenses. Consult your attorney, accountant, or other professional advisor. All Kidder Mathews designs are the sole property of Kidder Mathews. Branded materials and layouts are not authorized for use by any other firm or person.

FOR LEASE | 2121 NEWCASTLE AVE, CARDIFF

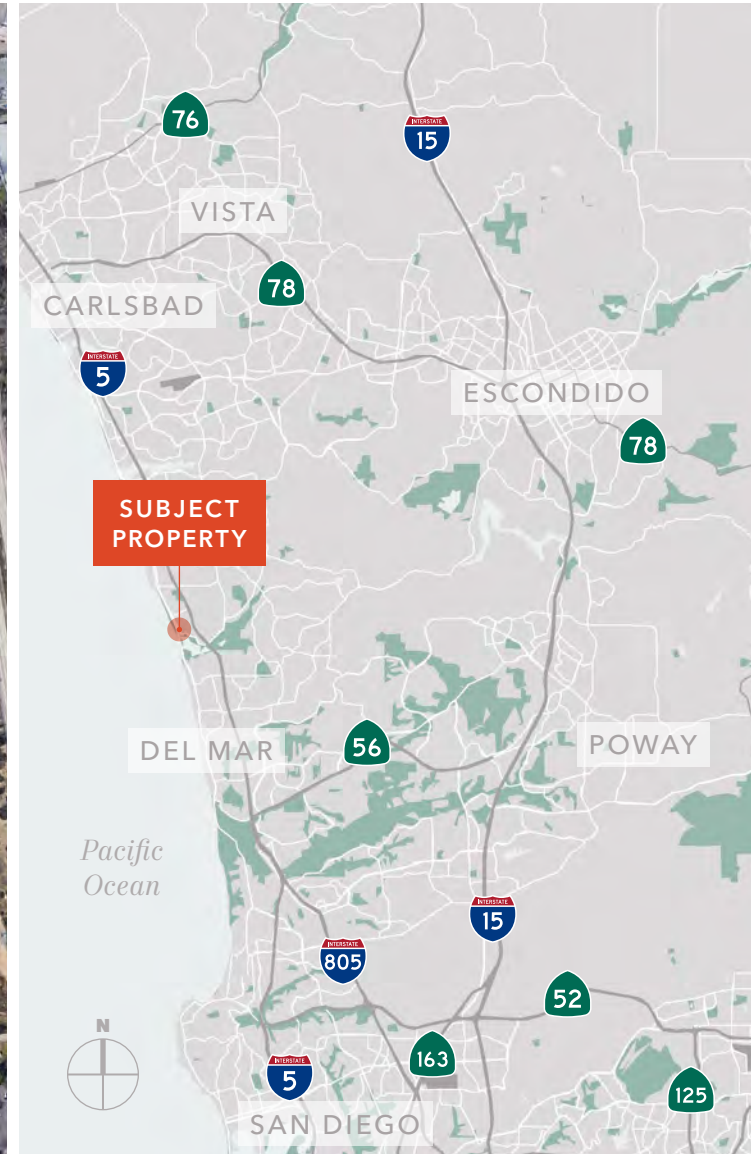


KIDDER.COM

This information supplied herein is from sources we deem reliable. It is provided without any representation, warranty, or guarantee, expressed or implied as to its accuracy. Prospective Buyer or Tenant should conduct an independent investigation and verification of all matters deemed to be material, including, but not limited to, statements of income and expenses. Consult your attorney, accountant, or other professional advisor. All Kidder Mathews designs are the sole property of Kidder Mathews. Branded materials and layouts are not authorized for use by any other firm or person.



FOR LEASE | 2121 NEWCASTLE AVE, CARDIFF



KIDDER.COM

This information supplied herein is from sources we deem reliable. It is provided without any representation, warranty, or guarantee, expressed or implied as to its accuracy. Prospective Buyer or Tenant should conduct an independent investigation and verification of all matters deemed to be material, including, but not limited to, statements of income and expenses. Consult your attorney, accountant, or other professional advisor. All Kidder Mathews designs are the sole property of Kidder Mathews. Branded materials and layouts are not authorized for use by any other firm or person.

