

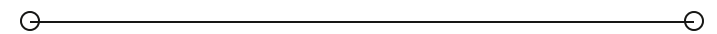


LEASE

**Prime Commercial Spaces
Near Carmel City Center**

99 EAST CARMEL DRIVE, SUITES 130 & 160

Carmel, IN 46032



PRESENTED BY:

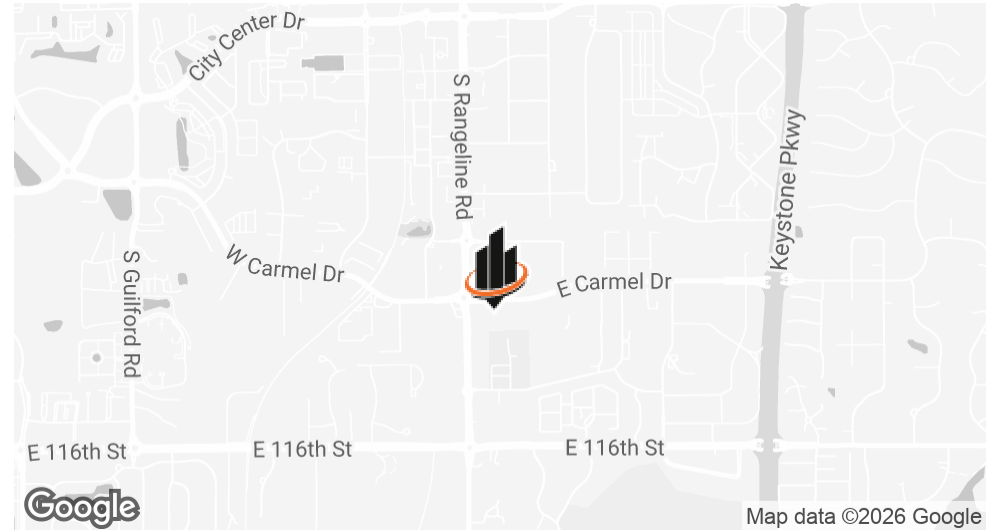
**JESS LAWHEAD, SIOR, CCIM,
CBI**

Phone: 317.447.4403

jess.lawhead@svn.com

IN #RB14047741

PROPERTY SUMMARY



OFFERING SUMMARY

LEASE RATE:	\$28 SF/yr (NNN)
AVAILABLE SF:	1,135 - 1,310 SF
ZONING:	B8
LOT SIZE:	1.463 Acres

PROPERTY HIGHLIGHTS

- Located just east of Rangeline Road in downtown Carmel with convenient access to US 31 and Keystone Parkway
- Surrounded by a strong mix of office, retail, restaurant, and service users within an established downtown Carmel setting
- Minutes from the Carmel Arts & Design District, Carmel City Center, and the Monon Trail
- Suite 130 offers approximately 1135 SF and Suite 160 offers approximately 1310 SF of modern commercial space
- Both suites feature flexible layouts with updated finishes suitable for office, retail, or service-oriented users in a highly accessible and well-established location

JESS LAWHEAD, SIOR, CCIM, CBI

O: 317.447.4403

jess.lawhead@svn.com

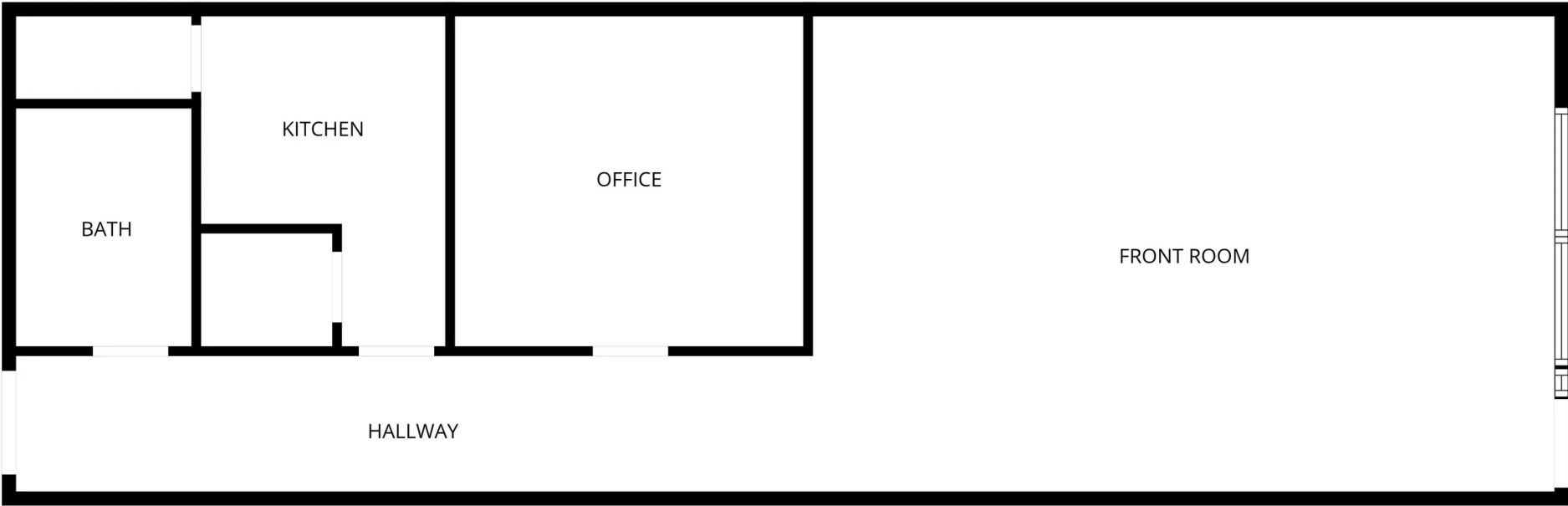
IN #RB14047741

ADDITIONAL PHOTOS



JESS LAWHEAD, SIOR, CCIM, CBI
O: 317.447.4403
jess.lawhead@svn.com
IN #RB14047741

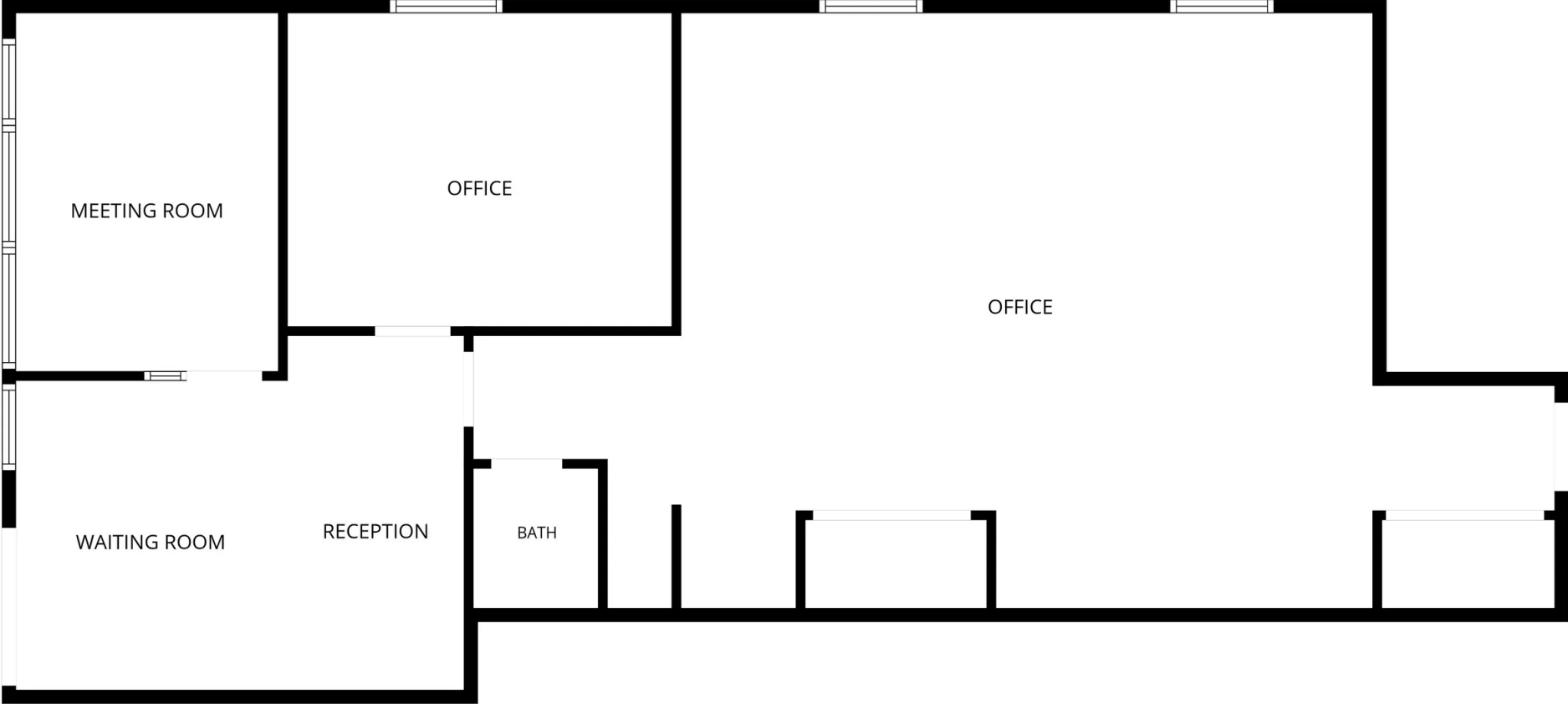
SUITE 130



JESS LAWHEAD, SIOR, CCIM, CBI

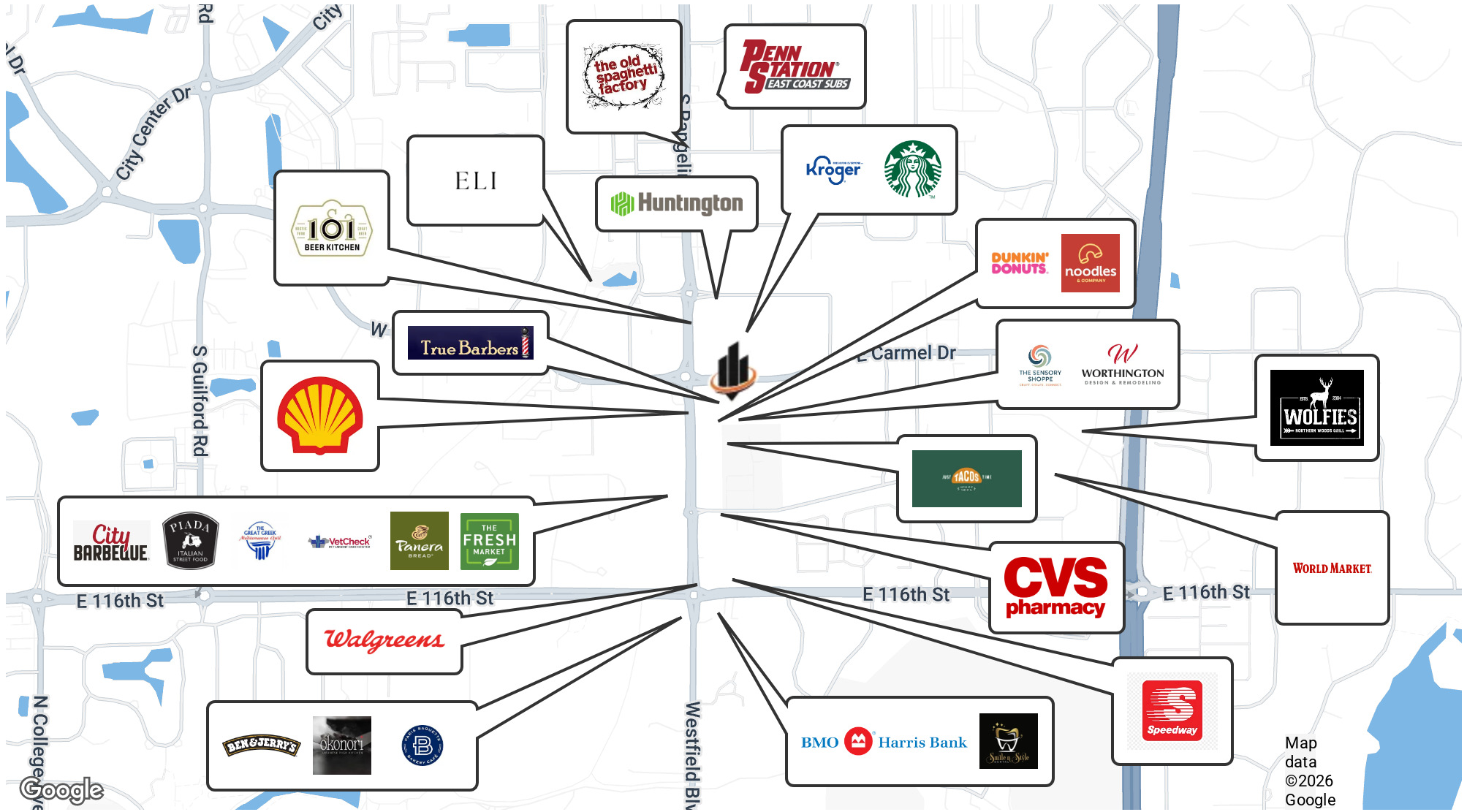
O: 317.447.4403
jess.lawhead@svn.com
IN #RB14047741

SUITE 160



JESS LAWHEAD, SIOR, CCIM, CBI
O: 317.447.4403
jess.lawhead@svn.com
IN #RB14047741

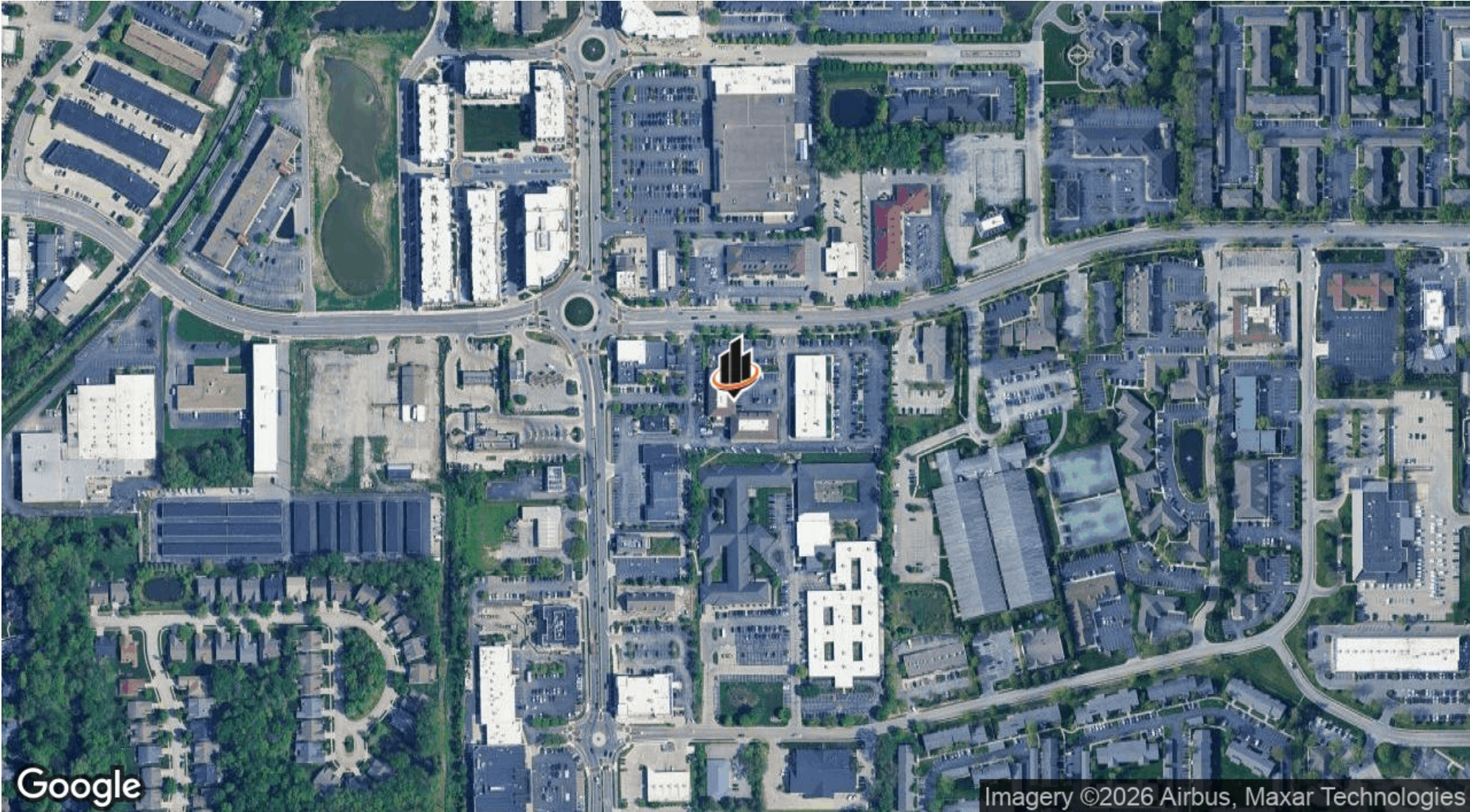
RETAILER MAP



Map data ©2026 Google

JESS LAWHEAD, SIOR, CCIM, CBI
 O: 317.447.4403
 jess.lawhead@svn.com
 IN #RB14047741

LOCATION MAP



JESS LAWHEAD, SIOR, CCIM, CBI
O: 317.447.4403
jess.lawhead@svn.com
IN #RB14047741