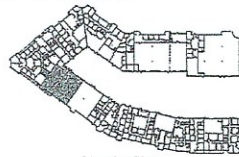


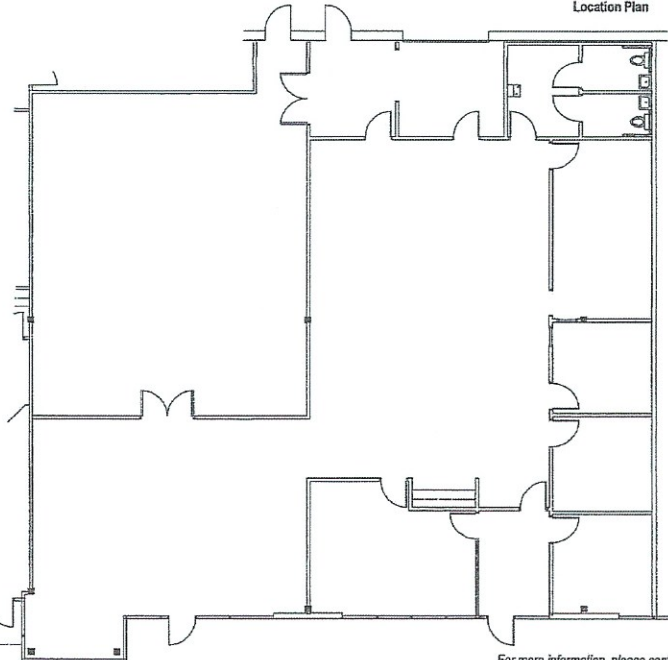
EXHIBIT "A"
Floor Plan of Expansion Space

Park Place Business Center

2300 West Park Place Boulevard
Suite 128 • 5,219 SF 59% Office



Location Plan



For more information, please contact:
Bob Francisco
Francisco&Associates
770.552.1216
bobfrancisco@comcast.net

 **GODDARD**
INVESTMENT **GROUP**

Information contained herein has been provided to broker by owner or from other sources. We have no reason to doubt its accuracy, but we do not guarantee it. Broker disclaims all expressed or implied responsibilities for emissions, errors, environmental conditions of soil / structure, operating systems, the roof, price and compliances with applicable laws. Suitability for intended use or any other matter is the responsibility of the purchaser or tenant. Prospective purchasers or tenants agree to independently obtain and analyze all material information.