



YOUR SIGN HERE

ALTRA COLLISION

**FOR LEASE:**

*East Phoenix Retail/Office Space*

16624 N 32nd St | PHOENIX, AZ 85032

**LEVROSE**  
COMMERCIAL REAL ESTATE

TCN  
MEMBERSHIP SERVICE

# OFFERING SUMMARY

**Address:** 16624 N 32nd St  
Scottsdale, AZ 85254

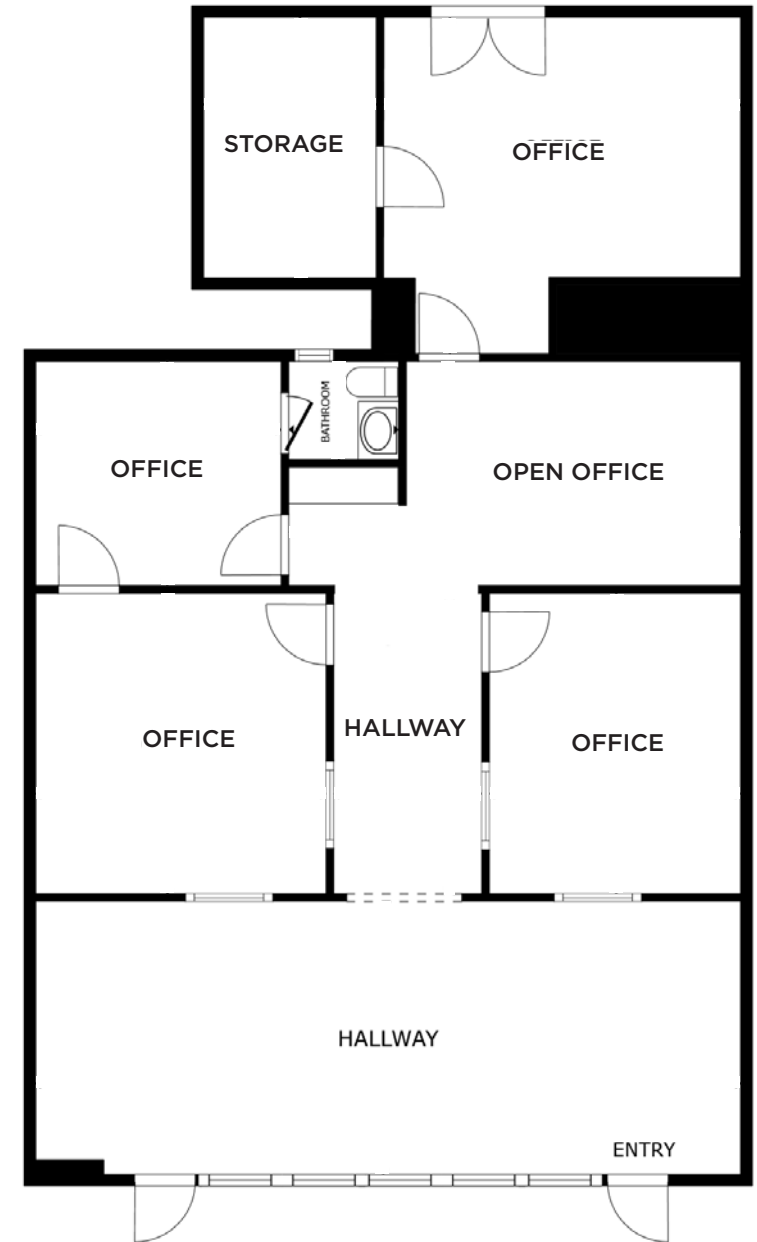
**Availability:** ±1,800 SF

**Asking Rate:** \$17.00/SF (FS)

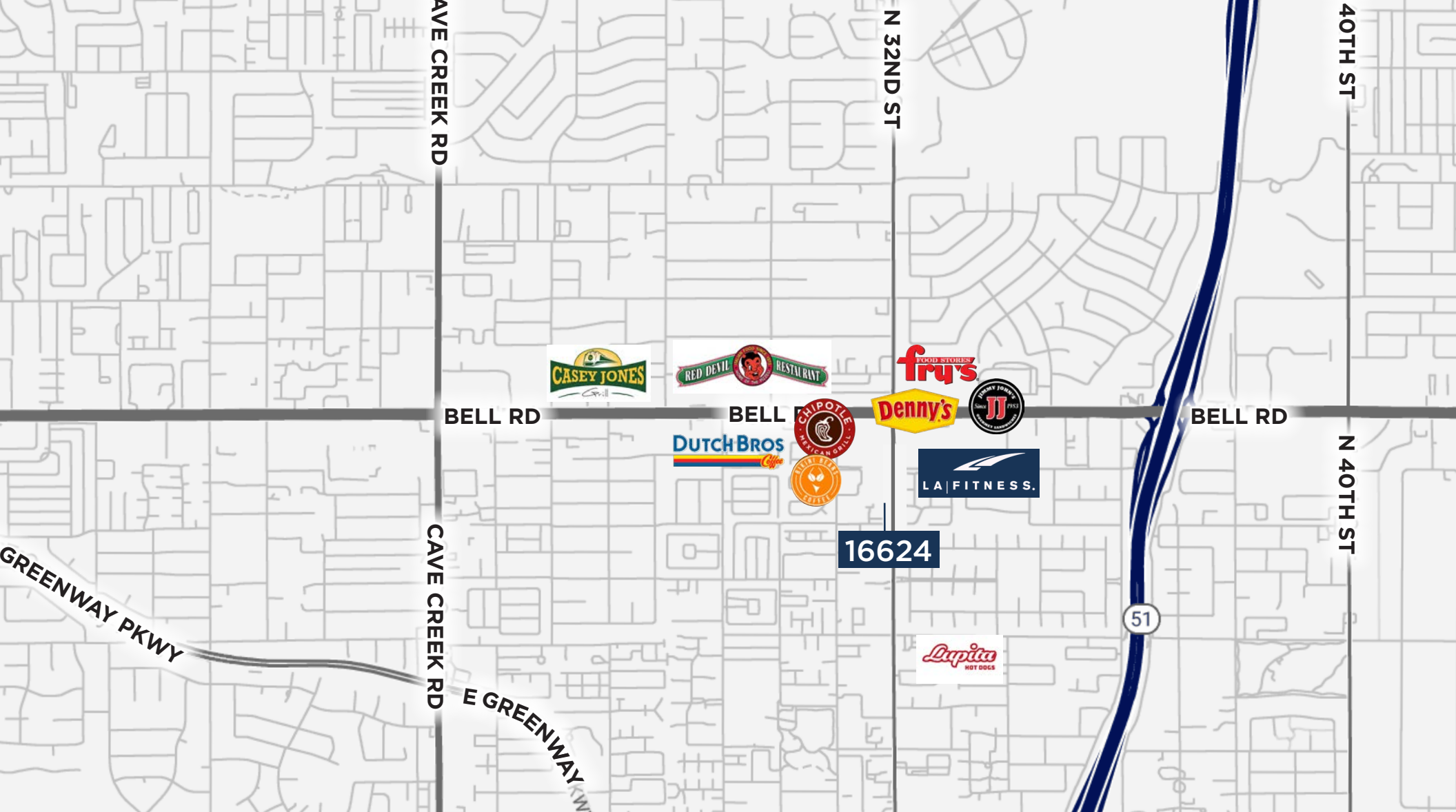
**Zoning:** C-3, City of Phoenix

## PROPERTY HIGHLIGHTS

- Large store front windows with automatic security roll up
- Highly Visible Building Signage Fronting 32nd Street
- Close Proximity to Numerous Retail and Restaurant Establishments
- Easy Freeway Access to the Hwy 51
- Effortless Pull Up Parking Directly Out Front of the Suite



**VIEW VIRTUAL TOUR**



## LOCATION HIGHLIGHTS



SITUATED DIRECTLY OFF  
OF 32ND STREET



100+ RESTAURANTS  
WITHIN 3 MILES



± 10 MINUTES FROM  
PARADISE VALLEY MALL



±20 MINUTES FROM  
SCOTTSDALE AIRPARK



**HUNTER CHASSE**  
Vice President  
480.289.4225  
hchasse@levrose.com

**BILLY COWAN**  
Advisor  
480.294.6001  
bcowan@levrose.com

**LEVROSE**  
COMMERCIAL REAL ESTATE



This information has been secured from sources believed to be reliable, but no representations or warranties are made, expressed or implied, as to the accuracy of the information. References to square footage are approximate. Buyer and tenant must verify the information and bears all risk for any inaccuracies. All quoted prices are subject to change without notice.