



COMMERCIAL

OFFICE SPACE FOR LEASE

MULTIPLE - 164 INNISFIL ST., BARRIE, ON

RATE:

\$500.00 - \$1,800.00 /MONTH GROSS

Ron Hoggarth

Sales Representative
(705) 238-6055
ron@edlowerealestate.com

Danielle Ferguson

Sales Representative
(705) 730-3389
danielle@edlowerealestate.com

info@edlowerealestate.com
O: (705) 726 3871
F: (705) 726 8260
www.edlowerealestate.com

**ED
LOWE**
LIMITED BROKERAGE

PROPERTY OVERVIEW

ADDRESS	164 INNISFIL ST., BARRIE
LOCATION	INNISFIL ST NORTH OF BROCK ST.
UNIT SPACES	VARIOUS SIZES FROM 97 S.F. UP TO 129 S.F.
ZONING	GI
HEATING	CENTRAL HEATING/COOLING
UTILITIES	INCLUDE
AVAILABILITY	IMMEDIATE

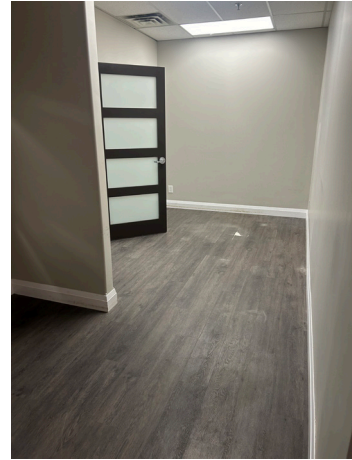
- COMMENTS**
- . VARIOUS SIZED OFFICE SPACE AVAILABLE IN BUSY BUILDING WITH A TEAM WORK TYPE SETTING.
 - . INTERNET AVAILABLE
 - . UNIT 129 HAS EXTERIOR DOOR
 - . COMMON AREA WASHROOMS
 - . CLOSE TO SHOPPING, RESTAURANTS, ACCESS TO HWY 400.
-



Office Units Available

UNITS	UNIT S.F.	GROSS MONTHLY RENT + HST	
100	97 s.f.	\$500.00/mo	includes utilities
105	710 s.f.	\$1,600.00/mo	includes utilities
115	187 s.f.	\$650.00/mo	includes utilities
129	783 s.f.	\$1,800.00/mo	includes utilities





Zoning

GI - GENERAL INDUSTRIAL

7.0 INDUSTRIAL

7.1 GENERAL

7.1.1 No person shall hereafter use any lands, nor erect, *alter*, enlarge or use any *buildings or structures* in any Industrial Zone except in accordance with the provisions of this section and Section 4.0 of this By-law.

7.2 PERMITTED USES

7.2.1 The permitted *uses* in the Industrial Zone are listed in Table 7.2. (By-law 2015-068)

Uses	Zones				
	Business Park (BP) (Formerly EM1-Business Park)	Light Industrial (LI) (Formerly EM1-Business Park and EM3-Service Industrial Zones)	Highway Industrial (HI) (Formerly EM2-Highway 400 Industrial)	General Industrial (GI) (Formerly EM4-General Industrial)	Restricted Industrial (RI) (Formerly EM5-Restricted Industrial)
Industrial Uses					
<i>Abattoir</i>					X
<i>Animal Shelter</i>		X		X	
<i>Bakery</i>		X	X	X	
<i>Concrete Product Manufacturing</i>				X	
<i>Concrete Ready Mix Plant</i>					X
<i>Excavation and Processing of Mineral Aggregate Resources</i>					X
<i>Foundry</i>				X	X
<i>Manufacturing and Processing in Wholly Enclosed Buildings</i>	X	X	X	X	X
<i>Manufacturing, Refining, or Rendering of Noxious Products</i>					X
<i>Material Recovery Facility</i>				X ⁽¹⁾	X ⁽¹⁾
<i>Medical Marihuana Production Facility</i>				X	
<i>Outdoor Storage</i>		X	X	X	X
<i>Outdoor Storage of Sand, Gravel, Stone, Soil or Salt</i>					X
<i>Printing and Publishing</i>	X	X	X	X	
<i>Rail Transfer Facility</i>		X	X	X	
<i>Recyclable Materials Transfer Station</i>				X ⁽¹⁾	X ⁽¹⁾

Zoning

GI - GENERAL INDUSTRIAL

Uses	Zones				
	Business Park (BP) (Formerly EM1-Business Park)	Light Industrial (LI) (Formerly EM1-Business Park and EM3-Service Industrial Zones)	Highway Industrial (HI) (Formerly EM2-Highway 400 Industrial)	General Industrial (GI) (Formerly EM4-General Industrial)	Restricted Industrial (RI) (Formerly EM5-Restricted Industrial)
Recycling Facility Concrete And/Or Asphalt					X
Rental Store Excluding Video and Electronic Rentals		X		X	
Research/Development Facility	X	X	X	X	
Self Storage		X		X	
Truck Terminal				X	
Warehousing in wholly enclosed buildings excluding self storage	X	X	X	X	
Wholesale Establishment		X	X	X	
Commercial Uses					
Accessory Employee Use	X	X	X	X	X
Accessory Retail	X	X	X	X	
Adult Entertainment Parlour				X	
Assembly Hall	X	X	X		
Automotive Repair Establishment		X		X	
Bank	X	X	X (As part of a multi-tenant building)		
Building Supply Centre ⁽²⁾		X	X ⁽²⁾ (As part of a multi-tenant building)	X	
Car Wash		X		X	
Conference Centre	X	X	X		
Custom Workshop		X		X	
Data Processing Centre	X	X	X	X	
Drive Through Facility	X	X	X	X	
Dry Cleaning Establishment		X		X	
Fitness or Health Club	X	X			
Golf Driving Range _(outdoor)				X	
Hotel, Motel	X	X	X		
Miniature Golf _(outdoor)		X			

Zoning

GI - GENERAL INDUSTRIAL

Uses	Zones				
	Business Park (BP) (Formerly EM1-Business Park)	Light Industrial (LI) (Formerly EM1-Business Park and EM3-Service Industrial Zones)	Highway Industrial (HI) (Formerly EM2-Highway 400 Industrial)	General Industrial (GI) (Formerly EM4-General Industrial)	Restricted Industrial (RI) (Formerly EM5-Restricted Industrial)
Nursery or Garden Supply Centre		X		X	
Office	X	X	X	X	
Office, Medical	X	X	X		
Outdoor Display and Sales Area		X		X	
Photography Studio	X	X			
Private Club		X			
Recreational Establishment		X			
Restaurant as part of multi-tenant building	X	X	X	X	
Service Store	X	X		X	
Trade Centre		X	X		
Transmission Establishment, Cellular and Electronic				X	X
Veterinary Clinic	X	X	X	X	
Agricultural Uses					
Heavy Equipment Dealer				X	
Kennel				X	
Kennel in wholly enclosed buildings		X			
Institutional Uses					
Child Care	X	X			
Commercial School	X	X	X		
Industrial School		X	X	X	
Place of Worship		X			
Funeral Service Provider		X			

- (1) Shall be conducted only within a fully enclosed building. No *outdoor storage* or accessory *outdoor storage* will be permitted in association with these uses.
- (2) Shall be restricted to a multi-tenanted building, to a maximum of 25% of the gross floor area of the total gross floor area of the building, to a maximum of 1000m², and that the provisions of Section 7.2.2 "Accessory Retail Uses" shall not apply. (By-law 2015-068)

Check us out online



Ron Hoggarth

Sales Representative
(705) 238-6055
ron@edlowerealestate.com



Danielle Ferguson

Sales Representative
(705) 730-3389
danielle@edlowerealestate.com

info@edlowerealestate.com
O: (705) 726 3871
F: (705) 726 8260
www.edlowerealestate.com

