

WAREHOUSE SUBLEASE 19,555 SF AVAILABLE

PARKWAY COMMERCE CENTER

1919 NW 19TH STREET, SUITE 301-302, FT. LAUDERDALE, FL

HIGHLY MOTIVATED SUBLESSOR!



SUBLEASE INFORMATION

- 19,555 SF
 - A/C Warehouse area - 3,000 SF
 - Office area - 1,500 SF
 - 3 executive offices
 - 12' X 25' Breakroom
 - Handicapped office bathroom
- 24' clear height
- 40' X 47' Columns
- Fire Sprinklered
- LED Lighting
- 7 air compressor lines
- 480 Volt 3-phase power
- 4 - 12' X 14' Drive-in Loading doors
- 2 - Dock high doors with pit levelers
- Lease Expires: July 31, 2030
- Lease Rate: \$15.00 PSF NNN
- Occupancy: Immediate

For more information contact:

Brian T. Ahearn, CCIM
Senior Vice President
M: 954.937.4540
BAhearn@butters.com

Virginia Calcaño
Senior Associate
M: 954.588.9033
VCalcano@butters.com

JC Conte - SIOR
Executive Vice President
M: 305.901.6033
JCConte@butters.com



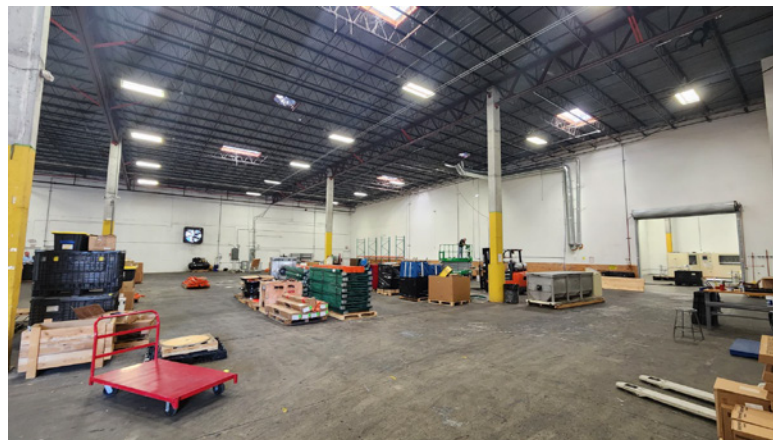
Butters Realty & Management
6820 Lyons Technology Circle #100
Coconut Creek | FL. 33073 | www.Butters.com

No warranty or representation is made to the accuracy of the foregoing information. Terms or sale or lease or availability are subject to change or withdrawal without notice.

WAREHOUSE SUBLEASE 19,555 SF AVAILABLE

PARKWAY COMMERCE CENTER

1919 NW 19TH STREET, SUITE 301-302, FT. LAUDERDALE, FL

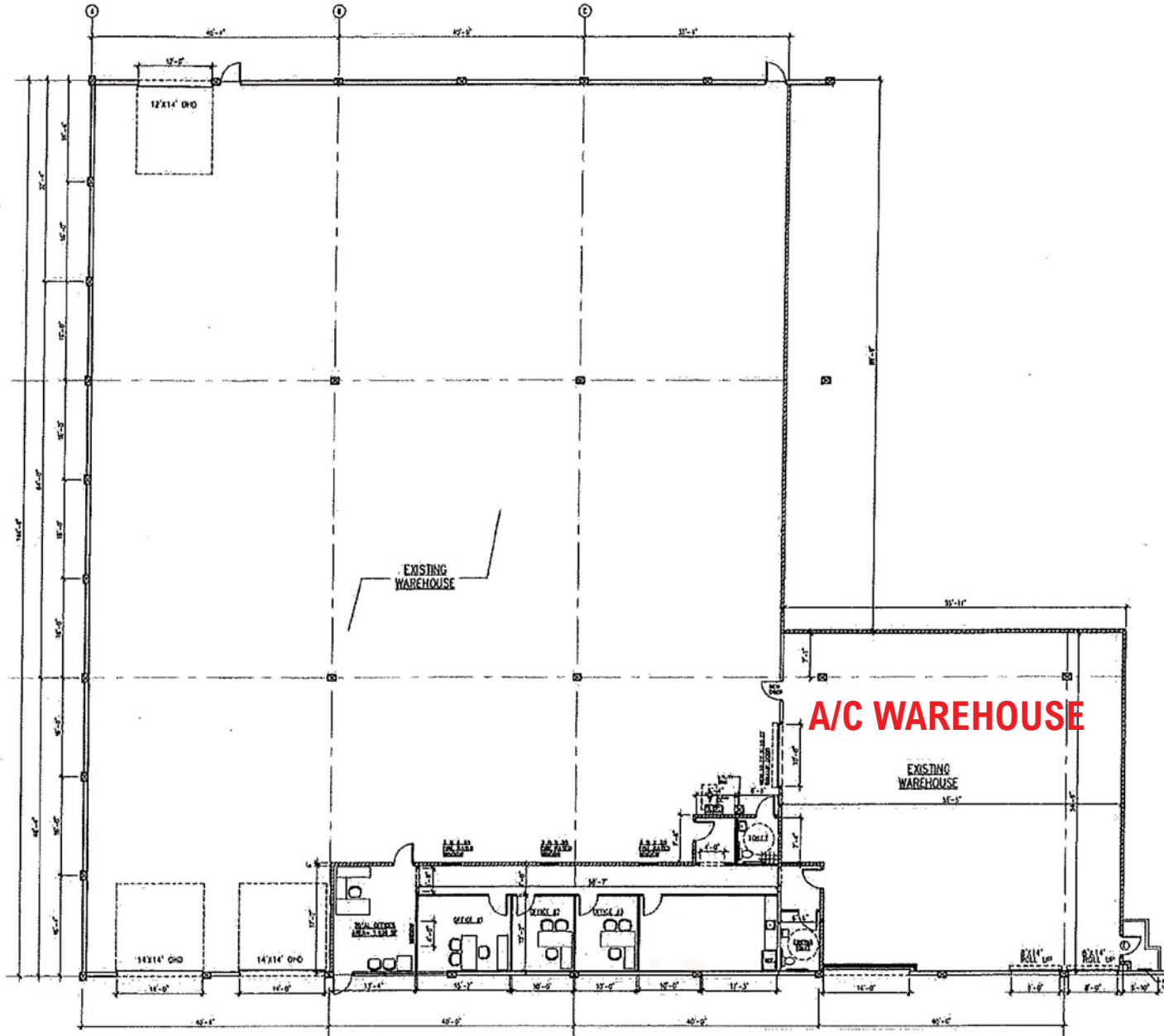


WAREHOUSE SUBLEASE 19,555 SF AVAILABLE

PARKWAY COMMERCE CENTER

1919 NW 19TH STREET, SUITE 301-302, FT. LAUDERDALE, FL

FLOORPLAN



WAREHOUSE SUBLEASE 19,555 SF AVAILABLE

PARKWAY COMMERCE CENTER

1919 NW 19TH STREET, SUITE 301-302, FT. LAUDERDALE, FL

LOCATION MAP

