

# FOR LEASE



## MIDWAY PARK NORTH

15900-15960 MIDWAY RD | ADDISON, TX 75001



### LISTING HIGHLIGHTS

- ADDRESS:** 15900 - 15960 Midway Rd
- AVAILABLE SF:** +/- 66,634 SF
- YEAR BUILT:** 1983
- CLEAR HEIGHT:** 14'
- PARKING:** 206 Concrete parking spaces
- NOTES:**
  - Rear loading with grade level, dock high or roll up doors

#### FOR LEASING INFORMATION:

**Jessica Reinhardt**  
jreinhardt@lee-associates.com  
972.934.4005  
972.891.5236

**Susan Cancemi**  
scancemi@lee-associates.com  
972.934.4005  
469.236.3386

#### OWNED BY:



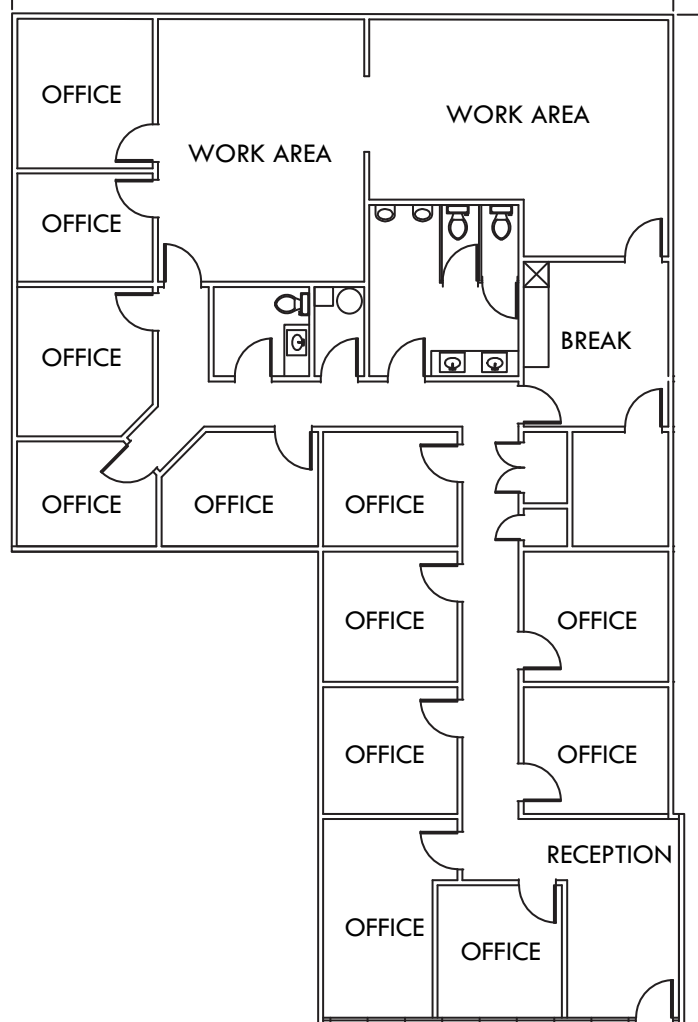
#### LEASED BY:



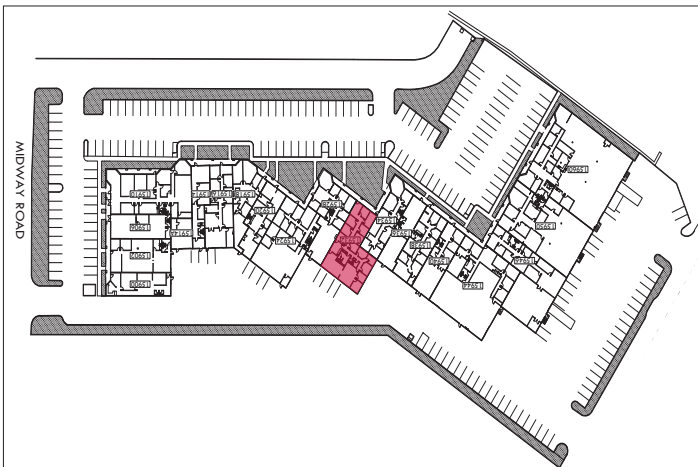
# 15932 MIDWAY RD

# FOR LEASE

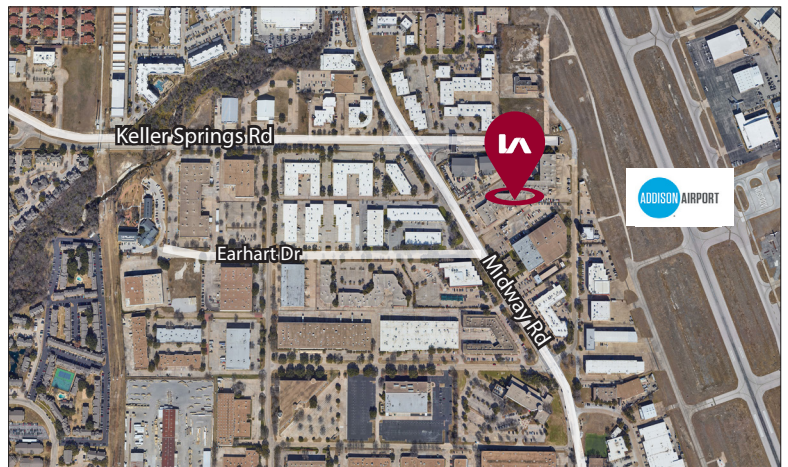
**STE 15932**  
3,500 SF



**SITE PLAN**



**AERIAL**



All information furnished regarding property for sale, rental or financing is from sources deemed reliable, but no warranty or representation is made to the accuracy thereof and same is submitted to errors, omissions, change of price, rental or other conditions prior to sale, lease or financing or withdrawal without notice. No liability of any kind is to be

**Jessica Reinhardt**

jreinhardt@lee-associates.com

972.934.4005

972.891.5236

**Susan Cancemi**

scancemi@lee-associates.com

972.934.4005

469.236.3386

OWNED BY:

**CIP REAL ESTATE**

LEASED BY:

**LEE & ASSOCIATES**  
COMMERCIAL REAL ESTATE SERVICES