



# NEXUS

AT GREEN VALLEY CORPORATE CENTER



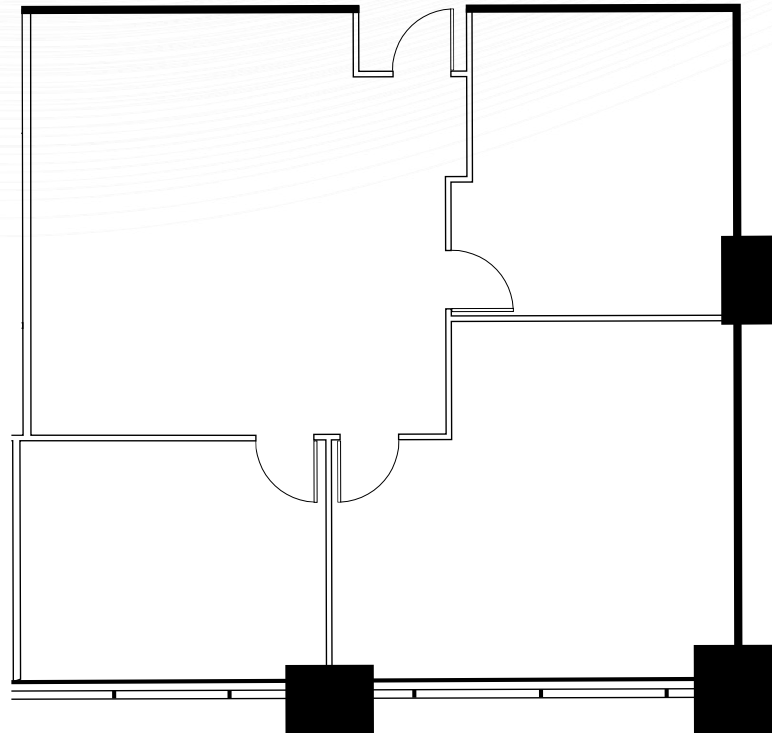


# NEXUS

AT GREEN VALLEY CORPORATE CENTER

**901** N. GREEN VALLEY  
PARKWAY

**SUITE 140** | ±1,308 RSF



FOR MORE INFORMATION,  
PLEASE CONTACT:

**CHARLES VAN GEEL**

Senior Director  
+1 702 688 6966  
charles.vangeel@cushwake.com  
LIC #BS.044616 / PM.162448

**MATTHEW BEBAN**

Associate  
+1 702 364 5353  
matthew.beban@cushwake.com  
LIC #S.0202638

Brentwood EST. 1984





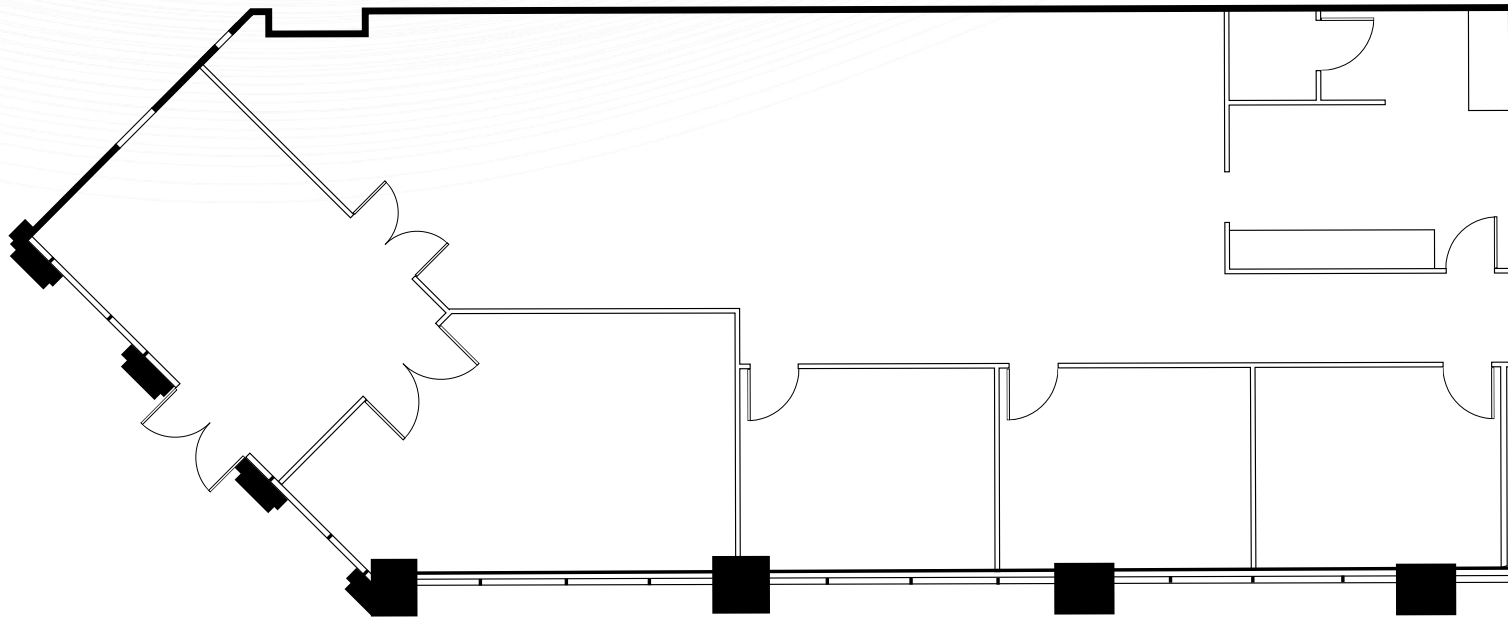
# NEXUS

AT GREEN VALLEY CORPORATE CENTER

# 901

N. GREEN VALLEY  
PARKWAY

SUITE 150 | ±2,895 RSF



FOR MORE INFORMATION,  
PLEASE CONTACT:

## CHARLES VAN GEEL

Senior Director  
+1 702 688 6966  
charles.vangeel@cushwake.com  
LIC #BS.044616 / PM.162448

## MATTHEW BEBAN

Associate  
+1 702 364 5353  
matthew.beban@cushwake.com  
LIC #S.0202638

EST. 1984  
Brentwood





# NEXUS

AT GREEN VALLEY CORPORATE CENTER

# 901 N. GREEN VALLEY PARKWAY

SUITE 260 | ±6,522 RSF



FOR MORE INFORMATION,  
PLEASE CONTACT:

## CHARLES VAN GEEL

Senior Director  
+1 702 688 6966  
charles.vangeel@cushwake.com  
LIC #BS.044616 / PM.162448

## MATTHEW BEBAN

Associate  
+1 702 364 5353  
matthew.beban@cushwake.com  
LIC #S.0202638

EST. 1984  
Brentwood





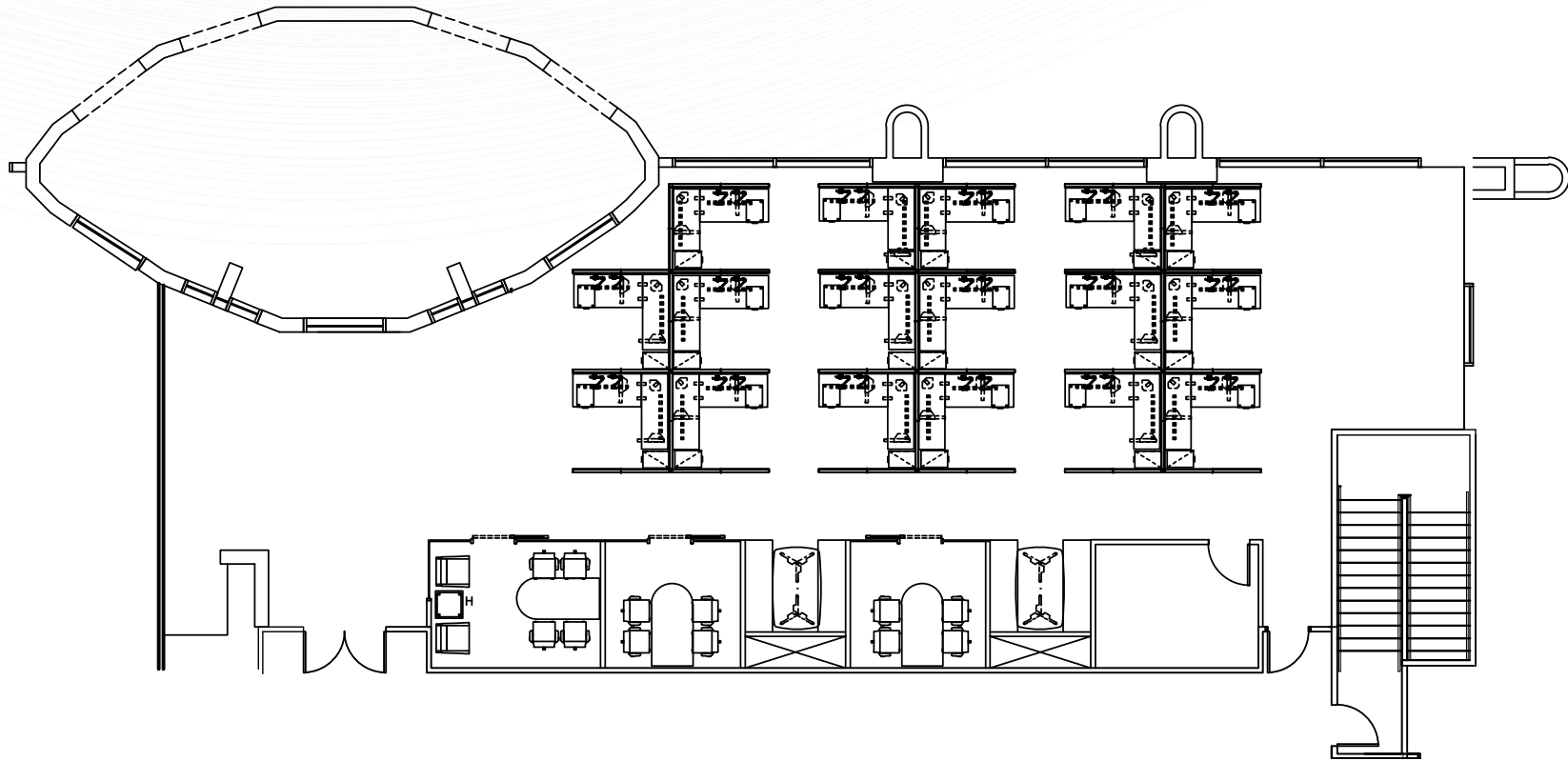
# NEXUS

AT GREEN VALLEY CORPORATE CENTER

# 1301

N. GREEN VALLEY  
PARKWAY

SUITE 225 | ±3,617 RSF



FOR MORE INFORMATION,  
PLEASE CONTACT:

## CHARLES VAN GEEL

Senior Director  
+1 702 688 6966  
charles.vangeel@cushwake.com  
LIC #BS.044616 / PM.162448

## MATTHEW BEBAN

Associate  
+1 702 364 5353  
matthew.beban@cushwake.com  
LIC #S.0202638

EST. 1984  
Brentwood





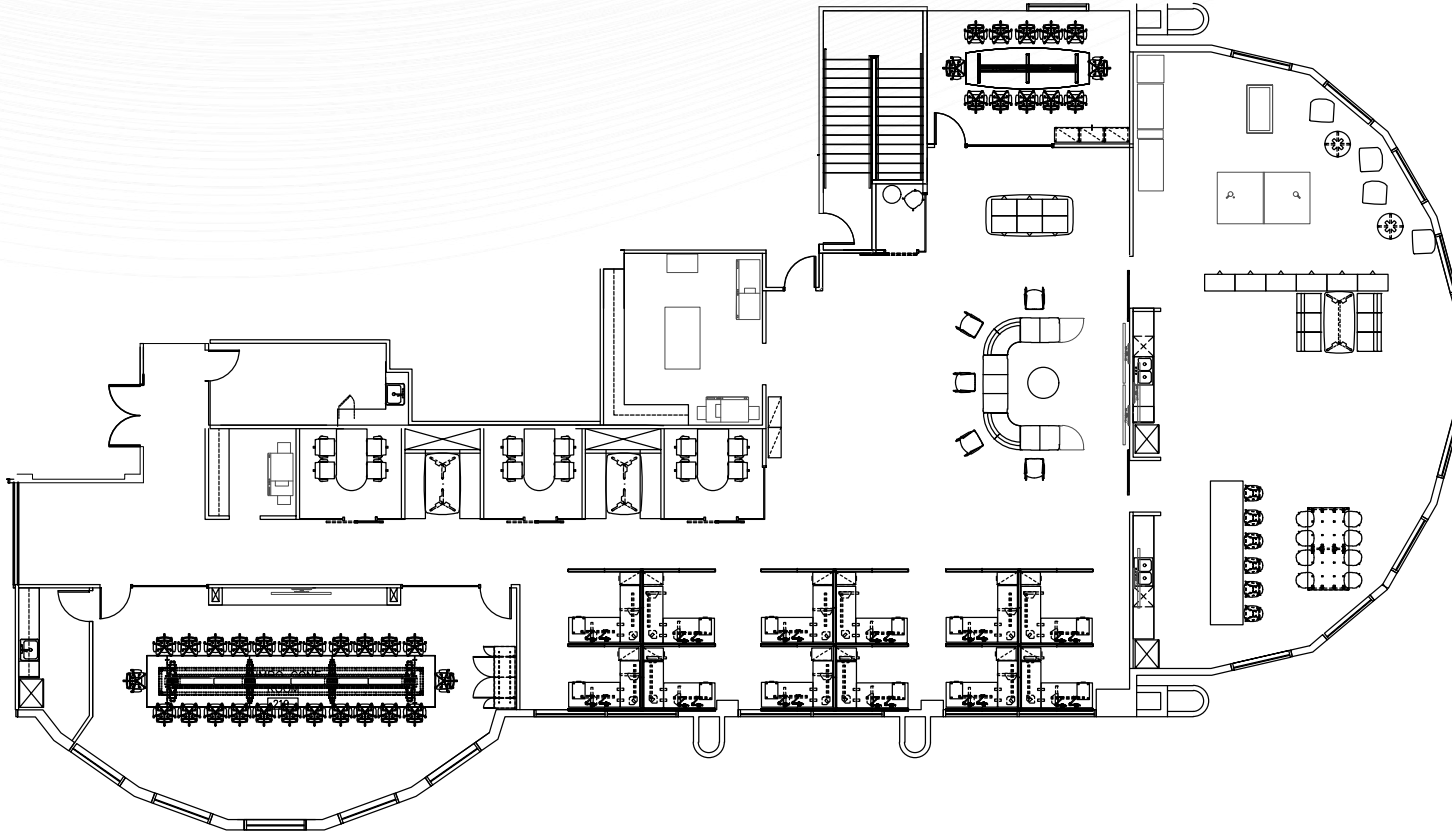
# NEXUS

AT GREEN VALLEY CORPORATE CENTER

# 1301

N. GREEN VALLEY  
PARKWAY

SUITE 275 | ±7,868 RSF



FOR MORE INFORMATION,  
PLEASE CONTACT:

## CHARLES VAN GEEL

Senior Director  
+1 702 688 6966  
charles.vangeel@cushwake.com  
LIC #BS.044616 / PM.162448

## MATTHEW BEBAN

Associate  
+1 702 364 5353  
matthew.beban@cushwake.com  
LIC #S.0202638

EST. 1984  
Brentwood





# NEXUS

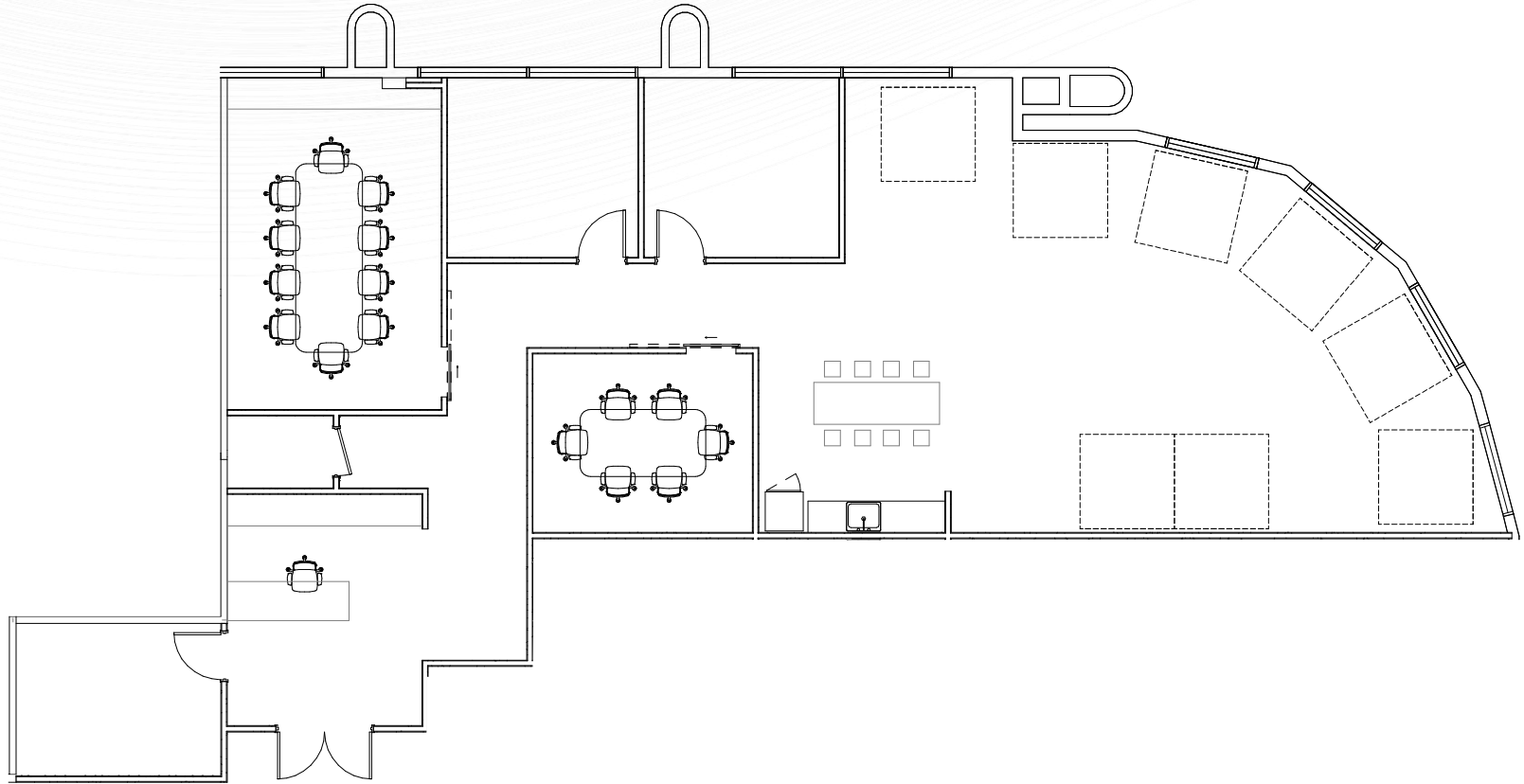
AT GREEN VALLEY CORPORATE CENTER

# 1401

N. GREEN VALLEY  
PARKWAY

**SUITE 240** | ±2,886 RSF

AVAILABLE 120 DAYS POST LEASE EXECUTION



AVAILABLE 5/1/26

FOR MORE INFORMATION,  
PLEASE CONTACT:

## CHARLES VAN GEEL

Senior Director  
+1 702 688 6966  
charles.vangeel@cushwake.com  
LIC #BS.044616 / PM.162448

## MATTHEW BEBAN

Associate  
+1 702 364 5353  
matthew.beban@cushwake.com  
LIC #S.0202638

EST. 1984  
**Brentwood**



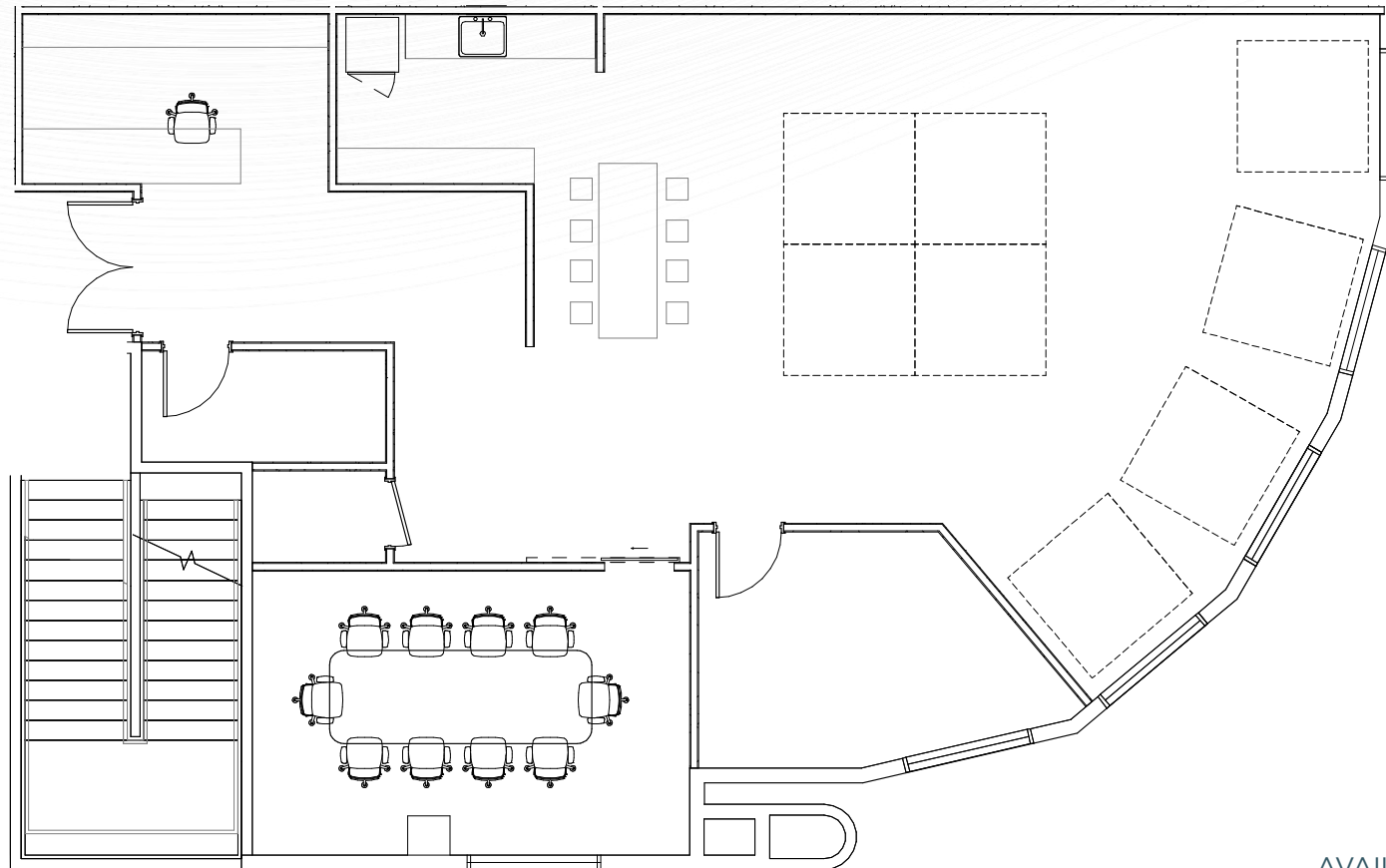


# NEXUS

AT GREEN VALLEY CORPORATE CENTER

# 1401 N. GREEN VALLEY PARKWAY

**SUITE 250** | ±2,211 RSF  
AVAILABLE 120 DAYS POST LEASE EXECUTION



AVAILABLE 5/1/26

FOR MORE INFORMATION,  
PLEASE CONTACT:

## CHARLES VAN GEEL

Senior Director  
+1 702 688 6966  
charles.vangeel@cushwake.com  
LIC #BS.044616 / PM.162448

## MATTHEW BEBAN

Associate  
+1 702 364 5353  
matthew.beban@cushwake.com  
LIC #S.0202638

EST. 1984  
**Brentwood**





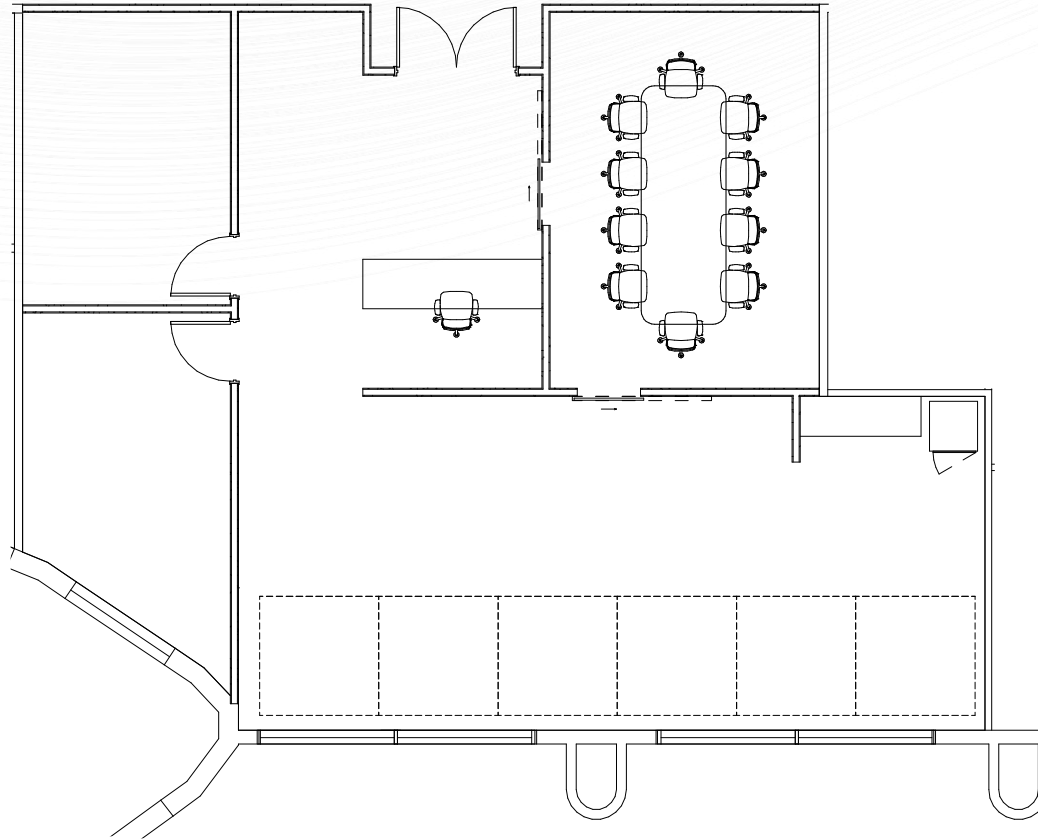
# NEXUS

AT GREEN VALLEY CORPORATE CENTER

# 1401

 N. GREEN VALLEY  
PARKWAY

SUITE 280 | ±1,797 RSF  
AVAILABLE 7/1/26



FOR MORE INFORMATION,  
PLEASE CONTACT:

## CHARLES VAN GEEL

Senior Director  
+1 702 688 6966  
charles.vangeel@cushwake.com  
LIC #BS.044616 / PM.162448

## MATTHEW BEBAN

Associate  
+1 702 364 5353  
matthew.beban@cushwake.com  
LIC #S.0202638

EST. 1984  
Brentwood





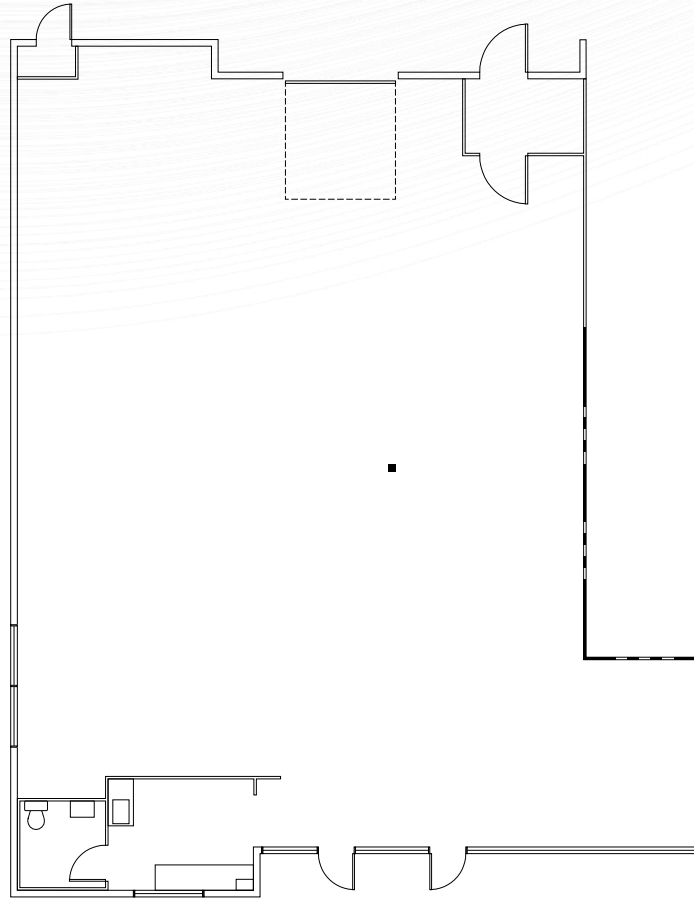
# NEXUS

AT GREEN VALLEY CORPORATE CENTER

# 2250

 CORPORATE CIRCLE

SUITE 300 | ±3,661 RSF



FOR MORE INFORMATION,  
PLEASE CONTACT:

### CHARLES VAN GEEL

Senior Director  
+1 702 688 6966  
charles.vangeel@cushwake.com  
LIC #BS.044616 / PM.162448

### MATTHEW BEBAN

Associate  
+1 702 364 5353  
matthew.beban@cushwake.com  
LIC #S.0202638

EST. 1984  
Brentwood

