

1050

E GRANT LINE

TRACY, CA

±176,300 SF industrial warehouse space



Divisible to ±45,120,
63,740 SF & ±67,440 SF



LED lighting



Fully refurbished



Fenced yard
available

FOR
LEASE

STOCKBRIDGE  JLL

Jones Lang LaSalle Brokerage, Inc. Real Estate License #01856260.

1050 E Grant Line Rd, Tracy, CA

Building specs

Building Size	±219,500 SF
Total Available	±176,300 SF total
Unit 200	<ul style="list-style-type: none">• Available SF: ±45,120 SF• Office: ±380 SF• Grade level doors: 1• Dock doors: 11
Unit 300	<ul style="list-style-type: none">• Available SF: ±67,440 SF• Office: ±741 SF• Grade level doors: 1• Dock doors: 10
Unit 400	<ul style="list-style-type: none">• Available SF: ±63,740 SF• Office: ±4,582 SF• Grade level door: 1• Dock doors: 13
Yard	±18,500 SF fenced yard / storage
Clear height	±25'
Power	277/480v (as indicated)
Fire suppression	Wet - 0.38/2,000
Dimensions	240' x 180'
Column spacing	30' x 60' (typical)
Construction type	Concrete tilt-up
Gas & electric	PG&E
Zoning	M-1, Light Industrial (City of Tracy)
Lease rate	Contact broker



Finished renovations:

- **New** office paint
- **New** office flooring
- **New** restroom finishes
- **LED** office and warehouse lights
- **White**-box warehouse
- **Fresh** slurry seal/ striping in truck court

Site plan

±176,300 SF total available



- Available
- Occupied
- Dock door
- Grade level door

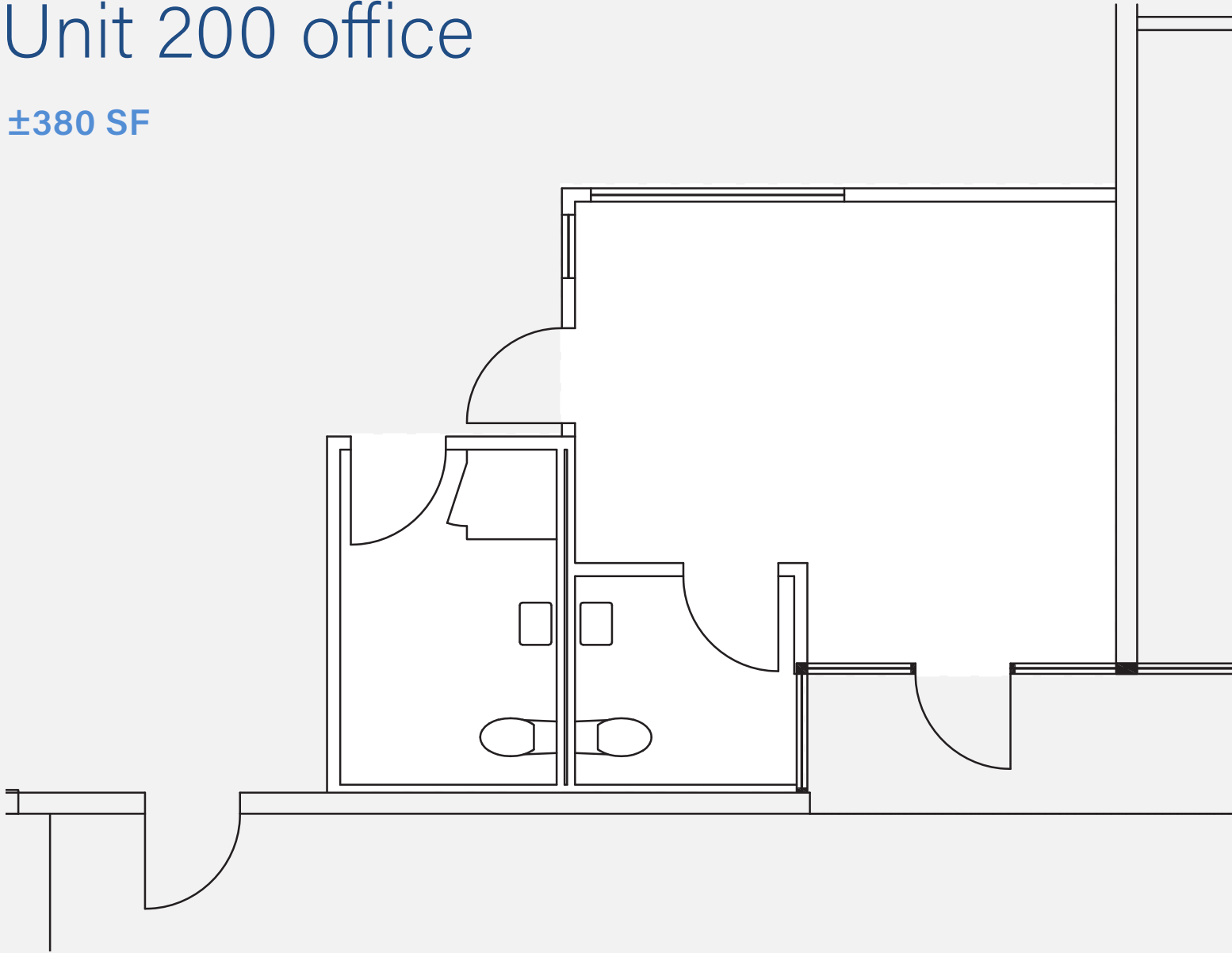
E GRANT LINE ROAD



1050 E Grant Line Rd, Tracy, CA

Unit 200 office

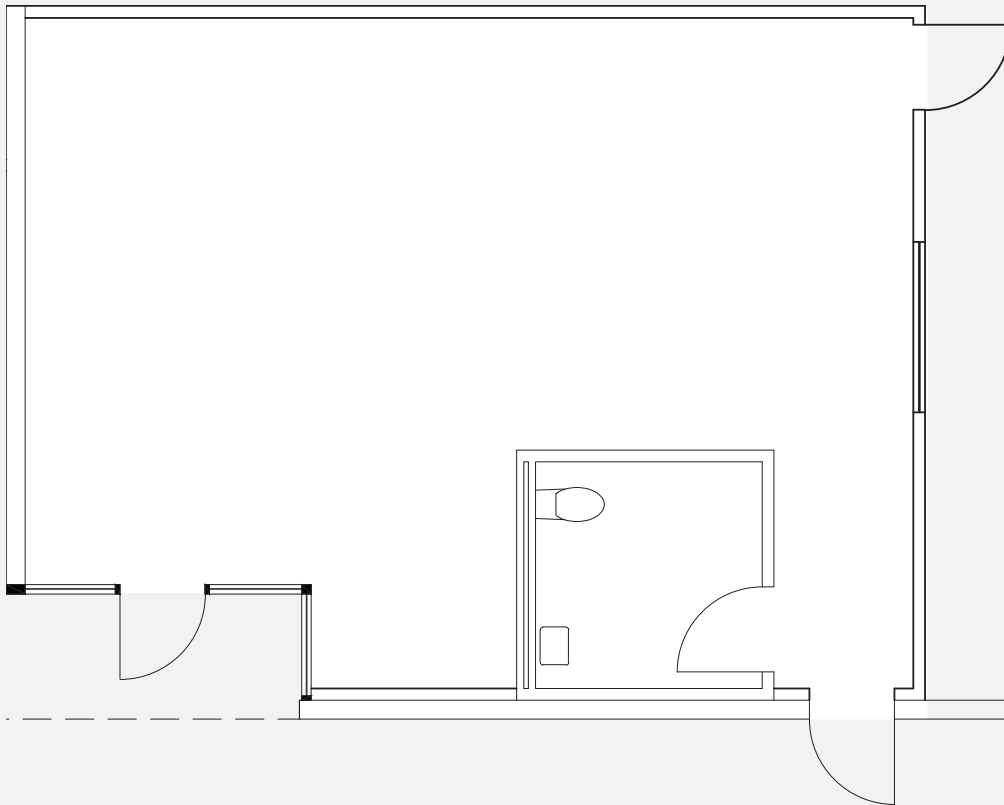
±380 SF



1050 E Grant Line Rd, Tracy, CA

Unit 300 office

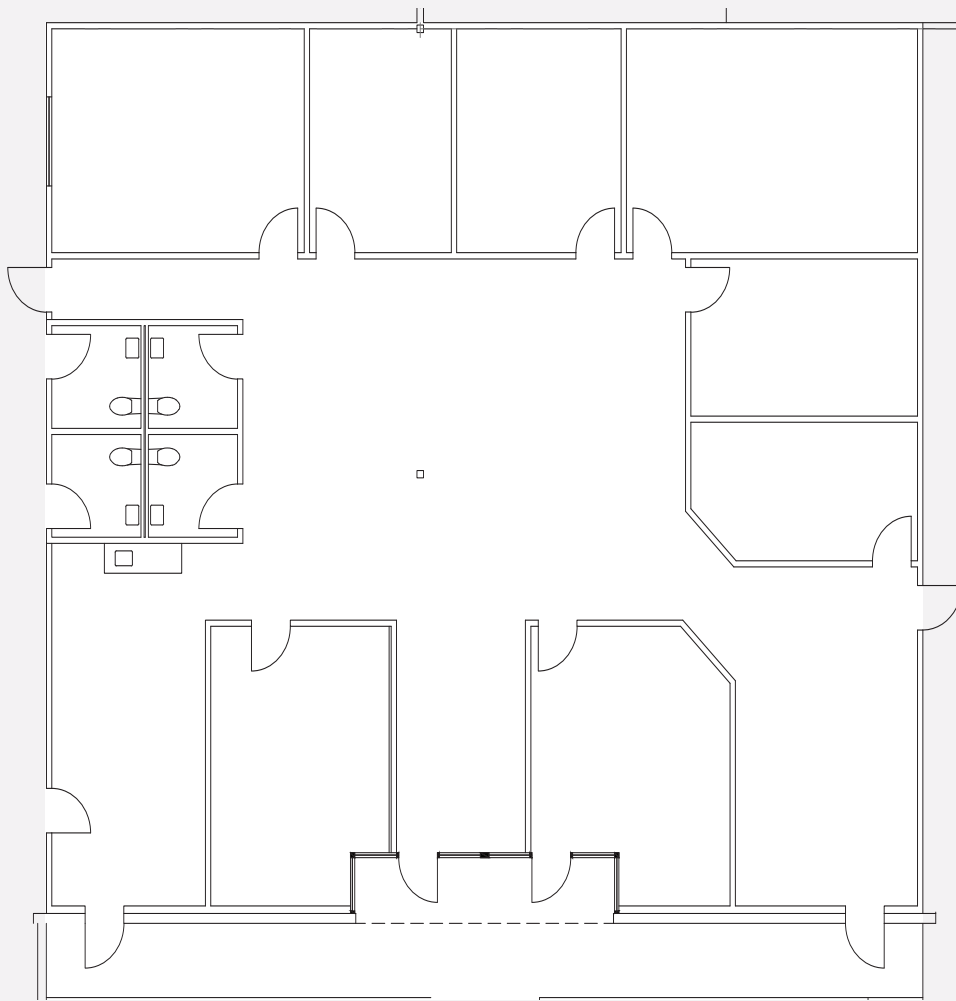
±741 SF



1050 E Grant Line Rd, Tracy, CA

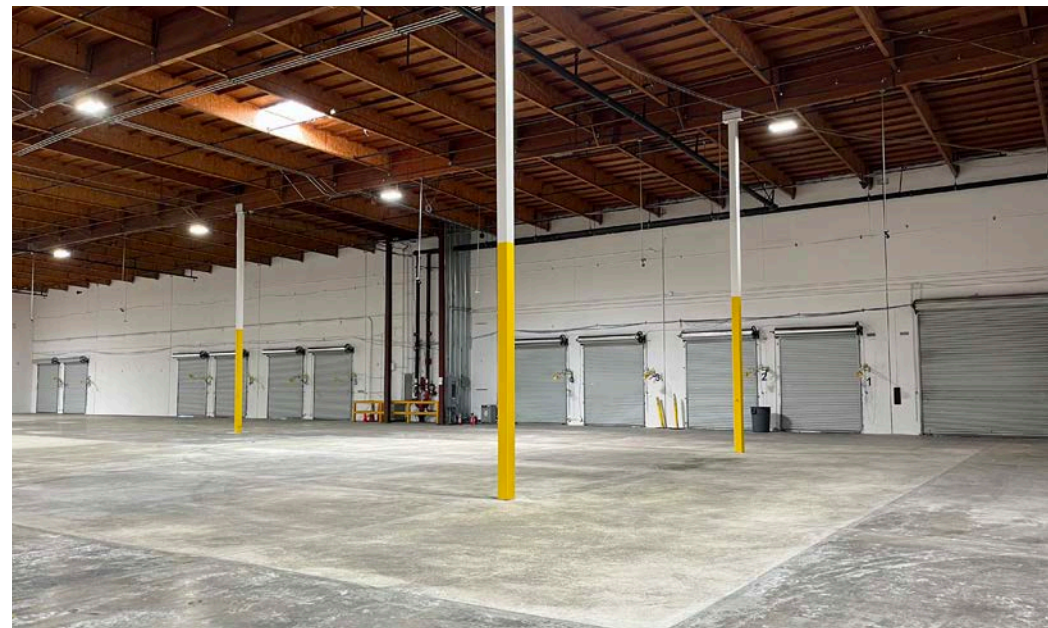
Unit 400 office

±4,582 SF



1050 E Grant Line Rd, Tracy, CA

Warehouse photos



1050 E Grant Line Rd, Tracy, CA

Corporate neighbors

1. Iron Mountain, Hollingsworth
2. Clutter
3. YRC Freight
4. Restoration Hardware
5. McLane
6. Lowe's
7. Young's Market Company
8. The Home Depot
9. DHL
10. Fema Distribution Center
11. Victory Packaging
12. Veritiv
13. Smart & Final
14. Hawthorne Gardening
15. Chep, Us Foods
16. Lucid
17. Volumetric
18. Kellogg's
19. Barbosa Cabinets, Inc.
20. Amazon
21. Crate & Barrel
22. Crate & Barrel
23. Amazon
24. NFI
25. Taylor Farms
26. United States Cold Storage
27. Phillips Delivery
28. Pacific Drayage Services (PDS)
29. Pepsi
30. Leggett & Platt
31. Crate & Barrel



Strong workforce attracts top-tier occupiers

Within 30-min drive time

535,234

Estimated population
(2023)

\$87,796

Median household income
(2023)

\$36,260

Per capita income
(2023)

16,105

Total businesses
(2023)

202,983

Total employees
(2023)

Average hourly earnings for industrial labor

\$20.22

Shipping, receiving & inventory clerks, laborers and freight, stock & material movers (hand), and stockers and order fillers

\$21.55

Packaging occupations including machine operators and tenders

\$30.70

First-line supervisors of transportation and material moving (except aircraft cargo handling)

\$24.44

Truck drivers: heavy and tractor-trailer, light truck, and tractor operations

The industrial workforce

74,498

Total number of Industrial jobs

68,839





Total number of resident workers across industrial classifications

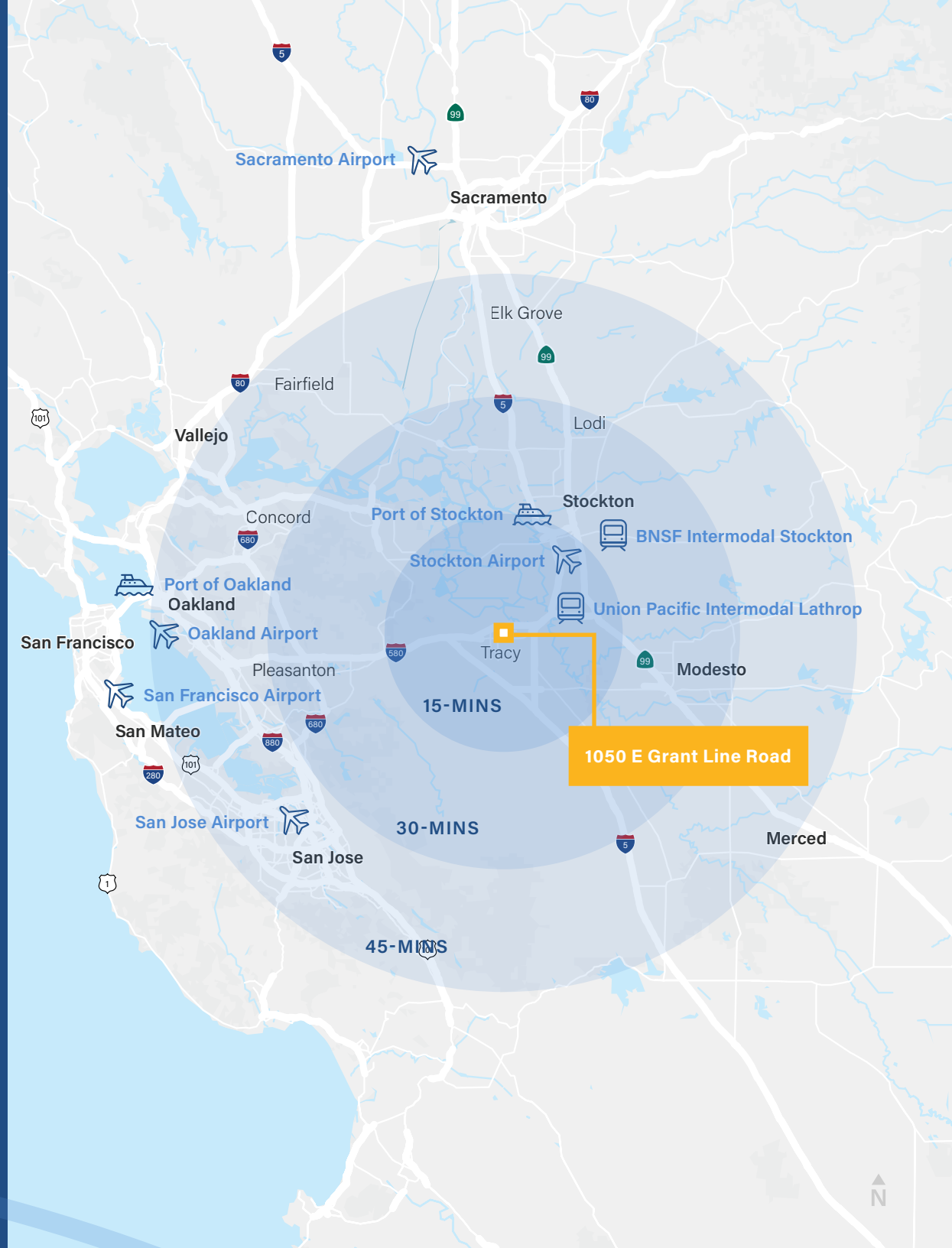
5,659

Total number of net commuters (inflow - outflow) across industrial classifications

1050 E Grant Line Rd, Tracy, CA

Proximity to the entire Bay Area

	Interstate 205 1.0 mi	Interstate 580 9.5 mi	Interstate 5 3.8 mi
	Union Pacific Intermodal (Lathrop) 13.1 mi	BNSF Intermodal (Stockton) 27.0 mi	
	Port of Stockton 20.0 mi	Port of Oakland 53.5 mi	
	Stockton Metropolitan Airport 17.1 mi	Sacramento International Airport 75.5 mi	Oakland International Airport 47.5 mi
	San Jose International Airport 54.8 mi	San Francisco International Airport 65.7 mi	



1050 E Grant Line Rd, Tracy, CA

Exclusively
listed by

John Fondale, SIOR
Senior Managing Director
+1 209 390 1694
john.fondale@jll.com
RE Lic # 01017415

Tim Mustin
Senior Managing Director
+1 209 390 1687
tim.mustin@jll.com
RE Lic # 01857876

Mike Matter
Vice President
+1 209 390 1702
michael.matter@jll.com
RE Lic # 01435801



FOR
LEASE

STOCKBRIDGE  JLL

Although information has been obtained from sources deemed reliable, neither Owner nor JLL makes any guarantees, warranties or representations, express or implied, as to the completeness or accuracy as to the information contained herein. Any projections, opinions, assumptions or estimates used are for example only. There may be differences between projected and actual results, and those differences may be material. The Property may be withdrawn without notice. Neither Owner nor JLL accepts any liability for any loss or damage suffered by any party resulting from reliance on this information. If the recipient of this information has signed a confidentiality agreement regarding this matter, this information is subject to the terms of that agreement. ©2025. Jones Lang LaSalle IP, Inc. All rights reserved