

FOR Lease

1620 S. MAIN STREET

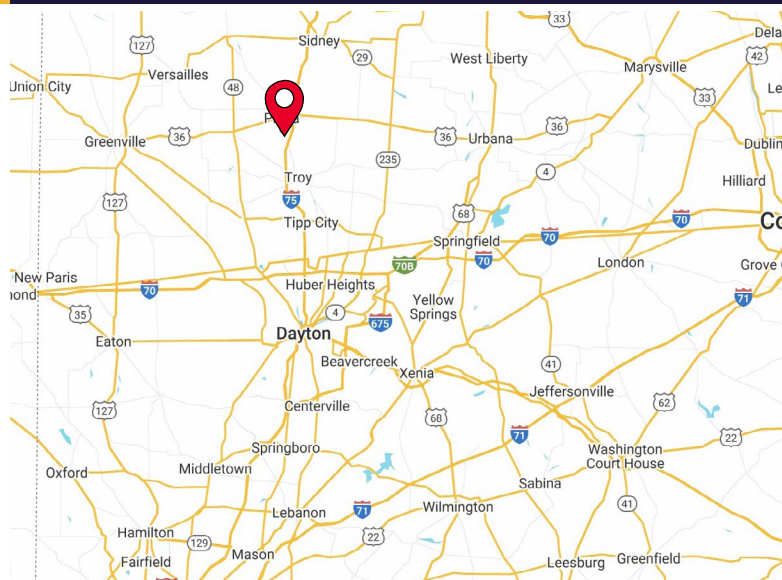
PIQUA, OH 45356



MANUFACTURING/WAREHOUSE

BASE RENT: \$4.5/SF

- 105,000 SF Available
- 11,872 SF Office
- 80,068 SF Manufacturing/Warehouse
- ±4,500 SF Covered Storage
- 8.13 Acres
- (7) Dock Doors
- (2) Drive-in Doors
- Fully Air Conditioned
- Opex \$1.2/SF



For more information, contact:

IVY CHEN
+1 832 837 7333
Ivy.chen@uswhse.com

USWHSE, Inc.
7001 Corporate Dr. suite 135, Houston, TX 77036

FOR Lease

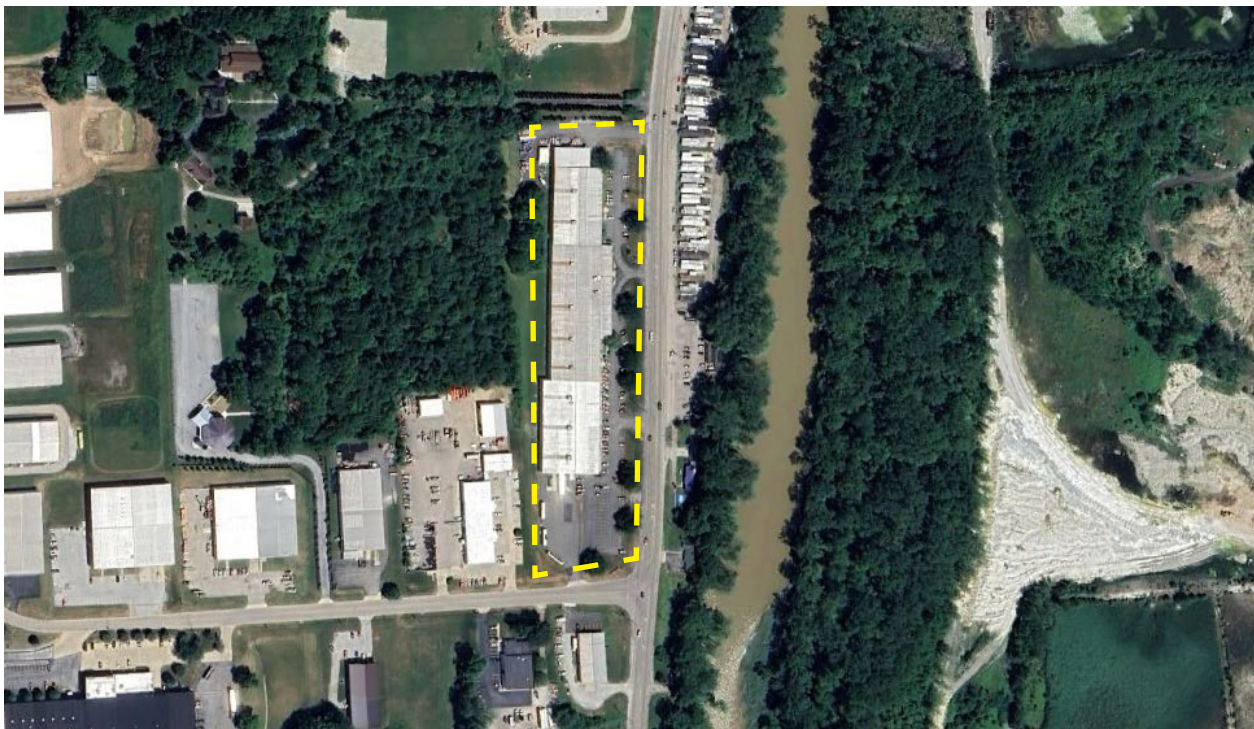
1620 S. MAIN STREET

PIQUA, OH 45356



JURISDICTION	Piqua	DOCK DOORS	(7) Dock Doors
AVAILABLE SIZE	105,000 SF	DRIVE-IN DOORS	(2) Drive-in Doors; 12'x12' & 12'x14'
OFFICE SIZE	11,872 SF	ELECTRIC	480V, 3-phase
WAREHOUSE SIZE	80,068 SF	HVAC	100%
COVERED STORAGE	4,500 SF	UTILITIES	
YEAR BUILT	1986, 1991, 1998	ELECTRIC	www.piquaoh.org
ACRES	8.13 Acres	GAS	www.piquaoh.org
ZONING	Piqua City - Industrial Heavy	WATER	www.piquaoh.org
PARKING	±170 Auto Spaces	SEWER	www.piquaoh.org
FIRE SUPPRESSION	100% Sprinkler	TELEPHONE	www.spectrum.com
ROOF	Pitched metal	DATA	www.spectrum.com
		REAL ESTATE TAXES	\$50,417.82 (2024)

AERIAL

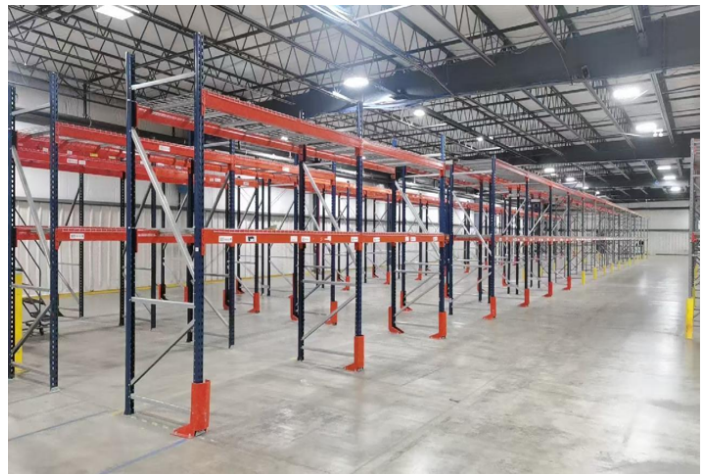
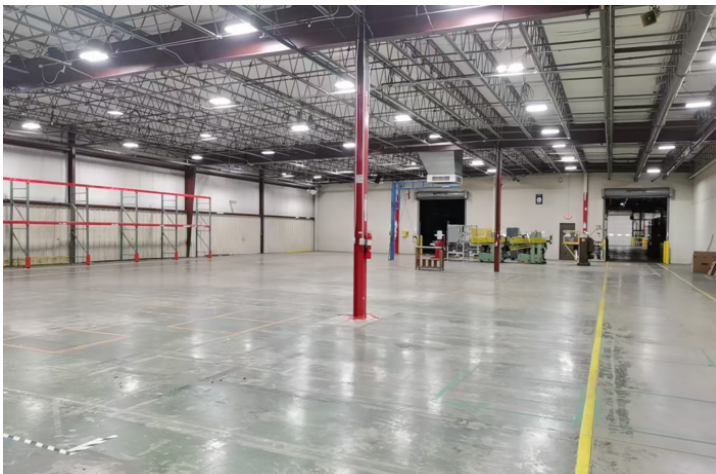


FOR Lease

1620 S. MAIN STREET
PIQUA, OH 45356



PHOTOS



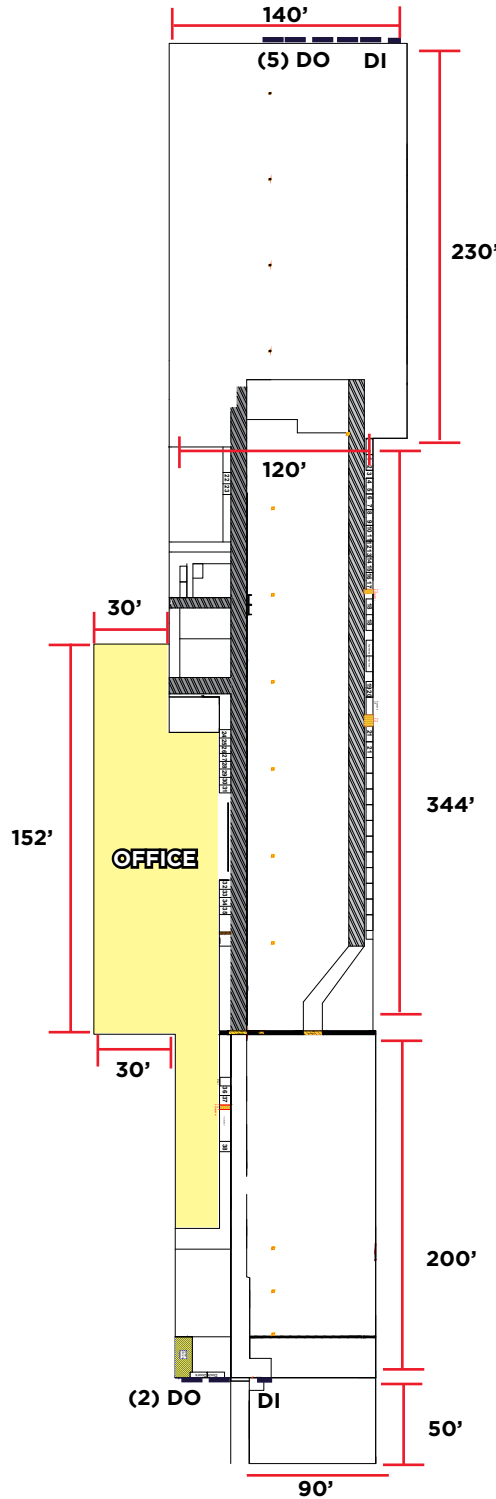
FOR Lease

1620 S. MAIN STREET

PIQUA, OH 45356



FLOOR PLAN



ADDITION #2 (SOUTH)

YEAR BUILT	1997
TOTAL SF	22,200 SF
OFFICE SF	0 SF
WAREHOUSE SF	32,200 SF
WAREHOUSE DIMENSIONS	50' x 90'
COLUMN SPACING	50' x 80' 50' x 60'
CLEARANCE	13' - 17'

ADDITION #1 (CENTER)

YEAR BUILT	1991
TOTAL SF	45,740 SF
OFFICE SF	8,272 SF
WAREHOUSE SF	37,468 SF
WAREHOUSE DIMENSIONS	344' x 120'
COLUMN SPACING	50' x 60'
CLEARANCE	15' - 17'

ORIGINAL (NORTH)

YEAR BUILT	1988
TOTAL SF	24,000 SF
OFFICE SF	3,600 SF
WAREHOUSE SF	20,400 SF
WAREHOUSE DIMENSIONS	200' x 120'
COLUMN SPACING	50' x 60'
CLEARANCE	15' - 17'

COVERED STORAGE

TOTAL SF	4,500 SF
OFFICE SF	0 SF
WAREHOUSE SF	0 SF
WAREHOUSE DIMENSIONS	50' x 90'

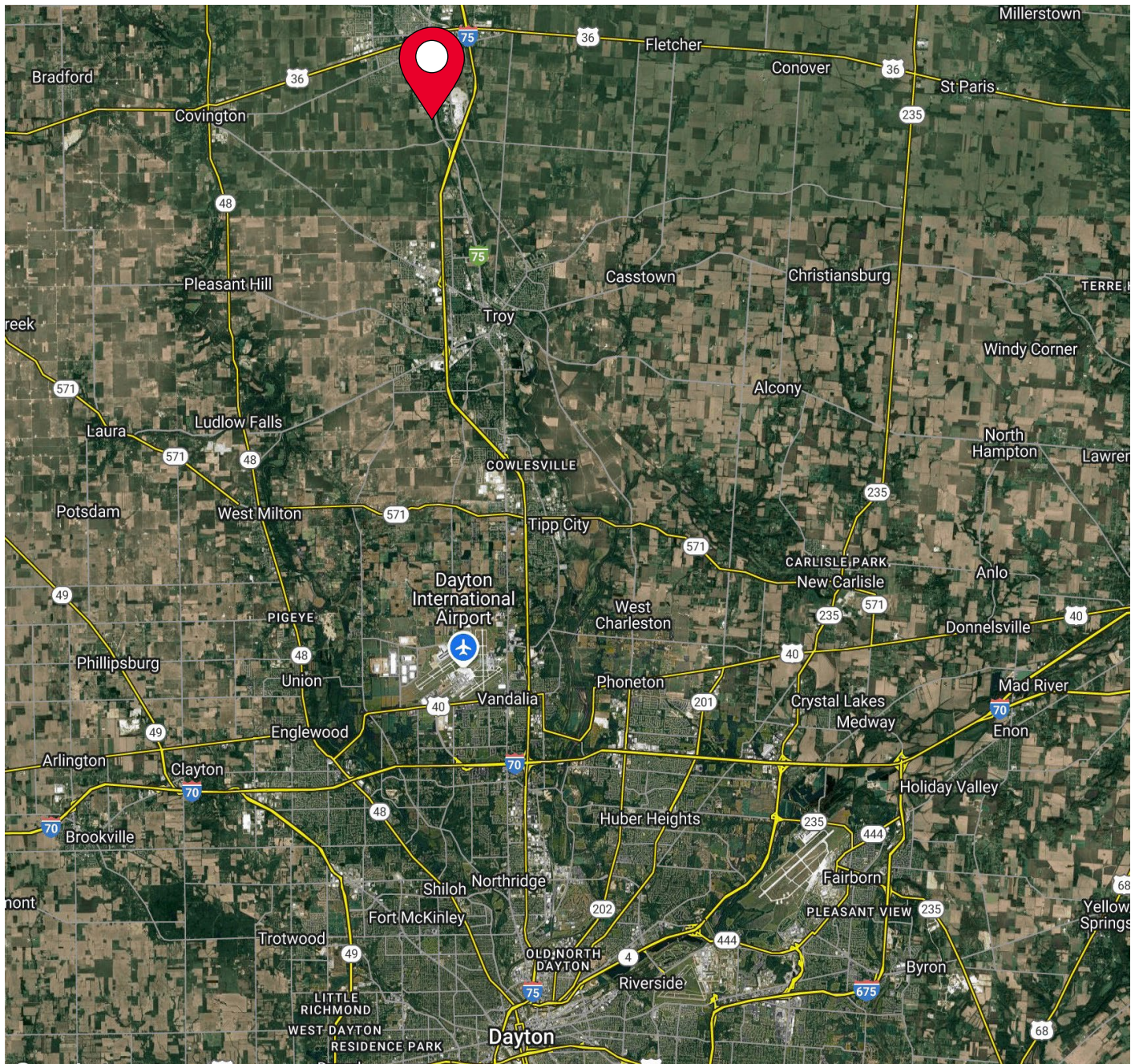
FOR Lease

1620 S. MAIN STREET

PIQUA, OH 45356



AERIAL LOCATION



For more information, contact:

IVY CHEN
+1 832 837 7333
Ivy.chen@uswhse.com

USWHSE, Inc.
7001 Corporate Dr. suite 135, Houston, TX 77036