

# FOR LEASE HIGH BAY WAREHOUSE

Corporate Landing Pkwy  
Virginia Beach, VA



## CONSTRUCTION UNDERWAY

### ABOUT PROPERTY

- 30,000 SF - 100,320 SF (Subdividable)
- Office - Build-to-Suit
- ESFR Fire Suppression
- 28' Clear Ceiling Height
- 4 Dock Doors with Dock Levelers
- 3 Grade-Level Doors
- 3,000 amps, 480 volt, 3-phase electrical service
- Building Dimension - 209' x 480'
- 30' x 69' Column Spacing
- 205 parking spaces
- 6" Reinforced Concrete Slab
- Foreign Trade Zone Eligibility
- Dominion Energy Certified Data Center Park
- Conditional I-L (Light Industrial) Zoning
- Rental Rate: Call Agent



For more information:

**BOBBY BEASLEY, III, SIOR**

757.640.8241

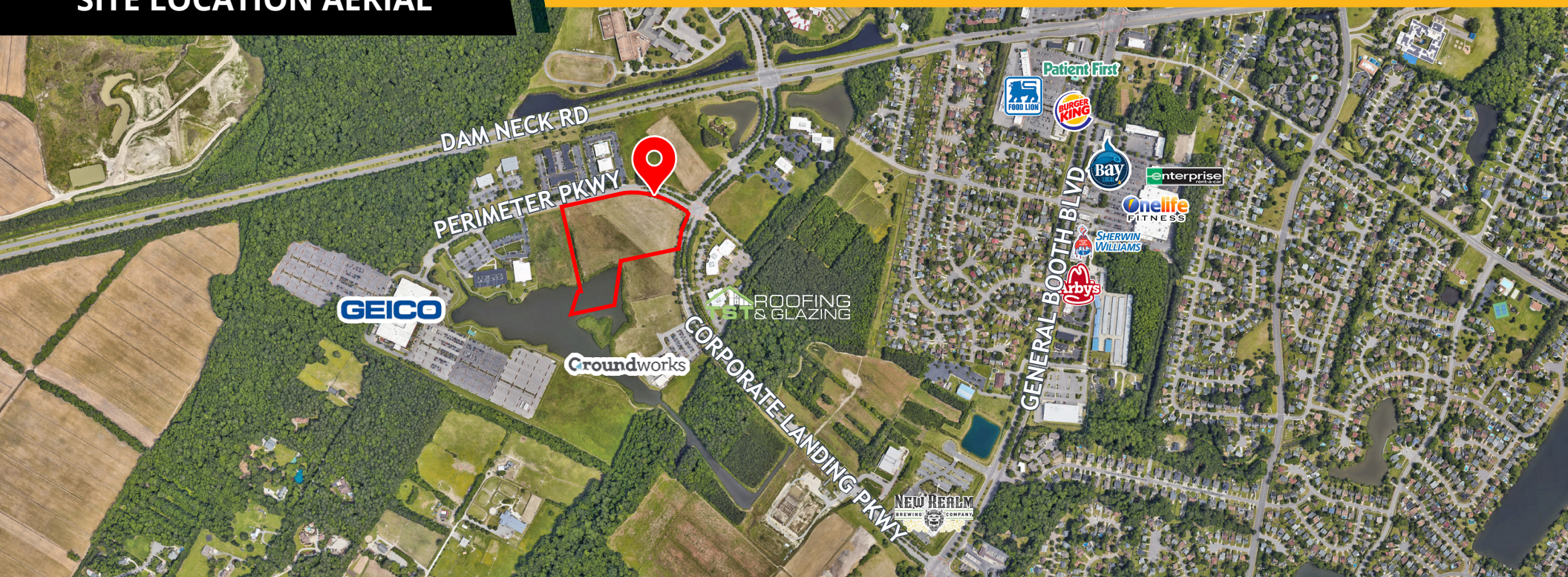
[BobbyBeasley3@HarveyLindsay.com](mailto:BobbyBeasley3@HarveyLindsay.com)

**HARVEY LINDSAY**  
COMMERCIAL REAL ESTATE

[www.harveylindsay.com](http://www.harveylindsay.com)

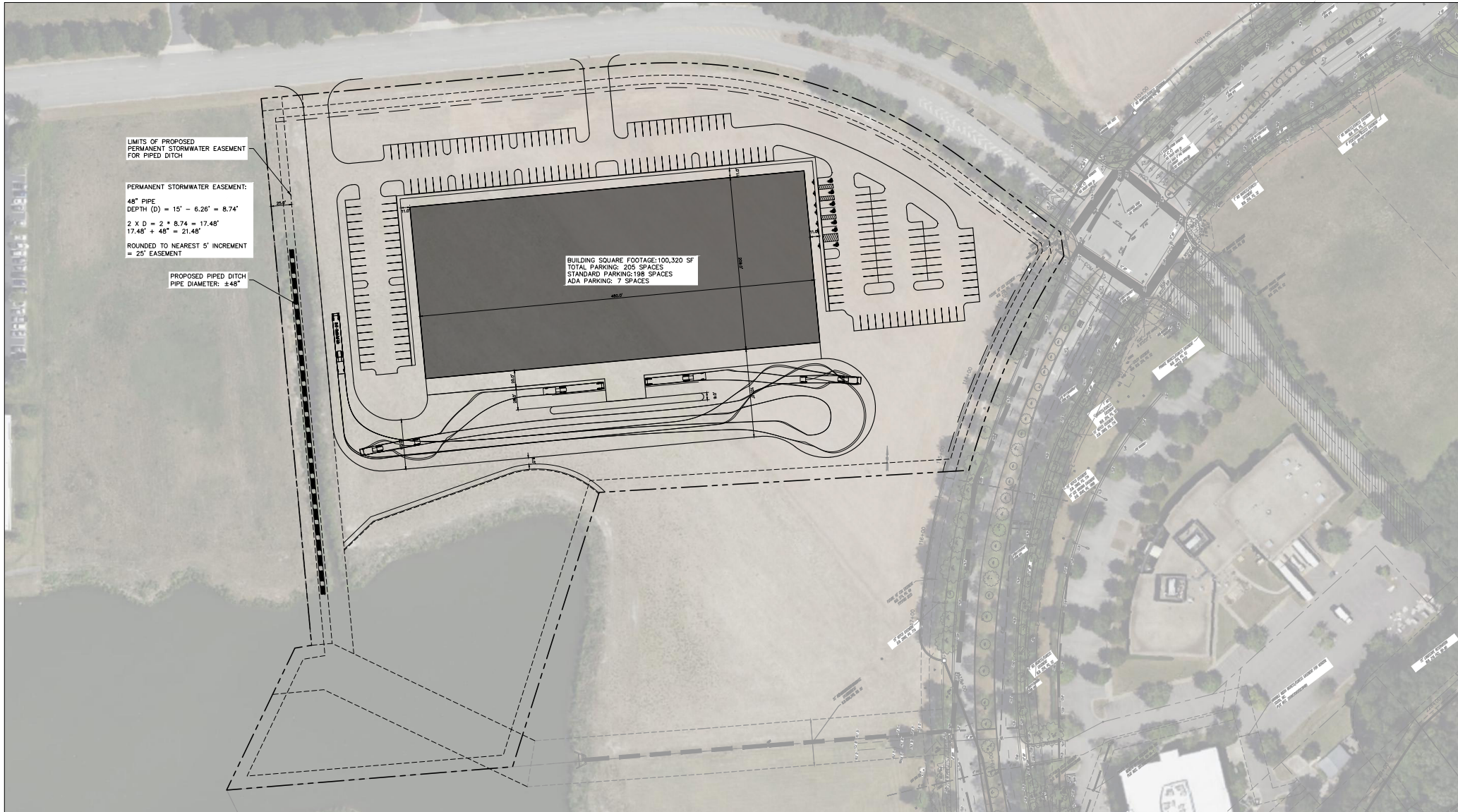
# SITE LOCATION AERIAL

HIGH BAY WAREHOUSE | Corporate Landing Pkwy, Virginia Beach, VA

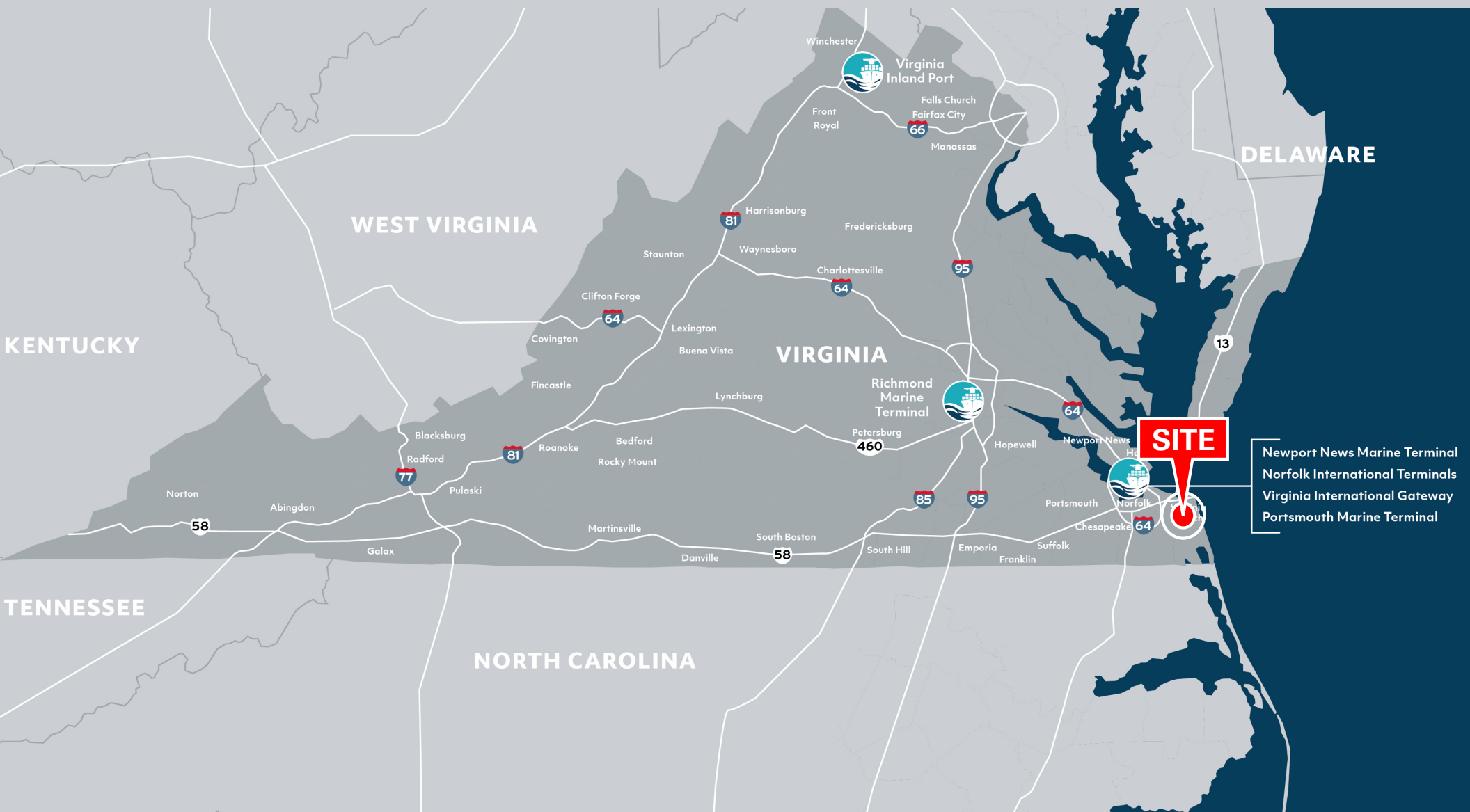


The information contained herein has been obtained from sources believed to be reliable but is not warranted. We cannot be responsible for errors, omissions, withdrawal, or prior lease or sale.

HARVEY LINDSAY  
COMMERCIAL REAL ESTATE



DISTANCE TO:	
NORFOLK INTERNATIONAL TERMINAL	26.0 miles   36 minutes from subject
VIRGINIA INTERNATIONAL GATEWAY	28.0 miles   42 minutes from subject
NEWPORT NEWS MARINE TERMINAL	26.4 miles   43 minutes from subject
PORTSMOUTH MARINE TERMINAL	26.8 miles   45 minutes from subject
RICHMOND MARINE TERMINAL	113.9 miles   130 minutes from subject





For more information:  
**BOBBY BEASLEY, III, SIOR**  
757.640.8241  
[BobbyBeasley3@HarveyLindsay.com](mailto:BobbyBeasley3@HarveyLindsay.com)

825 Dilligence Drive • Suite 114  
Newport News, Virginia 23666  
757-873-2020  
[www.HarveyLindsay.com](http://www.HarveyLindsay.com)

**HARVEY LINDSAY**  
COMMERCIAL REAL ESTATE