

COLESVILLE PROFESSIONAL PARK

10720, 10750 & 10770 Columbia Pike
Silver Spring, MD 20901

Medical Office For Lease

1,057 - 16,767 SF



Leasing Information:
301.304.8300

Paul "Rocky" Kern
301.304.8399
pkern@lpc.com

Brent Prossner
410.659.1234 x122
bprossner@lpc.com

Richard Coppola
301.304.8405
rcoppola@lpc.com

Lincoln

Lincoln Property Company
1101 Wootton Pkwy Suite 410
Rockville, MD 20854

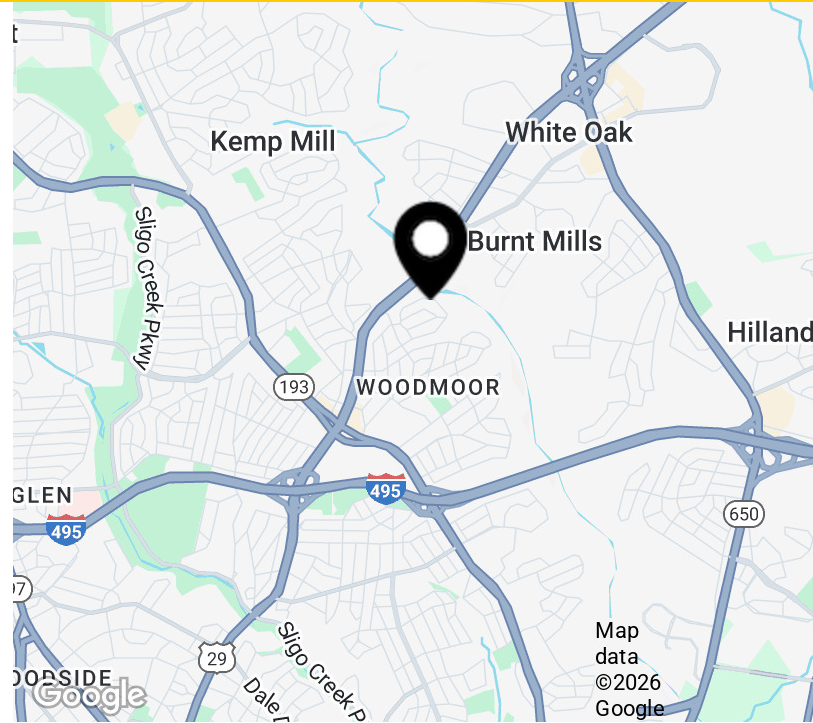
www.lpc.com

COLESVILLE PROFESSIONAL PARK

Office For Lease

1,057 - 16,767 SF

10720, 10750 & 10770 Columbia Pike | Silver Spring, MD 20901



Property Highlights

- Campus environment with three buildings and landscaped open areas
- Close proximity to Holy Cross Hospital and Adventist HealthCare White Oak Pavilion
- On-site fitness center
- On-site management
- On-site cafe
- Free structured and surface parking (3.7/1,000 SF)

Availabilities

- 10720 - Suite 201
- 10720 - Suite 500
- 10750 - Suite 315
- 10750 - 5th Floor
- 10770 - Storage
- 10770 - 1st Floor
- 10770 - Suite 250

SF

- 2,809 SF
- 2,876 SF
- 1,430 SF
- 1,057 SF
- 16,767 SF
- 4,374 SF
- 11,326 SF

Date Available

- Immediately
- Immediately
- Immediately
- Immediately
- Immediately
- Immediately
- 120 days

Paul "Rocky" Kern

301.304.8399
pkern@lpc.com

Brent Prossner

410.659.1234 x122
bprossner@lpc.com

Richard Coppola

301.304.8405
rcoppola@lpc.com

Lincoln

COLESVILLE PROFESSIONAL PARK

10720, 10750 & 10770 Columbia Pike | Silver Spring, MD 20901

Nearby Amenities

1,057 - 16,767 SF



Paul "Rocky" Kern

301.304.8399
pkern@lpc.com

Brent Prossner

410.659.1234 x122
bprossner@lpc.com

Richard Coppola

301.304.8405
rcoppola@lpc.com

Lincoln

COLESVILLE PROFESSIONAL PARK

10720, 10750 & 10770 Columbia Pike | Silver Spring, MD 20901

10720 - 2nd Floor

2,809 SF



LEASED

Suite	Size	Description
■ 10720 - Suite 201	2,809 SF	Available Immediately

Paul "Rocky" Kern

301.304.8399
pkern@lpc.com

Brent Prossner

410.659.1234 x122
bprossner@lpc.com

Richard Coppola

301.304.8405
rcoppola@lpc.com

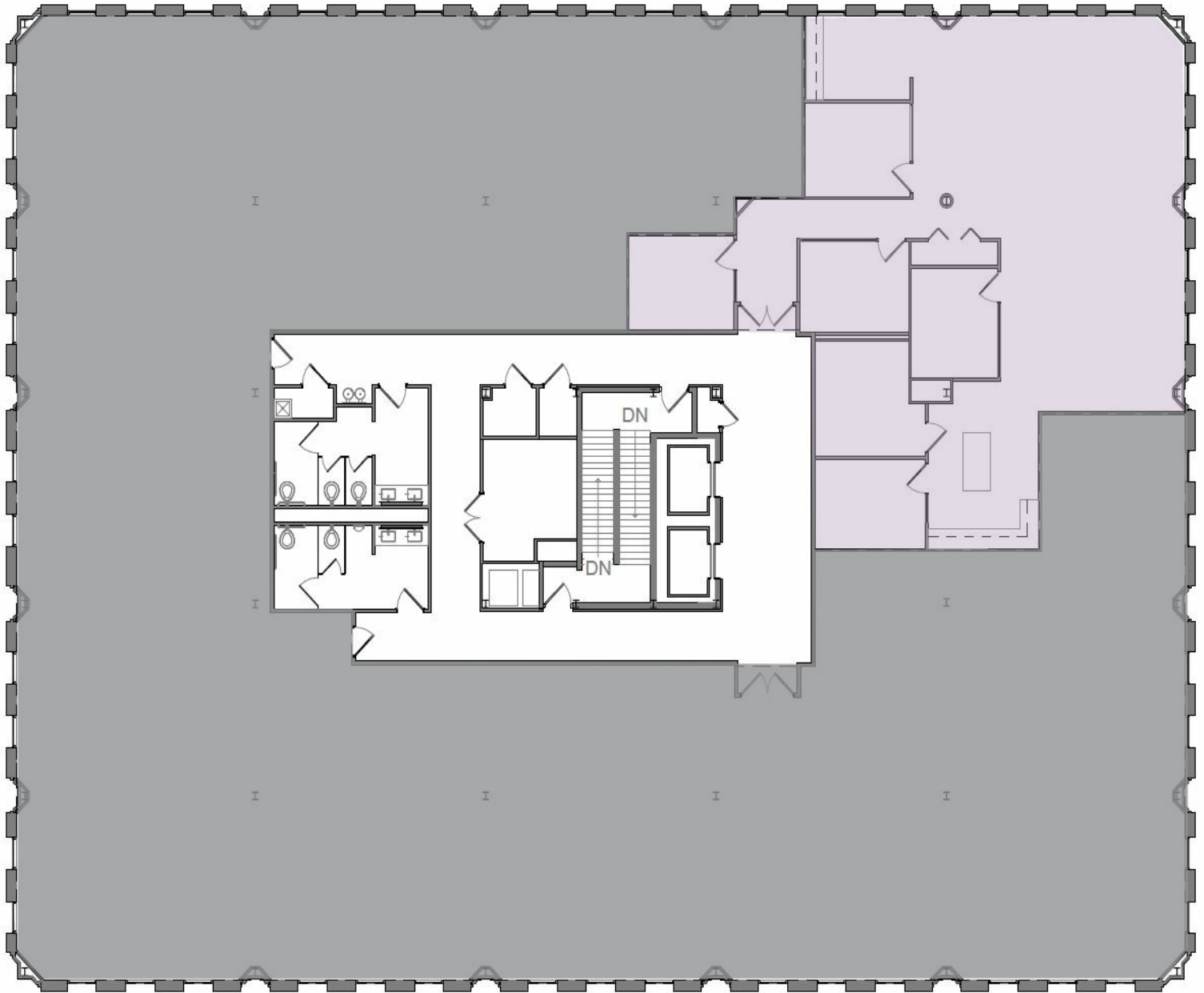
Lincoln

COLESVILLE PROFESSIONAL PARK

10720, 10750 & 10770 Columbia Pike | Silver Spring, MD 20901

10720 - 5th Floor

2,876 SF



Suite	Size	Description
■ 10720 - Suite 500	2,876 SF	Available Immediately

Paul "Rocky" Kern

301.304.8399
pkern@lpc.com

Brent Prossner

410.659.1234 x122
bprossner@lpc.com

Richard Coppola

301.304.8405
rcoppola@lpc.com

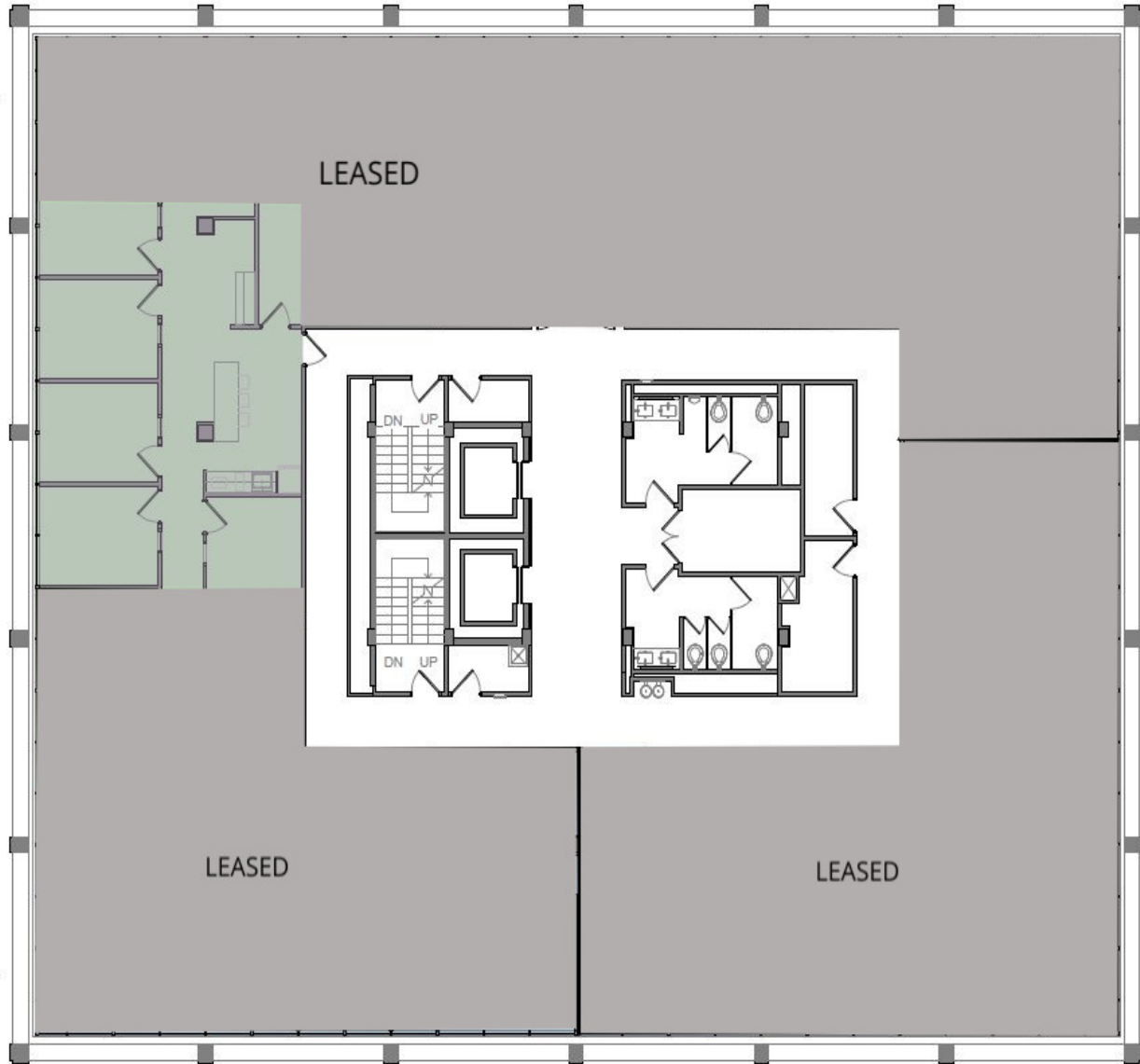
Lincoln

COLESVILLE PROFESSIONAL PARK

10720, 10750 & 10770 Columbia Pike | Silver Spring, MD 20901

10750 - 3rd Floor

1,430 SF



Suite	Size	Description
■ 10750 - Suite 315	1,430 SF	Available Immediately

Paul "Rocky" Kern

301.304.8399
pkern@lpc.com

Brent Prossner

410.659.1234 x122
bprossner@lpc.com

Richard Coppola

301.304.8405
rcoppola@lpc.com

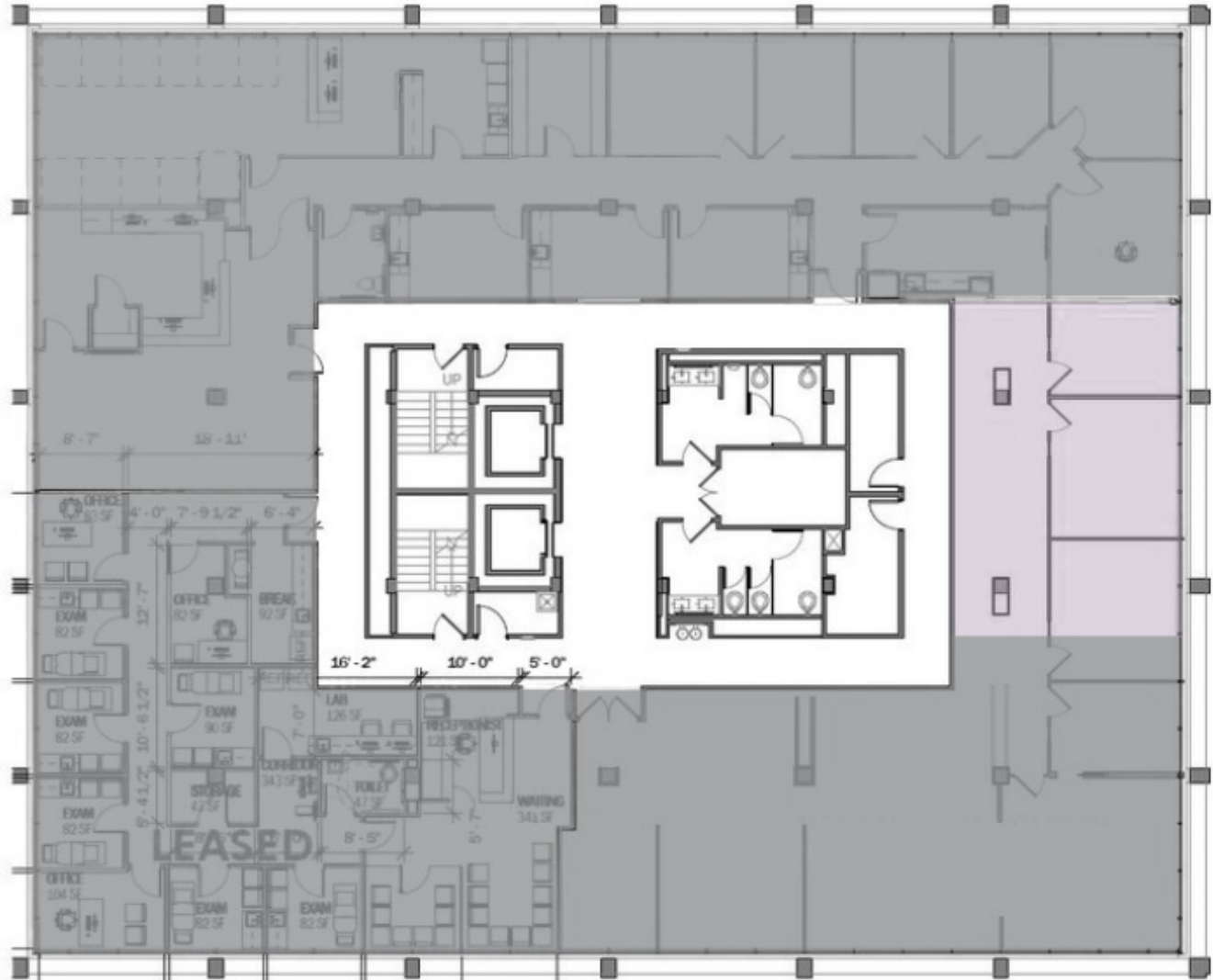
Lincoln

COLESVILLE PROFESSIONAL PARK

10720, 10750 & 10770 Columbia Pike | Silver Spring, MD 20901

10750 - Fifth Floor

1,057 SF



Suite	Size	Description
■ 10750 - 5th Floor	1,057 SF	Available Immediately

Paul "Rocky" Kern

301.304.8399
pkern@lpc.com

Brent Prossner

410.659.1234 x122
bprossner@lpc.com

Richard Coppola

301.304.8405
rcoppola@lpc.com

Lincoln

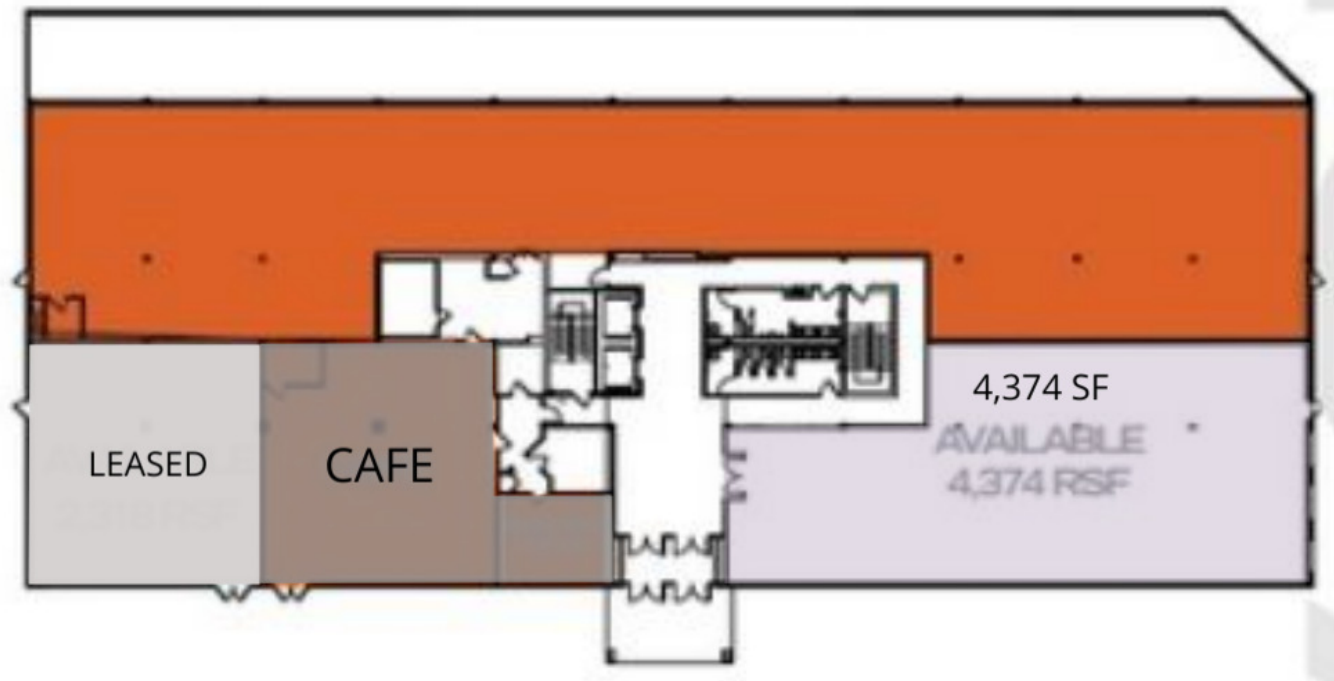
COLESVILLE PROFESSIONAL PARK

10720, 10750 & 10770 Columbia Pike | Silver Spring, MD 20901

10770 - 1st Floor

4,374 SF

1ST FLOOR



Suite	Size	Description
■ 10770 - 1st Floor	4,374 SF	Shell space, ready for buildout.

Paul "Rocky" Kern

301.304.8399
pkern@lpc.com

Brent Prossner

410.659.1234 x122
bprossner@lpc.com

Richard Coppola

301.304.8405
rcoppola@lpc.com

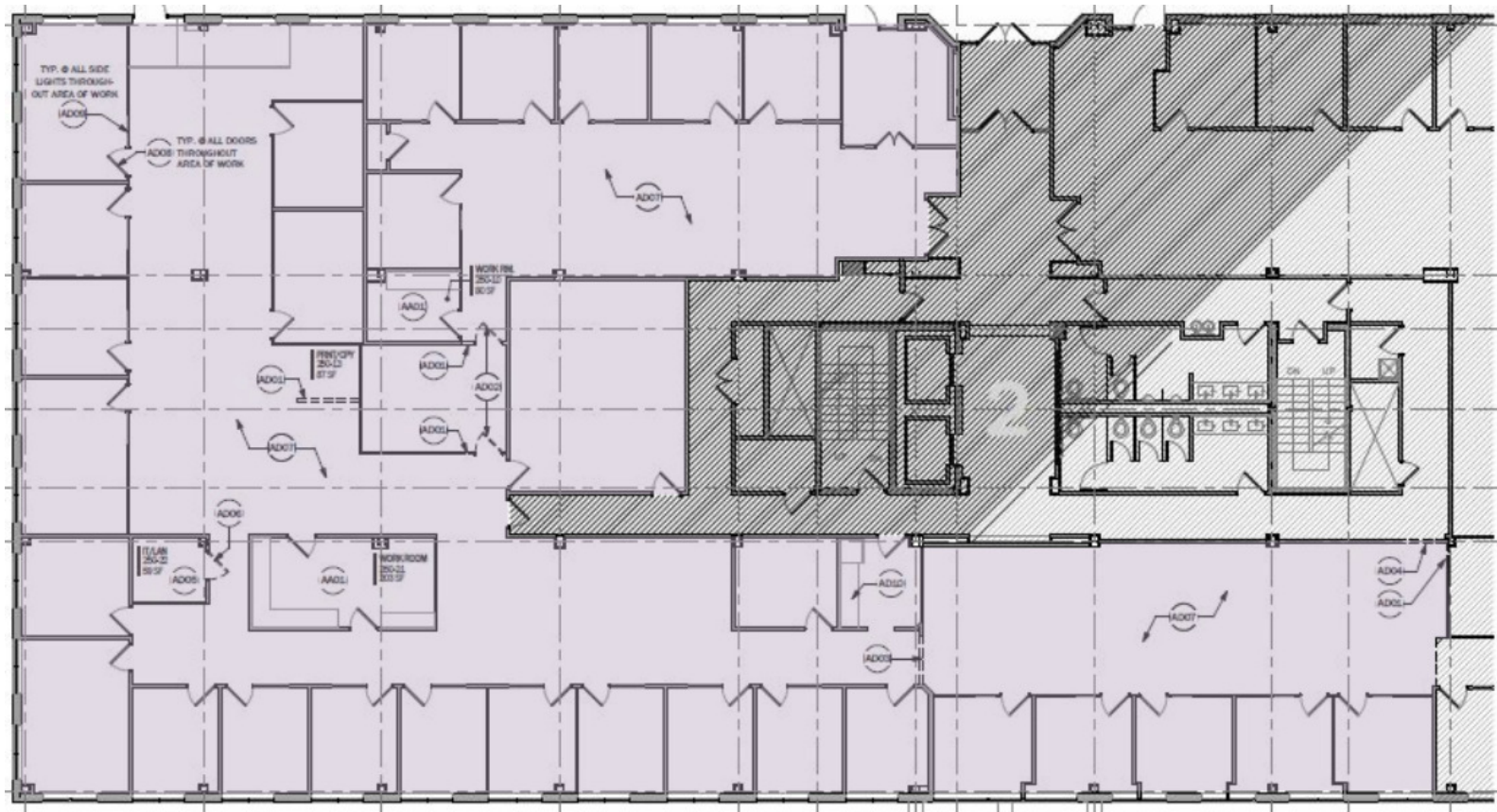
Lincoln

COLESVILLE PROFESSIONAL PARK

10720, 10750 & 10770 Columbia Pike | Silver Spring, MD 20901

10770 - Suite 250

11,326 SF



Suite	Size	Description
■ 10770 - Suite 250	11,326 SF	Available within 120 days.

Paul "Rocky" Kern

301.304.8399
pkern@lpc.com

Brent Prossner

410.659.1234 x122
bprossner@lpc.com

Richard Coppola

301.304.8405
rcoppola@lpc.com

Lincoln



COLESVILLE PROFESSIONAL PARK

10720, 10750 & 10770 Columbia Pike | Silver Spring, MD 20901

Leasing Information:
301.304.8300

Paul "Rocky" Kern
301.304.8399
pkern@lpc.com

Brent Prossner
410.659.1234 x122
bprossner@lpc.com

Richard Coppola
301.304.8405
rcoppola@lpc.com

Lincoln

Lincoln Property Company
1101 Wootton Pkwy Suite 410
Rockville, MD 20854

www.lpc.com