

1965 S. Eagle Road, Ste. 180, Meridian, ID

Monterey Place Building, in El Dorado Business Campus



SPACE DETAILS

SPACE: 1,309 SF Office Space
AVAILABLE: Contact for details
LAYOUT: Private entry on west side. Four (4) private offices, break area and private restrooms
ACCESS: Occupied, contact Sundance for tours.

HIGHLIGHTS

- Centrally located in the Boise Valley, I-84 (Exit 46) less than one mile
- Professional El Dorado Business Campus, provides service and food amenities
- Private entry into tenant space
- Excellent building signage available
- Generous parking included
- Contact for other options in the immediate area owned by Sundance

Call: 208-322-7300

WWW.SUNDANCECO.COM



1965 S. Eagle Road, Ste. 180, Meridian, ID

Monterey Place Building, in El Dorado Business Campus



PROPERTY FEATURES

BLDG TYPE: Office

BLDG SIZE: 25,139 Square Feet

FLOORS: Single Story

PARKING: 5 / 1,000 SF

LEASE TYPE: Full Service, Less Tenant Janitorial

ZONING: City of Meridian, CC

OWNER: Sundance Investments, L.L.P.

Call: 208-322-7300

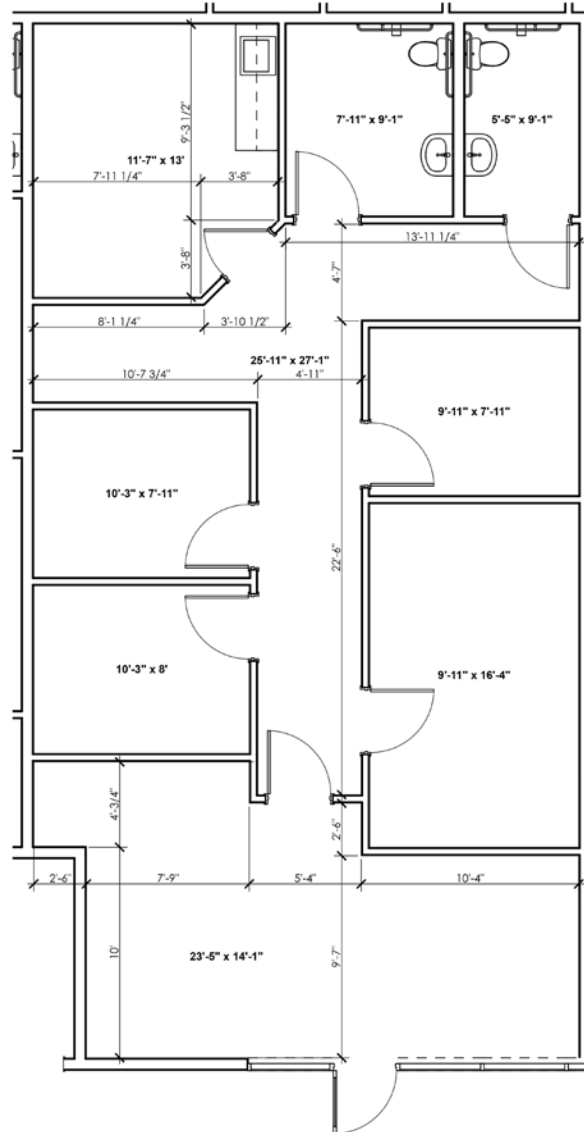
WWW.SUNDANCECO.COM



1965 S. Eagle Road, Ste. 180, Meridian, ID

Monterey Place Building, in El Dorado Business Campus

Floor Plan 1,309 SF



Leasing Contact:

Charlene VanOstrand

(208) 850-2116

Charlene@sundanceco.com

Call: 208-322-7300

WWW.SUNDANCECO.COM

