

WATER OAK

8720 Red Oak Blvd
Charlotte, NC 28217

Office For Lease

2,702 SF



Lincoln

Kristine Al-Taher
704.221.4833
kristine.altaher@lpc.com

Marshall Williamson
704.258.2244
marshall.williamson@lpc.com

4725 Piedmont Row Drive
Suite 800
Charlotte, NC 28210

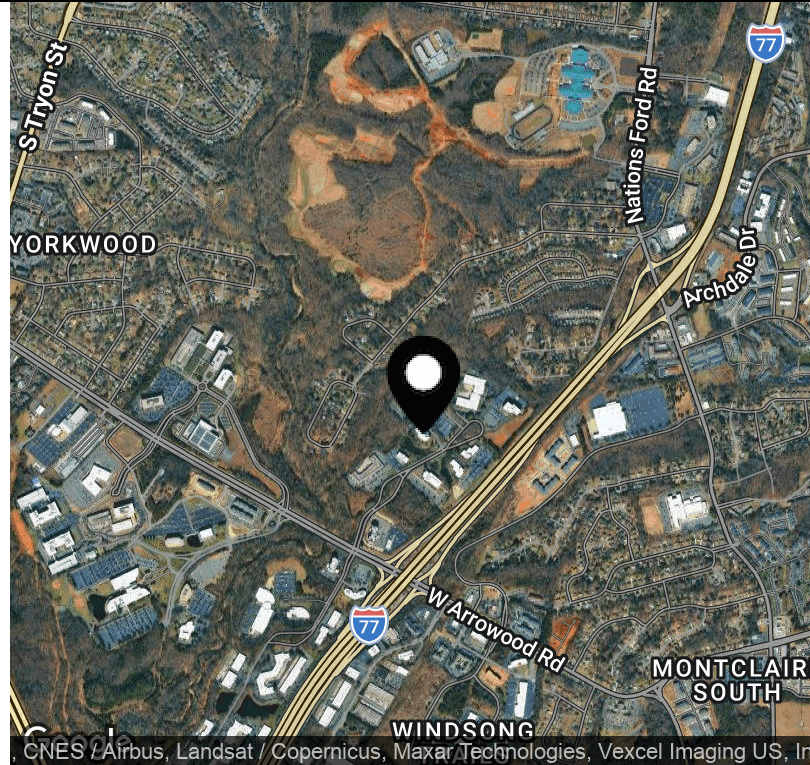
www.lpc.com

WATER OAK

8720 Red Oak Blvd | Charlotte, NC 28217

Property Summary

2,702 SF



Offering Summary

Lease Rate:	Negotiable
Sublease Term:	June 30th, 2029
Available SF:	2,702 SF
Lot Size:	307,560 SF
Building Size:	100,204 SF

Highlights

- Located in Yorkmount submarket
- Regional connectivity to surrounding areas
- Balanced suite layout
- Lots of natural light and generous storage space
- Furniture is negotiable

Property Description

Available 2,702 SF plug-and-play office suite offering an optimal balance of private offices and open workspace. The layout includes a reception area, five offices (or four offices with a conference room option), six cubicles, and a convenient kitchenette. The suite benefits from excellent natural light, generous storage, and a dedicated IT closet, making it an ideal solution for professional office users seeking a turnkey space. Furniture is negotiable.

Location Description

Positioned within the Yorkmount submarket, 8720 Red Oak Blvd offers a strategic and convenient location just off Arrowwood Road near the I-77 and I-485 interchange. This placement provides excellent regional connectivity, allowing quick access to Charlotte's major business corridors, the airport, and Uptown.

Kristine Al-Taher

704.221.4833

kristine.altaher@lpc.com

Marshall Williamson

704.258.2244

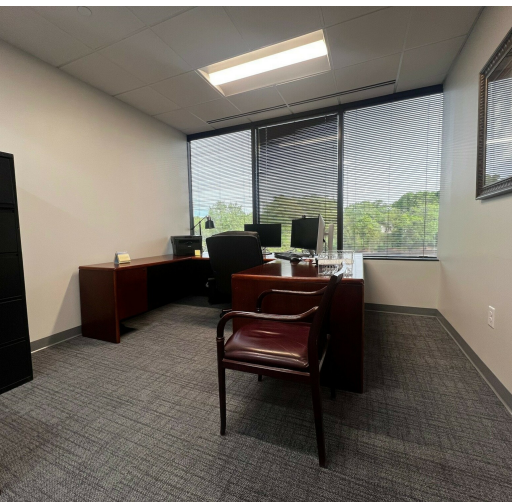
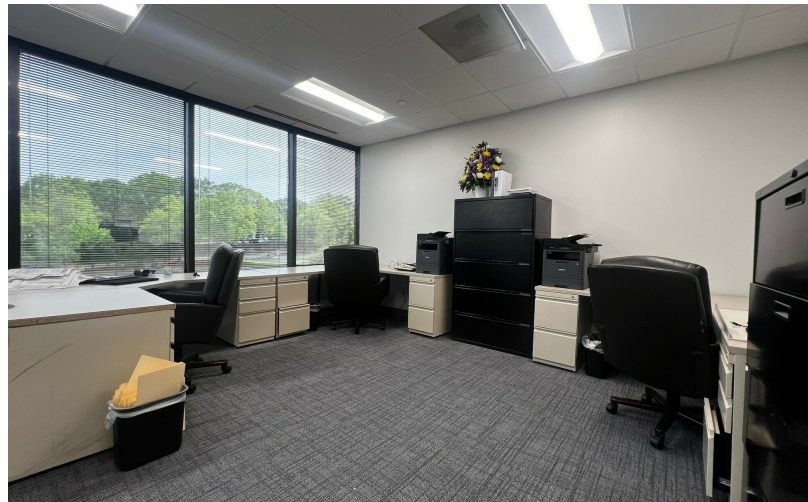
marshall.williamson@lpc.com

Lincoln

WATER OAK

8720 Red Oak Blvd | Charlotte, NC 28217

Property Photos



Kristine Al-Taher
704.221.4833
kristine.altaher@lpc.com

Marshall Williamson
704.258.2244
marshall.williamson@lpc.com

Lincoln

WATER OAK

8720 Red Oak Blvd | Charlotte, NC 28217

Suite 425

2,702 SF



Suite	Size	Lease Rate	Description
Suite 425	2,702 SF	Negotiable	Sublease through June 30th, 2029

Kristine Al-Taher
704.221.4833
kristine.altaher@lpc.com

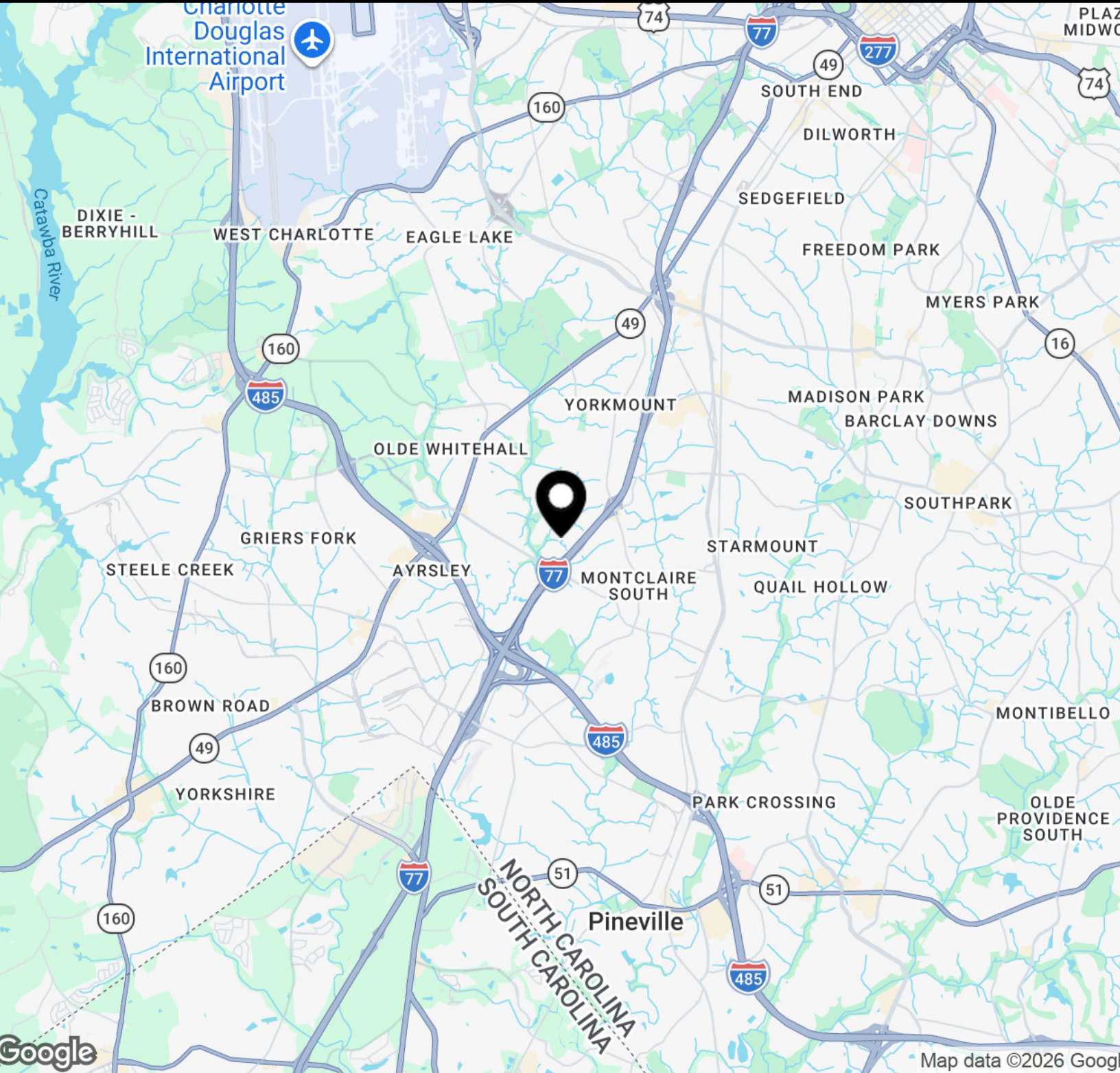
Marshall Williamson
704.258.2244
marshall.williamson@lpc.com



WATER OAK

8720 Red Oak Blvd | Charlotte, NC 28217

Location Map



Kristine Al-Taher
704.221.4833
kristine.altaher@lpc.com

Marshall Williamson
704.258.2244
marshall.williamson@lpc.com

Lincoln

WATER OAK

8720 Red Oak Blvd
Charlotte, NC 28217

Kristine Al-Taher

704.221.4833

kristine.altaher@lpc.com

Marshall Williamson

704.258.2244

marshall.williamson@lpc.com

4725 Piedmont Row Drive
Suite 800
Charlotte, NC 28210
www.lpc.com | 704.714.7600

Lincoln