



OFFICE SPACE AVAILABLE

7001 LOISDALE ROAD
SPRINGFIELD, VIRGINIA

FOR LEASE



FEATURES

- Approximately 4,000-6,419 SF of second floor office
- Available immediately
- Rate: \$20.00/F
- Great location near Beltway and I-95
- Abundant parking
- Stable ownership
- Close to Springfield Metro and MARC train
- Close to Springfield Metro and MARC train



For more information, please contact:

Jon Lawrence
Executive Director
703-847-2787
Jon.Lawrence@cushwake.com

Ed Zaptin
Senior Director
703-847-2730
Ed.Zaptin@cushwake.com

CUSHMAN & WAKEFIELD OF VIRGINIA

1800 Tysons Boulevard | Suite 200
Tysons Corner | VA 22102
www.cushmanwakefield.com

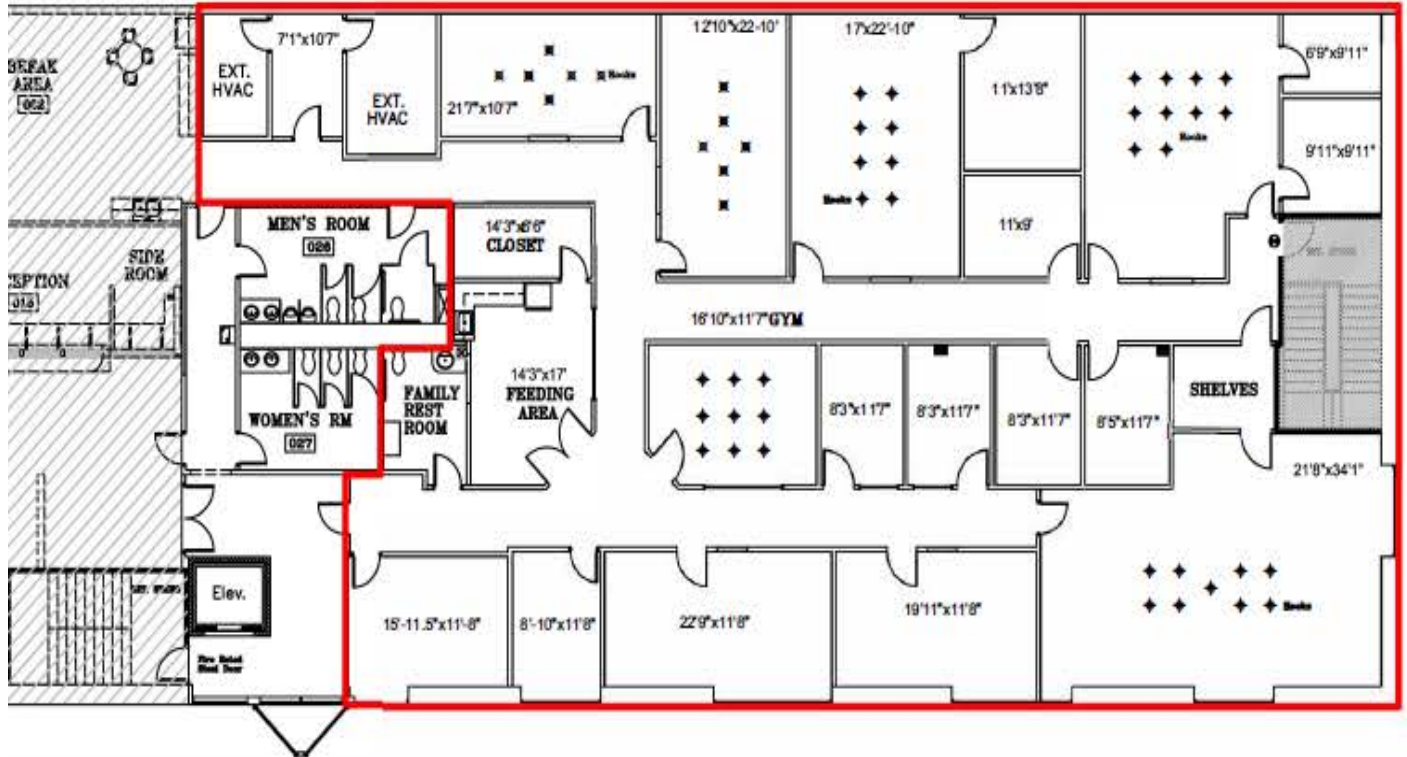
Cushman & Wakefield Copyright 2016. No warranty or representation, express or implied, is made to the accuracy or completeness of the information contained herein, and same is submitted subject to errors, omissions, change of price, rental or other conditions, withdrawal without notice, and to any special listing conditions imposed by the property owner(s). As applicable, we make no representation as to the condition of the property (or properties) in question.



**CUSHMAN &
WAKEFIELD**

OFFICE SPACE AVAILABLE

**7001 LOISDALE ROAD
SPRINGFIELD, VIRGINIA**



Potential Lease Space / 6,419 sq. ft. / Outlined in Red

For more information, please contact:

Jon Lawrence

Executive Director

703-847-2787

Jon.Lawrence@cushwake.com

Ed Zaptin

Senior Director

703-847-2730

Ed.Zaptin@cushwake.com

CUSHMAN & WAKEFIELD OF VIRGINIA

1800 Tysons Boulevard | Suite 200

Tysons Corner | VA 22102

www.cushmanwakefield.com

Cushman & Wakefield Copyright 2016. No warranty or representation, express or implied, is made to the accuracy or completeness of the information contained herein, and same is submitted subject to errors, omissions, change of price, rental or other conditions, withdrawal without notice, and to any special listing conditions imposed by the property owner(s). As applicable, we make no representation as to the condition of the property (or properties) in question.