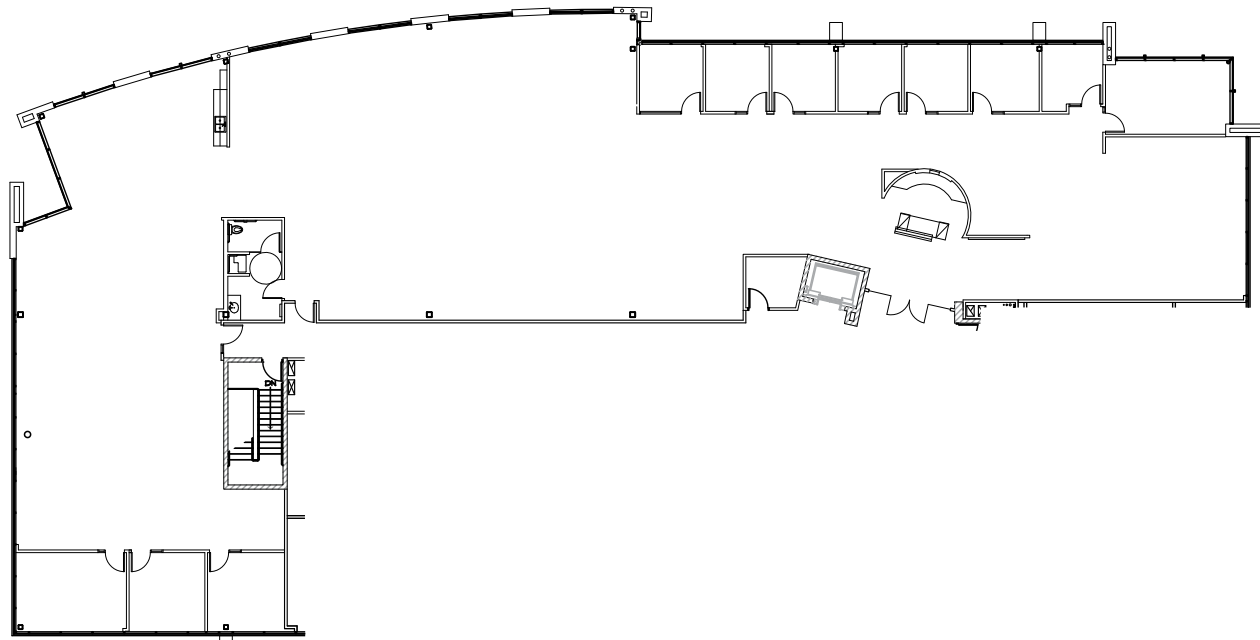
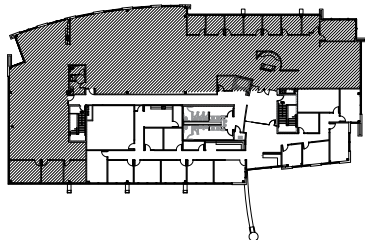


# Suite 310 - 11,476 SF

225 E GERMANN ROAD



225, 275 & 335 East Germann Road ♦ Gilbert, AZ 85297



Smaller floor plates available allowing smaller tenants prominent exposure to corridors, lobbies and expansive window lines.



**NEWMARK**



**Mike Garlick**  
Executive Managing Director  
t 602-284-2070  
mike.garlick@nmrk.com

**Patrick Devine**  
Senior Managing Director  
t 602-697-2001  
patrick.devine@nmrk.com

2555 East Camelback Road, Suite 600, Phoenix, Arizona 85016  
t 602-952-3800 | f 602-952-3801 | nmrk.com

Procuring broker shall only be entitled to a commission, calculated in accordance with the rates approved by our principal only if such procuring broker executes a brokerage agreement acceptable to us and our principal and the conditions as set forth in the brokerage agreement are fully and unconditionally satisfied. Although all information furnished regarding property for sale, rental, or financing is from sources deemed reliable, such information has not been verified and no express representation is made nor is any to be implied as to the accuracy thereof and it is submitted subject to errors, omissions, change of price, rental or other conditions, prior sale, lease or financing, or withdrawal without notice and to any special conditions imposed by our principal.