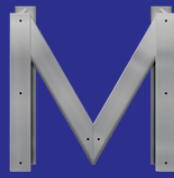


MERCER
COMMERCIAL

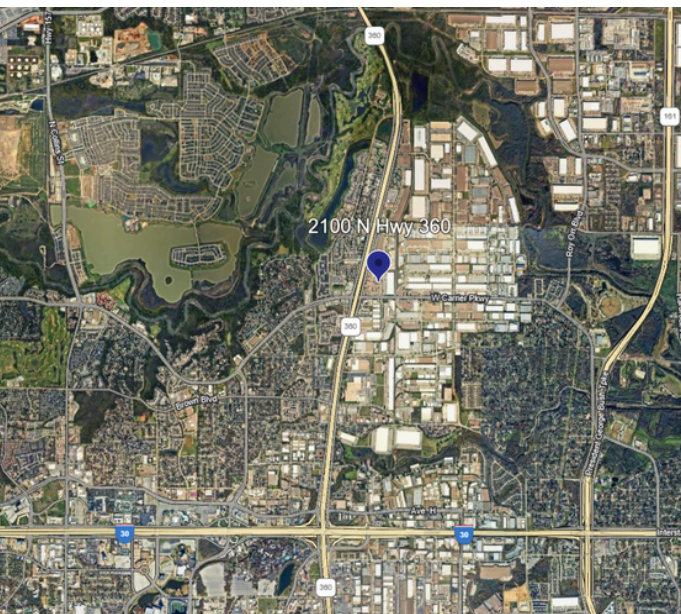


COMPANY
REAL ESTATE

FOR LEASE

AVAILABLE: 1,055 SF

2100 N HWY 360 #1202, GRAND PRAIRIE, TX 75050



PROPERTY FEATURES

- Office SF: 1,055
- Full Office
- 360 Frontage

NICK FULTON

Market Director

(469) 616-8783

nfulton@mercerc-company.com

CORBY HODGKISS, SIOR

Executive Vice President

(469) 360-3918

chodgkiss@mercerc-company.com

Mercer Company
2461 N Stemmons Fwy, Dallas, TX 75207

mercerc-company.com