

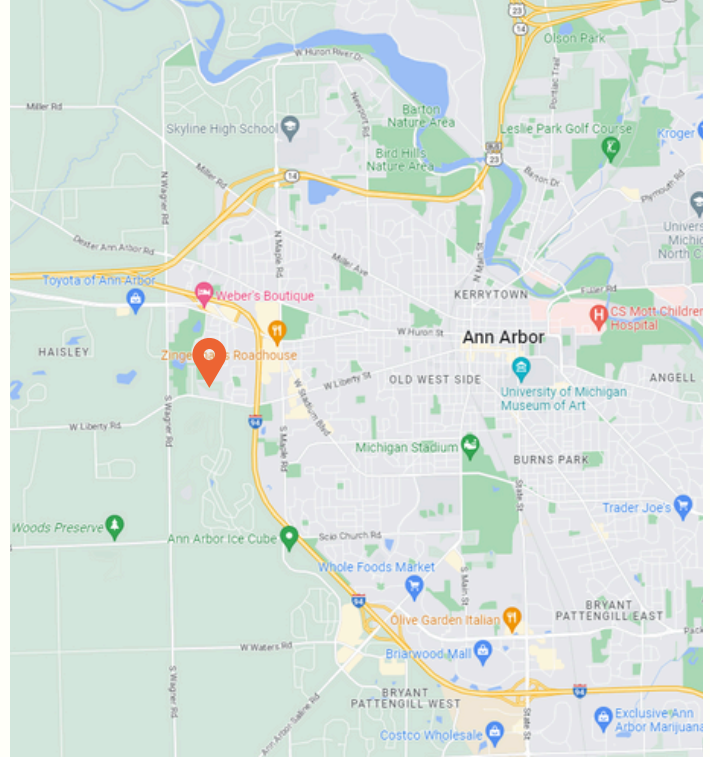


COMMERCIAL  
real property, real value.

# 3200 W Liberty Rd.

Ann Arbor, MI 48103

## Office for Lease // Executive Summary



### OFFERING SUMMARY

- LEASE RATE:** \$21 (MG)
- BUILDING SIZE:** 18,000 SF
- AVAILABLE SF:** 680 SF
- ZONING:** O - OFFICE
- PARKING:** 130/7.2 RATIO

### LOCATION OVERVIEW

This two-story, multiple tenant medical office building provides ample parking, quiet setting and is convenient to Westgate and Maple Shopping Centers, downtown Ann Arbor, US 94, and M14.

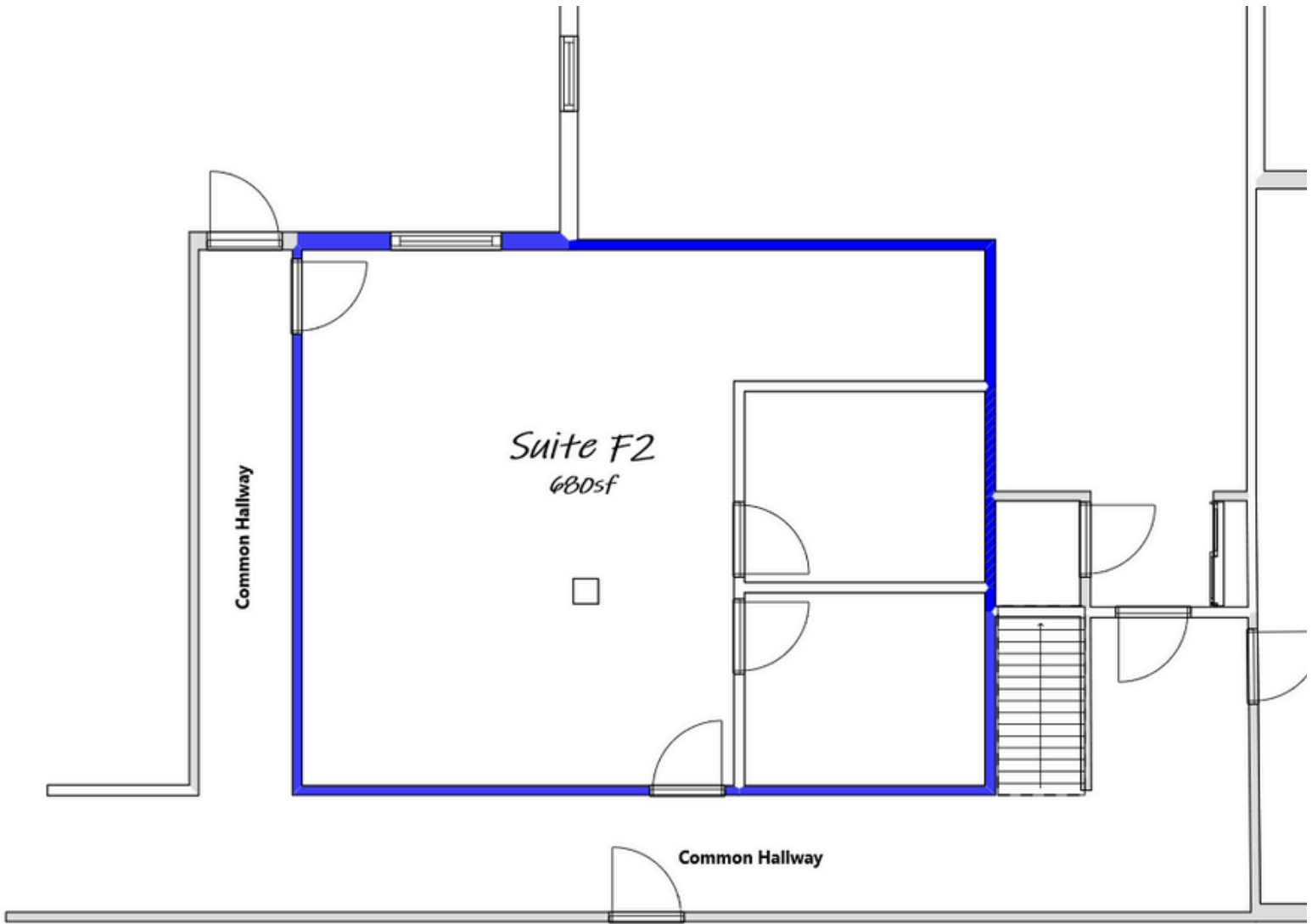
### FOR LEASE

SPACES	RATE	SIZE
SUITE F2	\$21.0 (MG)	680 SF

# 3200 W Liberty Rd.

Ann Arbor, MI 48103

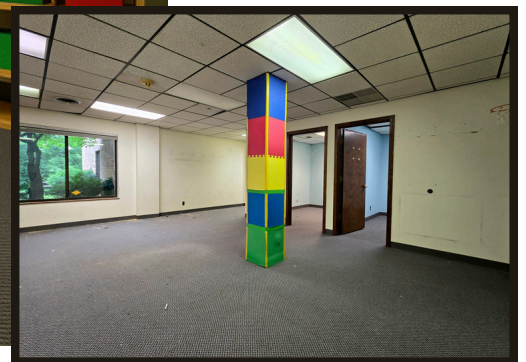
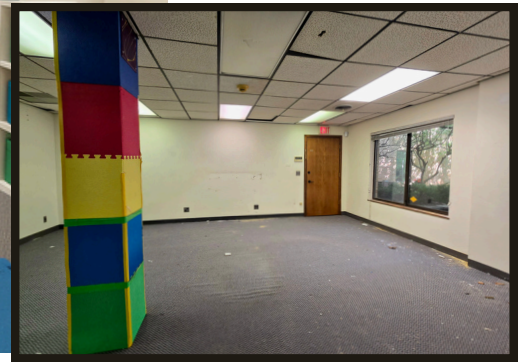
Office for Lease // Suite F2 Floorplan



3200 W. Liberty Rd.

Ann Arbor, MI 48103

Virtual Renderings – Conceptual Use Ideas // Suite F2



3200 W. Liberty Rd.

Ann Arbor, MI 48103

Office for Lease // Broker



**TYLER BURGOON**

Broker / Operations Director

tyler@jpcommercialre.com  
office 734 994 8800  
cell 734 730 5633



JP COMMERCIAL REAL ESTATE (JPCRE) DOES NOT MAKE ANY REPRESENTATIONS OR WARRANTIES, EXPRESS OR IMPLIED, AS TO THE ACCURACY OR COMPLETENESS OF THE INFORMATION CONTAINED HEREIN, AND NOTHING CONTAINED HEREIN IS OR SHALL BE RELIED UPON AS A PROMISE OR REPRESENTATION AS TO THE FUTURE REPRESENTATION OF THE PROPERTY. THIS MAY INCLUDE CERTAIN STATEMENTS AND ESTIMATES WITH RESPECT TO THE PROPERTY. JPCRE DISCLAIMS ANY AND ALL LIABILITY FOR REPRESENTATIONS OR WARRANTIES, EXPRESSED OR IMPLIED, CONTAINED IN OR OMITTED INFORMATION. THE INFORMATION CONTAINED HEREIN IS SUBJECT TO CHANGE WITHOUT NOTICE AND THE RECIPIENT OF THESE MATERIALS SHALL NOT LOOK TO JPCRE OR THE JPCRE ADVISOR NOR ANY OF THEIR OFFICERS, EMPLOYEES, REPRESENTATIVES, INDEPENDENT CONTRACTORS OR AFFILIATES, FOR THE ACCURACY OR COMPLETENESS THEREOF.

