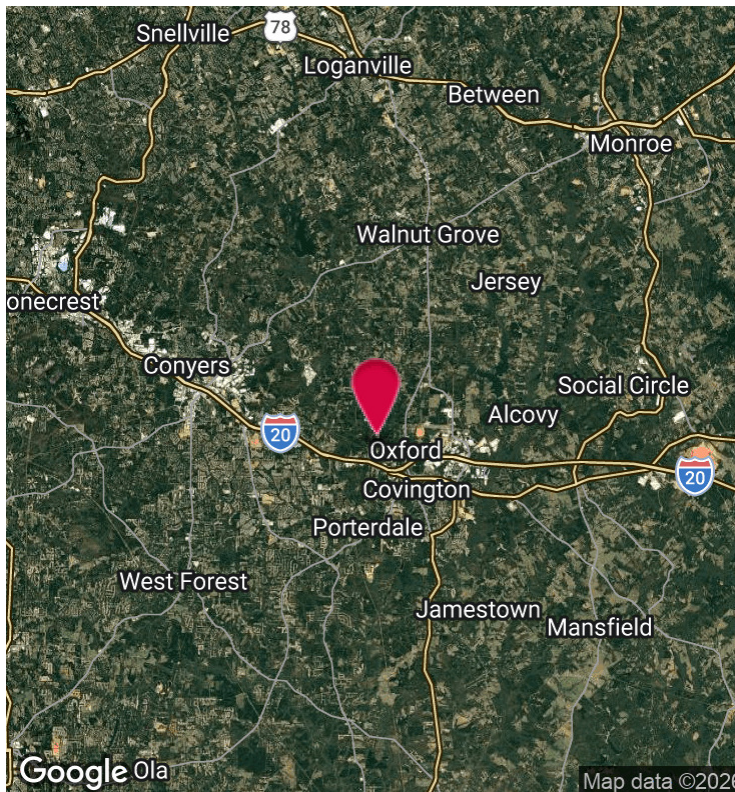


91117 EAST METRO PARKWAY

COVINGTON, GA 30014

INDUSTRIAL PROPERTY FOR LEASE



PROPERTY HIGHLIGHTS

- 5,000± Total SF Warehouse Building
- 16' Clear Height
- 4 Drive-In Doors
- 1 Dock High Door
- Double Frontage
- Front Load Building
- 1 Restroom
- Industrial Zoning

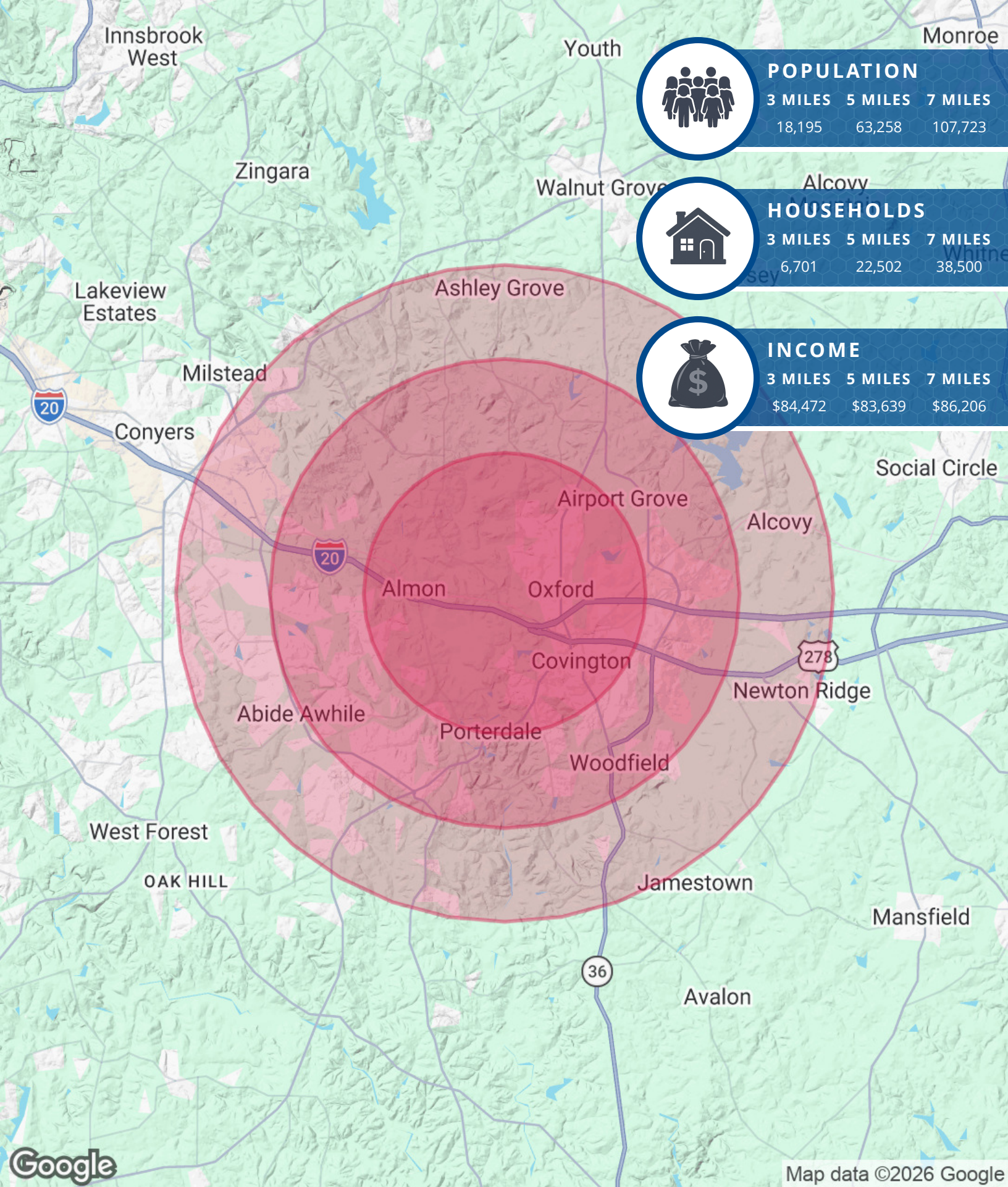
Tim Staples
Associate Broker
tstaples@kingindustrial.com
770.317.5330



Industrial • Commercial • Investment



Tim Staples
Associate Broker
tstaples@kingindustrial.com
770.317.5330



POPULATION

3 MILES	5 MILES	7 MILES
18,195	63,258	107,723



HOUSEHOLDS

3 MILES	5 MILES	7 MILES
6,701	22,502	38,500



INCOME

3 MILES	5 MILES	7 MILES
\$84,472	\$83,639	\$86,206

Google

Map data ©2026 Google

Tim Staples
 Associate Broker
 tstaples@kingindustrial.com
 770.317.5330

King Industrial Realty, Inc. **CORFAC** INTERNATIONAL
 Industrial • Commercial • Investment

91117 East Metro Parkway, Covington, GA 30014

Exclusively Listed By:

Tim Staples

Associate Broker

tstaples@kingindustrial.com

770.317.5330



King Industrial
Realty, Inc.

CORFAC
INTERNATIONAL

Industrial • Commercial • Investment