

240 West 35TH

Large Block Available
10,000 - 40,000 SF

Located in the heart of the Penn District

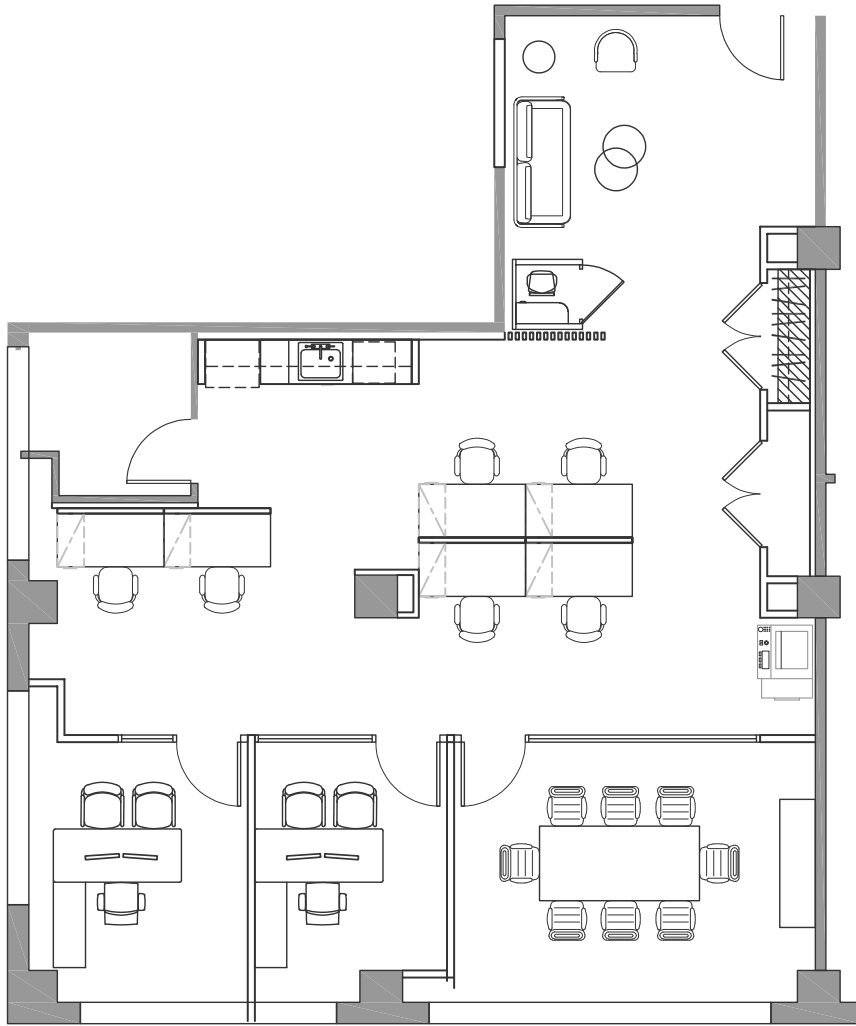


Amazon (1 block away)

BUILDING HIGHLIGHTS

- ◆ *Attended Lobby 7:00am-11:00 pm*
- ◆ *24/7/365 access*
- ◆ *Dedicated, tenant-controlled AC*
- ◆ *Recently renovated entrance and lobby, building systems, facade and common corridors*
- ◆ *Operable windows*
- ◆ *3 passenger elevators with new mechanicals*
- ◆ *1 freight elevator*
- ◆ *Renovated bathrooms*
- ◆ *Institutional ownership*
- ◆ *NBI's are available for all full floors*





SUITE 404 – 2,239 RSF

- ◆ *NEW prebuilt pantry*
- ◆ *2 offices with glass fronts*
- ◆ *1 conference room*
- ◆ *6 workstations*
- ◆ *Pantry*
- ◆ **Can be delivered furnished**



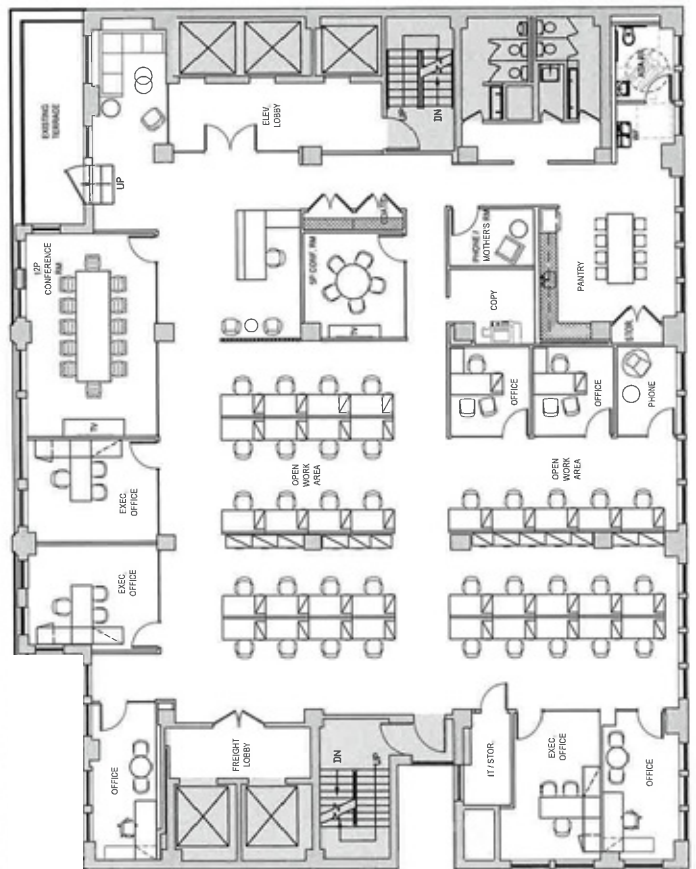


11th Floor

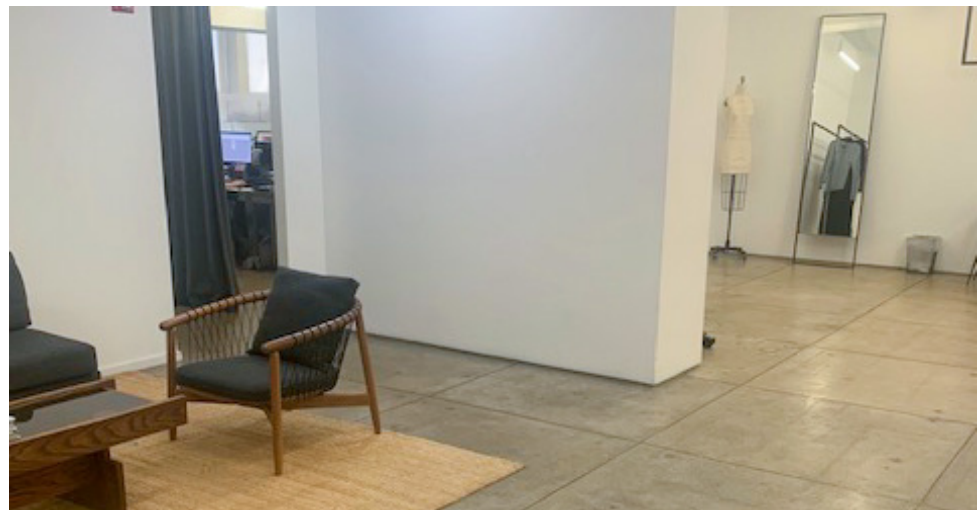
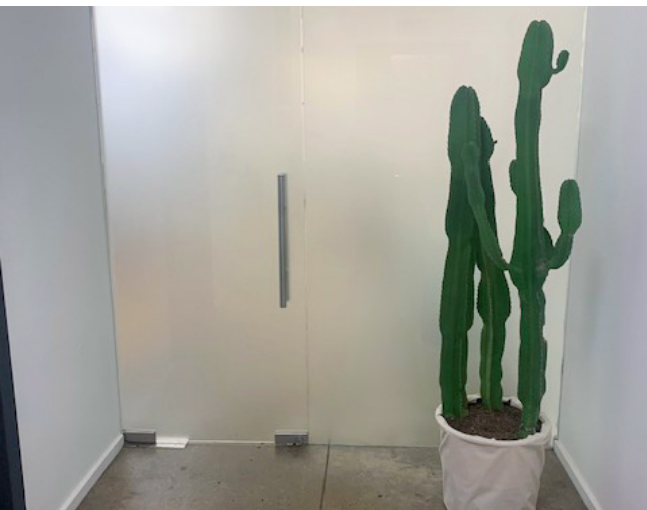
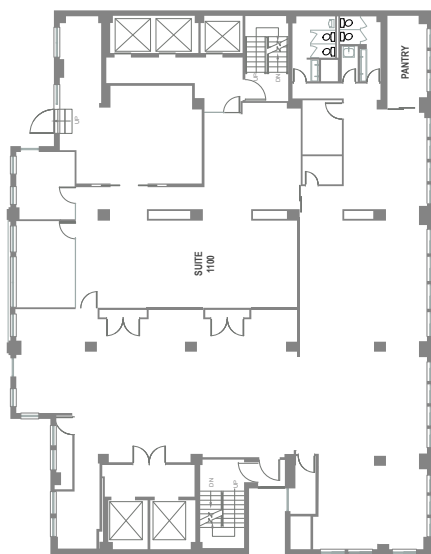
ENTIRE 11TH FLOOR – 8,982 RSF

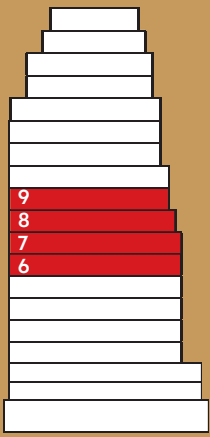
- ◆ Previous fashion showroom
- ◆ Exposed ceilings and concrete floors
- ◆ Full floor with Southern and Northern exposures
- ◆ Private bathrooms
- ◆ Wet pantry
- ◆ Two offices
- ◆ Usable terrace

proposed office layout



existing condition plan

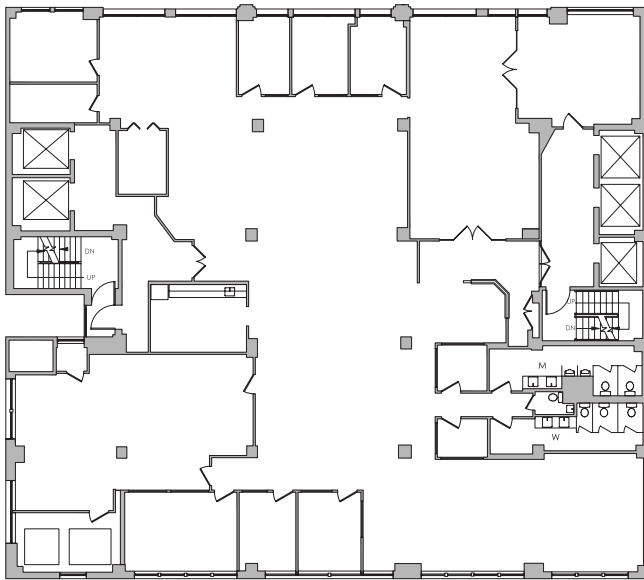




Building-within-a-Building

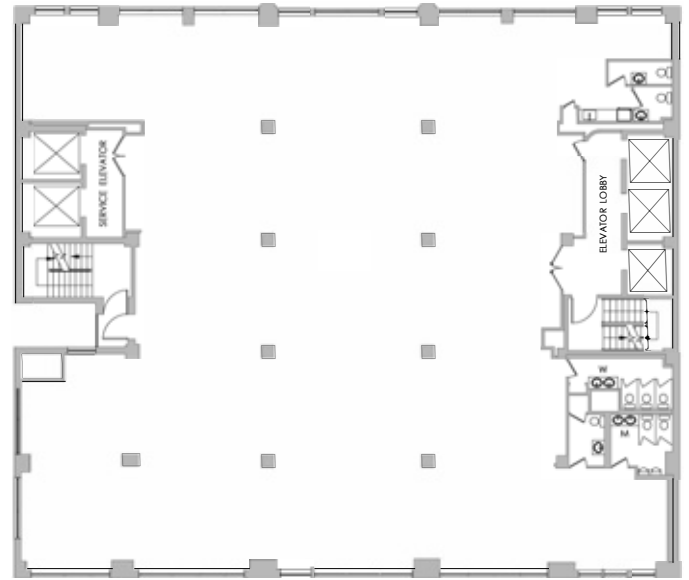
Up to **42,800** rsf of contiguous space

6th - 9th floors with dedicated elevator potential



ENTIRE 6TH FLOOR – 11,070 RSF

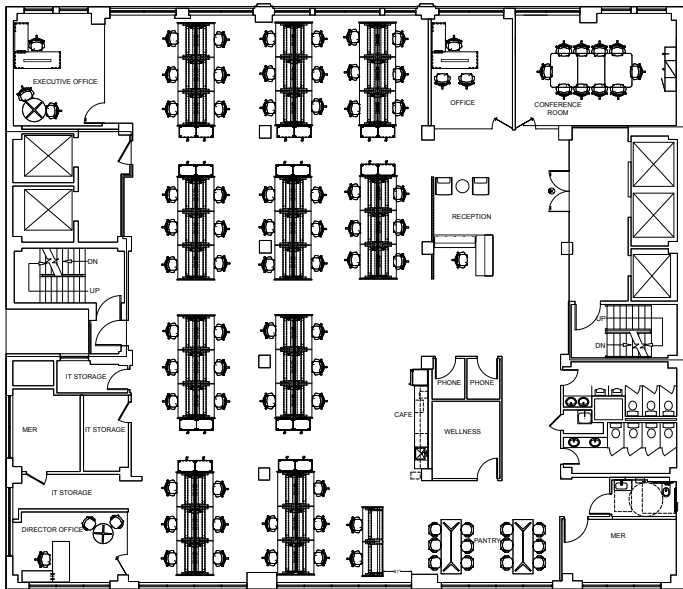
- ◆ 8 offices
- ◆ 2 conference rooms
- ◆ Large bullpen
- ◆ Eat-in pantry



ENTIRE 7TH FLOOR – 10,676 RSF

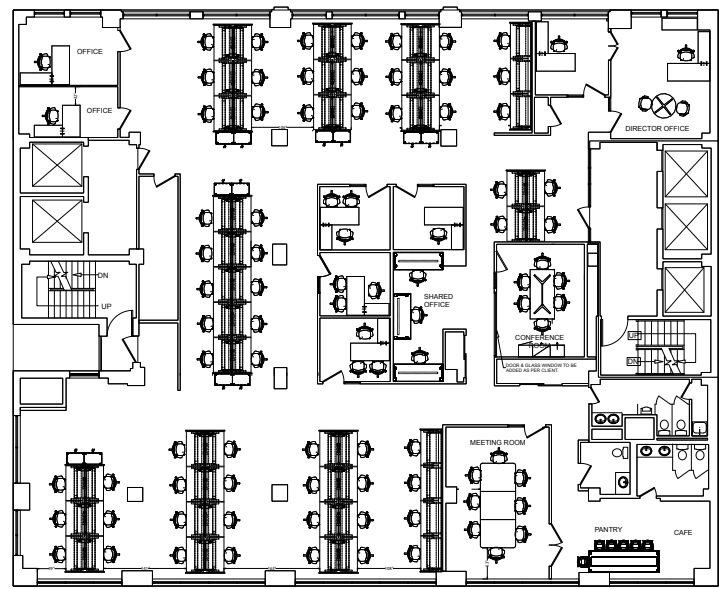
- ◆ Landlord will build to suit
- ◆ Private bathrooms (including 1 ADA)





ENTIRE 8TH FLOOR – 10,969 RSF

- ◆ New prebuilt
- ◆ 4 conference rooms with glass fronts
- ◆ Large bullpen
- ◆ Café style pantry
- ◆ Private bathrooms (including 1 ADA)
- ◆ Wellness room



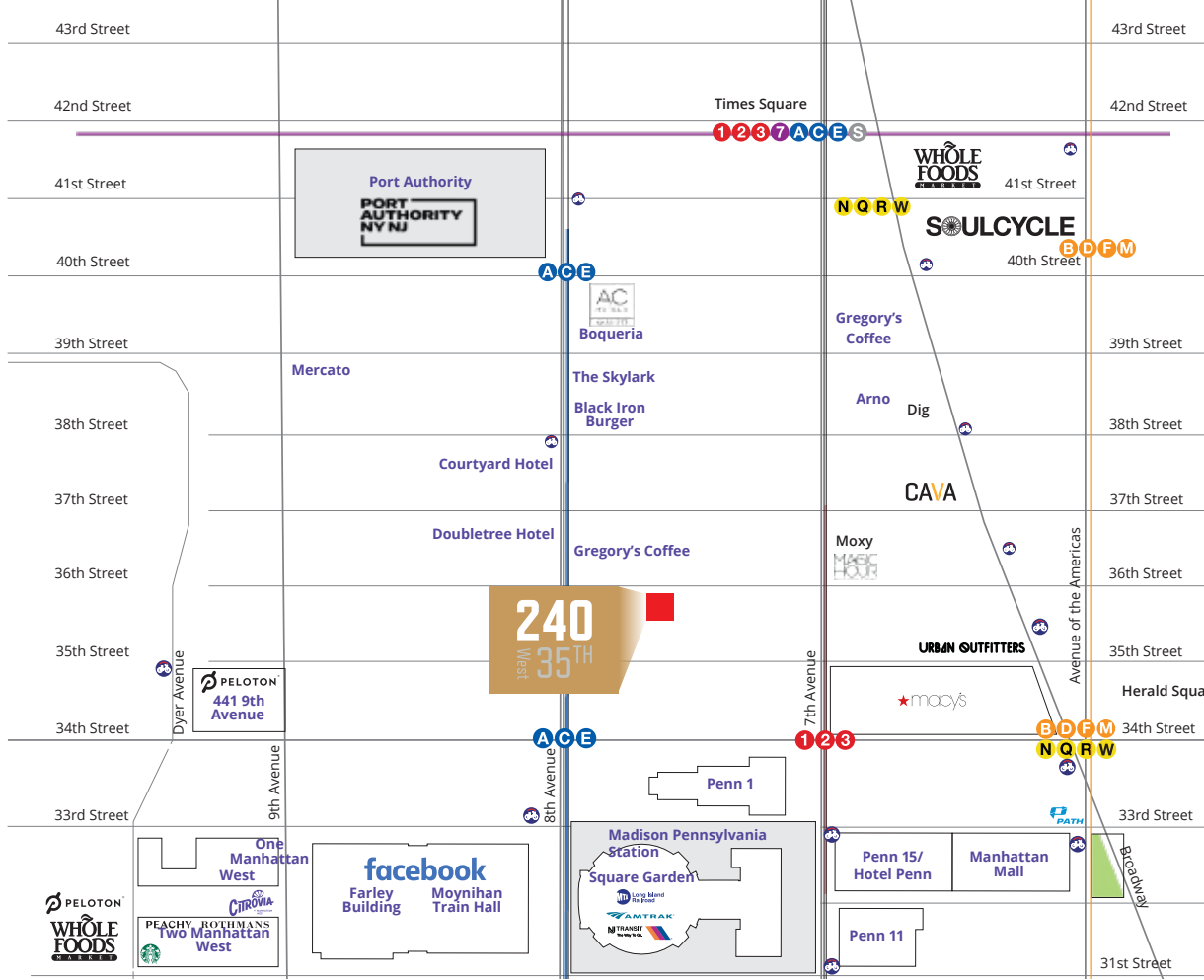
ENTIRE 9TH FLOOR – 10,100 RSF

- ◆ 8 offices
- ◆ 1 Conference room
- ◆ Large open area
- ◆ Eat-in pantry
- ◆ Private bathrooms



35TH STREET | FOOD & BEVERAGE ESTABLISHMENTS





NEIGHBORHOOD HIGHLIGHTS

- ◆ Centrally located between Penn Station and Port Authority and steps from The Moynihan Train Hall, Hudson Yards and Herald Square
- ◆ Neighbors include: Facebook, Amazon, Macy's, Peloton, Whole Foods, Shops at Manhattan West, Starbucks, Best Bagels, Planet Fitness and Staples
- ◆ Near the following:



FURNITURE CAN BE MADE AVAILABLE UPON REQUEST

For more information, please contact:

Todd Korren

Executive Managing Director | Principal
D: 212 776 1283 | M: 516 815 7496
tkorren@lee-associates.com

Woody King

Senior Managing Director
D: 212 776 4352
wking@lee-associates.com

Noah Caspi

Associate
D: 212 776 1210
ncaspi@lee-associates.com

All information supplied is from sources deemed reliable and is furnished subject to errors, omissions, modifications, removal of the listing for sale or lease, and to any listing conditions, including the rates and manner of payment of commissions for particular offerings imposed by principals or agreed by this Company, the terms of which are available to principals or duly licensed brokers. Any square footage dimensions set forth are approximate.

