

FOR LEASE

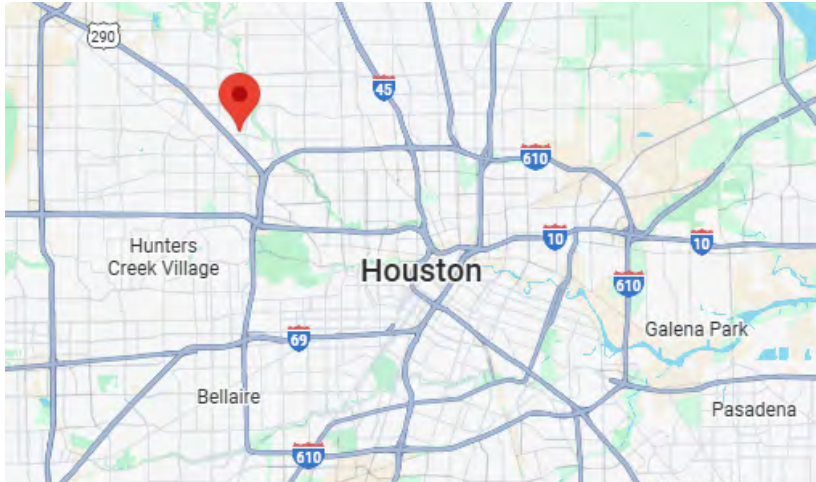
MILWEE BUSINESS Park
4901 Milwee St., Suite 204
Houston, TX 77092



[Click Here
for
Virtual Tour](#)

FOR LEASE

MILWEE BUSINESS Park
4901 Milwee St., Suite 204
Houston, TX 77092



Property Size:

- 2,000 SF Total
- 575 SF Office

Property Features:

- Master Planned Business Park
- (1) Grade Level Door
- 10' Clear Height
- Security Lighting
- All Concrete Paving
- HVAC in Warehouse
- Fully Fenced with Security Gate

Property Location:

- Easy Access to I-10, 610 Loop + 290

Leasing By:



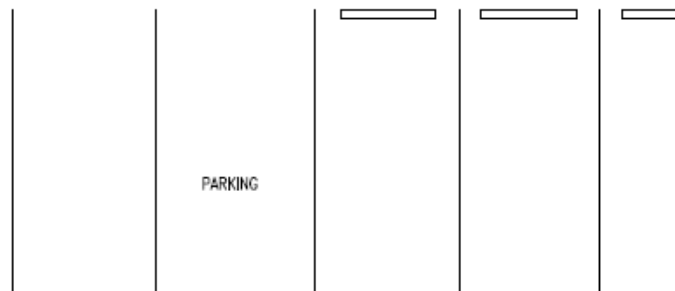
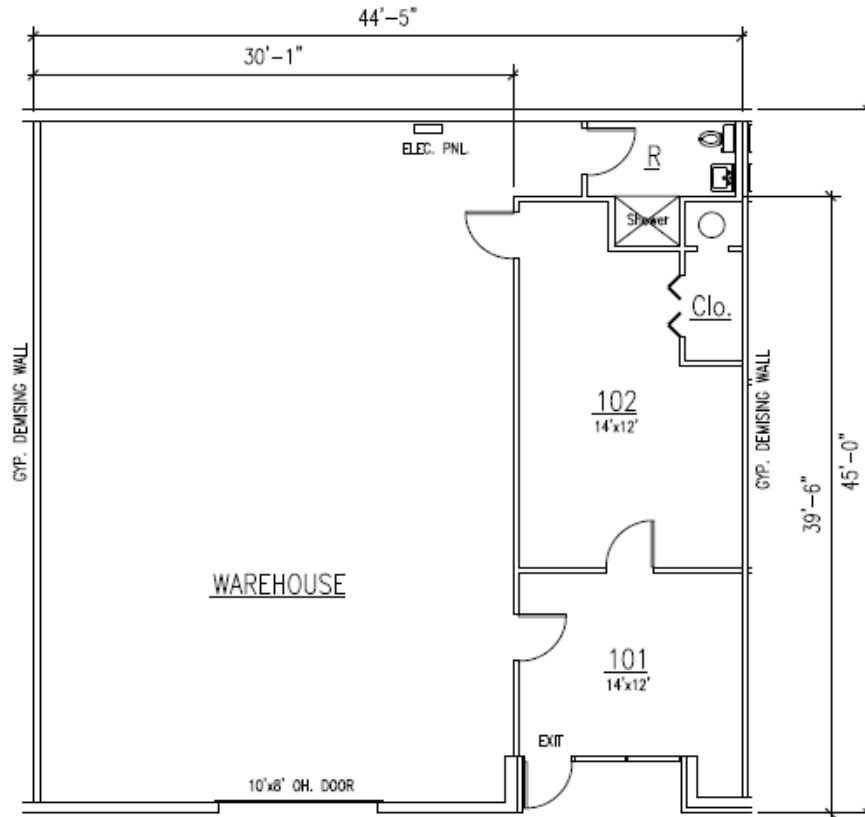
J.D. Dieckman
Hanson Bane
(713) 589-3353

Owned + Managed by:

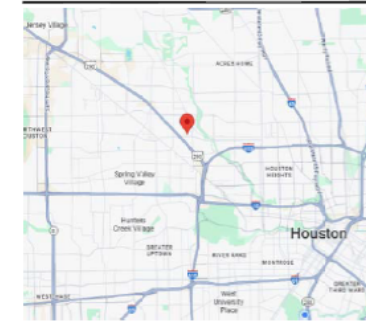


FOR LEASE

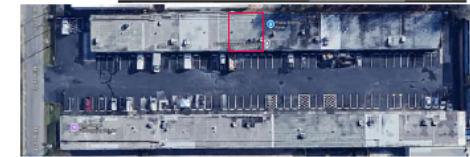
MILWEE BUSINESS Park
 4901 Milwee St., Suite 204
 Houston, TX 77092



4901 MILWEE STREET #204
HOUSTON, TEXAS 77092



VICINITY MAP



SITE PLAN

BUILDING SUMMARY

OFFICE AREA :	576 SQ. FT.
WAREHOUSE :	1,426 SQ. FT.
TOTAL AREA:	2,000 SQ. FT.

BUILDING FEATURES

- CONCRETE MASONRY CONSTRUCTION
- GRADE LEVEL FRONT LOADING DOORS
- 10' CLEAR HEIGHT



Jon L, Michael
 Edward Bane

Phone: 832 942 7731
 www.bridgecommercialre.com

6750 West Loop South,
 Suite 330
 Bellaire, Texas 77401