

SUITE 175 – W | 2,140 SF

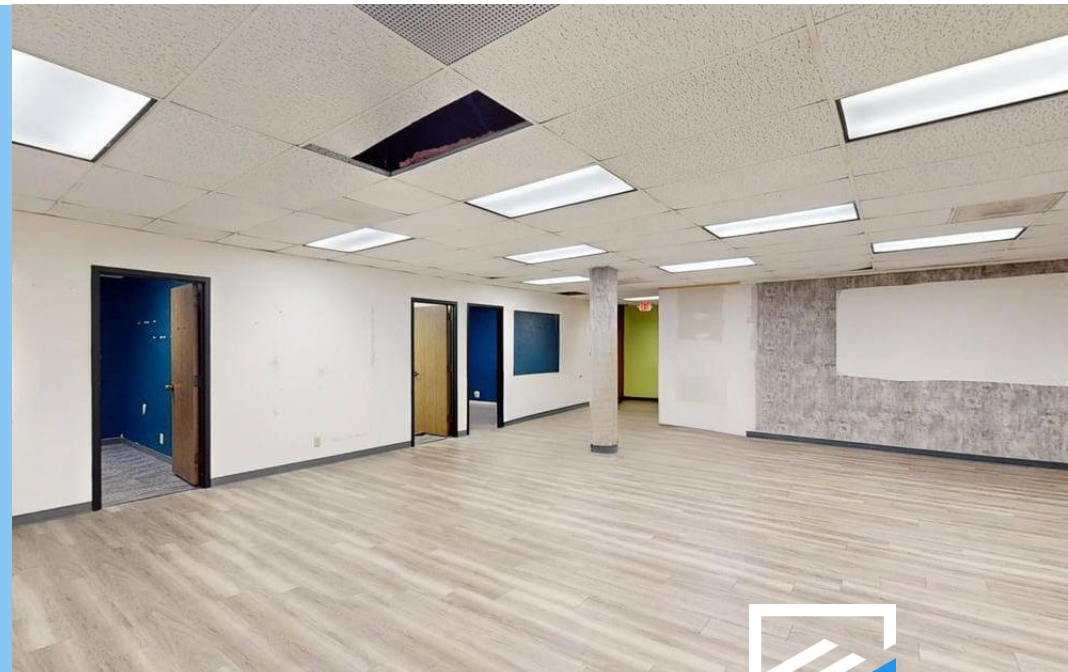
Located at 6800 Park Ten Blvd, Suite 175-West in San Antonio, TX, this 2,140 SF office suite offers a flexible single-story layout ideal for a variety of professional uses. The suite features a spacious open work area with durable luxury vinyl plank flooring, structural columns, and large exterior windows with vertical blinds that provide abundant natural light.

A secondary enclosed workspace, accessed through a wood-paneled door framed by a bold navy accent wall, includes built-in adjustable shelving and patterned carpet tile flooring, making it ideal for storage, private office use, or organized operations. Textured stone-look accent walls, warm wood finishes, and clean white surfaces create a polished and inviting atmosphere.

The adaptable floor plan supports collaborative workspaces, private offices, and flexible operational configurations for growing businesses.

SPACE HIGHLIGHTS

- 2,140 SF Office Suite
- Open & Flexible Layout
- Large Exterior Windows
- Luxury Vinyl Flooring
- Built-In Storage Shelving
- Professional Finishes



SUITE 175 - W | 2,140 SF

