

FOR LEASE

RETAIL

5928 Pacific Ave, Stockton, CA 95207

Small Inline Retail Spaces Near Stockton's Major Shopping Centers



EXCLUSIVELY LISTED BY
NORTHGATE

NICKOLAS SALDIVAR III
Investments Partner
916.672.4112
nick.saldivar@ngcip.com
Lic #01766394



HIGHLIGHTS

- Inline retail space near the Stockton's two malls and several major retailers
- Exceptional storefront visibility from Pacific Avenue
- Just off corner from signalized intersection of Pacific Avenue and Swain Road
- Multiple entry and exit points from W Swain Road and Pacific Avenue with ample parking
- Area tenants Include: Macy's, Best Buy, BJ's Brewhouse, REI, Petco, HomeGoods, Safeway, Trader Joe's and many more

PROPERTY OVERVIEW

ADDRESS	5928 Pacific Ave, Stockton, CA 95207	
PROPERTY TYPE	Retail Multi-Tenant	
LEASE TYPE	NNN	
LEASE PRICE	Contact Broker	
AVAILABLE SPACE	Suite 5928	2,480 SF
ZONING	General Commercial (GC)	
TRAFFIC	Pacific Ave	± 27,274 ADT
	W Swain Rd	± 14,200 ADT

MARKET OVERVIEW

Lincoln Center

TRADER JOE'S **crumbl cookies**

FIRE WINGS **Jersey Mike's SUBS** **Chevron** **85°C Daily Coffee**

STARBUCKS **SAFEGWAY**

jamba **MARKET TAVERN** **néktar JUICE BAR.**

847.9516.8700 STOCKTON, CA U.S.A.

RED WING SHOES **CHUCK E. CHEESE**

O'Reilly AUTO PARTS **Community HOSPICE**

Jack in the box **HOPE CHEST THRIFT STORE**

CVS pharmacy **GROCERYOUTLET Bargain Market**



SUBWAY **boost mobile**

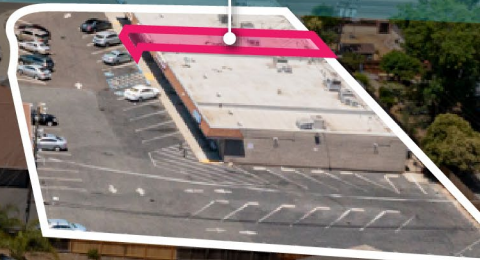
donutking. **BR BASKIN-ROBBINS**

W Swain Rd: ± 14,200 ADT



Pacific Ave: ± 27,274 ADT

SITE



MARKET OVERVIEW

BEST BUY **WEBERSTOWN MALL** **Dillard's**
The Style of Your Life.

DICK'S SPORTING GOODS **STARBUCKS** **petco**

SPROUTS FARMERS MARKET **Burlington** **five BELOW**

ULTA BEAUTY **macy's** **HomeGoods**

Panera BREAD **IN-N-OUT BURGER** **BARNES & NOBLE** **Foot Locker**

BOX LUNCH **JCPenney**

Target **Denny's** **goodwill**

CVS pharmacy **Office DEPOT** **BIG 5 SPORTING GOODS**

planet fitness **BUFFALO WILD WINGS** **Cane's**



ROSS SUPERCUTS

chili's **sleep** **number**

M/W **Tutti Frutti** **carter's**

MEN'S WEARHOUSE

SITE

W Swain Rd: ± 14,200 ADT

Pacific Ave: ± 27,274 ADT

SAN JOAQUIN DELTA COLLEGE

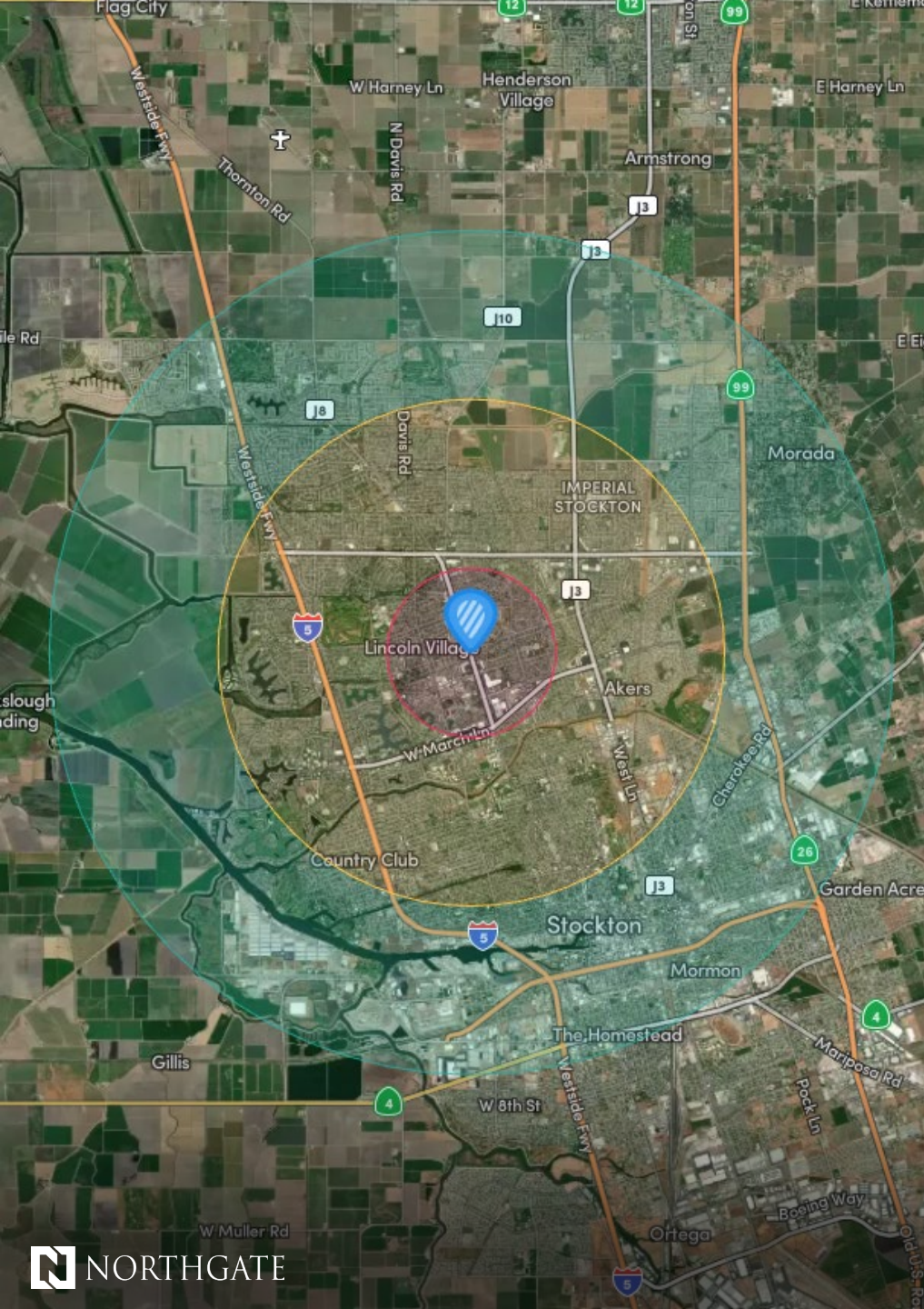
Peet's COFFEE **Bj's RESTAURANT BREWHOUSE** **FIVE GUYS BURGERS and FRIES** **MATTRESS FIRM**

De Vito Brothers Italian Cuisine **NICK THE GREEK SOUTHLAKE & GYRO HOUSE**

AERIAL VIEW



W Swain Rd: ± 14,200 ADT

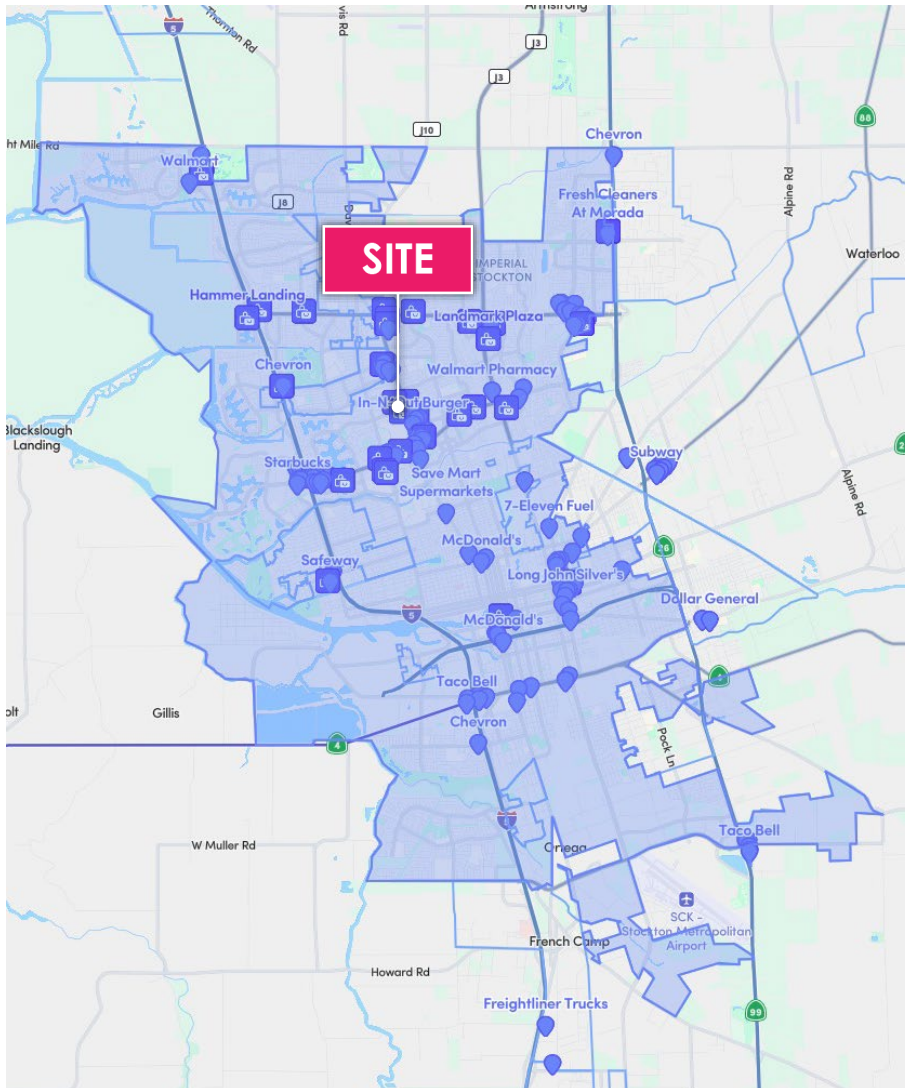




DEMOGRAPHICS - 2026

	1 MILE	3 MILES	5 MILES
Population	20,280	185,194	297,069
Projected Population (5 Yr)	20,578	189,914	306,433
Average Age	38	38	37
Households	7,317	61,380	95,080
White Population	4,841	41,916	64,296
Black Population	3,440	24,647	35,262
Am Indian Population	536	3,362	5,770
Asian Population	3,173	44,921	70,254
Other Population	8,290	70,348	121,487
Hispanic Population	48.78%	44.45%	47.91%
Average HH Income	\$87.1k	\$96.8k	\$97.5k
High School Graduates	11,060	97,821	149,146
College Graduates	3,931	35,423	54,122
Total Employees	8,677	76,381	124,049

-  Retail
-  Shopping Center



Strategic Inland Hub

Located in California's Central Valley, Stockton is a key inland port city with strong transportation links and a growing industrial base, making it ideal for logistics, manufacturing, and distribution.

Diverse Economic Base

Stockton's economy is fueled by sectors such as healthcare, education, agriculture, and warehousing, creating stable employment opportunities and drawing long-term business investment.

Higher Education Access

Home to the University of the Pacific and several community colleges, Stockton offers a strong educational foundation and workforce development for the regional economy.

Waterfront & Outdoor Lifestyle

With the scenic Stockton Delta Waterways, the city offers boating, fishing, parks, and trails, supporting a dynamic mix of urban living and outdoor recreation.

Connected Transportation Network

Situated along I-5 and Highway 99 with access to rail and the Port of Stockton, the city is well-positioned for regional and statewide connectivity.

Cultural Assets & Events

Stockton features a vibrant arts scene, local festivals, historic downtown venues, and attractions like the Haggin Museum and Stockton Arena, reflecting a diverse and active community.



Investment Sales | Leasing | Asset Management | Property Management



NICKOLAS SALDIVAR III

Investments Partner

P: 916.672.4112

nick.saldivar@ngcip.com

Lic #01766394

DRE: #01910787