

FOR SUBLEASE, COMMERCIAL KITCHEN 1224 RANKIN ST.



1224 RANKIN ST
TROY, MI 48083

PROPERTY HIGHLIGHTS:

- 4,867 SF Available For Sublease
- Immediate Occupancy
- Includes Rare 1,700 SF Commercial Kitchen Space & 1,500 SF Clean Warehouse
- Backup Generator
- Completely renovated in 2021 with rents below market
- (1) Dock Door
- Potential to expand into adjacent unit for an additional 4,840 SF with One (1) Dock Door

SUBLEASE EXPIRATION - SEPTEMBER 30, 2031

SPACE	LEASE RATE	SIZE (SF)
Suite 1224	\$9.95 SF/yr	4,867 SF

The information provided herein along with any attachment(s) was obtained from sources believed to be reliable, however, Friedman Real Estate makes no guarantees, warranties, or representations as to the completeness or accuracy of such information and legal counsel is advised. All information provided is subject to verification and no liability for reliance on such information or errors or omissions is assumed. The presentation of this property is submitted subject to errors, omissions, change of price or conditions, prior sale or lease, or withdrawal without notice. Copyright © 2026 Friedman Real Estate. All rights reserved.

FOR MORE INFORMATION PLEASE CONTACT:



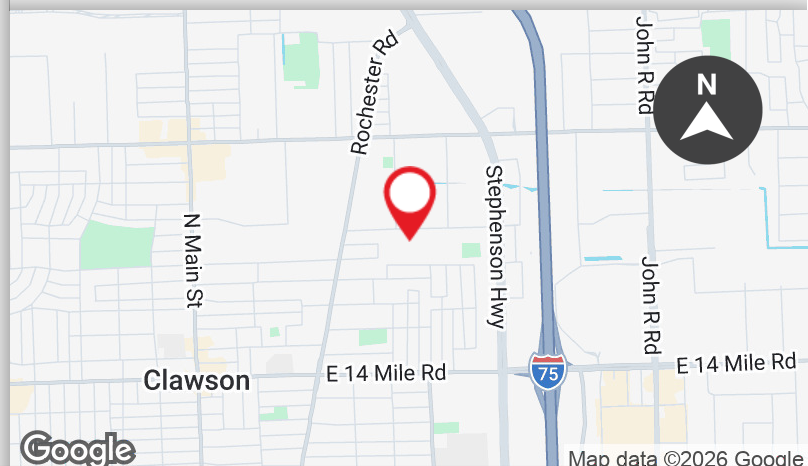
CHARLIE ELIAS
Associate, Brokerage Services
charlie.elias@freg.com



ZACH CUMMINGS
Senior Associate, Brokerage Services
zach.cummings@freg.com

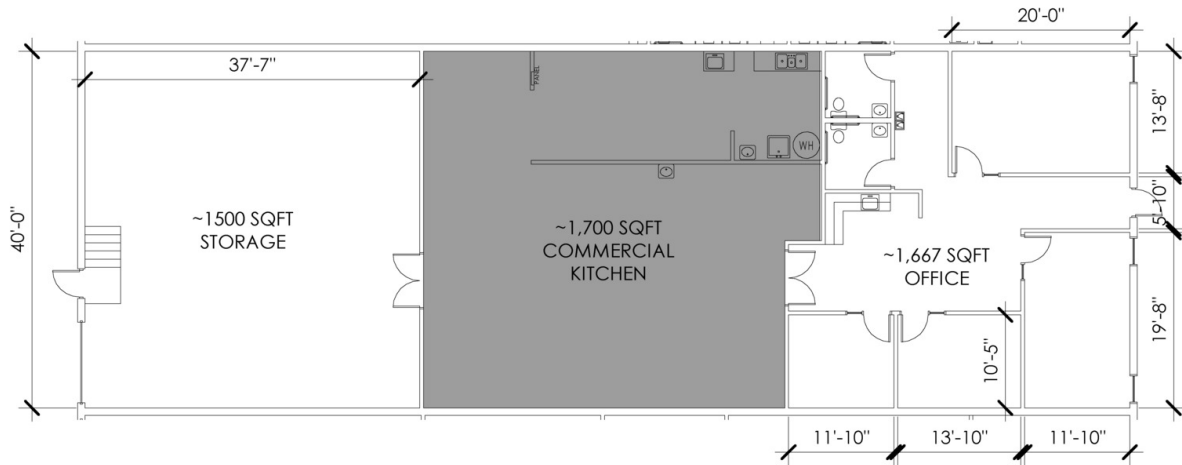
248.848.4117

eCODE 023



1224 RANKIN ST. - SUBLEASE
SUITE PLAN

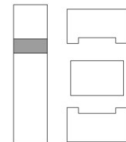
REQUIRES FIELD VERIFICATION



6/5/2026 2:38:41 PM



SCALE: 1/16" = 1'-0"



1224 RANKIN ST. - SUBLEASE
PROPERTY PHOTOS



1224 RANKIN ST. - SUBLEASE
PROPERTY PHOTOS

