

FOR LEASE

# W 34th Business Park

5845-5891 W 34th Street, Houston, Texas 77092



Tanner Thompson  
+1 832 589 6659  
tanner.thompson@kbcadvisors.com

Jim Autenreith, SIOR  
+1 713 922 0829  
jim.autenreith@kbcadvisors.com

KBC Advisors | Houston  
1233 West Loop South, Suite 1270  
Houston, TX 77027

**KBCADVISORS**

# Site Information

**22,750 SF**  
Total Available

**MINIMAL**  
Office Space

**± 16'**  
Clear Height

**NEW**  
Construction

**HIGHWAY 290**  
Easy Access



**5845 W 34TH ST**

TOTAL	± 6,500 SF
OFFICE	± 1,351 SF
RESTROOMS	2
GRADE LEVEL DOORS	2

**5851 W 34TH ST**

TOTAL	± 3,250 SF
OFFICE	± 818 SF
WAREHOUSE	±2,234 SF
GRADE LEVEL DOORS	1

**5853 W 34TH ST**

TOTAL	± 6,500 SF
OFFICE	± 1,351 SF
RESTROOMS	2
GRADE LEVEL DOORS	2

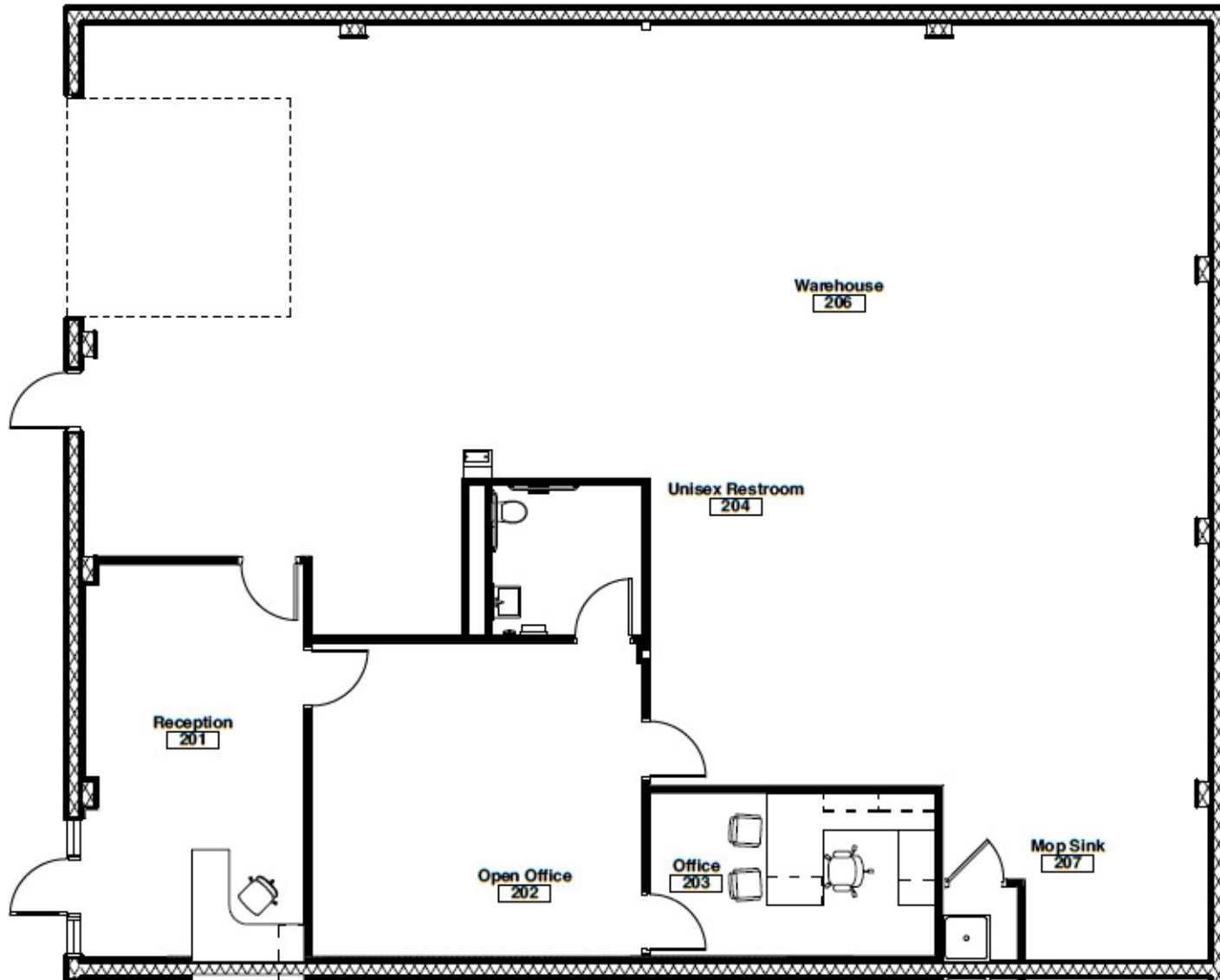
**5873 W 34TH ST**

TOTAL	± 3,250 SF
GRADE LEVEL DOORS	2

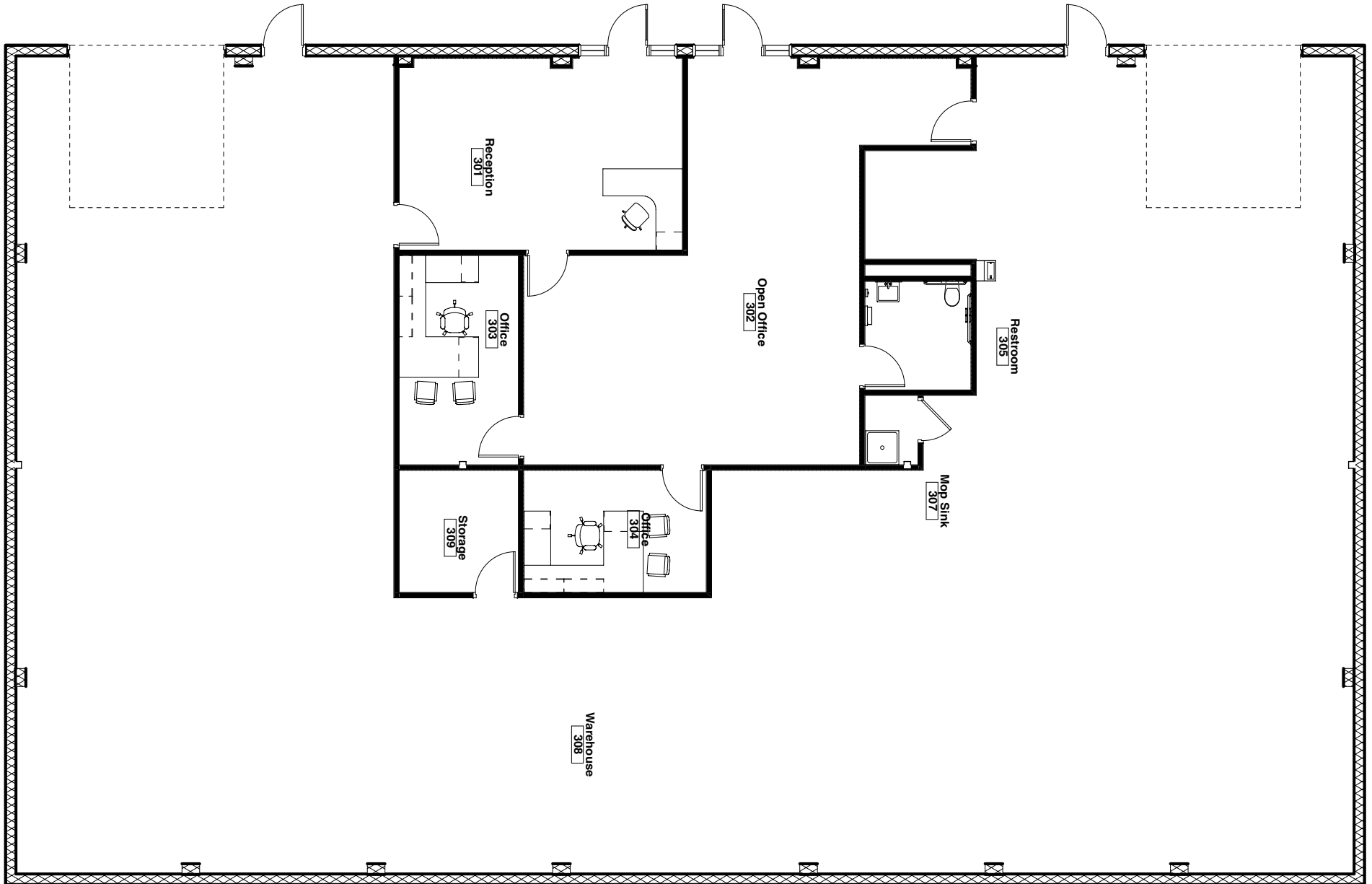
**5879 W 34TH ST**

TOTAL	± 3,250 SF
GRADE LEVEL DOORS	1

# NEW CONSTRUCTION

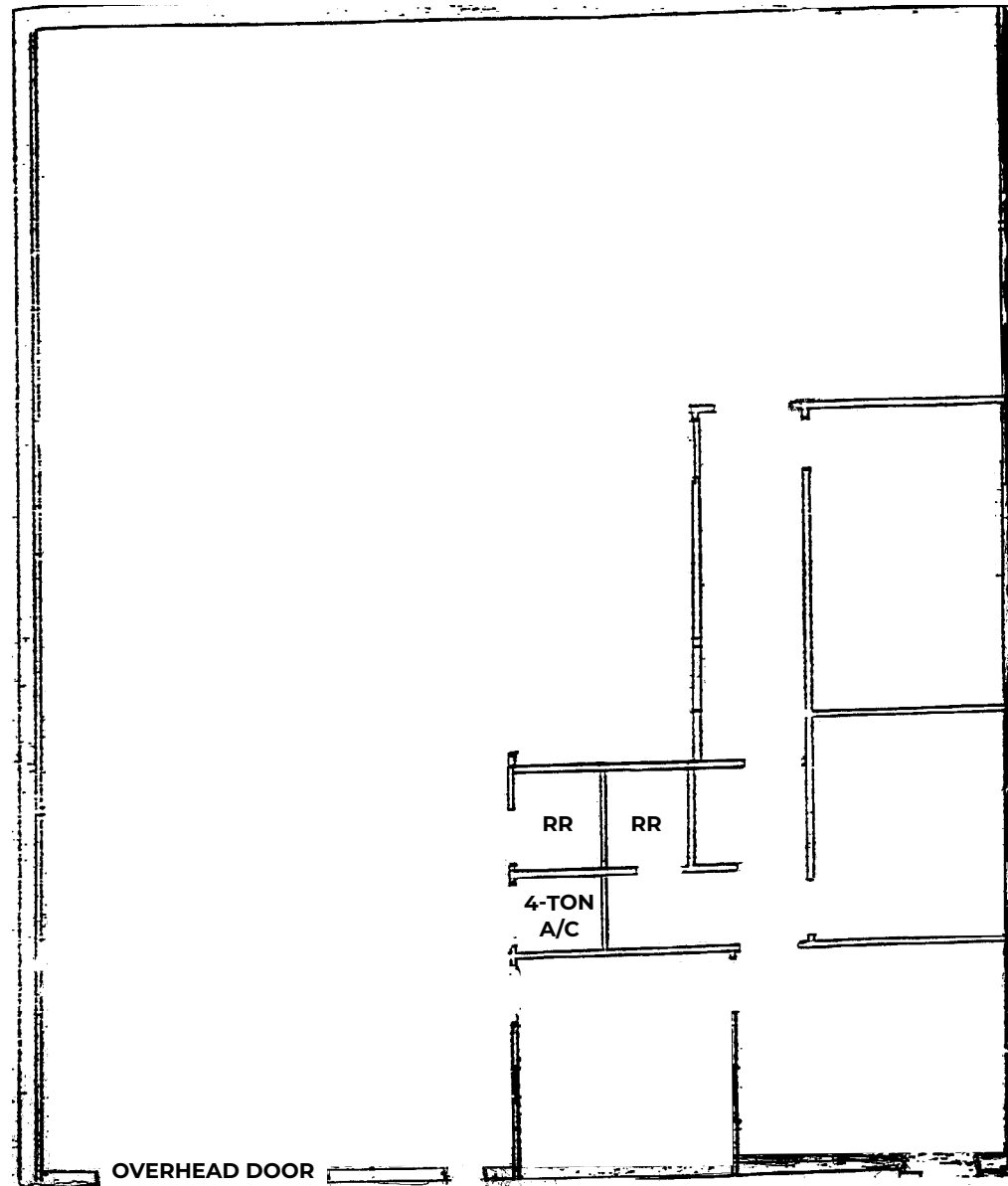


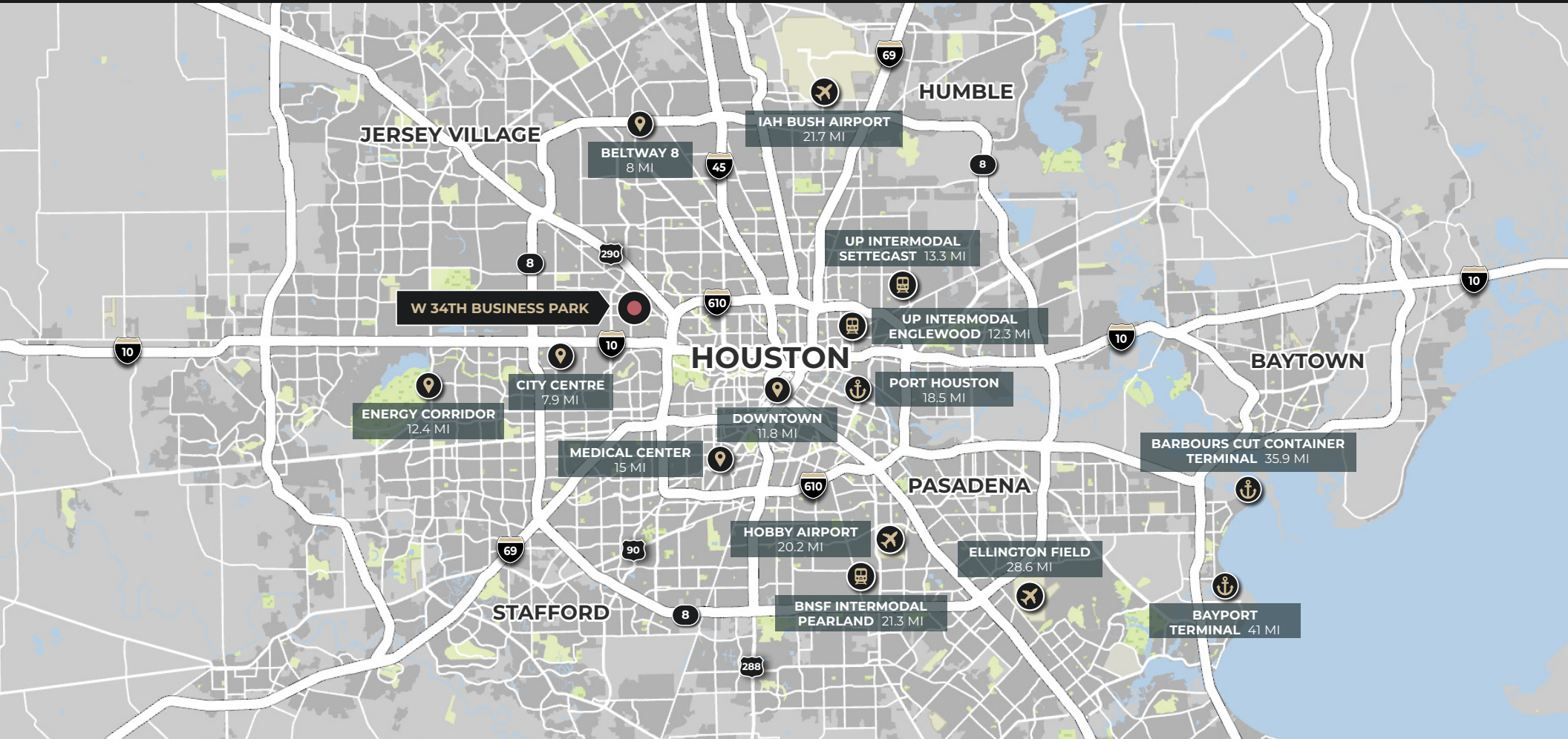
## NEW CONSTRUCTION



HOUSTON, TX

# 5873 W 34th Street Floor Plan





**Tanner Thompson**  
+1 832 589 6659  
tanner.thompson@kbcadvisors.com

**Jim Autenreith, SIOR**  
+1 713 922 0829  
jim.autenreith@kbcadvisors.com

**KBC Advisors | Houston**  
1233 West Loop South, Suite 1270  
Houston, TX 77027

© 2025 KBC ADVISORS This information has been obtained from sources believed to be reliable but has not been verified for accuracy or completeness, and KBC Advisors disclaims any guarantees, warranties or representations, express or implied, as to the completeness or accuracy as to the information contained herein. You should conduct a careful, independent investigation of the property and verify all information. Any reliance on this information is solely at your own risk. The KBC ADVISORS logo is a service mark of KBC ADVISORS. All other marks displayed on this document are the property of their respective owners. Photos herein are the property of their respective owners. Use of these images without the express written consent of the owners is prohibited.

