

FOR LEASE

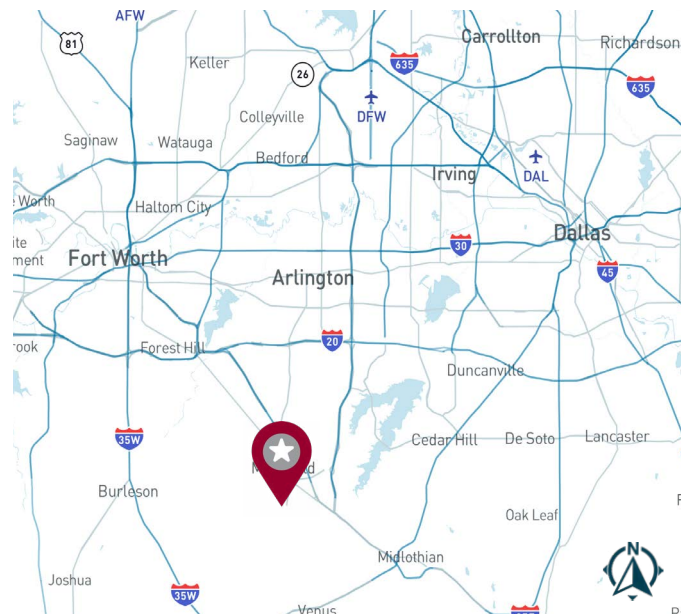
4632 County Rd 617 | Alvarado, TX 76009



617 Industrial Park

PROPERTY OVERVIEW

TOTAL PROJECT SIZE	52,000 SF
AVAILABLE SF	2,500 - 5,000 SF Suites Available
CLEAR HEIGHT	15'-16'
LOADING	Grade Level (12'x14' Doors)
PARKING	±3.5/1,000 SF
COMMENTS	<ul style="list-style-type: none">- Updated Suites That Are Move-In Ready- Very Close Access to Hwy 287 and Hwy 360- Nine (9) Building Complex Designed for Various Uses



FOR MORE INFORMATION:

JEREMY MOJICA

806.786.2263

jmojica@lee-associates.com

TAYLOR STELL

214.558.1969

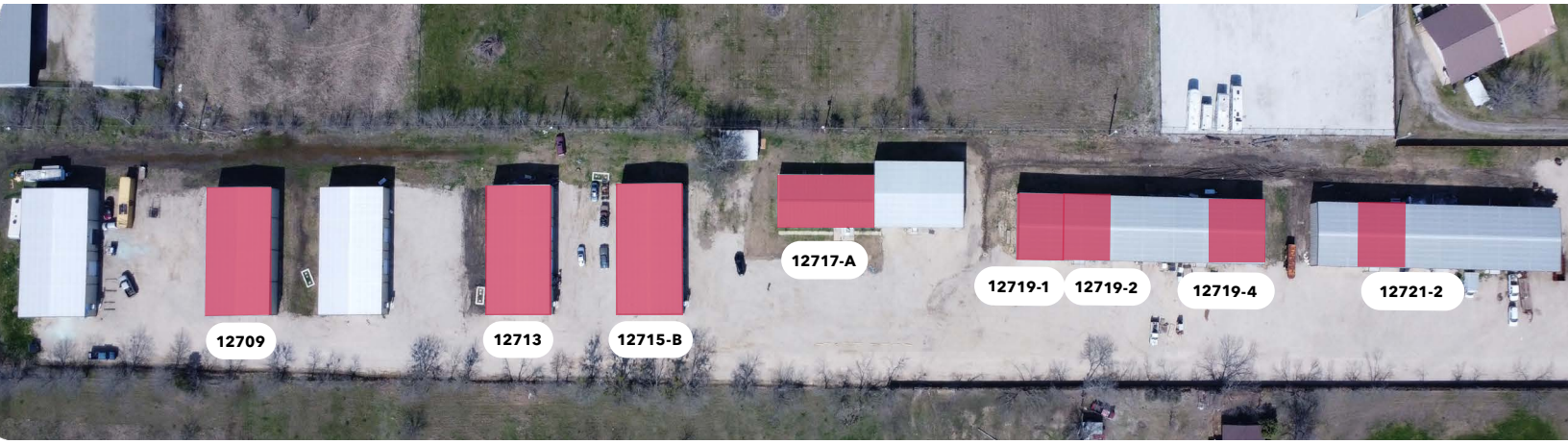
tstell@lee-associates.com

LEE & ASSOCIATES

COMMERCIAL REAL ESTATE SERVICES

leedallas.com

SUITES



SUITE 12709 (5,000 SF)

SUITE 12713 (5,000 SF)

SUITE 12715-B (5,000 SF)

SUITE 12717-A (3,000 SF)

SUITE 12719-1 (2,500 SF)

SUITE 12719-2 (2,500 SF)

SUITE 12719-4 (2,500 SF)

SUITE 12721-2 (2,500 SF)



All information furnished regarding property for sale, rental or financing is from sources deemed reliable, but no warranty or representation is made to the accuracy thereof and same is submitted to errors, omissions, change of price, rental or other conditions prior to sale, lease or financing or withdrawal without notice. No liability of any kind is to be imposed on the broker herein.

FOR MORE INFORMATION:

JEREMY MOJICA

806.786.2263

jmojica@lee-associates.com

TAYLOR STELL

214.558.1969

tstell@lee-associates.com

AERIAL MAP



Highway 287
10 MIN



Texas 360 Toll
13 MIN



I-30
30 MIN



Dallas-Fort Worth
International Airport
45 MIN

All information furnished regarding property for sale, rental or financing is from sources deemed reliable, but no warranty or representation is made to the accuracy thereof and same is submitted to errors, omissions, change of price, rental or other conditions prior to sale, lease or financing or withdrawal without notice. No liability of any kind is to be imposed on the broker herein.

FOR MORE INFORMATION:

JEREMY MOJICA

806.786.2263

jmojica@lee-associates.com

TAYLOR STELL

214.558.1969

tstell@lee-associates.com