



# FOXRIDGE PLAZA



## PROPERTY FOR LEASE

5800 FOXRIDGE DR.  
MISSION, KANSAS



# ABOUT FOXRIDGE PLAZA

---

This six-story, Class B+ office building offers flexible suites ranging from 1,200 to 10,000+ square feet, making it ideal for businesses of all sizes. The building's location provides excellent accessibility, with easy connections to I-35 and I-635 via Metcalf Avenue. Additionally, the property is within walking distance of various retail and dining options, offering convenience for both employees and visitors.

**PRICE PER SF - \$21.50/SF**  
**FULL SERVICE**





# PROPERTY FEATURES

- SHARED CONFERENCE ROOM
- SHARED TENANT LOUNGE
- ONSITE BUILDING ENGINEER
- LOCAL PROPERTY MANAGEMENT
- PARKING RATIO, 4/1,000
- GOOGLE FIBER, SPECTRUM & AT&T AVAILABLE
- I-35 AND I-635 ACCESS AT METCALF AVENUE
- AVAILABLE FOR KANSAS STATE INCENTIVES IF RELOCATING FROM MISSOURI
- A LANDMARK LOCATION WITHIN WALKING DISTANCE TO RETAIL AND RESTAURANTS



5800  
FOXTRIDGE DR.  
MISSION,  
KANSAS



MERRIAM, KS	5MINS
SHAWNEE, KS	10MINS
PRAIRIE VILLAGE, KS	10MINS
OVERLAND PARK, KS	10MINS
KANSAS CITY, MO	12-MINS

JOHNSON DRIVE

METCALF AVE

W 63RD STREET

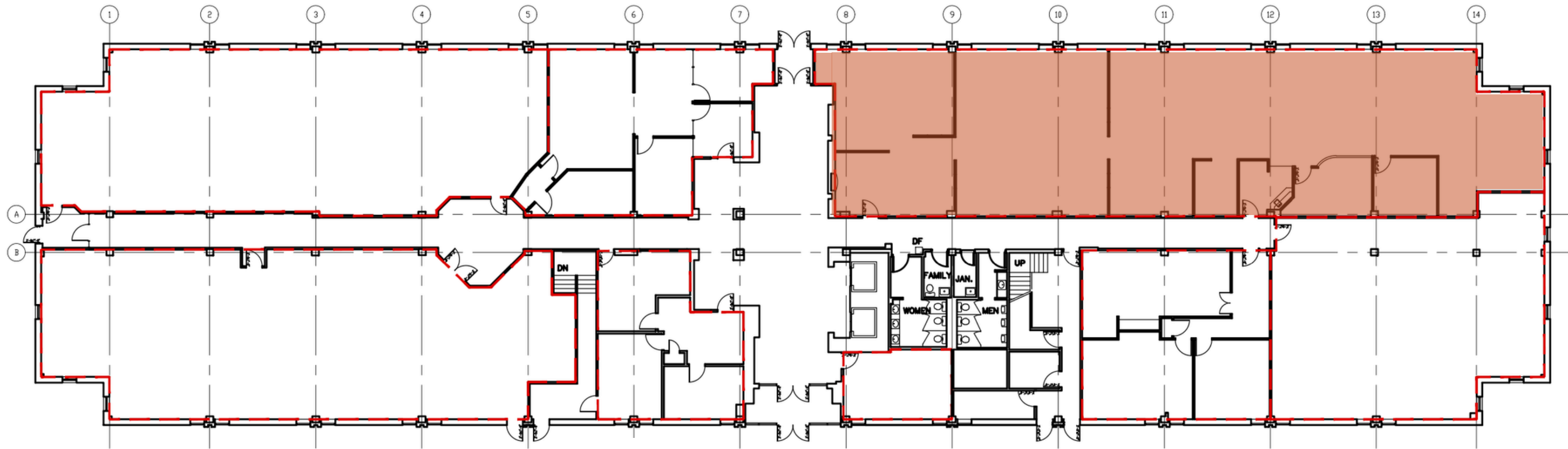


L  
O  
C  
A  
T  
I  
O  
N



# FIRST FLOOR AVAILABLE SPACE

SUITE 110  
4,574 RSF



ANDREW BRAIN  
(816) 281-5900  
ABRAIN@BRAINGROUP.COM

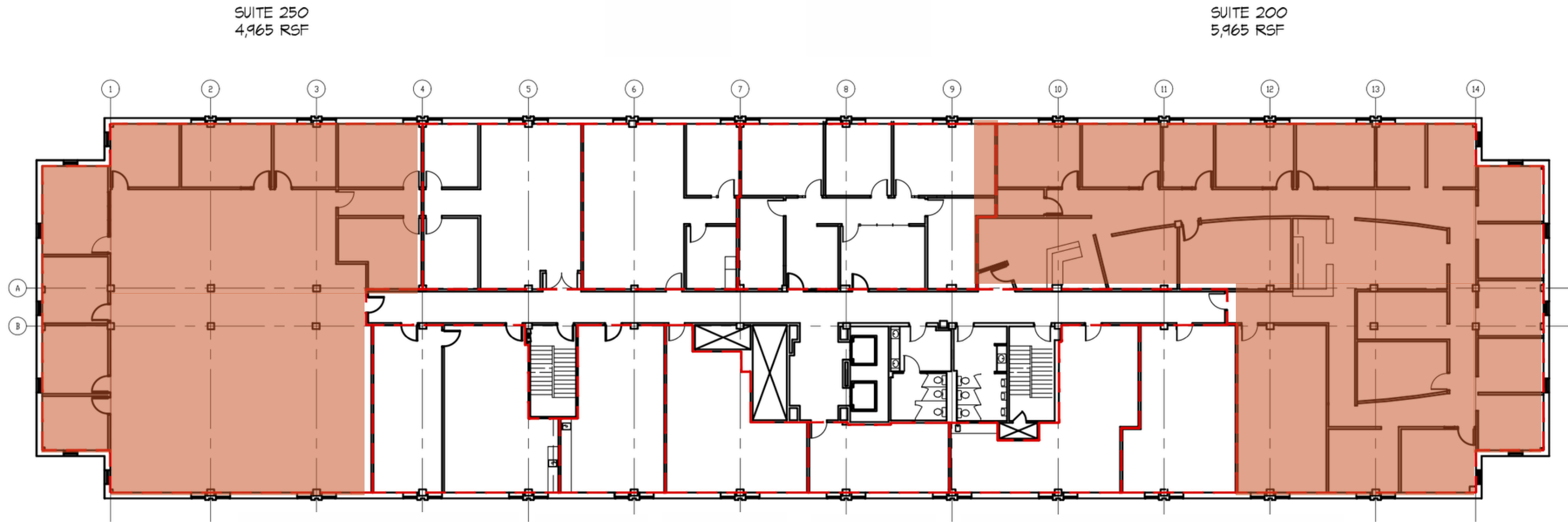
KIMMY ANGIER  
(816) 281-5900  
KANGIER@BRAINGROUP.COM



300 E 39TH ST KCMO, 64111  
WWW.BRAINGROUP.COM



# SECOND FLOOR AVAILABLE SPACE



ANDREW BRAIN  
(816) 281-5900  
ABRAIN@BRAINGROUP.COM

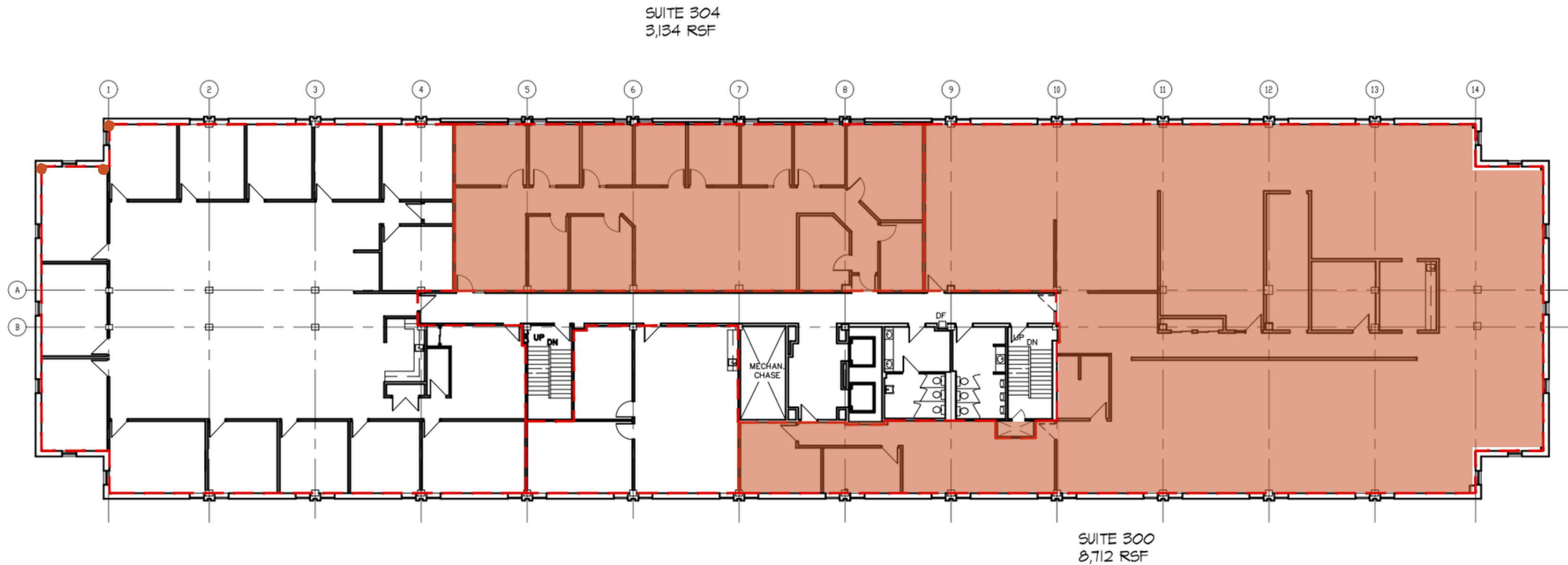
KIMMY ANGIER  
(816) 281-5900  
KANGIER@BRAINGROUP.COM



300 E 39TH ST KCMO, 64111  
WWW.BRAINGROUP.COM



# THIRD FLOOR AVAILABLE SPACE



ANDREW BRAIN  
(816) 281-5900  
ABRAIN@BRAINGROUP.COM

KIMMY ANGIER  
(816) 281-5900  
KANGIER@BRAINGROUP.COM



300 E 39TH ST KCMO, 64111  
WWW.BRAINGROUP.COM



# FOURTH FLOOR AVAILABLE SPACE



ANDREW BRAIN  
(816) 281-5900  
ABRAIN@BRAINGROUP.COM

KIMMY ANGIER  
(816) 281-5900  
KANGIER@BRAINGROUP.COM



300 E 39TH ST KCMO, 64111  
WWW.BRAINGROUP.COM



# LET'S TALK

KIMMY ANGIER  
(816) 281-5900  
KANGIER@BRAINGROUP.COM

ANDREW BRAIN  
(816) 281-5900  
ABRAIN@BRAINGROUP.COM

300 E 39TH ST KCMO, 64111  
WWW.BRAINGROUP.COM



BRAIN GROUP

