

**NEWLY RENOVATED**

**WEIGAND**  
COMMERCIAL



# WAREHOUSE/MANUFACTURING

FOR LEASE 3600 N. SANTA FE, WICHITA, KS 67219

**LEASE RATE  
CONTACT BROKER**

**SITE SIZE**  
448,257 SF (10.29± A)

**BUILDING SIZE**  
\* 212,280 SF±

**TOTAL AVAILABLE SPACE**  
\* 128,530 SF±, DIVISIBLE  
(SEE FLOOR PLAN)

**CEILING HEIGHT**  
13'1" - 19'7"

**SPRINKLED**  
WET

**YEAR BUILT**  
1951, 1955, 1957  
IMPROVEMENTS: 1970, 1975

**CONSTRUCTION**  
FORMED CONCRETE, METAL  
ON WOOD, CONCRETE BLOCK

**DOCK DOORS**  
6 - 2 ON WEST LOADING RAMP,  
2 ON SOUTH LOADING RAMP

**OVERHEAD DOORS**  
4 (1 WITH RAMP)

**ZONING**  
GENERAL INDUSTRIAL

**2025 TAXES (\$0.53/SF)**  
GENERALS: \$111,959.33  
SPECIALS: \$120.00

**PARKING**  
AMPLE

**PROPERTY HIGHLIGHTS**

- Newly renovated.
- Office/warehouse available for lease.
- Heavy power.
- Excellent access to all major arterials via Broadway at I-235.



\*Square footage referenced is per floor plan - excludes office and mezzanine.

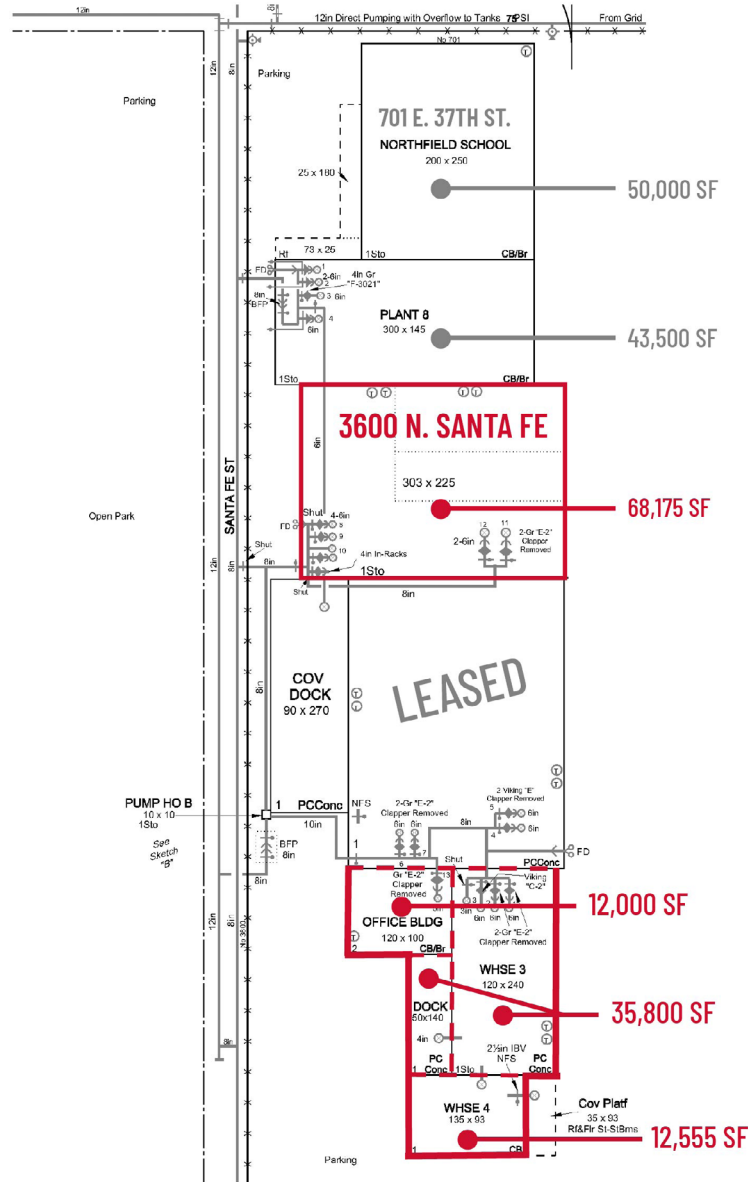


Grant Tidemann, SIOR  
316-292-3908  
tidemann@weigand.com

Bradley Tidemann, SIOR  
316-650-8853  
bradley@tidemannre.com



**SITE PLAN**



All information furnished regarding property for sale, lease, exchange or financing is from sources deemed reliable but no guarantee is made or responsibility assumed as to its accuracy or completeness and you are advised to make your own analysis and verification. Agent hereby notifies prospective buyer/lessee that (a) Agent will be acting as a designated agent of seller/lessor with the duty to represent seller/lessor's interest; and (b) Information given to Agent will be disclosed to seller/lessor.



**Grant Tidemann, SIOR**  
 316-292-3908  
 tidemann@weigand.com

**Bradley Tidemann, SIOR**  
 316-650-8853  
 bradley@tidemannre.com



# WAREHOUSE/MANUFACTURING FOR LEASE 3600 N. SANTA FE, WICHITA, KS 67219

**WEIGAND**  
COMMERCIAL

## NEIGHBORHOOD AERIAL



All information furnished regarding property for sale, lease, exchange or financing is from sources deemed reliable but no guarantee is made or responsibility assumed as to its accuracy or completeness and you are advised to make your own analysis and verification. Agent hereby notifies prospective buyer/lessee that (a) Agent will be acting as a designated agent of seller/lessor with the duty to represent seller/lessor's interest; and (b) Information given to Agent will be disclosed to seller/lessor.



Grant Tidemann, SIOR  
316-292-3908  
tidemann@weigand.com

Bradley Tidemann, SIOR  
316-650-8853  
bradley@tidemannre.com



# WAREHOUSE/MANUFACTURING FOR LEASE 3600 N. SANTA FE, WICHITA, KS 67219

**WEIGAND**  
COMMERCIAL

AERIAL VIEW



All information furnished regarding property for sale, lease, exchange or financing is from sources deemed reliable but no guarantee is made or responsibility assumed as to its accuracy or completeness and you are advised to make your own analysis and verification. Agent hereby notifies prospective buyer/lessee that (a) Agent will be acting as a designated agent of seller/lessor with the duty to represent seller/lessor's interest; and (b) Information given to Agent will be disclosed to seller/lessor.



Grant Tidemann, SIOR  
316-292-3908  
tidemann@weigand.com

Bradley Tidemann, SIOR  
316-650-8853  
bradley@tidemannre.com

