

OFFICE/RETAIL SPACE

12802 Santa Fe Trail Drive
Lenexa, KS 66215



- 1,841 SF office/retail space
- 200 amp single phase electric
- Open floor plan including:
 - 1 private office
 - 1 bathroom
 - 2 storage rooms
- Abundant windows provide great natural light

LEASE RATE: \$10.00/SF NNN

Taxes & insurance: \$2.83/SF

CAM: \$0.98/SF

\$2,100/mo + utilities

2025 Demographics	1 mile	3 miles	5 miles
Total Population	9,770	98,361	227,026
# Households	4,532	43,496	100,302
Avg HH Income	\$86,957	\$111,880	\$118,000

Lynn Holcomb, SIOR

lholcomb@fishmancommercial.com

913.747.3301 O 816.289.1526 C

Ryan Holcomb

rholcomb@fishmancommercial.com

913.747.3321 O 913.526.2904 C



OFFICE/RETAIL SPACE

12802 Santa Fe Trail Drive
Lenexa, KS 66215



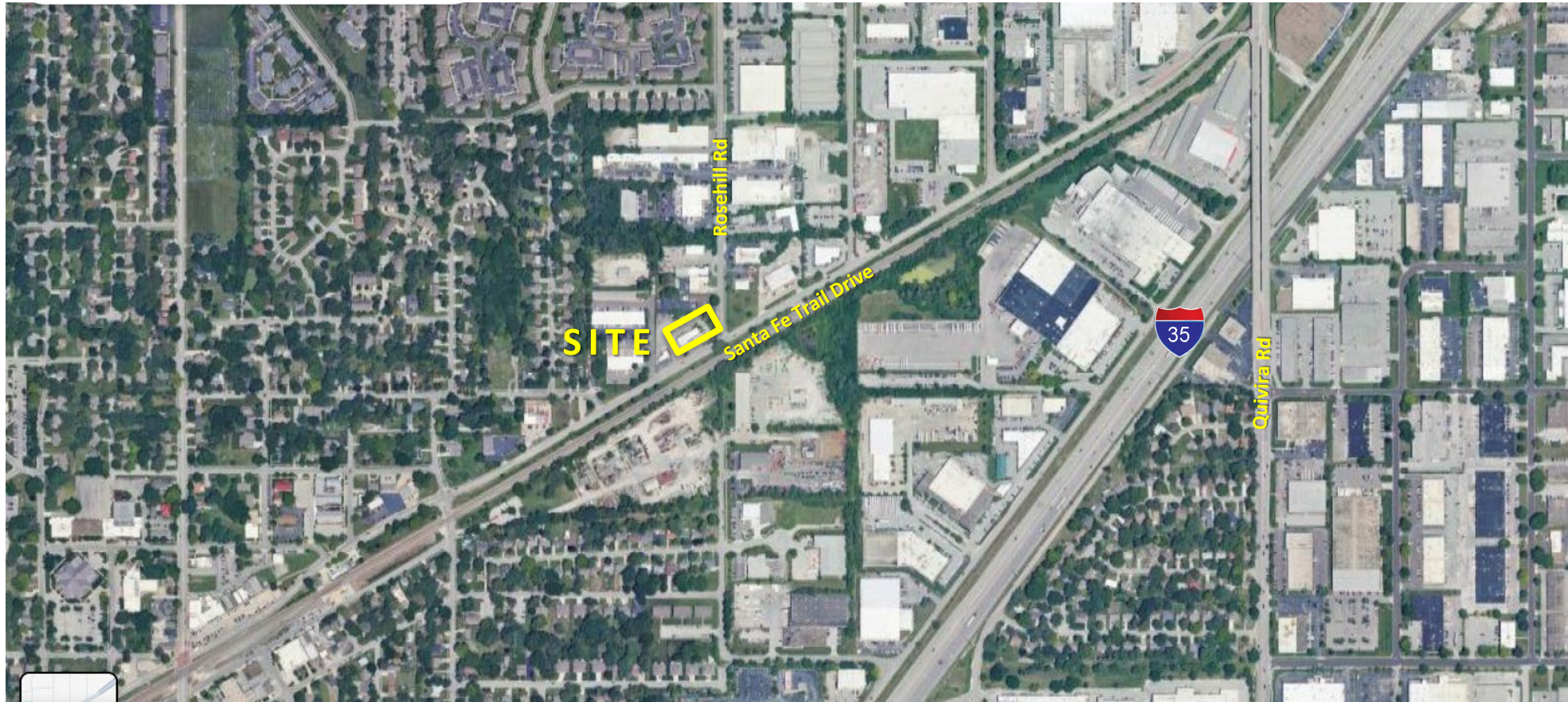
Lynn Holcomb, SIOR
lholcomb@fishmancommercial.com
913.747.3301 O 816.289.1526 C

Ryan Holcomb
rholcomb@fishmancommercial.com
913.747.3321 O 913.526.2904 C



OFFICE/RETAIL SPACE

12802 Santa Fe Trail Drive
Lenexa, KS 66215



Lynn Holcomb, SIOR
lholcomb@fishmancommercial.com
913.747.3301 O 816.289.1526 C

Ryan Holcomb
rholcomb@fishmancommercial.com
913.747.3321 O 913.526.2904 C

