



HEALEY BUILDING

Downtown 2nd Generation Restaurant Space For Lease HISTORIC HEALEY BUILDING

Bounded by Broad Street, Walton Street, Forsyth Street & Poplar Street



Healey Building

57 Forsyth St NW, Suite R6 (Near the Corner of Broad Street & Poplar Street)
Atlanta, GA 30303

SIZE: 738 RSF
RATE: \$45.00/SF NNN
OPEX: \$10.00

- Street Level Exposure and Access
- Fully Built Out Restaurant Space with Inline Ductless Venting Hood System and Inline Grease Trap
- Adjacent to , GSU Aderhold Learning Center, Rialto Theatre & the GSU School of Music
- Perfect for Pick Up and Takeout Restaurant Concepts
- Building on the National Register of Historic Places



Dave Smith

404.939.0162

dave@intowncommercial.com

For complete details, please visit: www.alanjoelpartners.com



455 E Paces Ferry Rd, Suite 312, Atlanta, GA 30305

The information was obtained from sources we assume are reliable. We do not doubt its accuracy, however we do not guarantee it. No liability is assumed for errors and omissions. Information is subject to changes and withdrawal without notice.



HEALEY BUILDING

Healey Building Retail Floor Plan

Walton Street



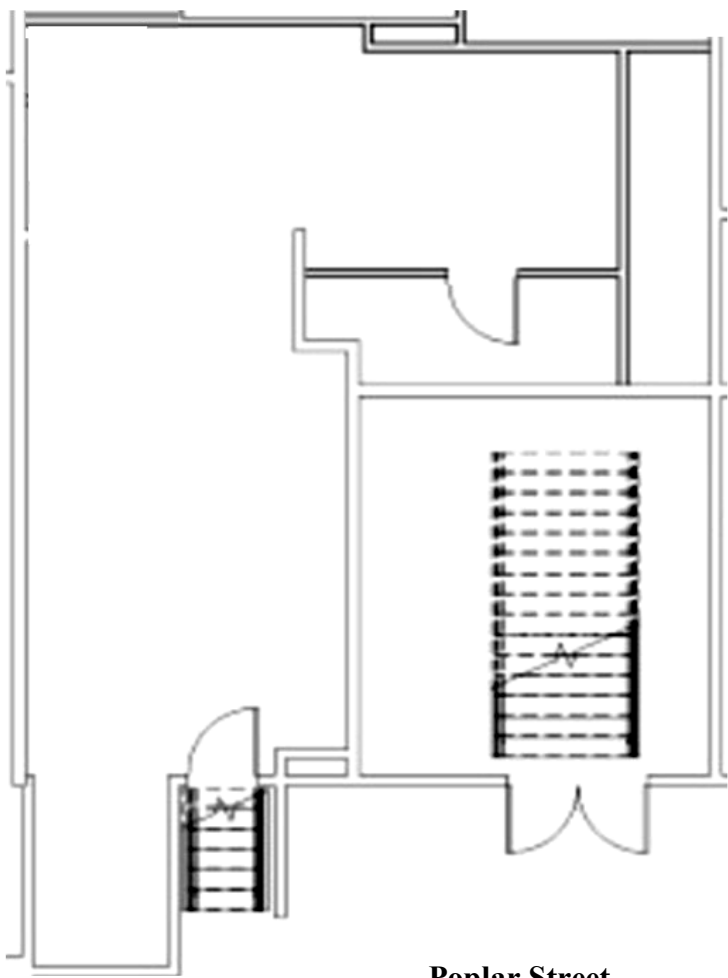
455 E Paces Ferry Rd, Suite 312, Atlanta, GA 30305

The information was obtained from sources we assume are reliable. We do not doubt its accuracy, however we do not guarantee it. No liability is assumed for errors and omissions. Information is subject to changes and withdrawal without notice.



HEALEY BUILDING

Healey Building Suite R6 738 RSF



Poplar Street



Dave Smith
404.939.0162
dave@intowncommercial.com

For complete details, please visit: www.alanjoelpartners.com

455 E Paces Ferry Rd, Suite 312, Atlanta, GA 30305
(ph) 404.869.2600

The information was obtained from sources we assume are reliable. We do not doubt its accuracy, however we do not guarantee it. No liability is assumed for errors and omissions. Information is subject to changes and withdrawal without notice.