
OFFICE/RETAIL SPACE ON CORNER LOCATION IN DOWNTOWN STAUNTON

23-27 North Central Avenue, Staunton, VA 24401

Executive Summary



OFFERING SUMMARY

Available SF:	4,187 SF
Lease Rate:	\$13.00 SF/yr (Gross)
Utilities:	Public Water Public Sewer
Zoning:	B2
Parking:	Public Garage/Lot On/Off Street
MLS#:	671046



PROPERTY OVERVIEW

Over 4150SF of office/retail space on corner of Central and Frederick, this space is move in ready and has two storefront street facing entrances. This space is split over two floors with over 2350SF on first level which is full of retail floor space, open work space, conference room or private offices and over 1750SF on lower level, with break area, more private offices, training space and more! This building is anchored by professional users and has great visibility being right on a busy corner in Downtown! Adjoining space is available.

For More Information:

Craig Anders
540.383.6054
craig.anders@cottonwood.com

Greg Keeler
540.478.5232
greg.keeler@cottonwood.com

COTTONWOOD
COMMERCIAL
A COMMERCIAL REAL ESTATE BROKERAGE

OFFICE/RETAIL SPACE ON CORNER LOCATION IN DOWNTOWN STAUNTON

23-27 North Central Avenue, Staunton, VA 24401

27 N Central Avenue



For More Information:

Craig Anders
540.383.6054
craig.anders@cottonwood.com

Greg Keeler
540.478.5232
greg.keeler@cottonwood.com

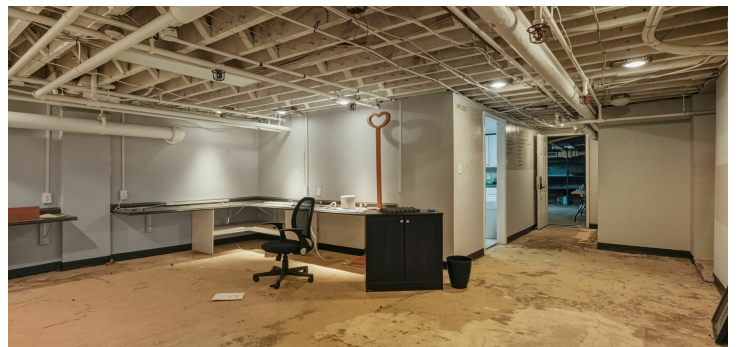
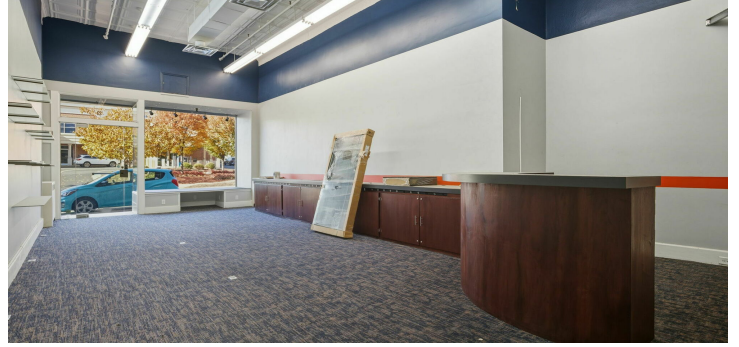
COTTONWOOD
COMMERCIAL
A COMMERCIAL REAL ESTATE BROKERAGE

We obtained the information above from sources we believe to be reliable. However, we have not verified its accuracy and make no guarantee, warranty or representation about it. It is submitted subject to the possibility of errors, omissions, change of price, rental or other conditions, prior sale, lease or financing, or withdrawal without notice. We include projections, opinions, assumptions or estimates for example only, and they may not represent current or future performance of the property. You and your tax and legal advisors should conduct your own investigation of the property and transaction.

OFFICE/RETAIL SPACE ON CORNER LOCATION IN DOWNTOWN STAUNTON

23-27 North Central Avenue, Staunton, VA 24401

23 N Central Ave - 1st Floor & 2nd Floor



For More Information:

Craig Anders

540.383.6054

craig.anders@cottonwood.com

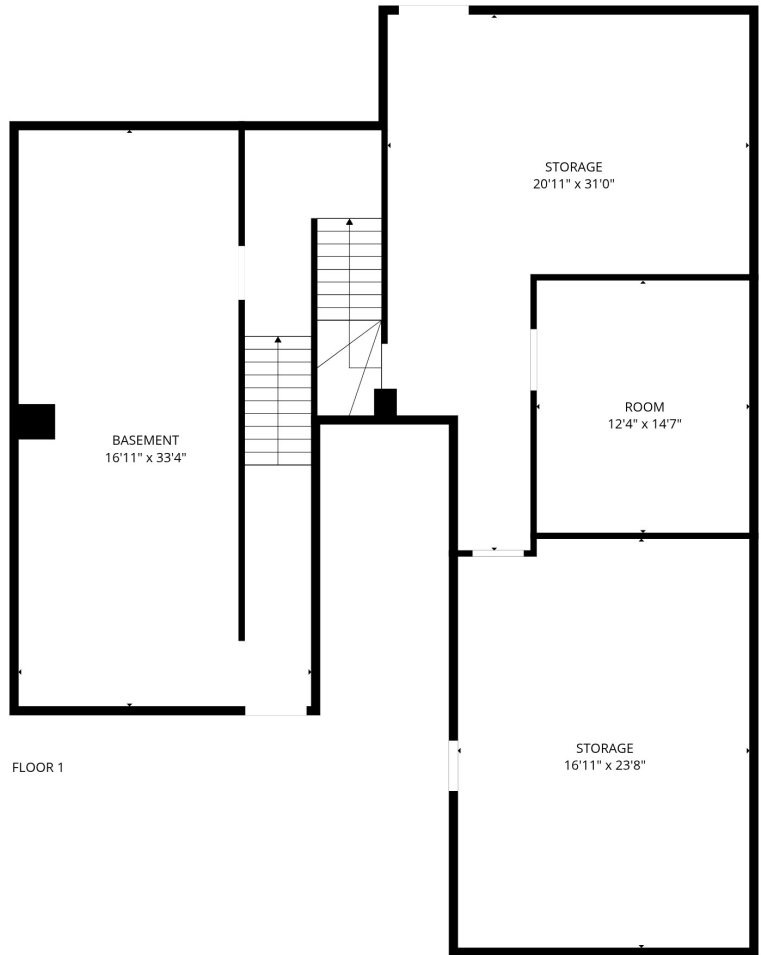
Greg Keeler

540.478.5232

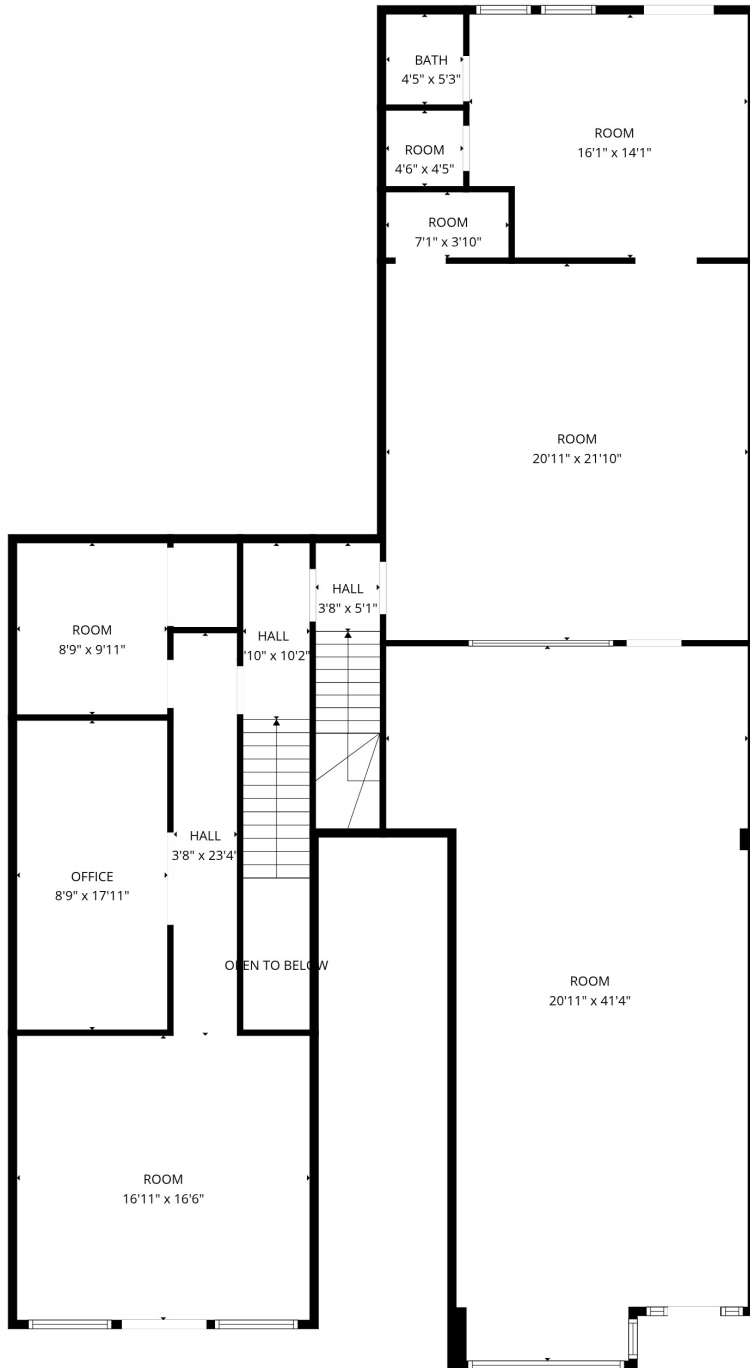
greg.keeler@cottonwood.com

COTTONWOOD
COMMERCIAL
A COMMERCIAL REAL ESTATE BROKERAGE

We obtained the information above from sources we believe to be reliable. However, we have not verified its accuracy and make no guarantee, warranty or representation about it. It is submitted subject to the possibility of errors, omissions, change of price, rental or other conditions, prior sale, lease or financing, or withdrawal without notice. We include projections, opinions, assumptions or estimates for example only, and they may not represent current or future performance of the property. You and your tax and legal advisors should conduct your own investigation of the property and transaction.



FLOOR 1



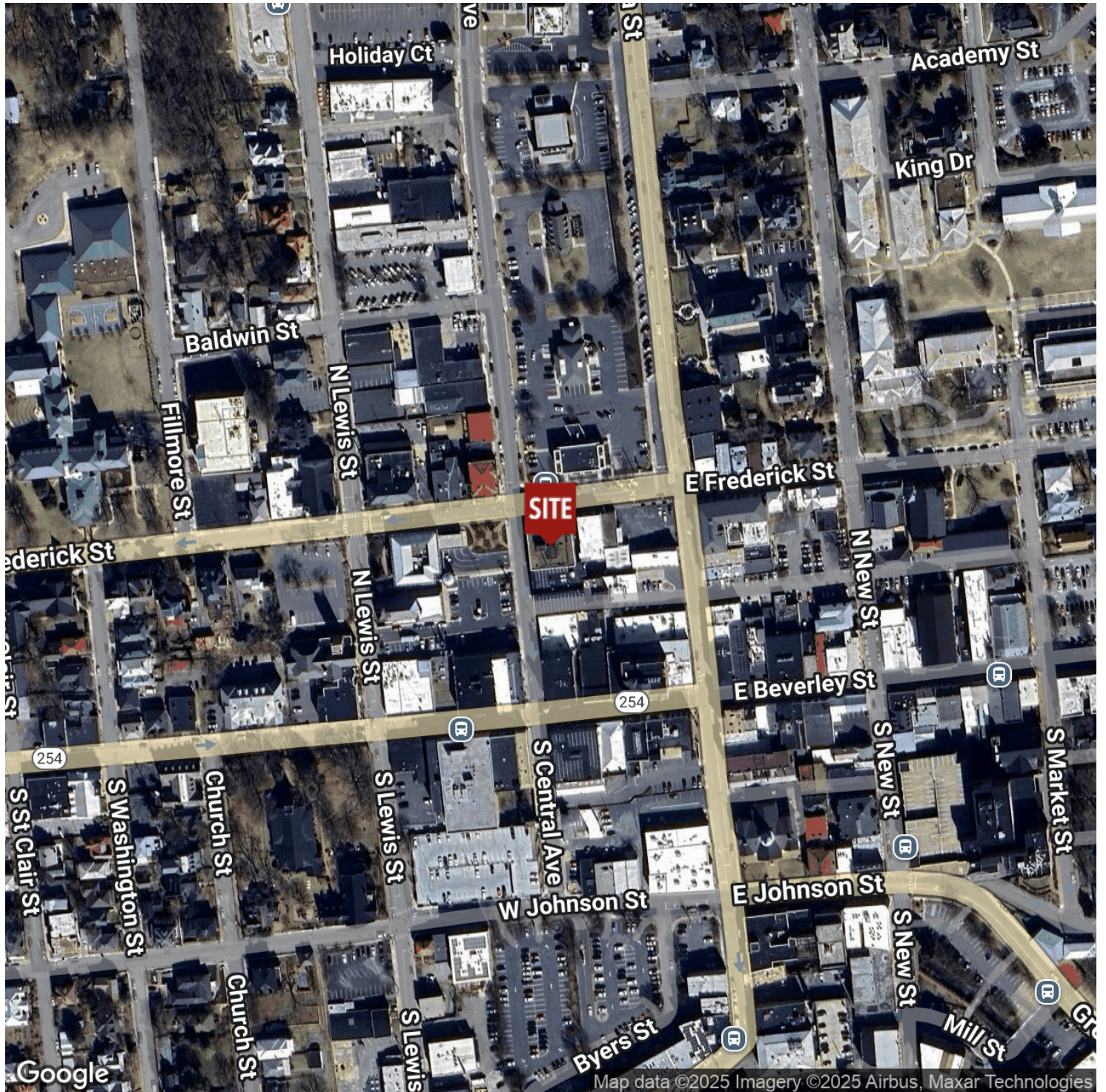
FLOOR 2

27 N. Central Ave // All Floors
4187.16 sq.ft

OFFICE/RETAIL SPACE ON CORNER LOCATION IN DOWNTOWN STAUNTON

23-27 North Central Avenue, Staunton, VA 24401

Location Map



For More Information:

Craig Anders

540.383.6054

craig.anders@cottonwood.com

Greg Keeler

540.478.5232

greg.keeler@cottonwood.com

COTTONWOOD
COMMERCIAL
A COMMERCIAL REAL ESTATE BROKERAGE

We obtained the information above from sources we believe to be reliable. However, we have not verified its accuracy and make no guarantee, warranty or representation about it. It is submitted subject to the possibility of errors, omissions, change of price, rental or other conditions, prior sale, lease or financing, or withdrawal without notice. We include projections, opinions, assumptions or estimates for example only, and they may not represent current or future performance of the property. You and your tax and legal advisors should conduct your own investigation of the property and transaction.