

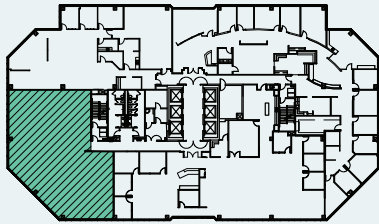


ESPLANADE

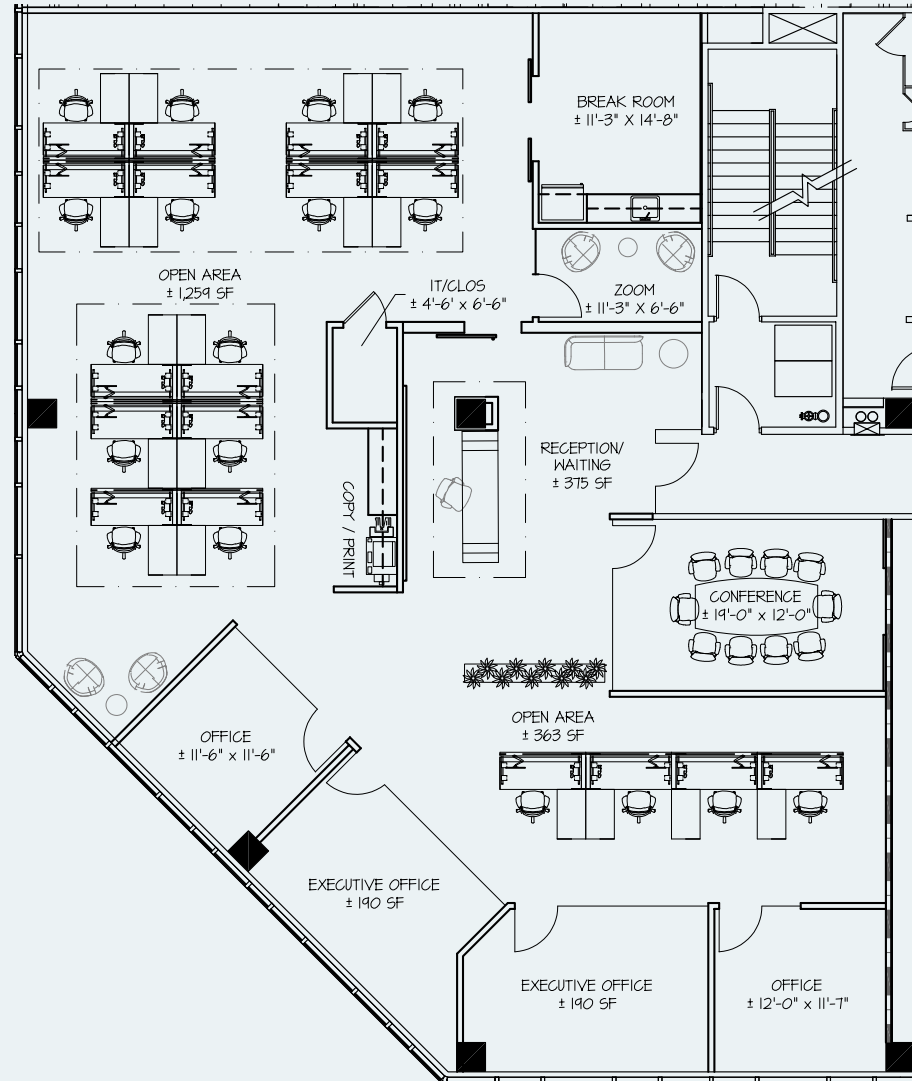
2575 EAST CAMELBACK ROAD

Spec Suite 770 | ±4,588 SF

KEY MAP



- 1** Reception
 - 4** Offices
 - 1** Conference Room
 - 1** IT/Storage Room
 - 1** Zoom Room
 - 1** Copy Area
 - 1** Break Room
- Potential for 18 Workstations



Not to scale.
All SF is approximate

COREY HAWLEY
602.735.1742
corey.hawley@cbre.com

BRYAN TAUTE
602.373.7163
bryan.taute@jll.com

WILL MASK
563.506.2959
will.mask@jll.com



© 2025 CBRE, Inc. All rights reserved. This information has been obtained from sources believed reliable, but has not been verified for accuracy or completeness. You should conduct a careful, independent investigation of the property and verify all information. Any reliance on this information is solely at your own risk. CBRE and the CBRE logo are service marks of CBRE, Inc. All other marks displayed on this document are the property of their respective owners, and the use of such logos does not imply any affiliation with or endorsement of CBRE. Photos herein are the property of their respective owners. Use of these images without the express written consent of the owner is prohibited.