

# For Lease

## Sherman Oaks Medical Plaza

4955 Van Nuys Boulevard,  
Sherman Oaks, California

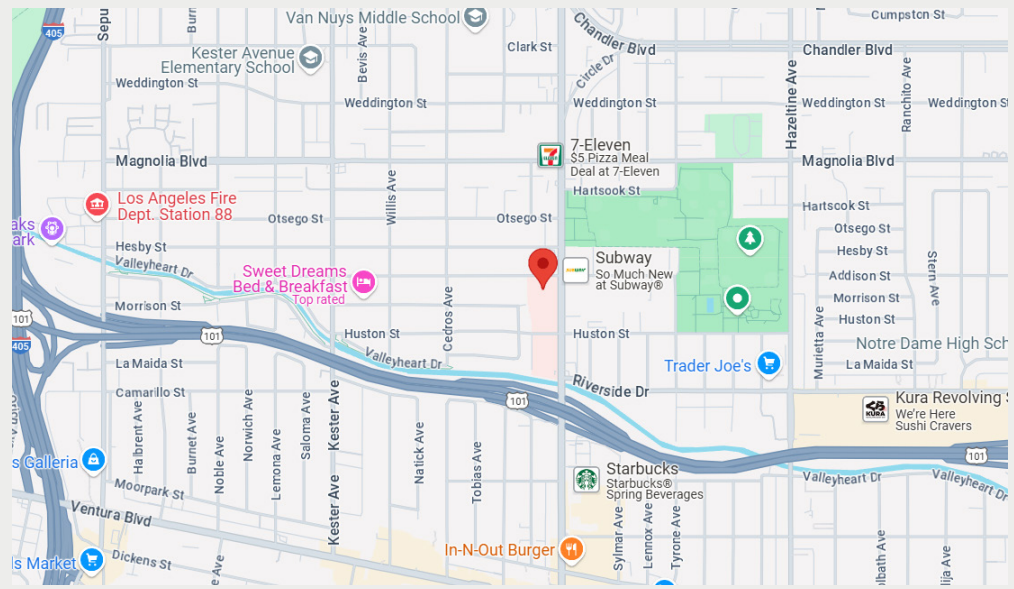
Chris Isola  
213 239 6045  
[chris.isola@jll.com](mailto:chris.isola@jll.com)

Carolyn Pasqualetto  
626.818.4715  
[carolyn.pasqualetto@jll.com](mailto:carolyn.pasqualetto@jll.com)

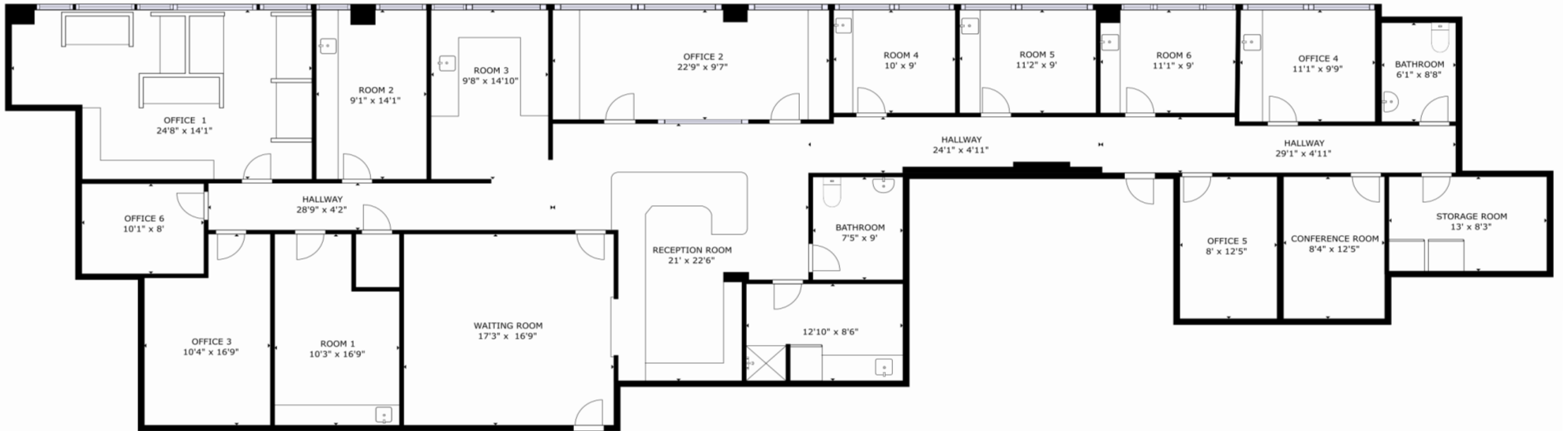


# Property Highlights

- Professionally managed and maintained
- Class A Outpatient Medical Building
- On the campus of Sherman Oaks Hospital
- Three hospitals within 2 miles: Encino Hospital, Sherman Oaks Hospital and Valley Presbyterian
- Pharmacy with state of the art treatment area
- Dialysis unit
- Walking distance to retail amenities including restaurants and shops



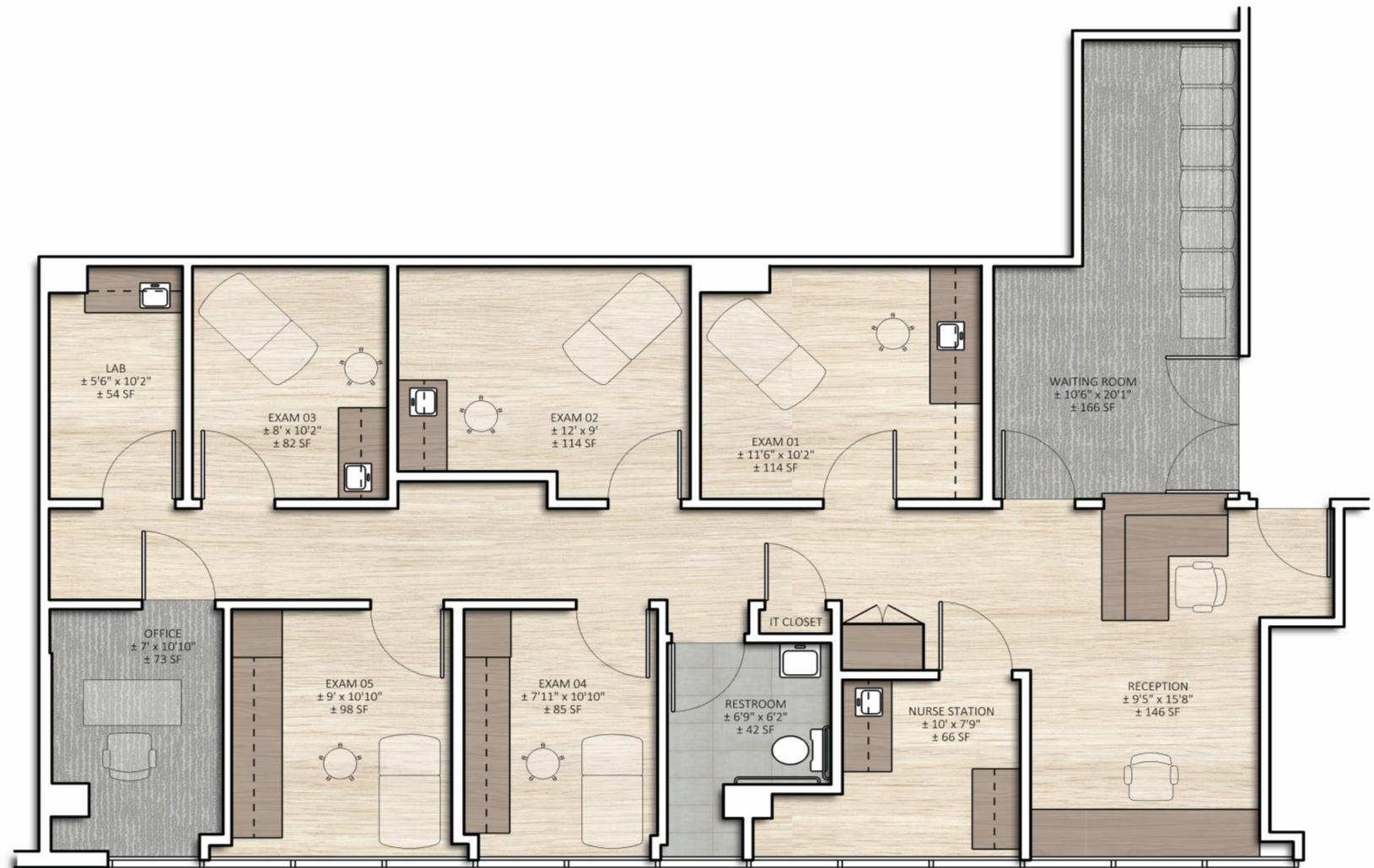
# Suite 200 | 3,787 RSF



Chris Isola  
213 239 6045  
chris.isola@jll.com

Carolyn Pasqualetto  
626 818 4715  
carolyn.pasqualetto@jll.com

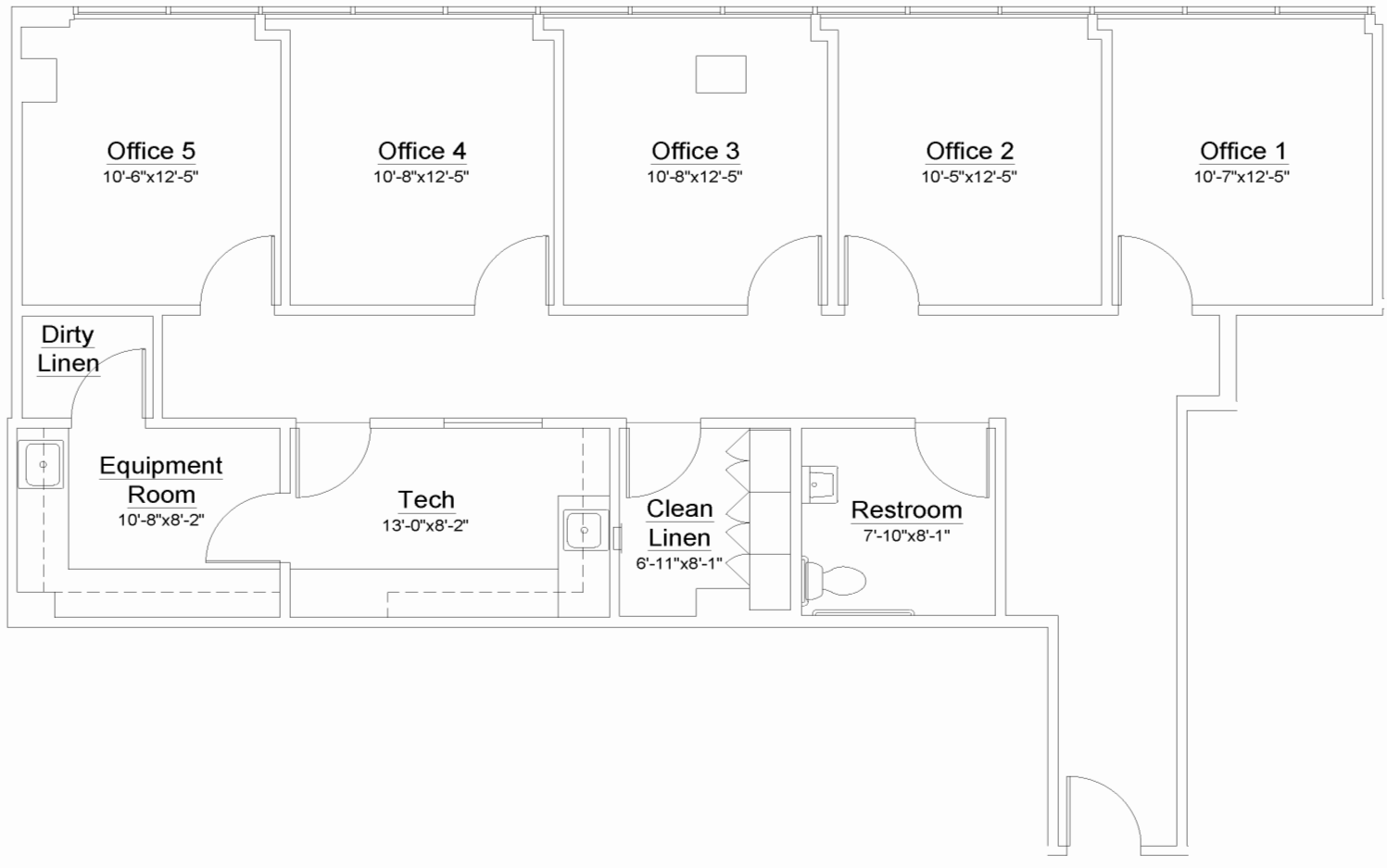
# Suite 301 | 1,611 RSF



Chris Isola  
213 239 6045  
chris.isola@jll.com

Carolyn Pasqualetto  
626 818 4715  
carolyn.pasqualetto@jll.com

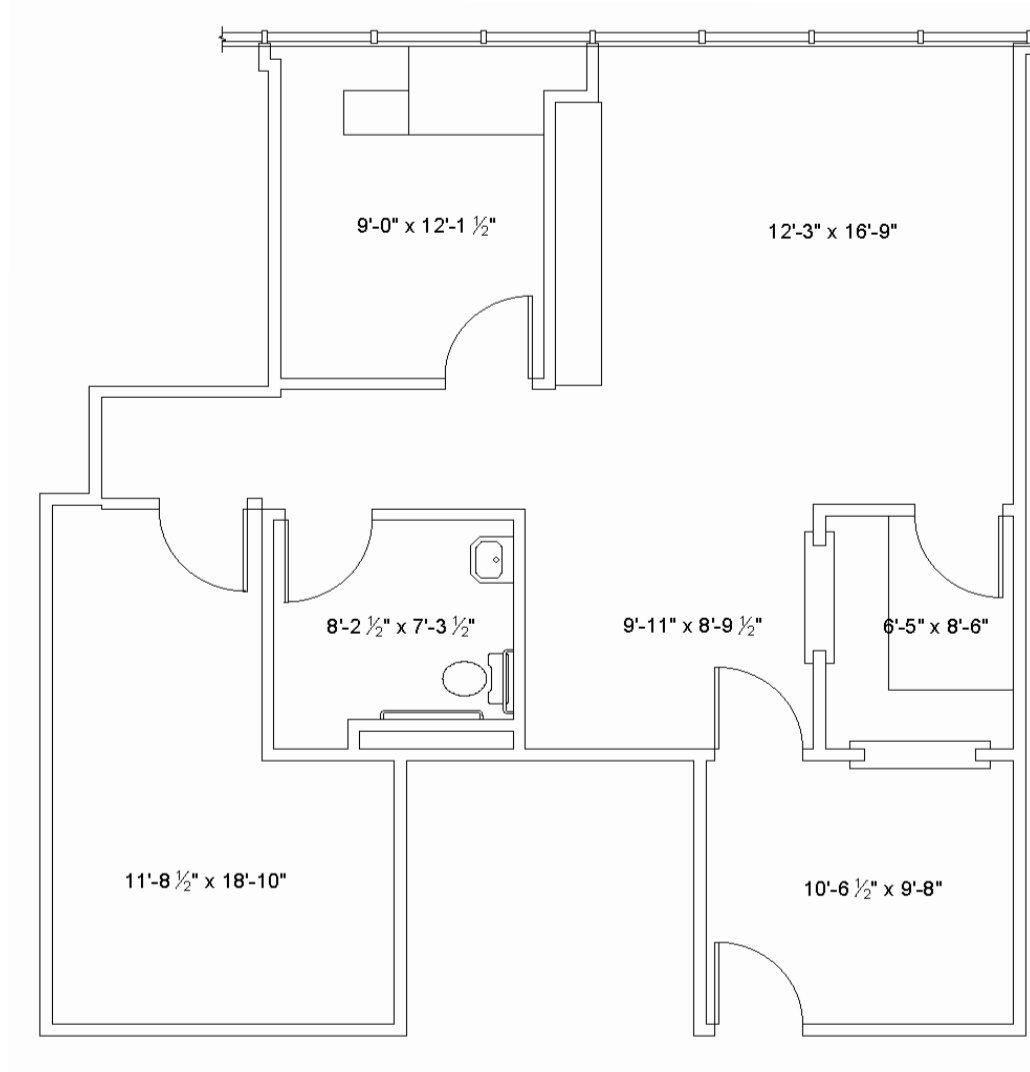
# Suite 417 | 1,653 RSF



Chris Isola  
213 239 6045  
chris.isola@jll.com

Carolyn Pasqualetto  
626 818 4715  
carolyn.pasqualetto@jll.com

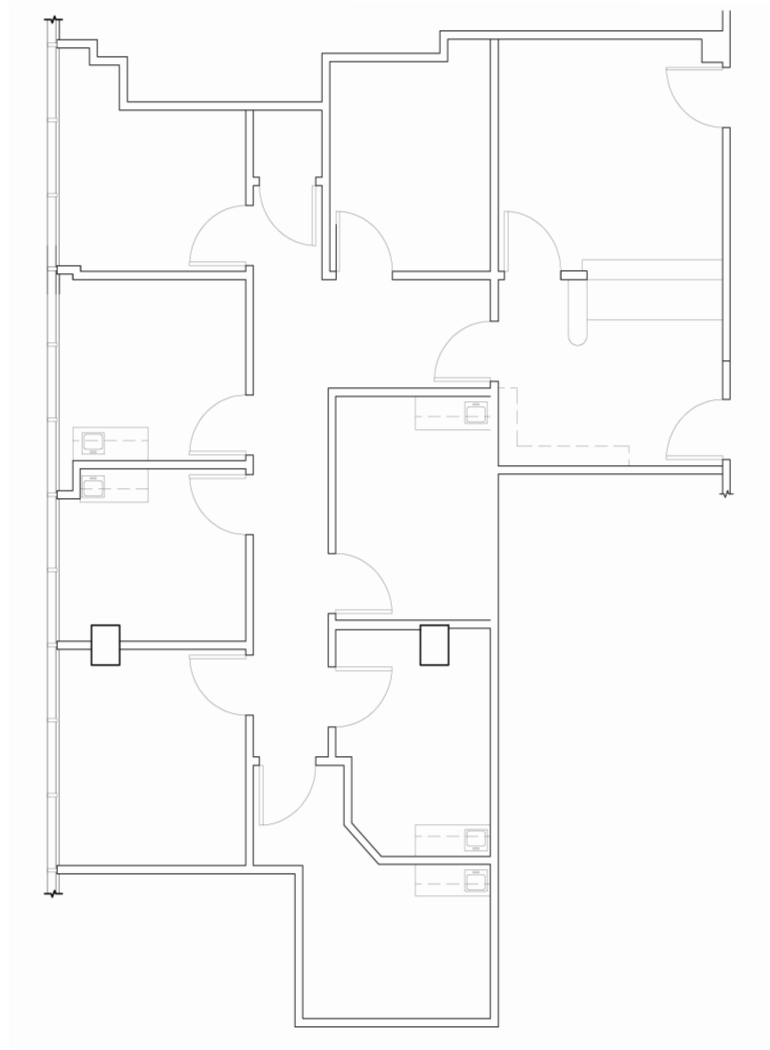
# Suite 419 | 1,136 RSF



Chris Isola  
213 239 6045  
chris.isola@jll.com

Carolyn Pasqualetto  
626 818 4715  
carolyn.pasqualetto@jll.com

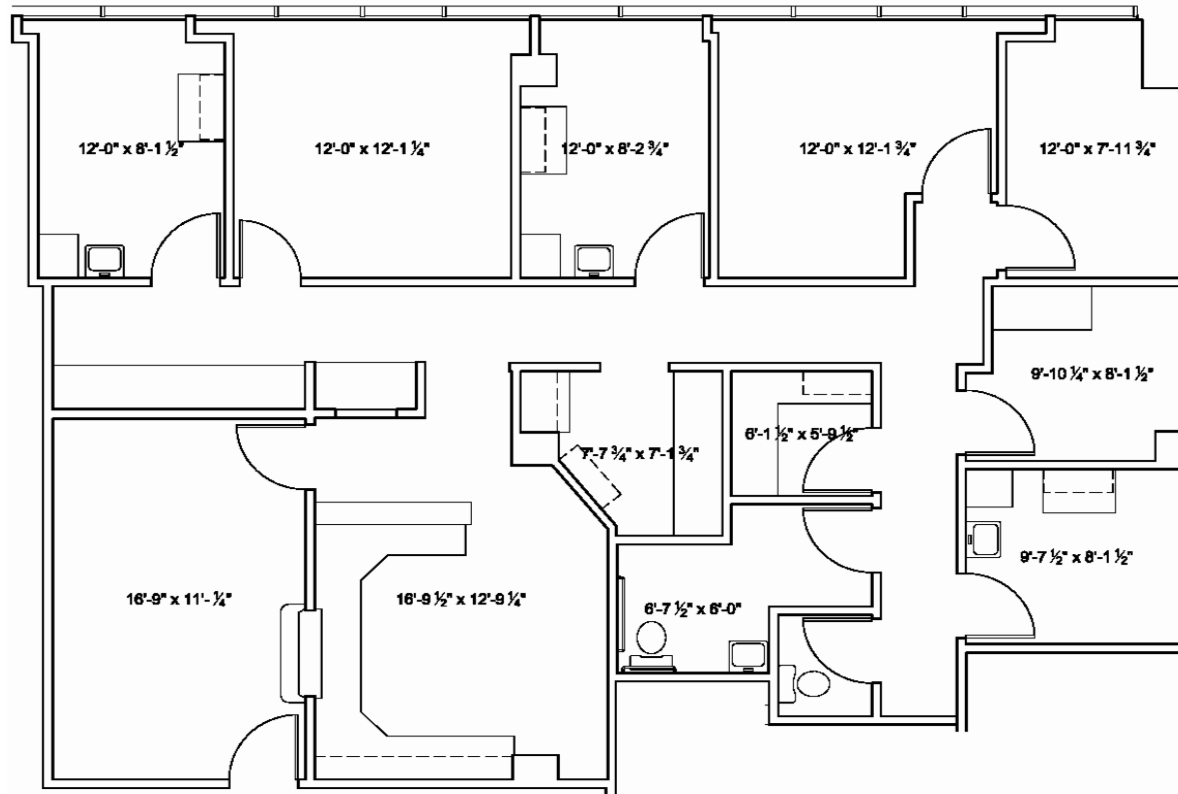
# Suite 514 | 1,505 RSF



Chris Isola  
213 239 6045  
chris.isola@jll.com

Carolyn Pasqualetto  
626 818 4715  
carolyn.pasqualetto@jll.com

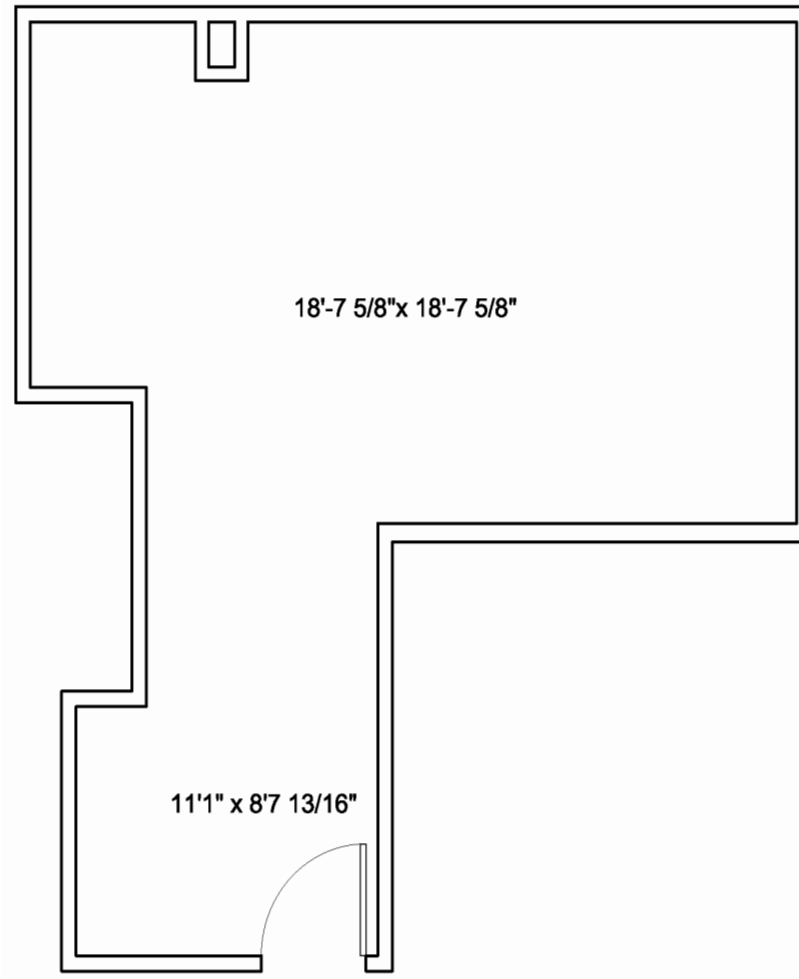
# Suite 715 | 1,979 RSF



Chris Isola  
213 239 6045  
chris.isola@jll.com

Carolyn Pasqualetto  
626 818 4715  
carolyn.pasqualetto@jll.com

# Suite 717 | 461 RSF



Chris Isola  
213 239 6045  
chris.isola@jll.com

Carolyn Pasqualetto  
626 818 4715  
carolyn.pasqualetto@jll.com

# Chris Isola

213 239 6045

[chris.isola@jll.com](mailto:chris.isola@jll.com)

# Carolyn Pasqualetto

[carolyn.pasqualetto@jll.com](mailto:carolyn.pasqualetto@jll.com)