

For Lease Warehouse/Office Space

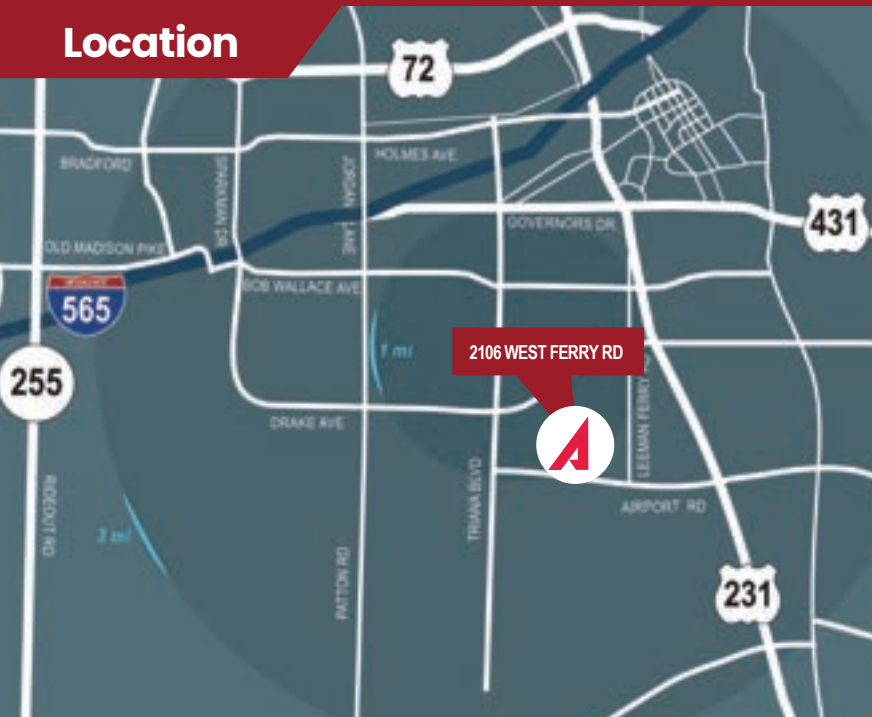
2106 W Ferry Way SW | Huntsville, AL 35801

~4,000–5,000 Sq Ft

Lease Rate – \$14.50 SF/yr (NNN)



Location



Property Highlights

- Suite One: 4,000 SF
- Suite Two: 5,000 SF
- 80% warehouse / 20% office
- Industrial (City of Huntsville)
- 21 foot ceiling in warehouse area
- 1 dock-high door
- 3-phase power available
- On-building signage opportunity available
- Excellent proximity to Downtown Huntsville, Redstone Arsenal, Memorial Parkway, and I-565
- Abundant nearby retail, dining, and service options in South Huntsville 65
- \$1.85psf NNN

NAI Chase Commercial

Commercial Real Estate Services, Worldwide.

P.O. Box 18153, Huntsville, AL 35804
www.chasecommercial.com

Erik Amason

amasonchasecommercial.com

C 703 405-9880

For Lease

Warehouse/Office Space

2106 W Ferry Way SW | Huntsville, AL 35801

~4,000–5,000 **Sq Ft**

Lease Rate – \$14.50 SF/yr (NNN)

Property Photos



NAI Chase Commercial

Commercial Real Estate Services, Worldwide.

P.O. Box 18153, Huntsville, AL 35804

www.chasecommercial.com



INDIVIDUAL MEMBERSHIPS

NO WARRANTY OR REPRESENTATION, EXPRESS OR IMPLIED, IS MADE AS TO THE ACCURACY OF THE INFORMATION CONTAINED HEREIN, AND THE SAME IS SUBMITTED SUBJECT TO ERRORS, OMISSIONS, CHANGE OF PRICE, RENTAL OR OTHER CONDITIONS, PRIOR SALE, LEASE OR FINANCING, OR WITHDRAWAL WITHOUT NOTICE, AND OF ANY SPECIAL LISTING CONDITIONS IMPOSED BY OUR PRINCIPAL. NO WARRANTIES OR REPRESENTATIONS ARE PROPERTY OR HAZARDS CONTAINED THEREIN.

For Lease

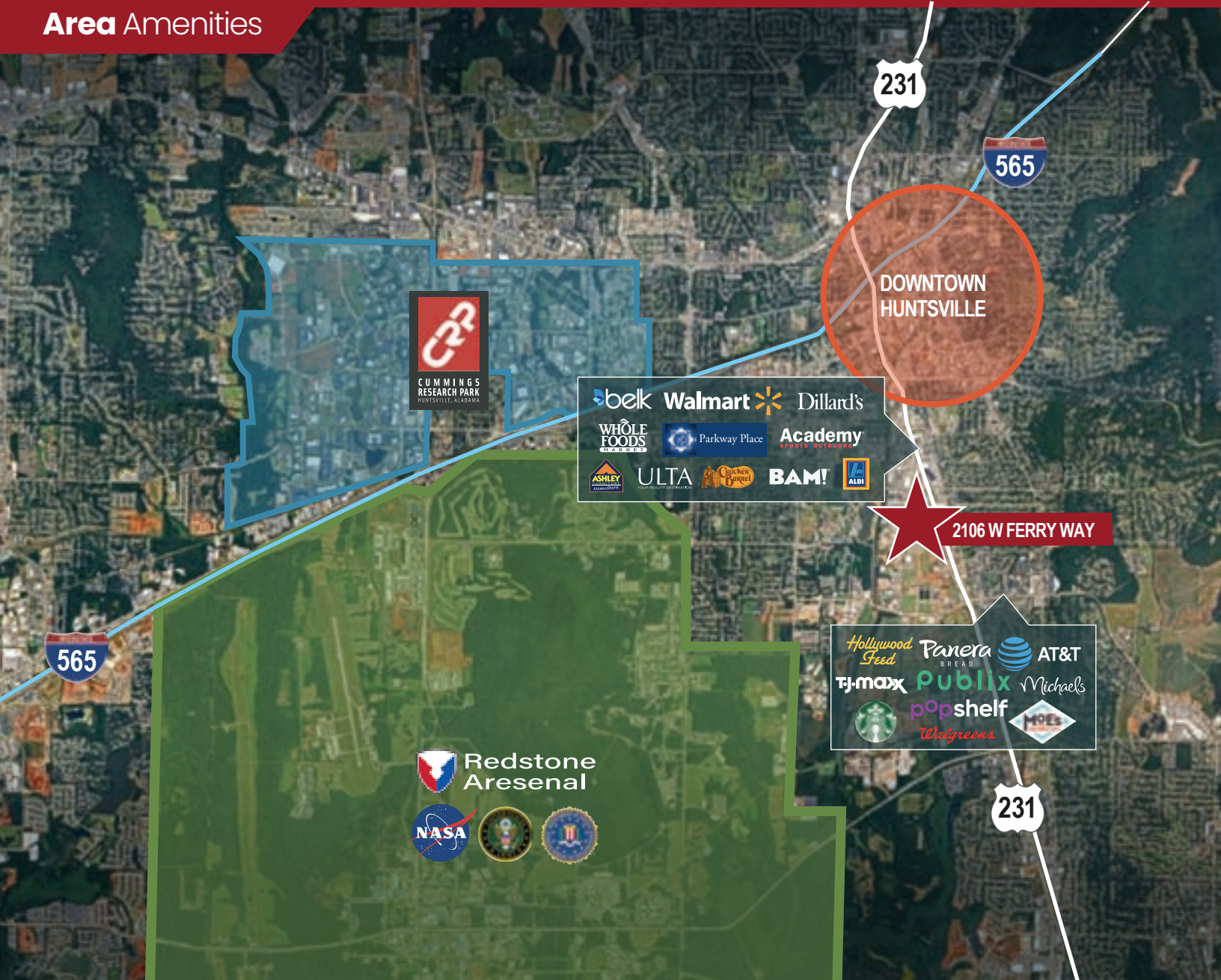
Warehouse/Office Space

2106 W Ferry Way SW | Huntsville, AL 35801

~4,000–5,000 Sq Ft

Lease Rate – \$14.50 SF/yr (NNN)

Area Amenities



Location Information

Located in the sought after Leeman Ferry corridor, in South Huntsville, with close proximity to downtown and easy access to Memorial Pkwy and I-565.

More Information



To see other available properties, check out our listings at chasecommercial.com or scan the QR code on your mobile device.

NAI Chase Commercial

Commercial Real Estate Services, Worldwide.

P.O. Box 18153, Huntsville, AL 35804

www.chasecommercial.com



INDIVIDUAL MEMBERSHIPS

NO WARRANTY OR REPRESENTATION, EXPRESS OR IMPLIED, IS MADE AS TO THE ACCURACY OF THE INFORMATION CONTAINED HEREIN, AND THE SAME IS SUBMITTED SUBJECT TO ERRORS, OMISSIONS, CHANGE OF PRICE, RENTAL OR OTHER CONDITIONS, PRIOR SALE, LEASE OR FINANCING, OR WITHDRAWAL WITHOUT NOTICE, AND OF ANY SPECIAL LISTING CONDITIONS IMPOSED BY OUR PRINCIPAL. NO WARRANTIES OR REPRESENTATIONS ARE PROPERTY OR HAZARDS CONTAINED THEREIN.