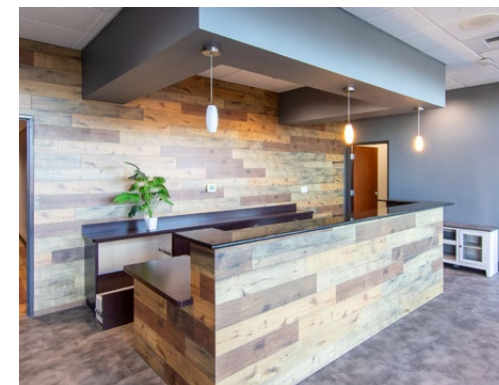


VS-350 | RETAIL SUITE | 3,014 SF

# CASCADE VILLAGE SHOPPING CENTER



In-Line Suite Next to O'Reilly Auto Parts



\$24/SF/Yr. NNN



Steven Neville, Broker  
Natalie Butler, Broker  
696 McVey Ave., Ste. 202 | Lake Oswego, OR 97034  
503.241.1222 | www.nevillebutler.com



Russell Huntamer, CCIM  
Eli Harrison, Broker  
600 SW Columbia St., Ste. 6100 | Bend, OR 97702  
541.383.2444 | www.CompassCommercial.com



**VS-350 | 3,014 SF | \$24/SF/YR. NNN**

Cascade Village Shopping Center is an approximately 367,000 square foot open-air center situated at the gateway to Bend, Oregon. Located at the confluence of Highways 20 and 97 on Bend's north end, the center has exposure to over 67,680 cars per day (ODOT 2023) and recorded 3.5 million visits in 2025, a 5.6% increase year over year and 13.1% over three years, compared to 2.9 million visits at Costco across the street.

**SUITE DESCRIPTION**

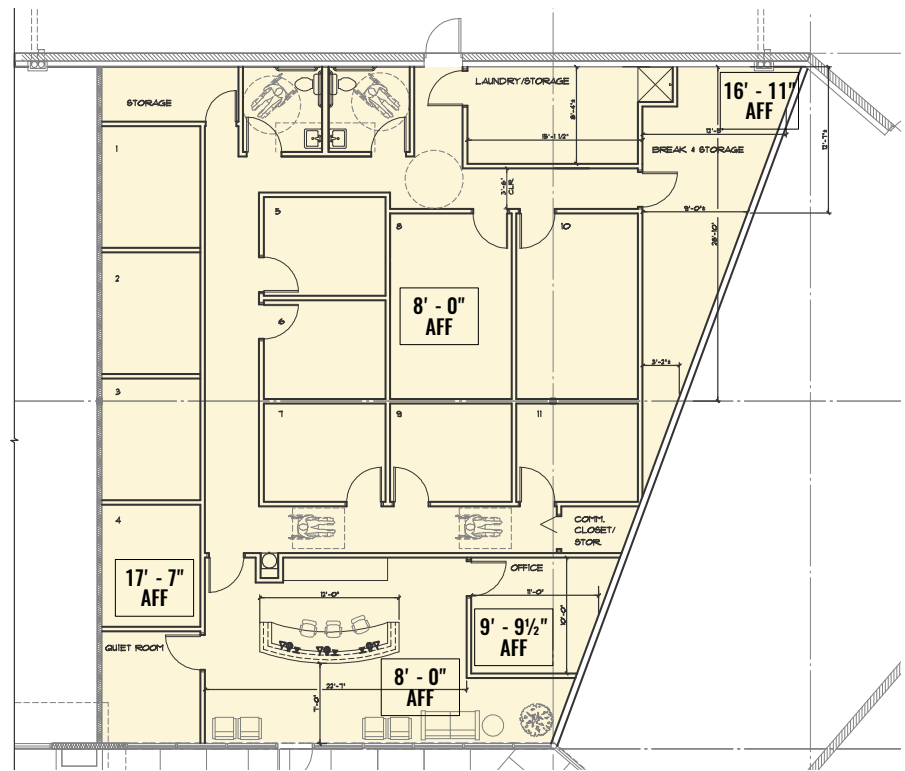
Move-in ready in-line space next to O'Reilly Auto Parts and Pretty Nails. This suite is built out with a reception, multiple offices/treatment rooms and break room making it ideal for a spa or medical/office user.

**VILLAGE PLAZA**

The nearby Village Plaza is the center's social hub offering a welcoming outdoor seating area and a charming plaza area for families and friends to gather.

**SUITE HIGHLIGHTS**

- In-line retail space in the heart of Cascade Village
- Faces Highway 20 and future Phase II portion of center
- Located next to O'Reilly Auto Parts and Pretty Nails
- Open field parking in front space
- 200-Amp electrical service
- TDS high-speed internet and gas services available
- NNN's estimated at \$9.86/SF/Yr.
- Marketing fund at \$1.00/SF/Yr.



Brokers are licensed in the state of Oregon. This information has been furnished from sources we deem reliable, but for which we assume no liability. This is an exclusive listing. The information contained herein is given in confidence with the understanding that all negotiations pertaining to this property be handled through Compass Commercial Real Estate Services. All measurements are approximate.

For More Information, Please Contact:



541.383.2444

**Russell Huntamer, CCIM**

rh@compasscommercial.com

**Eli Harrison, Broker**

eharrison@compasscommercial.com



503.241.1222

**Steven Neville, Broker**

steve@nevillebutler.com

**Natalie Butler, Broker**

natalie@nevillebutler.com