

FESTIVAL PARK PLAZA

225 RAY AVENUE



3RD FLOOR OFFICE SPACE AVAILABLE

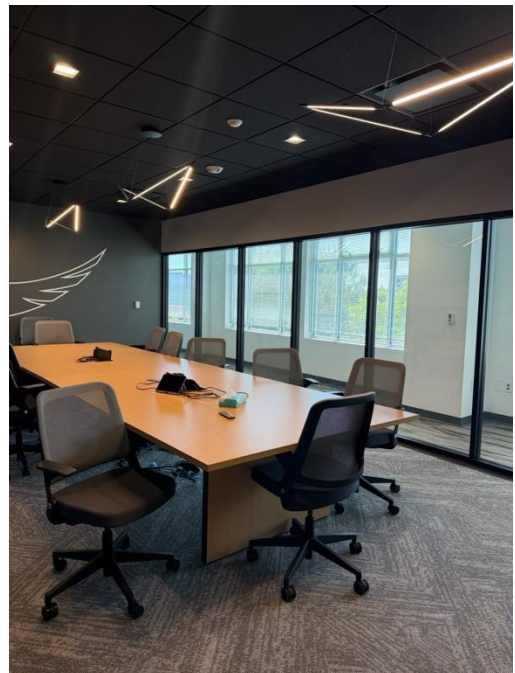
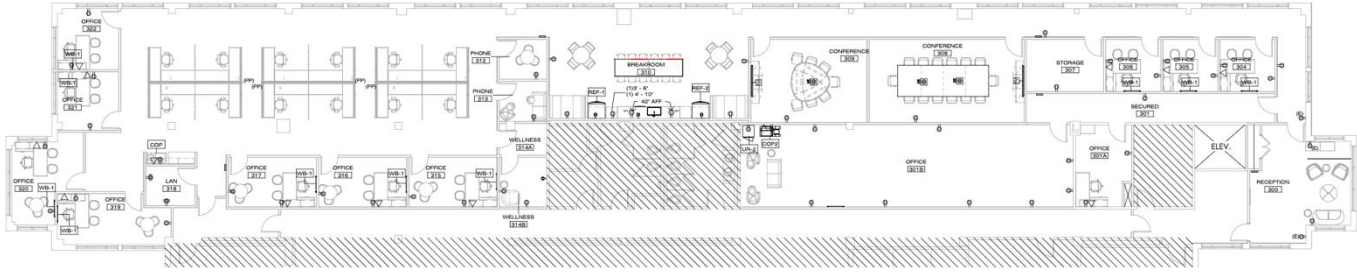


THE PROPERTY

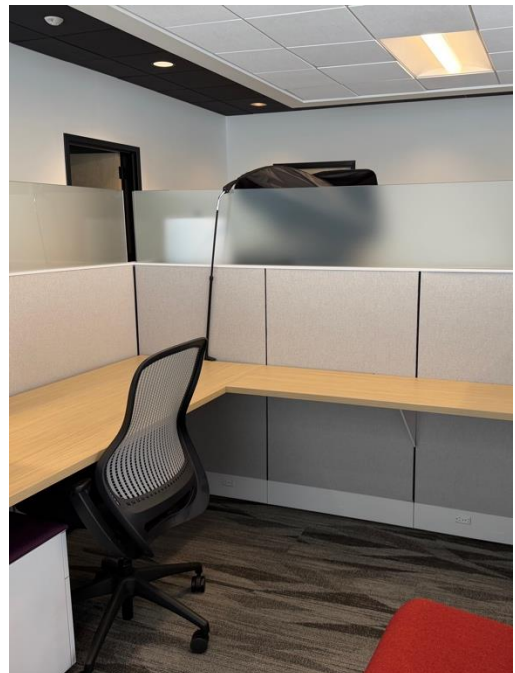
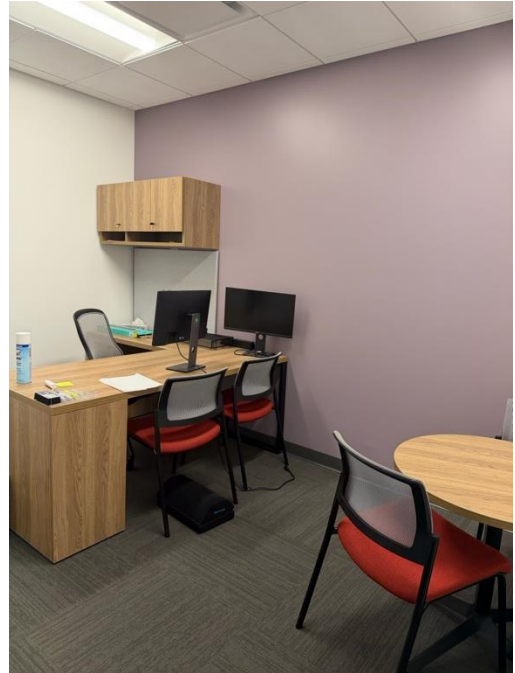
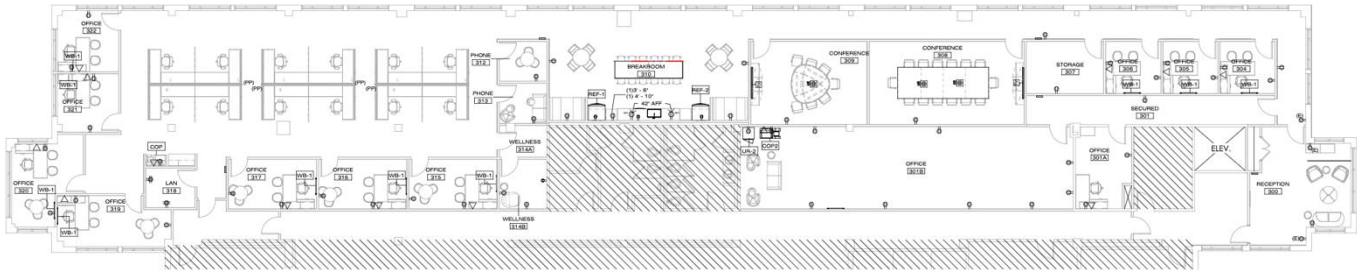
A 45,000 SF office building in downtown Fayetteville with panoramic views of Segra Stadium and Festival Park

- Located in the heart of downtown Fayetteville with 20+ local food and beverage establishments within a 5-10 minute walk
- Ample surface parking available
- Building signage visible from Segra Stadium available for anchor tenant
- Part of the Live-Work-Play Hay Street Master Development that when fully built out will consist of more than \$105M of private investment

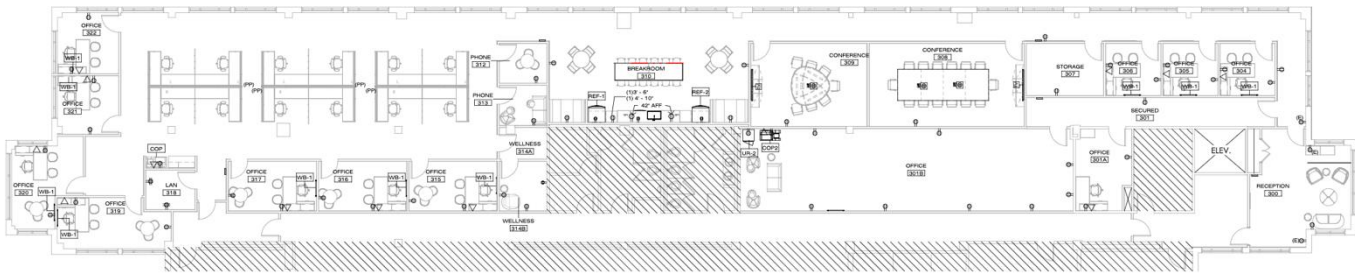
3rd Floor Suite of 7,969 RSF Overlooking Segra Stadium



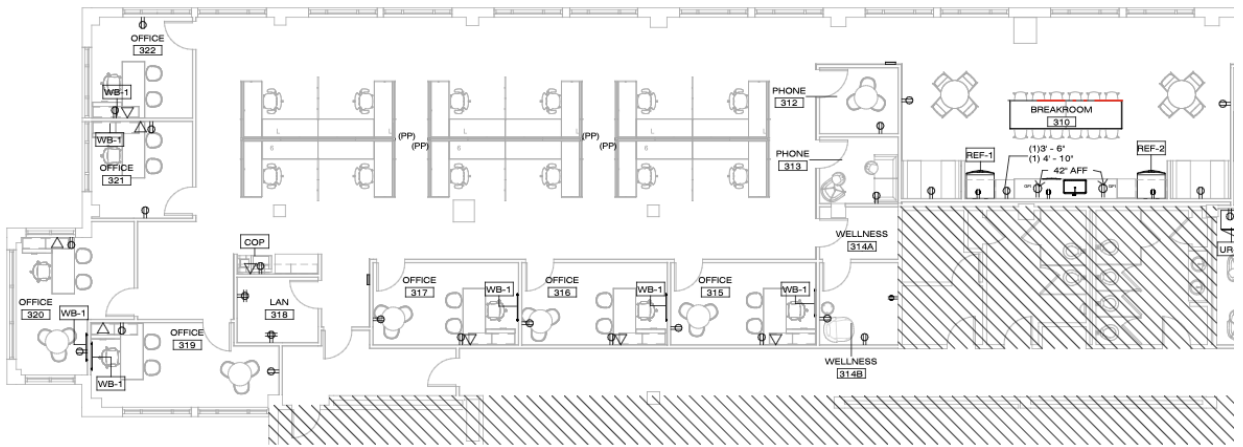
3rd Floor Suite of 7,969 RSF Overlooking Segra Stadium



3rd Floor Suite of 7,969 RSF Overlooking Segra Stadium



Left Portion of Floor Plan



Right Portion of Floor Plan

