

MID-TOWN SQUARE  
215 E. CHATHAM ST.  
CARY, NC 27511

MID-TOWN  
SQUARE 



CHRISTINA COFFEY  
ccoffey@lee-associates.com  
O 919.591.2273  
M 919.522.9915

100 Walnut Street | Cary, NC 27511 | 919-576-2500 | [lee-associates.com/raleigh](http://lee-associates.com/raleigh)

 LEE &  
ASSOCIATES  
COMMERCIAL REAL ESTATE SERVICES  
RALEIGH • DURHAM • WILMINGTON

# PROPERTY OVERVIEW

## AVAILABILITY

- Suite 110: 1,404 SF
- Lease rate: \$38.00/SF, NNN
- TICAM: \$11.55/SF

## SPACE DETAILS

- Street level retail in the heart of Downtown Cary
- Bright, open space with lots of natural light, exposed ceilings, and break area
- Covered patio area in front of store

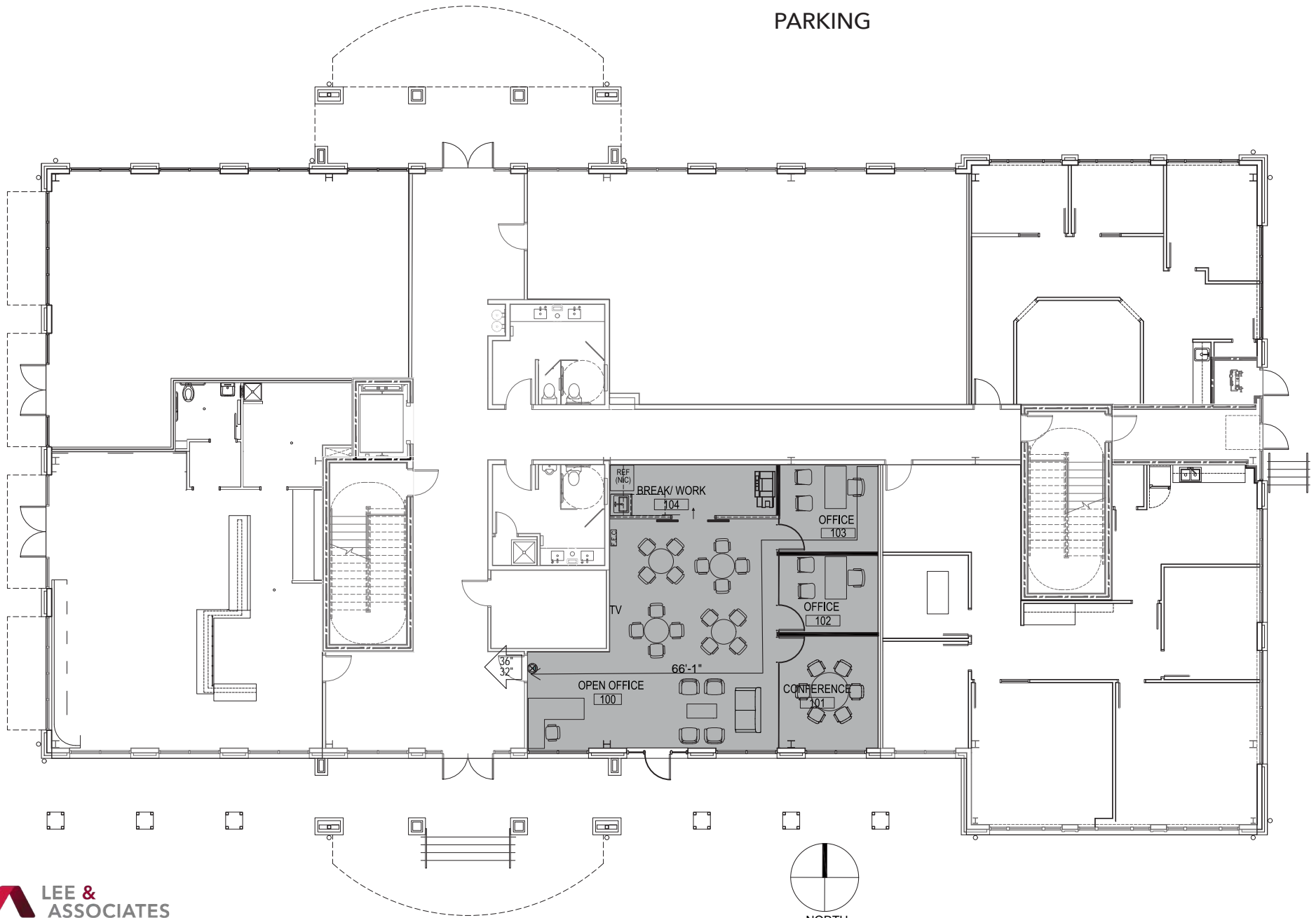
## PROPERTY HIGHLIGHTS

- On-site & public parking available
- Co-tenants include Faulisi's Caffe, SideBar, Epicurean Ristorante, Harris & Company Insurance, the Tutu School, and Bond Brothers
- Walking distance to numerous dining, hospitality and entertainment options, US Post Office, Cary Public Library, Downtown Cary Park, PageWalker Arts & History Center, and Town of Cary Municipal Offices
- Surrounded by upscale residential developments including the Meridian East Chatham, Chatham Walk, Park Station Townhomes, and The Jordan



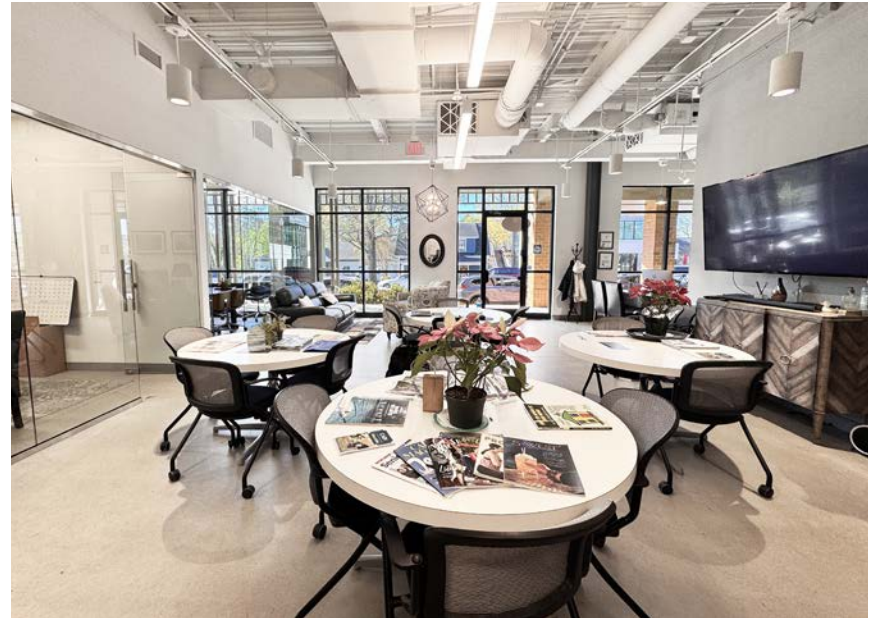
# FLOOR PLAN - SUITE 110

PARKING



MID-TOWN SQUARE • 215 E. CHATHAM ST, CARY, NC 27511

# PHOTOS - SUITE 110



MID-TOWN SQUARE • 215 E. CHATHAM ST, CARY, NC 27511

# AREA OVERVIEW

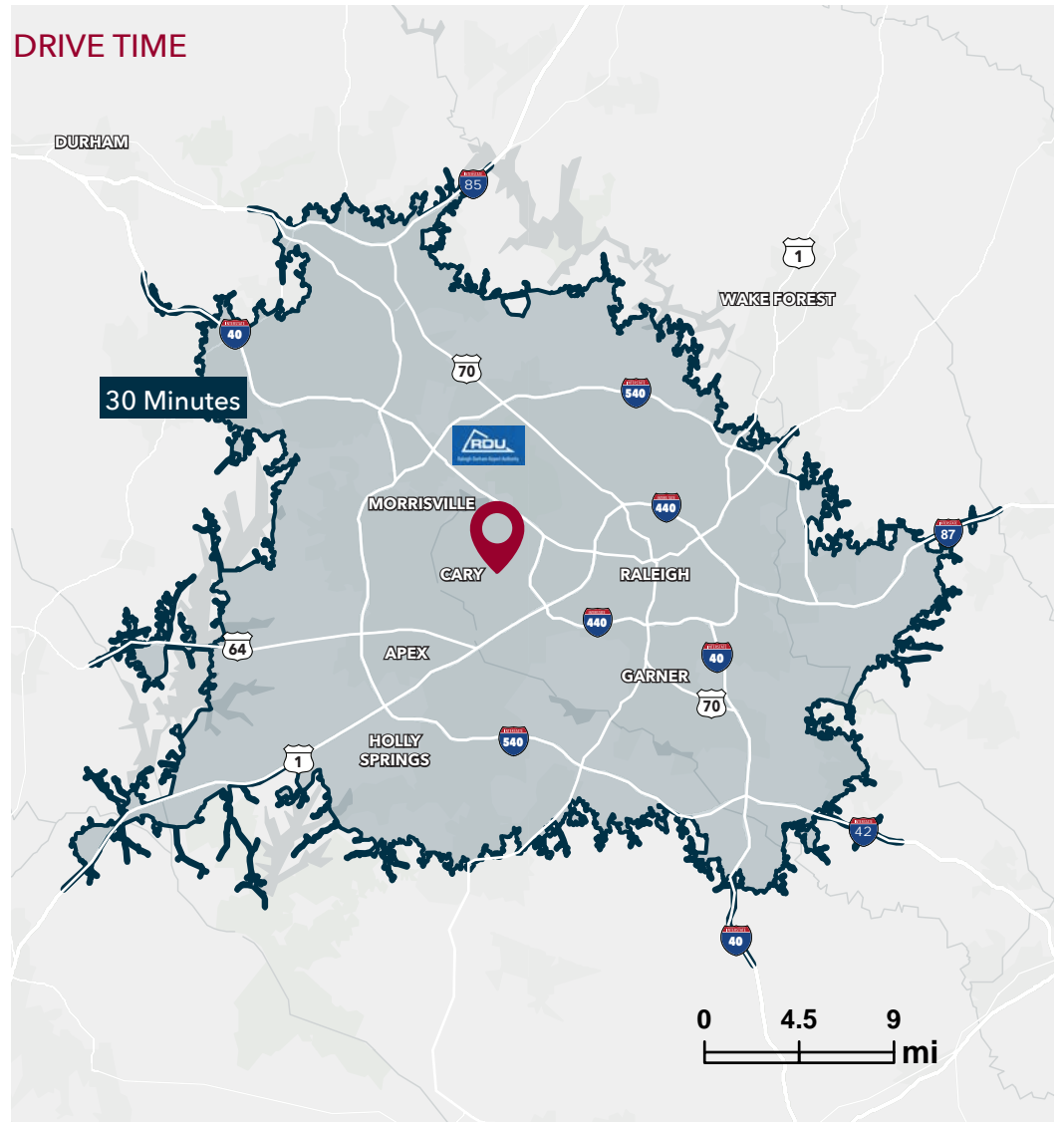


MID-TOWN SQUARE • 215 E. CHATHAM ST, CARY, NC 27511

# DEMOGRAPHICS

	1 Mile	3 Miles	5 Miles
Population	12,431	84,781	188,655
Avg. HH Income	\$116,413	\$135,342	\$147,477
No. of Businesses	771	4,563	9,992
No. of Employees	5,896	47,136	121,169
Total Daytime Population	13,120	96,809	239,261
Total Households	5,038	37,791	81,550
Average Home Value	\$482,544	\$545,056	\$606,817
Median Age	37.7	36.9	36.9
Bachelor's Degree or Greater	49.3%	63.7%	68.4%

Source: ESRI 2025



MID-TOWN SQUARE • 215 E. CHATHAM ST, CARY, NC 27511

# RESTAURANTS, RETAIL, BREWERIES AND MORE IN DOWNTOWN CARY:

## RESTAURANTS & CAFES

- |                              |                                  |
|------------------------------|----------------------------------|
| 1 Anelore's German Bakery    | 13 Hank's Downtown Dive Bar      |
| 2 Bosphorus                  | 14 Taipei 101                    |
| 3 Upper Deck Sports Pub      | 15 BREW Coffee Bar               |
| 4 Zest Sushi & Small Plates  | 16 FRESH. Local Ice Cream        |
| 5 SAAP                       | 17 Crosstown Pub & Grill         |
| 6 La Farm Bakery             | 18 MilkShake Factory             |
| 7 Kababish Cafe              | 19 Scratch Kitchen & Taproom     |
| 8 Academy Street Bistro      | 20 Big Dom's Bagel               |
| 9 Once in a Blue Moon Bakery | 21 Faulisi Caffè                 |
| 10 Serendipity Deli          | 22 Pro's Epicurean Market & Cafe |
| 11 Esteamed Coffee           | 23 MC Restaurant                 |
| 12 Di Fara Pizza Tavern      |                                  |

## BREWERIES & BARS

- |                               |                                      |
|-------------------------------|--------------------------------------|
| 24 Triangle Beer Co.          | 29 The Walk Up                       |
| 25 Side Bar                   | 30 Bull City Cider Works             |
| 26 Bond Brothers              | 31 RBF, Your Authentic Champagne Bar |
| 27 Chatham Street Wine        | 32 The Cotton House                  |
| 28 Pharmacy Bottle + Beverage |                                      |

## FITNESS & RECREATION

- |                                      |                       |
|--------------------------------------|-----------------------|
| 33 Aradia Fitness Cary               | 36 Heater Park        |
| 34 Herbert C. Young Community Center | 37 Downtown Cary Park |
| 35 Ignium Strength                   |                       |

## ENTERTAINMENT & VENUES

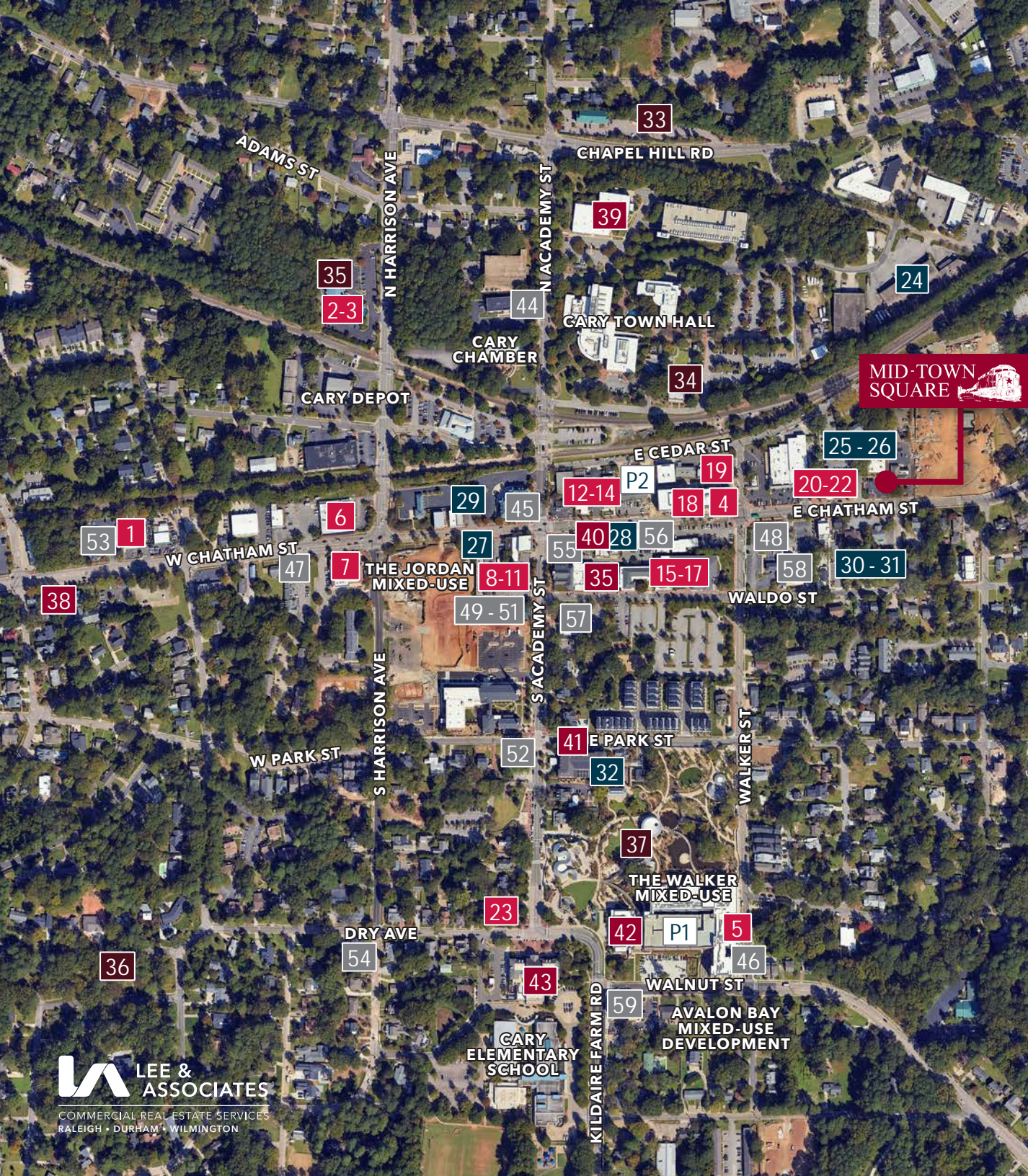
- |                              |                          |
|------------------------------|--------------------------|
| 38 The Matthews House        | 41 The Mayton Inn        |
| 39 Page - Walker Arts Center | 42 Cary Regional Library |
| 40 The Cary Theater          | 43 Cary Arts Center      |

## RETAIL

- |                           |                               |
|---------------------------|-------------------------------|
| 44 First Bank             | 52 Lana Addison Bridal        |
| 45 Fidelity Bank          | 53 Chocolate Smiles           |
| 46 The Now                | 54 Stonehaven Jewelry Gallery |
| 47 Cary Florist           | 55 Kitchen & Bath Galleries   |
| 48 Cary Farmers Market    | 56 Johnson's Jewelers         |
| 49 Peak Olive Oil Company | 57 US Postal Service          |
| 50 Warm 'n Fuzzy          | 58 The Perfect Piece          |
| 51 Vintage Vogue          | 59 Towne Bank                 |

## PARKING

- |                    |                       |
|--------------------|-----------------------|
| P1 The Walker Deck | P2 The Cedar St. Deck |
|--------------------|-----------------------|



# CARY QUICK FACTS

Over 190,000  
people call Cary  
home

#5 Best Place to  
Live in the US  
(US News & World Report,  
June 2025)

Cary's  
unemployment  
rate is 2.8%  
(as of 12/31/25)

Top 5% for Job  
Market Strength  
(US News & World Report,  
June 2025)

Cary is the  
7th largest  
municipality in  
North Carolina

#6 Safest City  
in America  
(Forbes, February 2025)

Cary has more  
than 80 miles of  
greenways and  
30 parks

72% of residents  
hold a Bachelor's  
degree or higher



Presented by:

Christina Coffey

Vice President

[ccoffey@lee-associates.com](mailto:ccoffey@lee-associates.com)

O 919.591.2273

M 919.522.9915



COMMERCIAL REAL ESTATE SERVICES  
RALEIGH • DURHAM • WILMINGTON

All information furnished regarding property for sale, rental or financing is from sources deemed reliable, but no warranty or representation is made to the accuracy thereof and same is submitted to errors, omissions, change of price, rental or other conditions prior to sale, lease or financing or withdrawal without notice. No liability of any kind is to be imposed on the broker herein.

100 Walnut Street | Cary, NC 27511 | 919-576-2500 | [lee-associates.com/raleigh](http://lee-associates.com/raleigh)

