

# CATALINA PLACE, in El Dorado Business Campus

3015 E. GOLDSTONE DRIVE, MERIDIAN, ID 83642



## PROPERTY FEATURES

BLDG TYPE: Class A Office Space  
BLDG SIZE: 70,554 Square Feet  
FLOORS: Two Floors  
PARKING: Generous Allowance  
LEASE TYPE: Full Service, Less Tenant Janitorial  
ZONING: CC

## BUILDING HIGHLIGHTS

- New building in El Dorado Park
- Ready for tenant design and build out
- Fiber ready building
- Eagle Road exposure and signage opportunity
- Landlord will provide test fit plan
- Excellent access from traffic controlled intersection on Eagle Road
- Centrally located in the Boise Valley, I-84 (Exit 46) less than one mile

## LOCATED



**Video Tour Available**  
**Contact Us**

**Call: 208-322-7300**

[WWW.SUNDANCECO.COM](http://WWW.SUNDANCECO.COM)



# CATALINA PLACE, in El Dorado Business Campus

3015 E. GOLDSTONE DRIVE, MERIDIAN, ID 83642



**Call: 208-322-7300**

[WWW.SUNDANCECO.COM](http://WWW.SUNDANCECO.COM)



# CATALINA PLACE, in El Dorado Business Campus

3015 E. GOLDSTONE DRIVE, MERIDIAN, ID 83642



**Call: 208-322-7300**

[WWW.SUNDANCECO.COM](http://WWW.SUNDANCECO.COM)



# CATALINA PLACE, in El Dorado Business Campus

3015 E. GOLDSTONE DRIVE, MERIDIAN, ID 83642



---

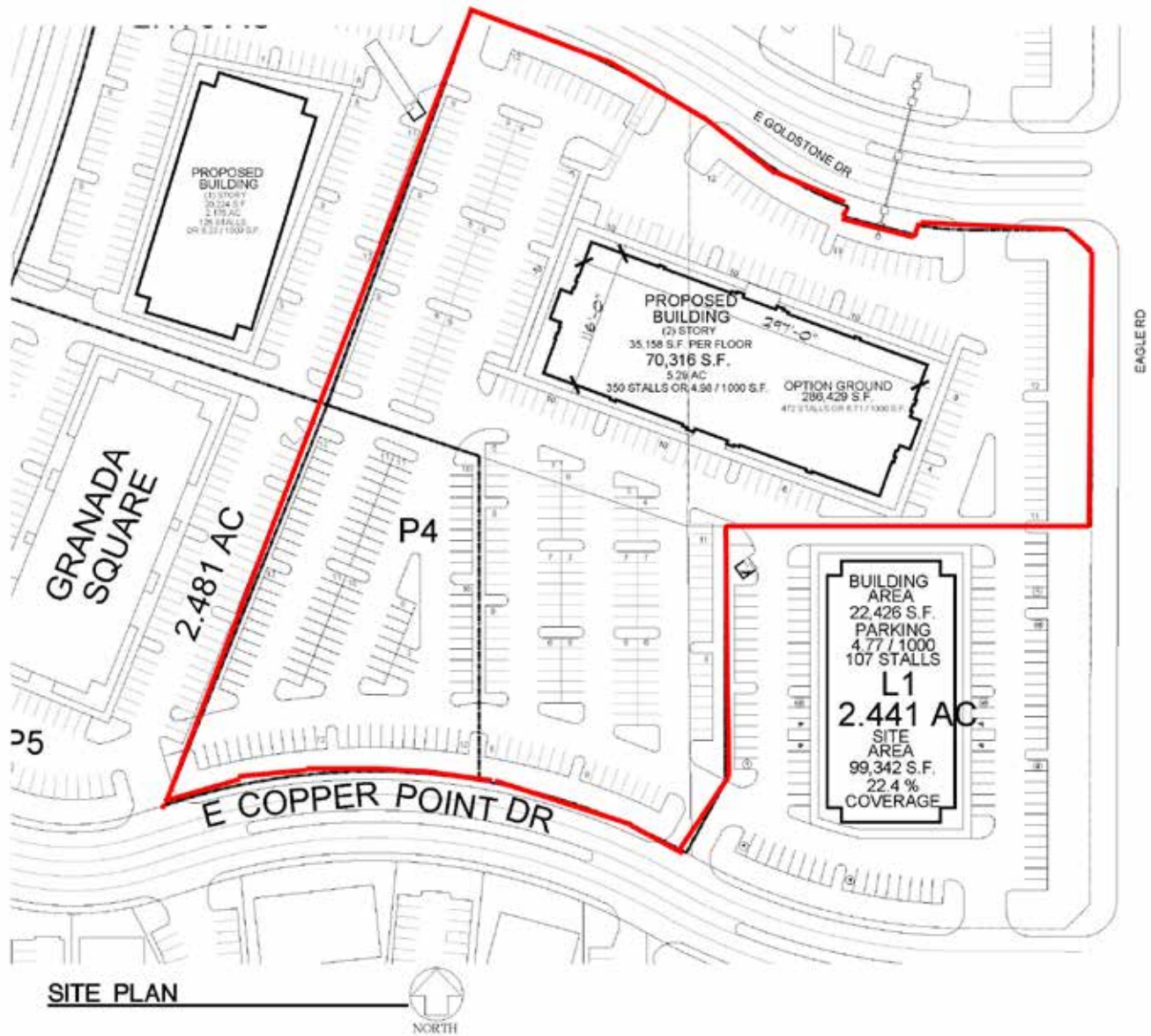
**Call: 208-322-7300**

[WWW.SUNDANCECO.COM](http://WWW.SUNDANCECO.COM)



# CATALINA PLACE, in El Dorado Business Campus

3015 E. GOLDSTONE DRIVE, MERIDIAN, ID 83642



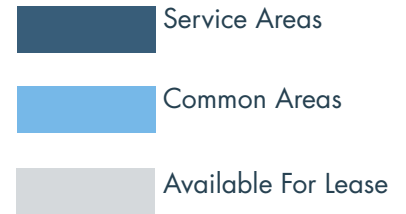
**Call: 208-322-7300**

[WWW.SUNDANCECO.COM](http://WWW.SUNDANCECO.COM)



# CATALINA PLACE, in El Dorado Business Campus

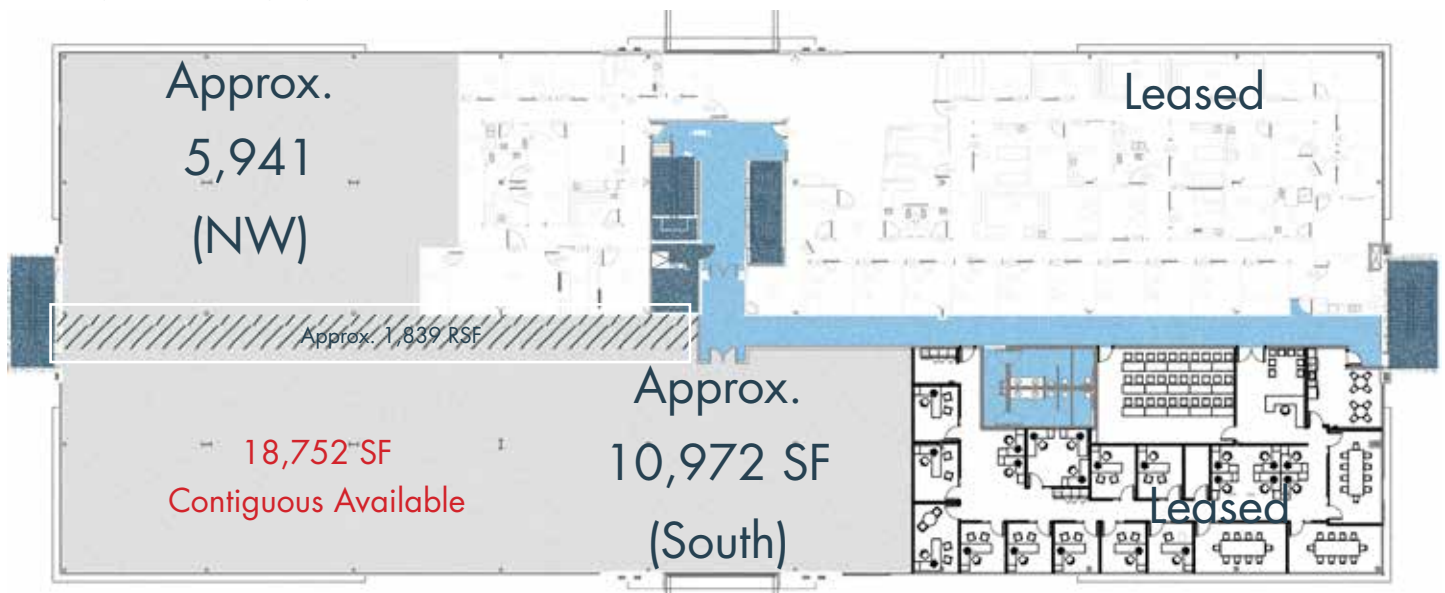
3015 E. GOLDSTONE DRIVE, MERIDIAN, ID 83642



## FIRST FLOOR



## SECOND FLOOR



**Call: 208-322-7300**

[WWW.SUNDANCECO.COM](http://WWW.SUNDANCECO.COM)



# CATALINA PLACE, in El Dorado Business Campus

3015 E. GOLDSTONE DRIVE, MERIDIAN, ID 83642

Silverstone and El Dorado Parks provide abundant access points which substantially affects ease of access to and from your business. Our developments are nearly completely built out and you will find excellent internal traffic flow.

## EL DORADO BUSINESS PARK

Eight (8) Traffic Outlets

One (1) Traffic Light Controlled

## SILVERSTONE PARK

Twelve (12) Traffic Outlets

Two (2) Traffic Light Controlled



**Call: 208-322-7300**

[WWW.SUNDANCECO.COM](http://WWW.SUNDANCECO.COM)



# CATALINA PLACE, in El Dorado Business Campus

3015 E. GOLDSTONE DRIVE, MERIDIAN, ID 83642

## PROPERTY SUMMARY

The recently completed Catalina building offers customizable space in a convenient, easily accessible location in the center of the Boise Valley.

Located in the City of Meridian, in the El Dorado Business Campus, ½ mile south of Interstate 84 (exit 46). The Catalina Building is sited at the signalized intersection of Goldstone Way and Eagle Road, a major north-south commercial arterial in the region.

The El Dorado Business Campus features dual redundancy fiber to ensure uninterrupted, reliable connections. As well as close proximity to Valley Region Transit bus routes and Commute Ride-Club van pool.

The site's central location, with a population of approximately 200,000 within a five-mile radius, ensures a wide variety of amenities within a close vicinity.

Please contact us for more information on this location or additional properties owned and managed by Sundance in the immediate area.

---

**Call: 208-322-7300**

[WWW.SUNDANCECO.COM](http://WWW.SUNDANCECO.COM)

