



LEASE

Blake Park

1816 59TH ST W

Bradenton, FL 34209

PRESENTED BY:

GAIL BOWDEN

O: 941.223.1525

C: 941.223.1525

gail.bowden@svn.com

BEN GRAHAM

O: 941.928.1546

C: 941.928.1546

ben.graham@svn.com

PROPERTY SUMMARY



OFFERING SUMMARY

LEASE RATE:	\$19 SF/yr (NNN)
BUILDING SIZE:	67,672 SF
AVAILABLE SF:	2,255 - 7,189 SF
LOT SIZE:	5.8 Acres
ZONING:	BR_P
MARKET:	Bradenton
SUBMARKET:	Sarasota
TRAFFIC COUNT:	14,000
VIDEO:	View Here
VIRTUAL TOUR:	View Here

PROPERTY HIGHLIGHTS

- Premier multi-tenant medical, professional, and retail property
- Located directly adjacent to HCA Florida Blake Hospital (383-bed Level II Trauma Center)
- Positioned along the highly trafficked 59th Street West corridor with excellent visibility
- Variety of suite sizes to accommodate medical, office, and service-oriented users
- Strong tenant mix including medical offices, private offices, and retail users
- On-site amenities include two restaurants and a first-class fitness facility
- Recently upgraded exterior enhancing curb appeal and overall property presence
- Move-in ready suites available with newly updated interiors
- Ample parking for tenants and visitors
- Easy access from major roadways, supporting strong patient and customer convenience
- Located within a high-demand, established medical corridor with excellent tenant synergy

GAIL BOWDEN

O: 941.223.1525 | C: 941.223.1525
gail.bowden@svn.com

BEN GRAHAM

O: 941.928.1546 | C: 941.928.1546
ben.graham@svn.com

PROPERTY DESCRIPTION



PROPERTY DESCRIPTION

Blake Park is a well-established, multi-tenant professional, medical, and retail property ideally located along 59th Street West, directly adjacent to HCA Florida Blake Hospital. Positioned within a premier medical and commercial corridor, the property offers an exceptional environment for healthcare providers, professional users, and service-oriented retail.

The property features a diverse mix of suite sizes to accommodate a wide range of users—from private offices to fully built-out medical suites. While the majority of tenants are medical, Blake Park also offers a strong retail component, including two on-site restaurants and a first-class fitness facility, creating added convenience and daily traffic for tenants and visitors alike.

Ownership has recently completed a significant exterior renovation, enhancing the property's curb appeal and overall presence. In addition, several suites have been newly updated and are move-in ready, allowing for immediate occupancy with minimal downtime.

Blake Park presents a unique opportunity to establish your business in a high-demand, hospital-adjacent location with built-in amenities, strong tenant synergy, and excellent accessibility from all directions.

LOCATION DESCRIPTION

Strategically positioned along the highly traveled 59th Street West corridor, Blake Park offers exceptional visibility and accessibility in the heart of a thriving medical and commercial hub. Located immediately adjacent to HCA Florida Blake Hospital—a 383-bed Level II Trauma Center—this property is ideally suited for medical and professional users seeking proximity to a major healthcare anchor.

GAIL BOWDEN

O: 941.223.1525 | C: 941.223.1525
gail.bowden@svn.com

BEN GRAHAM

O: 941.928.1546 | C: 941.928.1546
ben.graham@svn.com

PROPERTY DETAILS

LEASE RATE	\$19 SF/YR
-------------------	-------------------

LOCATION INFORMATION

BUILDING NAME	Blake Park
STREET ADDRESS	1816 59th ST W
CITY, STATE, ZIP	Bradenton, FL 34209
COUNTY	Manatee
MARKET	Bradenton
SUB-MARKET	Sarasota
CROSS-STREETS	59th St W & 17th Ave W
TOWNSHIP	34S
RANGE	17E
SECTION	32
SIDE OF THE STREET	West
SIGNAL INTERSECTION	No
ROAD TYPE	Paved
MARKET TYPE	Large
NEAREST HIGHWAY	0.9 Miles to SR 64
NEAREST AIRPORT	10.4 Miles to Sarasota Bradenton International Airport

PROPERTY INFORMATION

PROPERTY TYPE	Office
PROPERTY SUBTYPE	Medical
ZONING	BR_P
LOT SIZE	5.8 Acres
APN #	39384-5005-7
LOT FRONTAGE	375 ft
LOT DEPTH	580 ft
CORNER PROPERTY	No
TRAFFIC COUNT	14000
TRAFFIC COUNT STREET	59th ST W
WATERFRONT	No
POWER	Yes

GAIL BOWDEN

O: 941.223.1525 | C: 941.223.1525
gail.bowden@svn.com

BEN GRAHAM

O: 941.928.1546 | C: 941.928.1546
ben.graham@svn.com

PROPERTY DETAILS

LEASE RATE	\$19 SF/YR
-------------------	-------------------

BUILDING INFORMATION

BUILDING SIZE	67,672 SF
NOI	\$0.00
CAP RATE	0.0
BUILDING CLASS	A
TENANCY	Multiple
NUMBER OF FLOORS	1
YEAR BUILT	1985
CONSTRUCTION STATUS	Existing
FRAMING	Concrete
CONDITION	Excellent
ROOF	BAR JOIST RIGID, BUILTUP TAR & GRAVEL
FREE STANDING	Yes
NUMBER OF BUILDINGS	5
WALLS	DRYWALL
FOUNDATION	Slab
EXTERIOR WALLS	CONC BLOCK STUCCO

PARKING & TRANSPORTATION

STREET PARKING	No
PARKING TYPE	Surface
PARKING RATIO	4.8
NUMBER OF PARKING SPACES	325

UTILITIES & AMENITIES

SECURITY GUARD	No
HANDICAP ACCESS	Yes
ELEVATORS	0
FREIGHT ELEVATOR	No
NUMBER OF ELEVATORS	0
NUMBER OF ESCALATORS	0
CENTRAL HVAC	Yes
LEED CERTIFIED	No
LANDSCAPING	Mature

GAIL BOWDEN

O: 941.223.1525 | C: 941.223.1525
gail.bowden@svn.com

BEN GRAHAM

O: 941.928.1546 | C: 941.928.1546
ben.graham@svn.com

LEASE SPACES



LEASE INFORMATION

LEASE TYPE:	NNN	LEASE TERM:	Negotiable
TOTAL SPACE:	2,255 - 7,189 SF	LEASE RATE:	\$19 SF/yr

AVAILABLE SPACES

SUITE	TENANT	SIZE (SF)	LEASE TYPE	LEASE RATE
5959	Available	2,255 SF	NNN	\$19.00 SF/yr
1894	Available	7,189 SF	NNN	\$19.00 SF/yr
1886	Available	7,186 SF	NNN	\$19.00 SF/yr

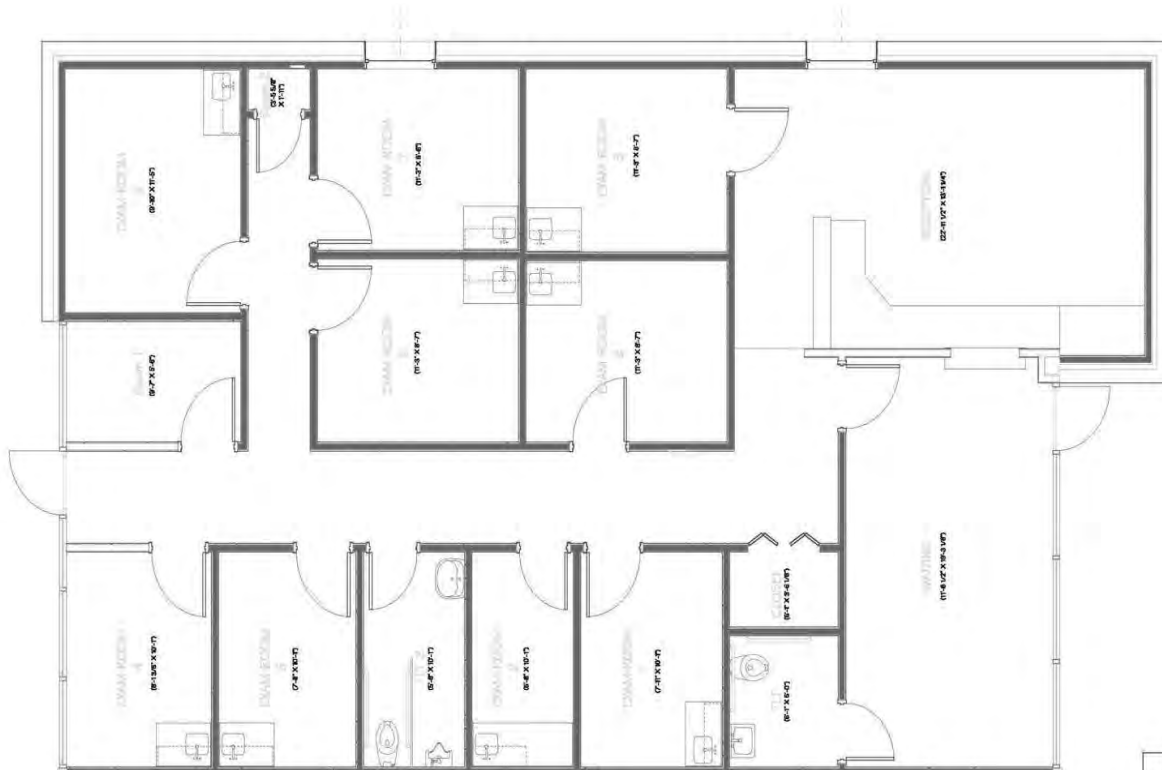
GAIL BOWDEN

O: 941.223.1525 | C: 941.223.1525
gail.bowden@svn.com

BEN GRAHAM

O: 941.928.1546 | C: 941.928.1546
ben.graham@svn.com

SUITE 5959



BUILDING 'J' - 5959 59th St, W.
Area (BOMA) ± 2,044 SQ. FT.

1819 Main Street
Bldg 509
Bradenton, FL 34206
Phone: 941.223.1525
www.svncommercial.com

AX-01
3-18-2020
CMC/E GAC/AM/2020/2
12/26/2022
DAVID ST. JEFFORD

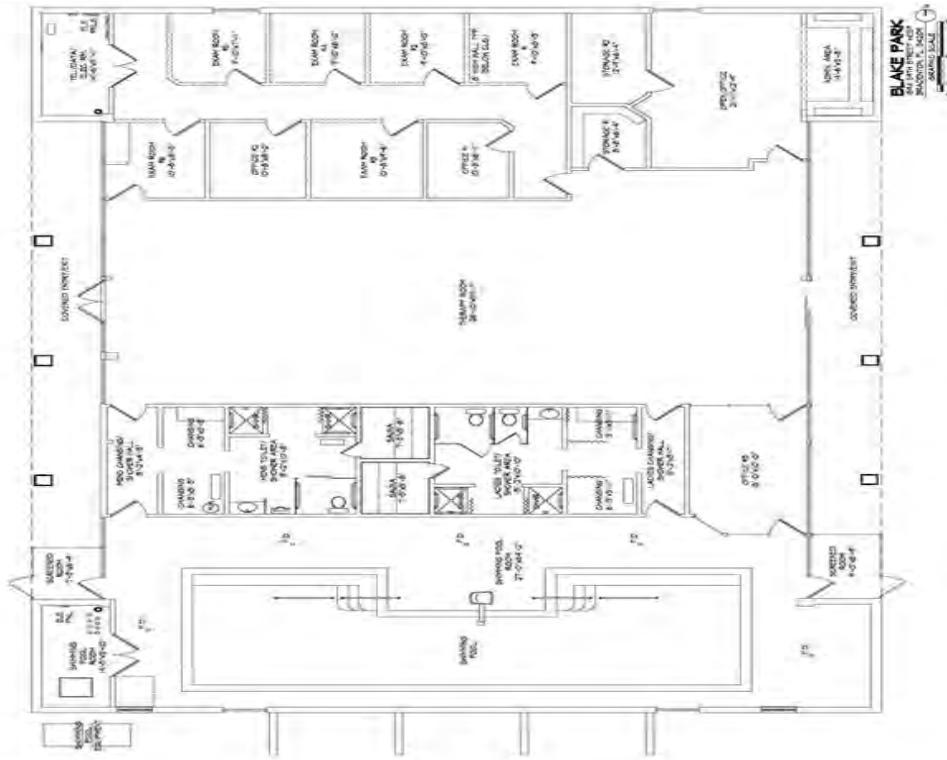
LEASE INFORMATION

LEASE TYPE:	NNN
TOTAL SPACE:	2,255 SQ FT
LEASE TERM:	Negotiable
LEASE RATE:	\$19.00 SF/yr
DESCRIPTION:	Medical Suite

GAIL BOWDEN
O: 941.223.1525 | C: 941.223.1525
gail.bowden@svn.com

BEN GRAHAM
O: 941.928.1546 | C: 941.928.1546
ben.graham@svn.com

SUITE 1894



LEASE INFORMATION

LEASE TYPE:	NNN
TOTAL SPACE:	7,186 SQ FT
LEASE TERM:	Negotiable
LEASE RATE:	\$19.00 SF/yr
MATTERPORT:	https://my.matterport.com/show/?m=aKJvp7eGWoL&brand=0

GAIL BOWDEN

O: 941.223.1525 | C: 941.223.1525
gail.bowden@svn.com

BEN GRAHAM

O: 941.928.1546 | C: 941.928.1546
ben.graham@svn.com

SUITE 1886



LEASE INFORMATION

LEASE TYPE:	NNN
TOTAL SPACE:	7,186
LEASE TERM:	Negotiable
LEASE RATE:	\$19.00 SF/yr

GAIL BOWDEN

O: 941.223.1525 | C: 941.223.1525
gail.bowden@svn.com

BEN GRAHAM

O: 941.928.1546 | C: 941.928.1546
ben.graham@svn.com

AERIAL MAP



GAIL BOWDEN

O: 941.223.1525 | C: 941.223.1525
gail.bowden@svn.com

BEN GRAHAM

O: 941.928.1546 | C: 941.928.1546
ben.graham@svn.com

AERIAL MAP



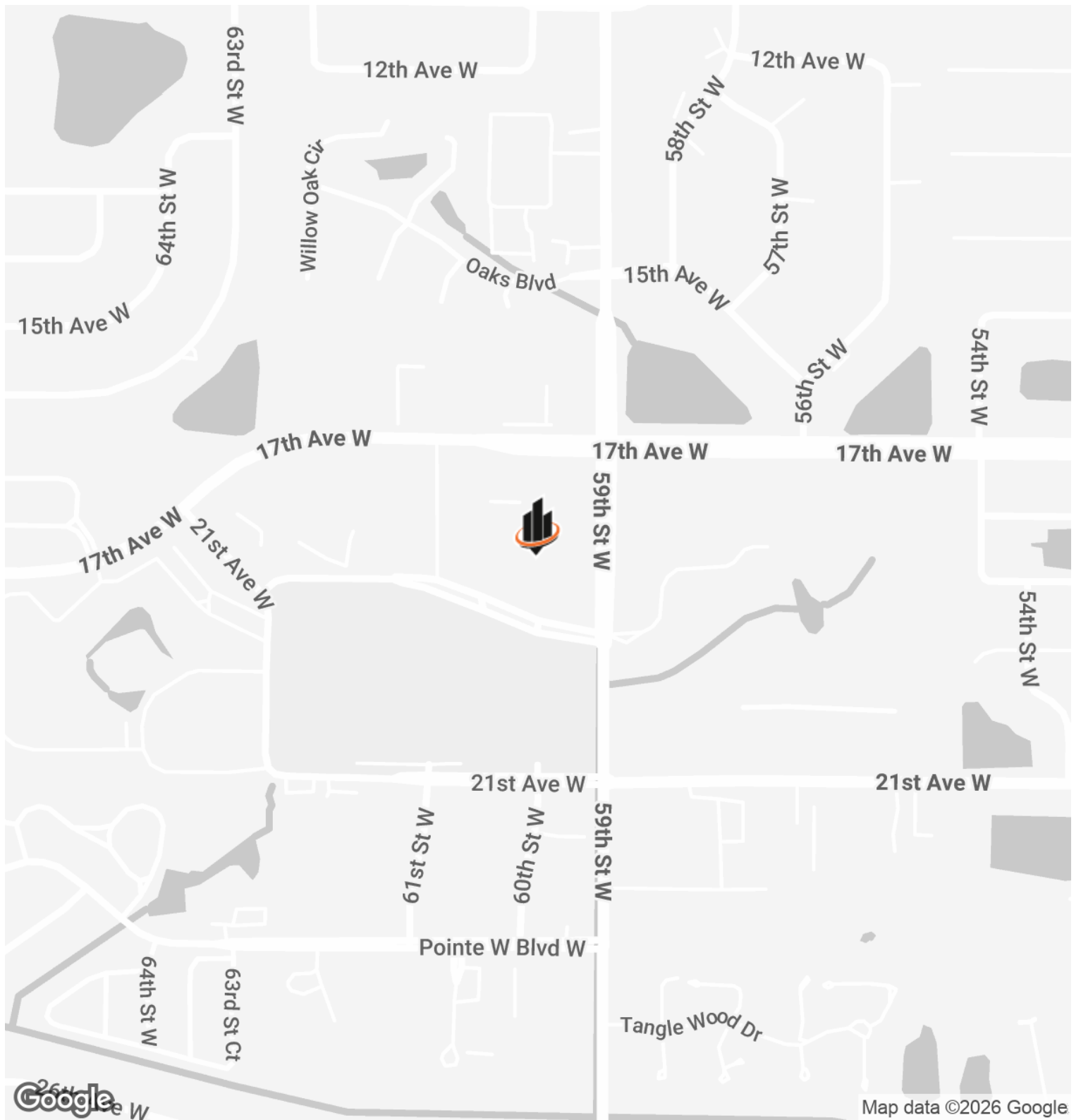
GAIL BOWDEN

O: 941.223.1525 | C: 941.223.1525
gail.bowden@svn.com

BEN GRAHAM

O: 941.928.1546 | C: 941.928.1546
ben.graham@svn.com

LOCATION MAP



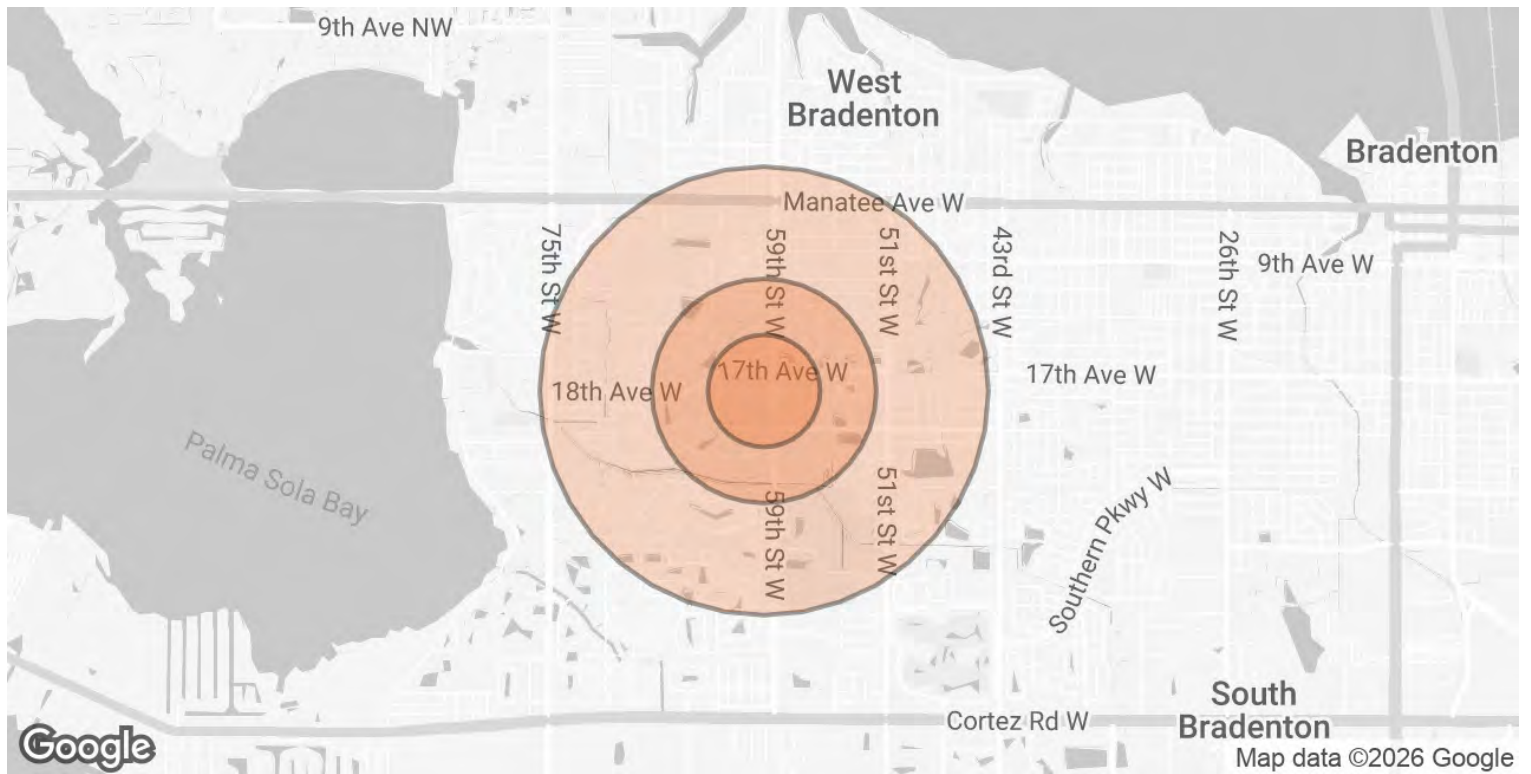
GAIL BOWDEN

O: 941.223.1525 | C: 941.223.1525
gail.bowden@svn.com

BEN GRAHAM

O: 941.928.1546 | C: 941.928.1546
ben.graham@svn.com

DEMOGRAPHICS MAP & REPORT



POPULATION

	0.25 MILES	0.5 MILES	1 MILE
TOTAL POPULATION	859	3,064	11,959
AVERAGE AGE	67.7	62.3	58.5
AVERAGE AGE (MALE)	60.4	55.8	54.7
AVERAGE AGE (FEMALE)	71.3	66.4	61.2

HOUSEHOLDS & INCOME

	0.25 MILES	0.5 MILES	1 MILE
TOTAL HOUSEHOLDS	458	1,523	5,996
# OF PERSONS PER HH	1.9	2.0	2.0
AVERAGE HH INCOME	\$51,774	\$54,983	\$56,967
AVERAGE HOUSE VALUE	\$248,973	\$244,313	\$228,933

2020 American Community Survey (ACS)

GAIL BOWDEN

O: 941.223.1525 | C: 941.223.1525
gail.bowden@svn.com

BEN GRAHAM

O: 941.928.1546 | C: 941.928.1546
ben.graham@svn.com



GAIL BOWDEN

Senior Investment Advisor

gail.bowden@svn.com

Direct: **941.223.1525** | Cell: **941.223.1525**

PROFESSIONAL BACKGROUND

Gail Bowden, Senior Investment Advisor and founder of Global Medical Team, brings a unique blend of strategic creativity and expertise to the SVN Commercial Advisory Group team. Drawing on over thirty years of experience, Bowden is well known for her business ingenuity and ability to navigate the complexities of venture capital, project finance, construction, and development. Her project list is extensive, as well as her list of accomplishments as an expert and industry leader.

SVN Certified Specialist in Office, Self-Storage, Industrial, and Retail

Real Estate Forum's Women of Influence 2020 & 2016

SVN's prestigious honor "Partners Circle" 2022, 2021, 2019, 2015 & 2014

MS&C Commercial Presidents Circle, Top Team Outstanding Performance 2018 & 2017

Four-time Top CRE Advisor; Top Producer; Top Sale Transaction

Ranked #11 worldwide & #2 in Florida with SVN 2019

Ranked #3 worldwide & #1 in Florida with SVN 2015

Ms. Bowden is well-known for closing complex and varied commercial investment projects, specializing in medical office, self-storage, retail, and industrial properties. Gail's propensity for guiding clients to appropriate financing and her skill for identifying the most suitable investors for each deal has contributed to her career sales total of over \$600 million.

From contract to closing, Gail handles each client with exceptional care, ensuring that every transaction element is presented clearly and logically. Known for thorough research, stamina, and patience, Gail's ability to communicate clearly with all sides in any negotiation has established her as a true professional. A passion for travel has enhanced Gail's ability to develop and cultivate long-standing relationships with real estate and development professionals worldwide.

RECENT TRANSACTIONS

- LEASED | Orlando, FL (Lake Nona area) | Medical Office Building | 2,229 sf | 10 Year Lease
- LEASED | Bradenton, FL | Medical Office Building | 13,122 sf | 5 Year Lease

SVN | Commercial Advisory Group

1626 Ringling Boulevard, Suite 500

Sarasota, FL 34236

941.387.1200

GAIL BOWDEN

O: 941.223.1525 | C: 941.223.1525

gail.bowden@svn.com

BEN GRAHAM

O: 941.928.1546 | C: 941.928.1546

ben.graham@svn.com



BEN GRAHAM

Senior Advisor

ben.graham@svn.com

Direct: **941.928.1546** | Cell: **941.928.1546**

PROFESSIONAL BACKGROUND

As a United States Marine Corps Veteran, Ben learned the value of honor, courage, and commitment early in life and these core values have influenced all aspects of his business career. His passion for client care and providing the highest levels of service create a genuine trust in his business relationships.

In addition to his service in the military, Ben has excelled in several of Florida's top firms. The Ritz Carlton, PGA Fed-Ex Tour VIP - Sponsorship Sales, Executive Level Advertising Sales and was consistently in the Top Sales Agents for Michael Saunders & Co.

His honest and professional approach to the clientele he works with creates a sense of confidence that translates into continued business and mutually beneficial relationships.

Travel, friends, volunteering, golf, beaches, and musical entertainment are a few of his favorite pastimes. Living in Southwest Florida for the past 21 years, and working throughout the state of Florida, gives his clients a unique advantage and understanding of the Florida market.

SVN | Commercial Advisory Group

1626 Ringling Boulevard, Suite 500
Sarasota, FL 34236
941.387.1200

GAIL BOWDEN

O: 941.223.1525 | C: 941.223.1525
gail.bowden@svn.com

BEN GRAHAM

O: 941.928.1546 | C: 941.928.1546
ben.graham@svn.com



PRESENTED BY:

Gail Bowden

O: 941.223.1525

C: 941.223.1525

gail.bowden@svn.com

Ben Graham

O: 941.928.1546

C: 941.928.1546

ben.graham@svn.com