

# FOR LEASE | RANKIN BUSINESS PARK

1220-1270 RANKIN STREET



**1220-1270 RANKIN STREET**  
**TROY, MI 48083**

## PROPERTY HIGHLIGHTS:

- Rankin Business Park Under New Management
- 1,287 - 10,000 SF available
- Industrial & Office suites
- 16' - 18' clear height
- Docks and grade level doors
- Zoned Light Industrial
- Ample on site parking

**\$ LEASE RATE: \$11.95 SF/YR (MG)**

The information provided herein along with any attachment(s) was obtained from sources believed to be reliable, however, Friedman Real Estate makes no guarantees, warranties, or representations as to the completeness or accuracy of such information and legal counsel is advised. All information provided is subject to verification and no liability for reliance on such information or errors or omissions is assumed. The presentation of this property is submitted subject to errors, omissions, change of price or conditions, prior sale or lease, or withdrawal without notice. Copyright © 2026 Friedman Real Estate. All rights reserved.

FOR MORE INFORMATION PLEASE CONTACT:



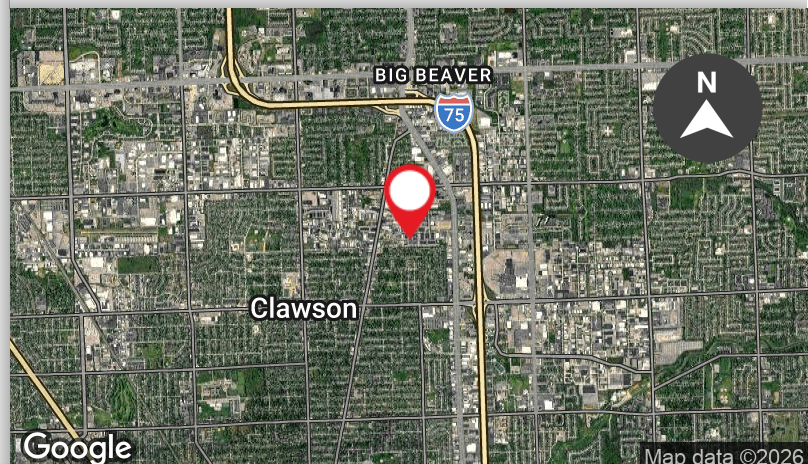
**CHARLIE ELIAS**  
Associate, Brokerage Services  
[charlie.elias@freg.com](mailto:charlie.elias@freg.com)



**ZACH CUMMINGS**  
Senior Associate, Brokerage Services  
[zach.cummings@freg.com](mailto:zach.cummings@freg.com)

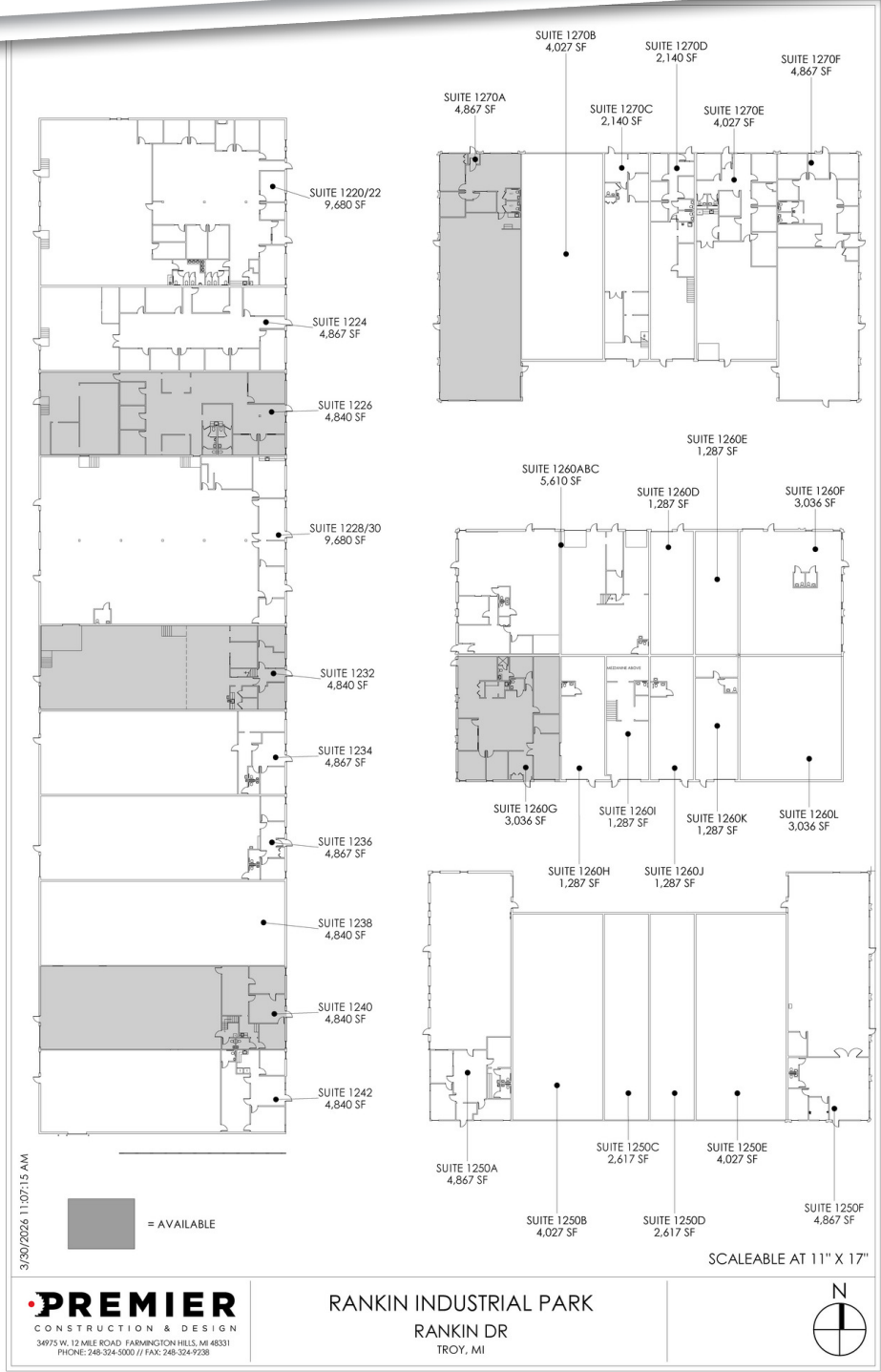
**248.848.4117**

**eCODE 804**



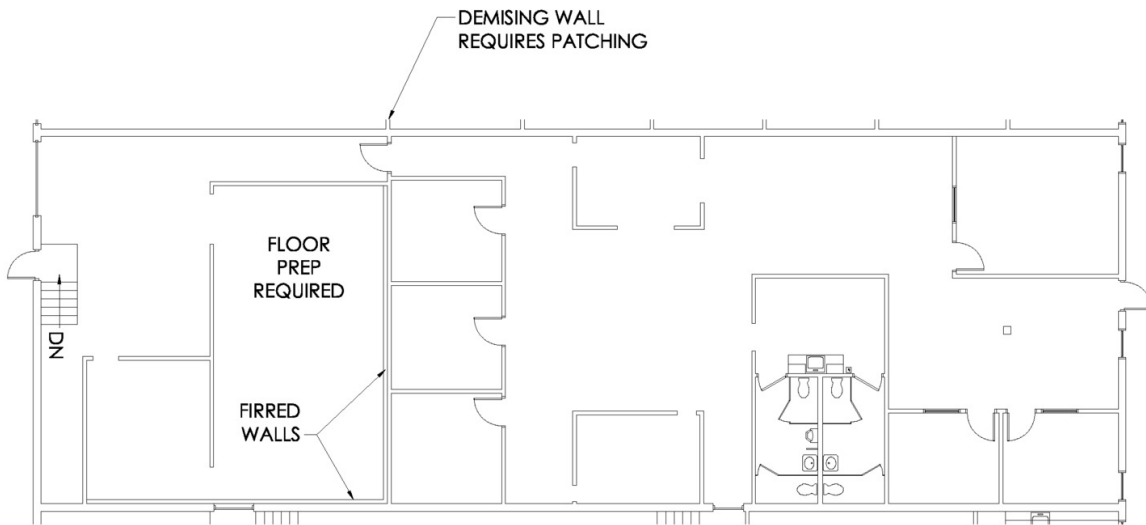
# RANKIN BUSINESS PARK - 1220-1270 RANKIN STREET

## PROPERTY **SITE PLAN**



**RANKIN BUSINESS PARK - 1220-1270 RANKIN STREET**  
**SUITE 1226 - INDUSTRIAL - DOCK DOOR**

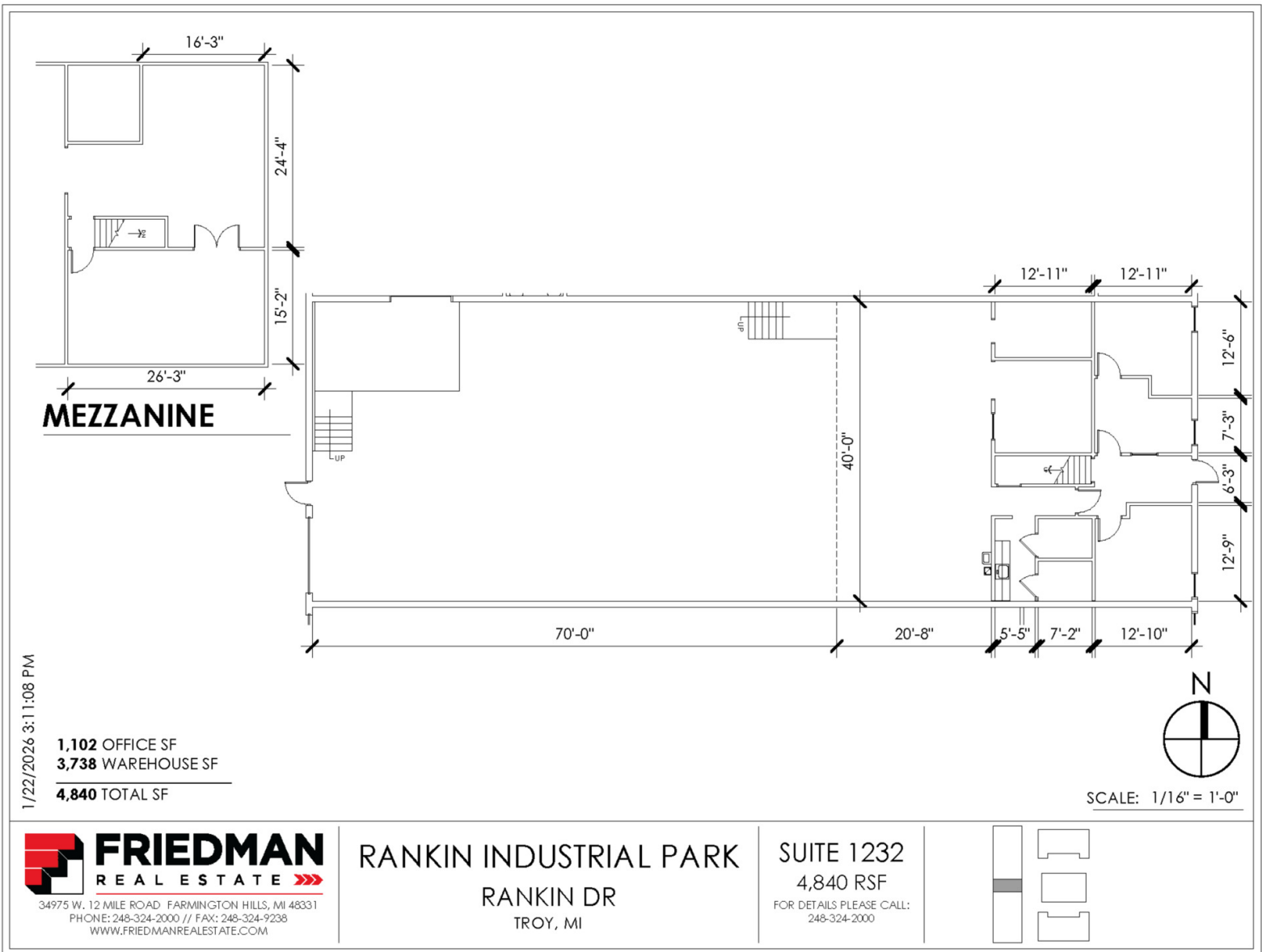
3,263 OFFICE SQFT  
1,577 WAREHOUSE SQFT  
4,840 TOTAL SQFT



SCALE :  
1/16"=1'-0"



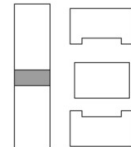
**RANKIN BUSINESS PARK - 1220-1270 RANKIN STREET**  
**SUITE 1232 - INDUSTRIAL - GRADE LEVEL DOOR**



1/22/2026 3:11:08 PM

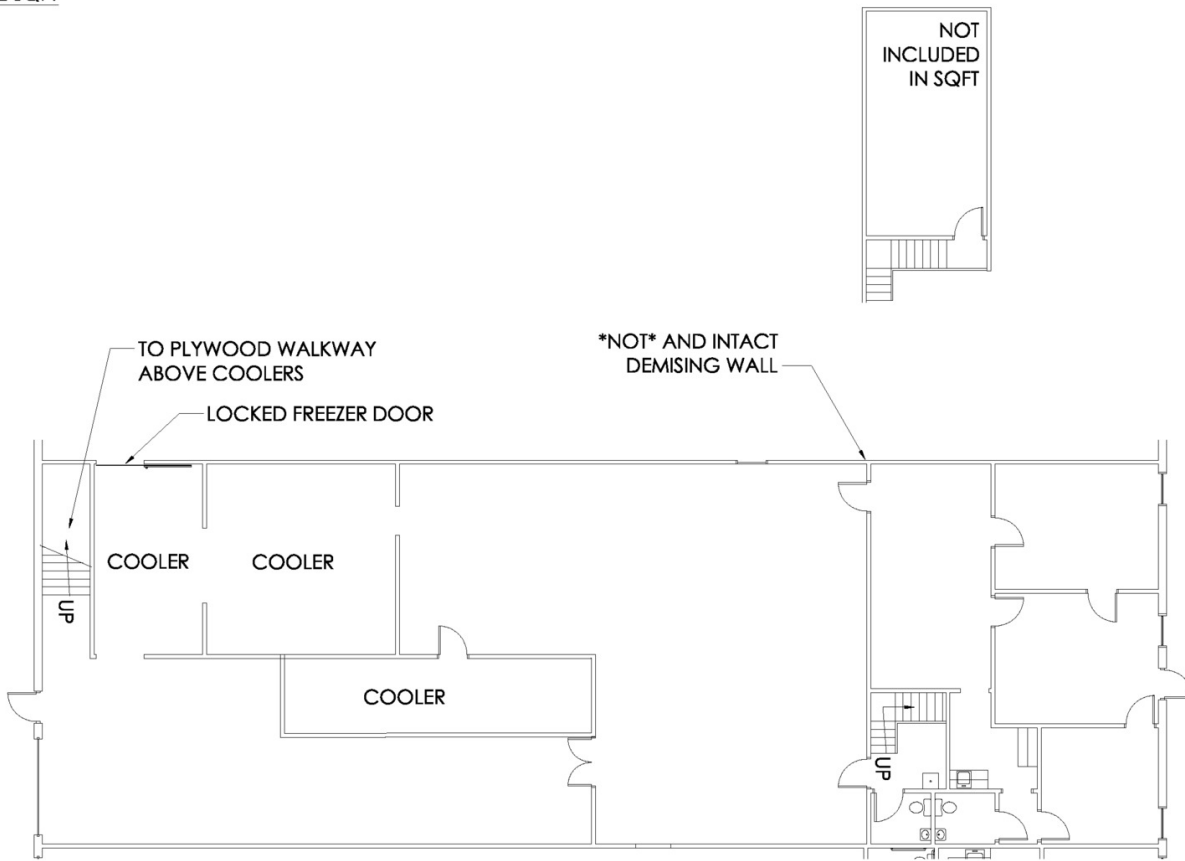
**1,102** OFFICE SF  
**3,738** WAREHOUSE SF  
**4,840** TOTAL SF

SCALE: 1/16" = 1'-0"



**RANKIN BUSINESS PARK - 1220-1270 RANKIN STREET**  
**SUITE 1240 - INDUSTRIAL - GRADE LEVEL DOOR**

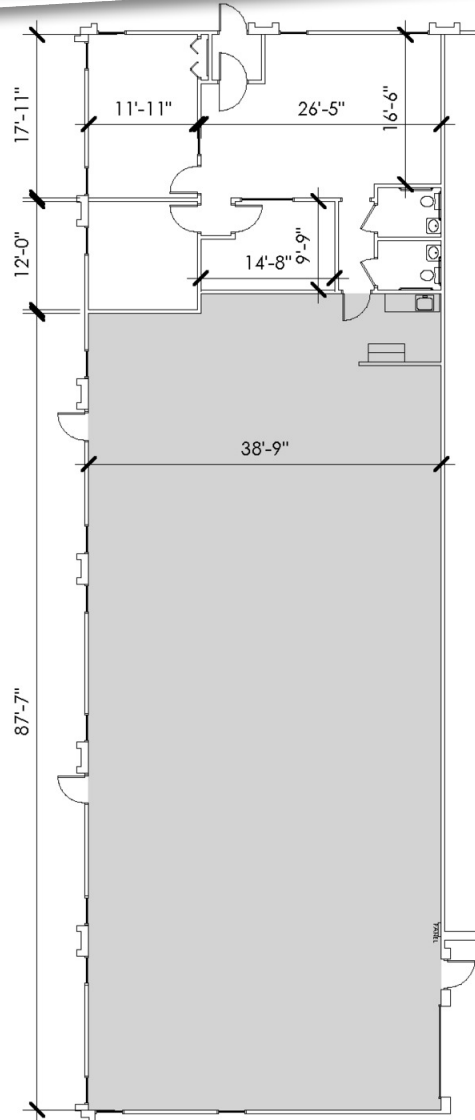
1,255 OFFICE SQFT  
3,585 WAREHOUSE SQFT  
4,840 TOTAL SQFT



SCALE:  
1/16"=1'-0"



**RANKIN BUSINESS PARK - 1220-1270 RANKIN STREET**  
**SUITE 1270A - INDUSTRIAL - GRADE LEVEL DOOR**



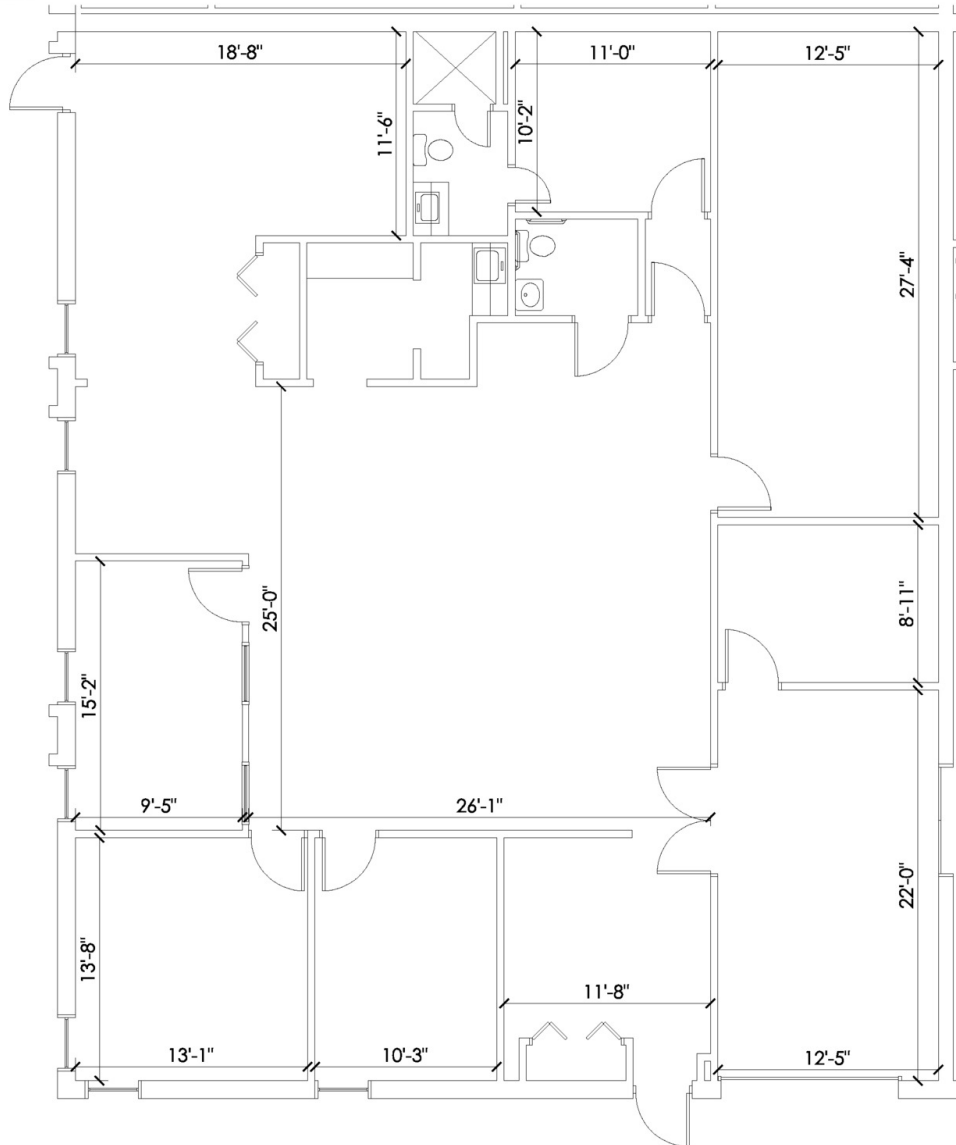
12/2/2025 4:28:58 PM

**1,160** OFFICE SF  
**3,707** WAREHOUSE SF  
**4,867** TOTAL SF



SCALE: 1/16" = 1'-0"

**RANKIN BUSINESS PARK - 1220-1270 RANKIN STREET**  
**SUITE 1260G - OFFICE**



SCALE:  
1/8"=1'-0"