

FOR LEASE

# 52210 WILLOW POINT RD

CLARKSBURG, CA 95612

*10-acres with ±15,500 SF building and office @ \$22,000/month + NNN fees (est. \$0.07/PSF) and utilities on pre-approved credit*

*±3-acre frontage portion with ±15,500 SF office/warehouse/shop and surplus yard for parking @ \$15,500/month + NNN & utilities*

Potential wine, olive oil, cider, craft beer processing facility, subject to Yolo County planning approval

Ideal River Delta location by Old Sugar Mill

Approximately 5-miles west of I-5 Freeway for access

Located in the heart of Clarksburg wine appalachia

Note: Potential Seller-financing with 50% down payment, O.A.C.

Example:

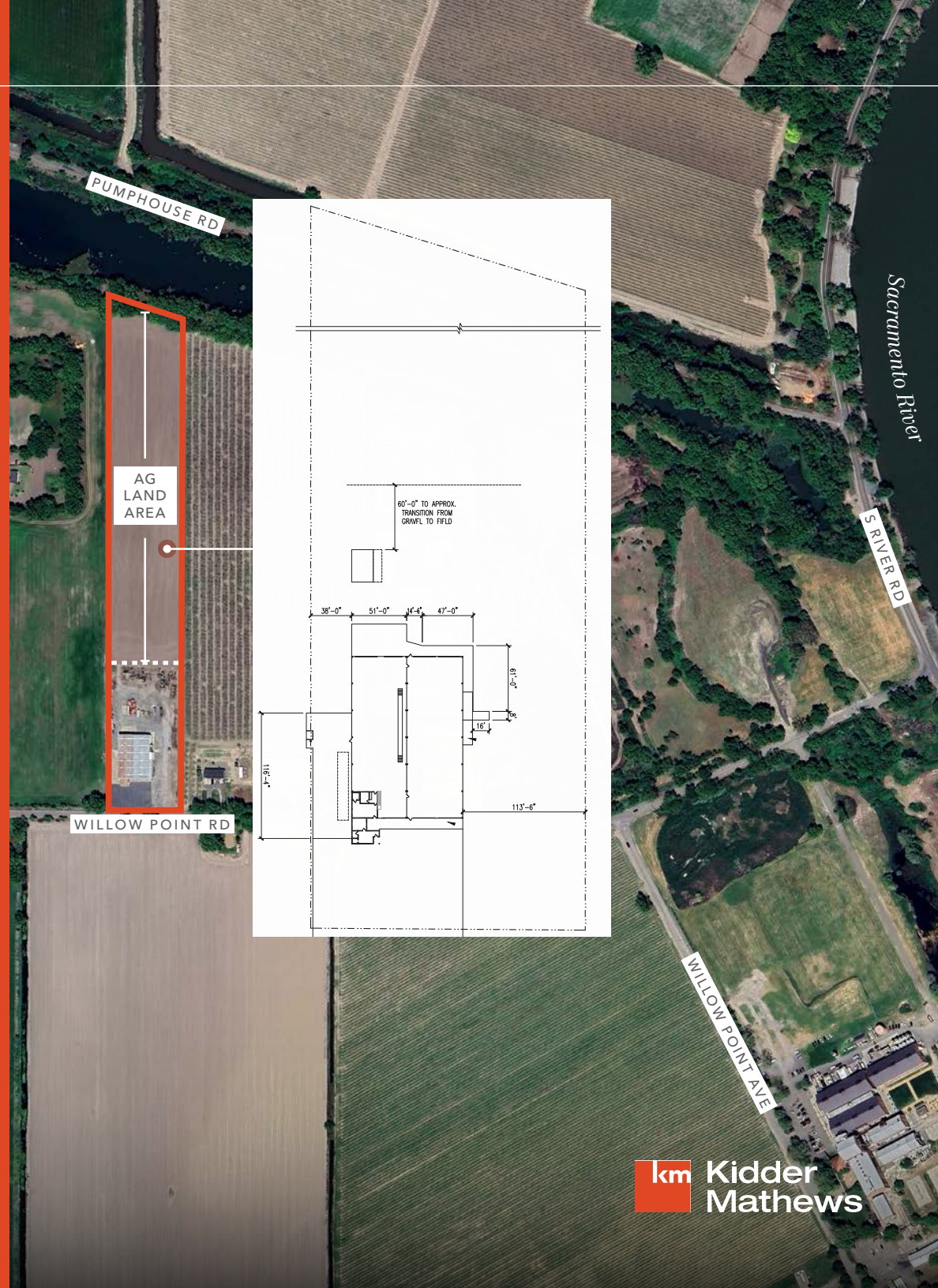
Loan of \$1,750,000 @ 5.25%, amortization 20 years, \$11,792.27/month, monthly payment. 5-year balloon payment of \$1,466,924.

Current AG Industrial zoning as per public records

JEFF POST, SIOR

916.758.3208 | jeff.post@kidder.com

LIC N° 01264304



## POTENTIAL USES FOR OWNER/ USER OR INVESTMENT BUYERS:

### **SURPLUS LAND COMPONENT:**

- Equestrian facility with pasture, paddocks and riding arena
- Pumpkin Farm w/corn maze
- Delta Organic row crop farming of vegetables for local/regional restaurants
- Delta Olive, Pears, Peaches, & nut orchards
- Delta corn, wheat, safflower, and asparagus crop fields
- Cattle, Texas longhorns, exotic Llamas pasture & paddocks ranch

### **EXISTING OFFICE & SHOP FACILITY:**

- Olive, cider, craft beers and wine tasting facility
- Custom ag harvesting operations with equipment gravel yard area
- Satellite ag office and shop for local ranch ag land crop operations

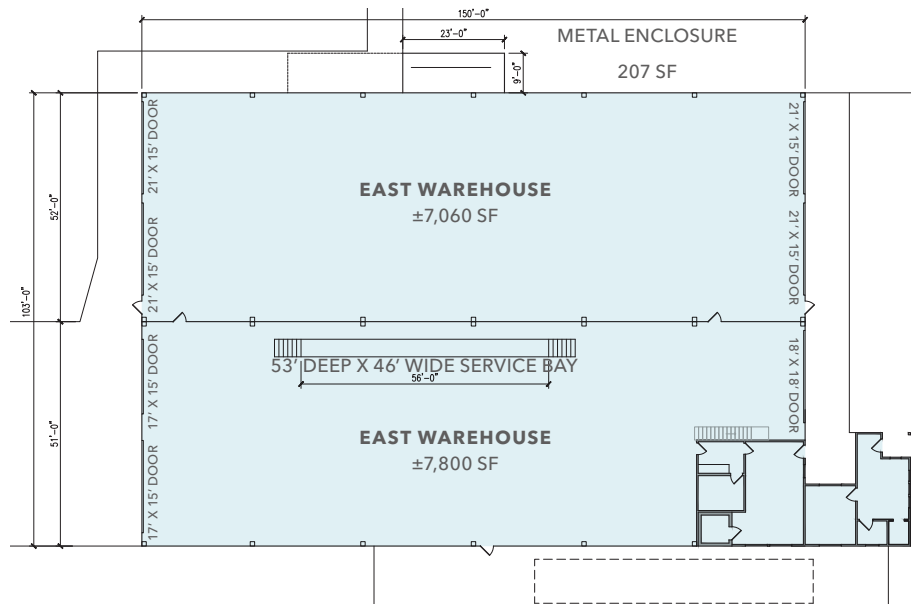
\*Above uses may be subject to Yolo County Planning review and approval.

### **KIDDER.COM**

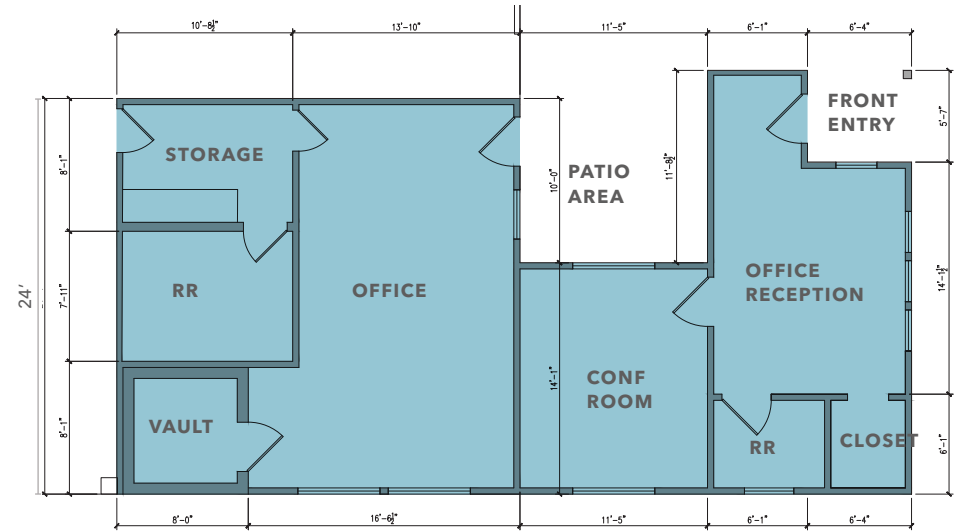
This information supplied herein is from sources we deem reliable. It is provided without any representation, warranty, or guarantee, expressed or implied as to its accuracy. Prospective Buyer or Tenant should conduct an independent investigation and verification of all matters deemed to be material, including, but not limited to, statements of income and expenses. Consult your attorney, accountant, or other professional advisor.



# BUILDING PLAN APPROX ±15,500 SF BUILDING



# FLOOR PLAN OFFICE AREA APPROX ±1,100 SF





[KIDDER.COM](http://KIDDER.COM)

This information supplied herein is from sources we deem reliable. It is provided without any representation, warranty, or guarantee, expressed or implied as to its accuracy. Prospective Buyer or Tenant should conduct an independent investigation and verification of all matters deemed to be material, including, but not limited to, statements of income and expenses. Consult your attorney, accountant, or other professional advisor.

**PROPERTY OVERVIEW**

COUNTY	Yolo County
ADDRESS	52210 Willow Point Road
LOCATION	Clarksburg, CA 95612
OWNER OF RECORD	DUTRA FAM 2006 REV TRUST
APN	043-240-003-000
2025 PROPERTY TAXES	\$6,513 (Annual Tax)
WILLIAMSON ACT	Not enrolled
TOTAL LAND AREA	±435,600 SF (±10 ACRES)
CURRENT ZONING	AG, Planned Development Commercial Overlay, AG Industrial
HIGHEST & BEST POTENTIAL USE	Wine, craft beer, cider or olive oil processing and related tasting room, music commercial use subject to Yolo County planning approval

**RESOURCES & DEVELOPMENT**

TOPOGRAPHY	Level Topography
SOILS TYPE	Normal , W
WATER	Private domestic well, Reclamation District 999 (no AG well available)
FLOOD ZONE	A (1/2-mile west of Sacramento River)
BUILDING	±15,500 SF 2-Bay Shop & office
UTILITIES	PG&E Electric and Sheldon propane tank

**PROPERTY HIGHLIGHTS**

±15,500 SF Metal Warehouse on  
±3-AC of ±10-AC Parcel

±7-AC Ag Land Area

±1,100 SF of office space

Minimum clear height 17' to 23.5'

3 grade level doors

5 ton rolling crane

*1 MILE WALK*

TO SACRAMENTO RIVER

**KIDDER.COM**

This information supplied herein is from sources we deem reliable. It is provided without any representation, warranty, or guarantee, expressed or implied as to its accuracy. Prospective Buyer or Tenant should conduct an independent investigation and verification of all matters deemed to be material, including, but not limited to, statements of income and expenses. Consult your attorney, accountant, or other professional advisor.





**DEMOGRAPHICS - WEST SACRAMENTO**

POPULATION	55,871
POPULATION EST. 2029	57,881
HOUSEHOLDS	20,318
HOUSEHOLDS POPULATION EST. 2029	21,235
MEDIAN INCOME	\$90,423
MEDIAN INCOME EST. 2029	\$105,365

**DEMOGRAPHICS - CLARKSBURG**

POPULATION	373
POPULATION EST. 2029	391
HOUSEHOLDS	157
HOUSEHOLDS POPULATION EST. 2029	152
MEDIAN INCOME	\$114,517
MEDIAN INCOME EST. 2029	\$157,247



[KIDDER.COM](https://www.kidder.com)

This information supplied herein is from sources we deem reliable. It is provided without any representation, warranty, or guarantee, expressed or implied as to its accuracy. Prospective Buyer or Tenant should conduct an independent investigation and verification of all matters deemed to be material, including, but not limited to, statements of income and expenses. Consult your attorney, accountant, or other professional advisor.



*Exclusively listed by*

**JEFF POST, SIOR**  
916.758.3208  
jeff.post@kidder.com

LIC N° 01264304

**KIDDER.COM**