



MARMALADE OFFICE BUILDING

244 West 300 North, Salt Lake City, UT 84103

PROPERTY DESCRIPTION:

- Rare Ground Level ADA Space Available
- Multiple Floorplan Options
- Numerous Windows Offer Abundant Natural Light
- Bullpen Floor Plan with a Combination of Single Offices, Individual Private Meeting Rooms and Open Collaborative Space
- Private Restrooms with Shower & Lockers
- Free On-Site Parking of 2 Stalls/1,000 SF, with Additional Ample Street Parking
- Convenient Location in Up-and-Coming Marmalade District
- Prime Freeway Access off of 600 North
- Minutes from the Heart of Downtown with Abundant Amenities and 8 Minutes from SLC Airport

LEASE RATE:

\$12 - 23.50 SF/yr
(Full Service)

PROPERTY DETAILS:

Suite 102: 1,896 SF
Suite 205: 1,096 SF

CHRISTIAN PRISKOS, CCIM

801.573.8500

christian@iproperties.com

CHRIS METOS

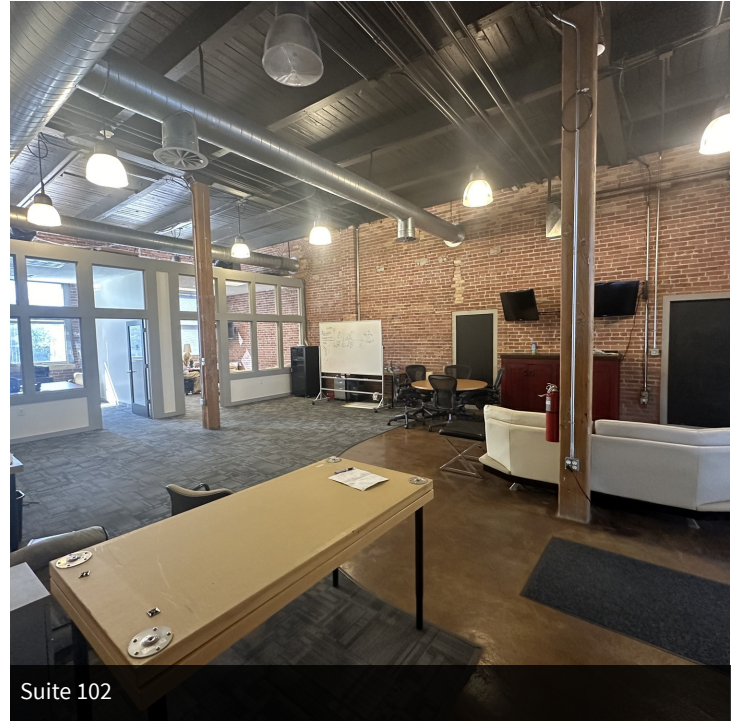
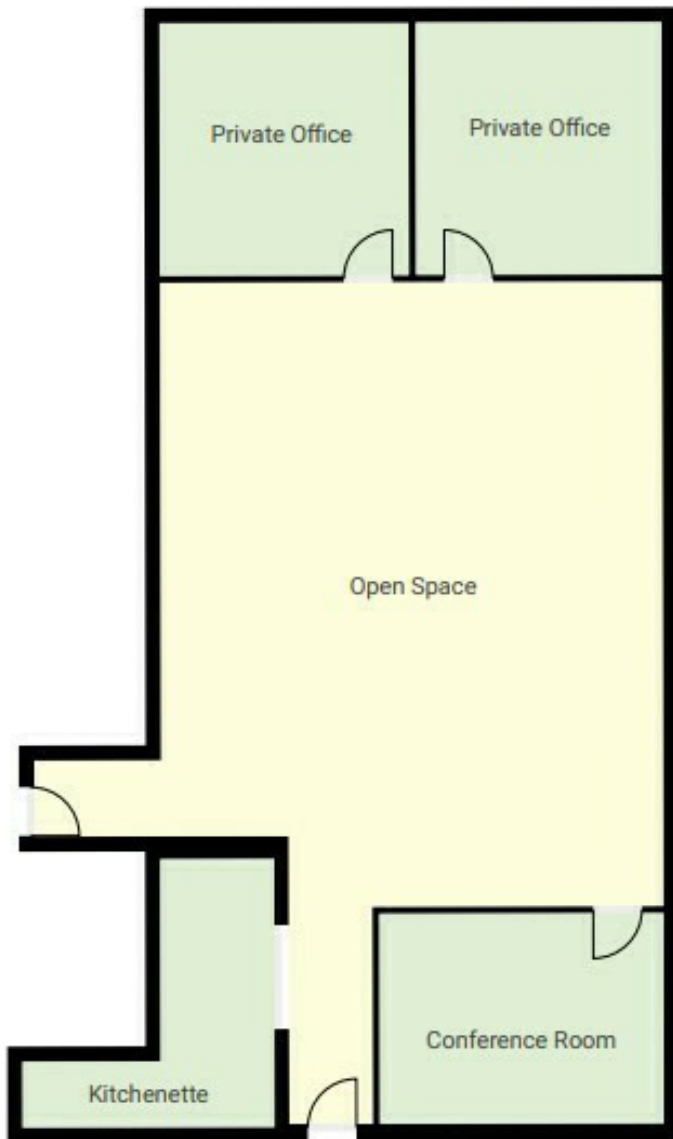
801.879.7870

chris@iproperties.com

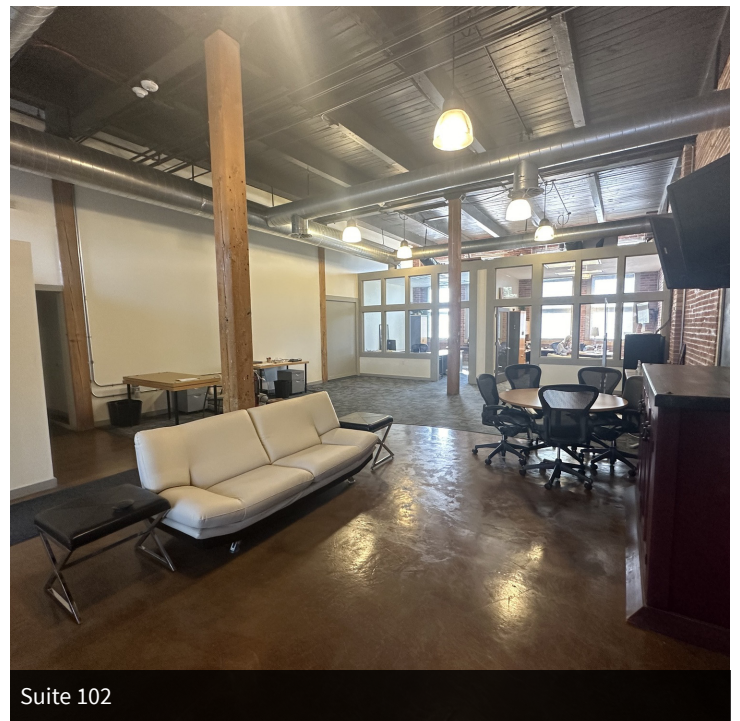
51 East 400 South Suite 210

Salt Lake City, UT 84111

801.355.0600 | iproperties.com



Suite 102



Suite 102

Suite 102 Floor Plan



Suite 205 (Purple) Floor Plan



Suite 205

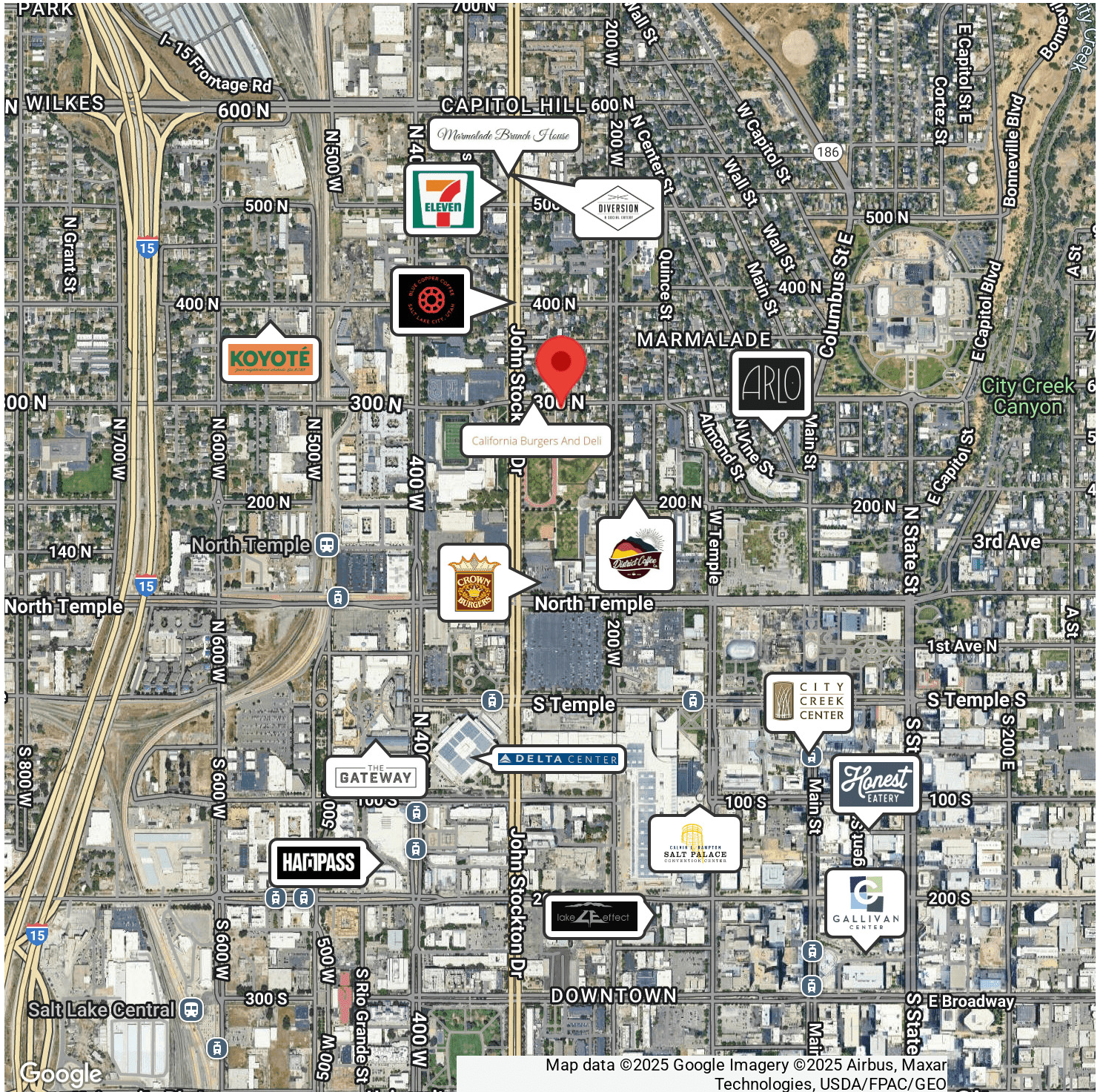


Suite 205

CHRISTIAN PRISKOS, CCIM
801.573.8500
christian@iproperties.com

CHRIS METOS
801.879.7870
chris@iproperties.com

51 East 400 South Suite 210
Salt Lake City, UT 84111
801.355.0600 | iproperties.com



CHRISTIAN PRISKOS, CCIM
801.573.8500
christian@iproperties.com

CHRIS METOS
801.879.7870
chris@iproperties.com

51 East 400 South Suite 210
Salt Lake City, UT 84111
801.355.0600 | iproperties.com