

FOR LEASE

5,952 SF | \$1.60/SF NNN

PRICE REDUCTION



5403 S HOOVER ST & 800 W 54TH ST
LOS ANGELES, CA 90037

EXCLUSIVELY
LISTED BY

KATERINA KAMAR

Senior Associate
310.878.6920
kkamar@naicapital.com
Cal DRE Lic.#02111409

NAICapital
COMMERCIAL REAL ESTATE SERVICES, WORLDWIDE

PROPERTY DETAILS

5403 S HOOVER ST & 800 W 54TH ST occupies a prominent signalized corner at 54th St and Hoover, offering exceptional visibility, strong traffic flow, and approximately 130 feet of valuable frontage along Hoover St. Boasting a highly visible presence with consistent foot traffic, the property provides an ideal setting for retail success. Its versatile layout and modern design create a blank canvas for a standout retail environment, while ample parking and convenient ingress/egress enhance the experience for both tenants and customers. With its strategic positioning, multi-directional exposure, and strong neighborhood presence, this corner location is perfectly poised to elevate retail businesses within a thriving urban corridor.



Approximately 130' of frontage along Hoover St



Spacious and versatile floor plan



High visibility and foot traffic



Currently built out for a Laundry Mat (can be converted into shell space)



Located next to Young's Neighborhood Grocery Market driving traffic to the property

PROPERTY SUMMARY

5403 S HOOVER ST & 800 W 54TH ST
LOS ANGELES, CA 90037

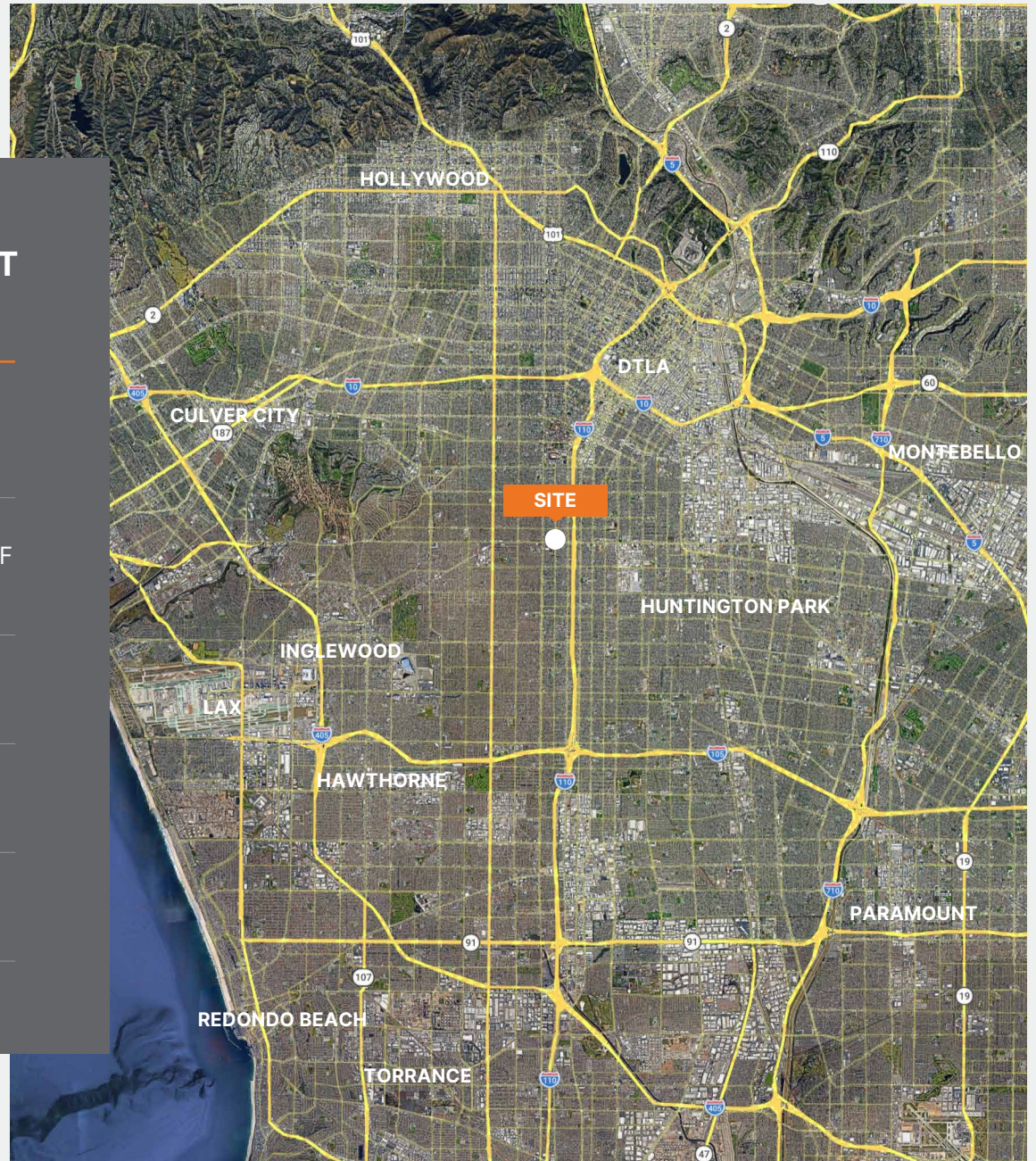
Total Building Area SF: 5,952 SF

Available Units: 5403 S Hoover St: 3,003 SF
800 W 54th St: 2,949 SF

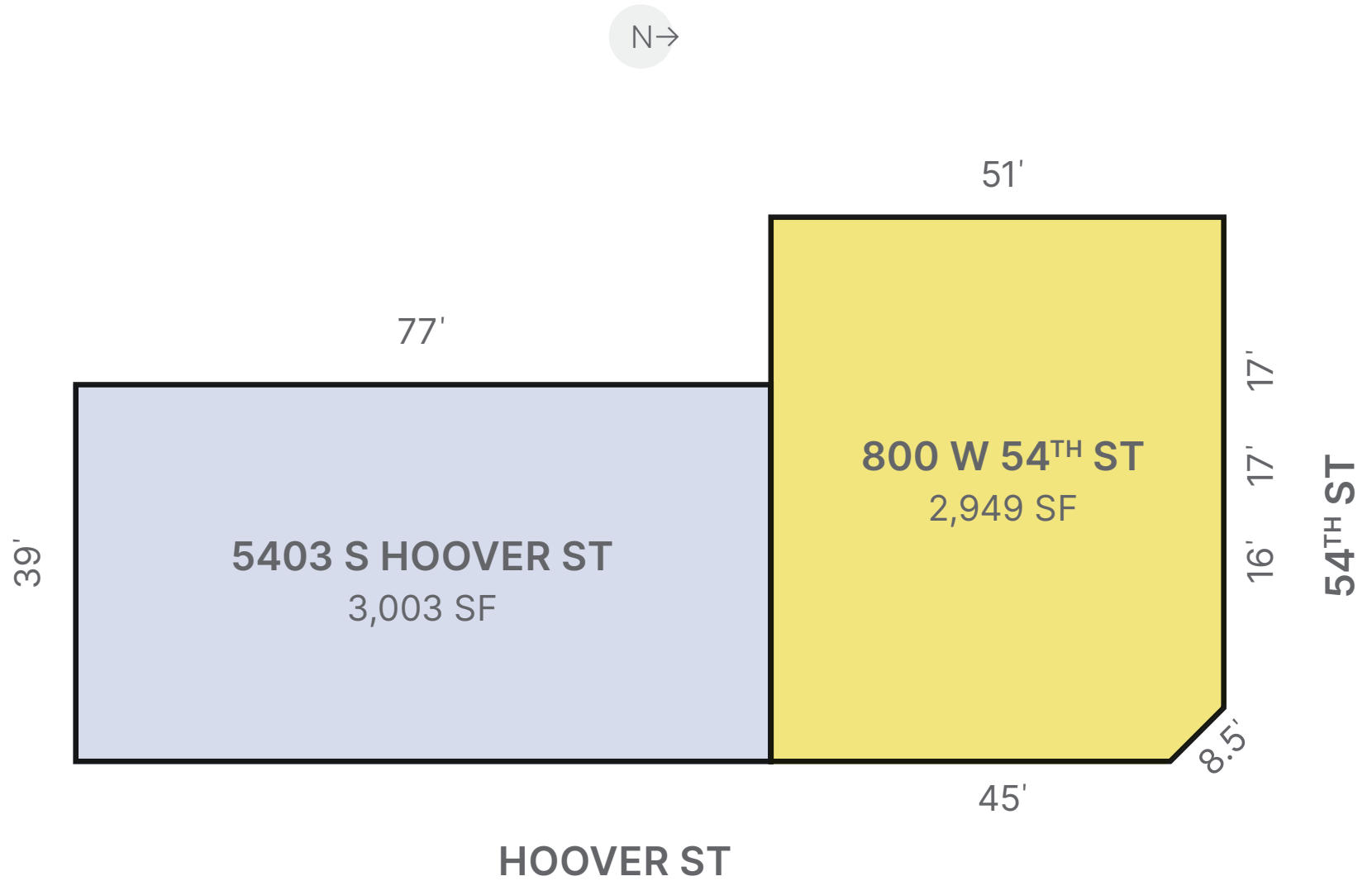
Total Lot SF: 7,716 SF

Price /SF: \$1.60/SF NNN

Zoning: LAC2



FLOOR PLAN



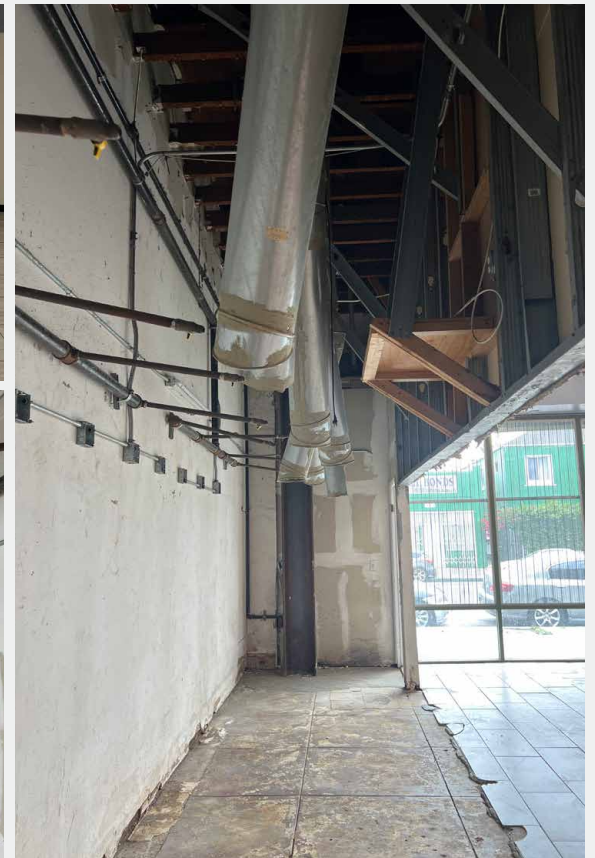
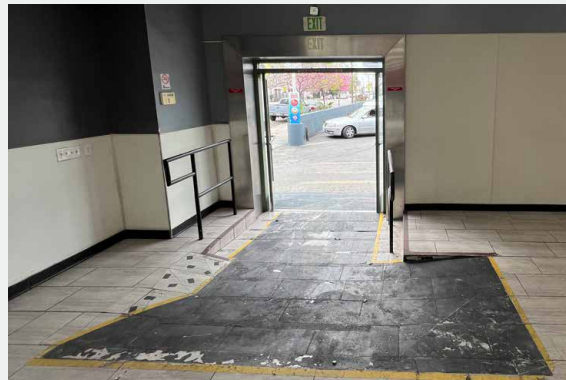
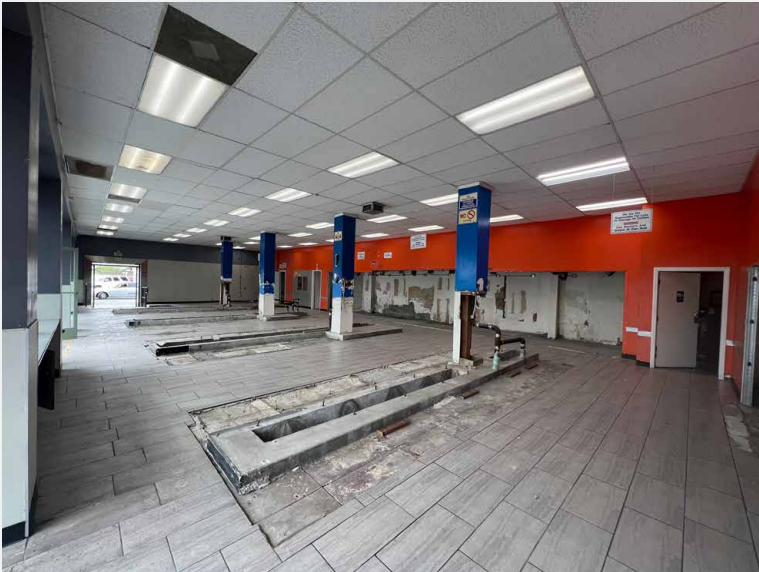
PARCEL MAP



PROPERTY PHOTOS



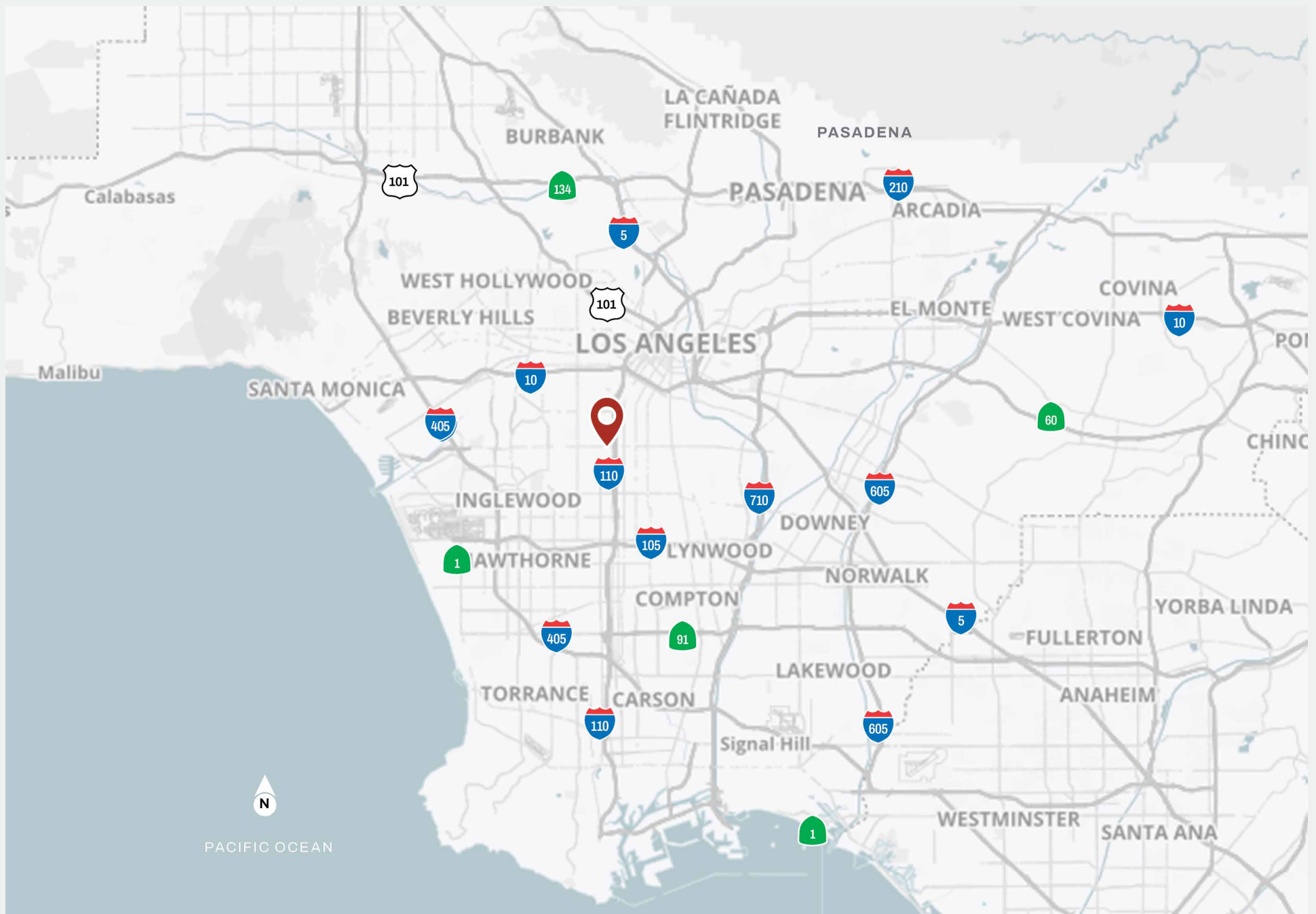
INTERIOR PHOTOS | 5403 S HOOVER ST (PREVIOUS LAUNDROMAT, CALL BROKER FOR DETAILS)



INTERIOR PHOTOS | 800 W 54TH ST



LOCATION MAP



RETAILER MAP



AERIAL MAP



FOR LEASE

5,952 SF | \$1.60/SF NNN

5403 S HOOVER ST & 800 W 54TH ST
LOS ANGELES, CA 90037

EXCLUSIVELY
LISTED BY

KATERINA KAMAR
Senior Associate
310.878.6920
kkamar@naicapital.com
Cal DRE Lic.#02111409

NAI CAPITAL
970 W 190TH St
Suite 100
Torrance, CA 90502
naicapital.com

No warranty, express or implied, is made as to the accuracy of the information contained herein. This information is submitted subject to errors, omissions, change of price, rental or other conditions, withdrawal without notice, and is subject to any special listing conditions imposed by our principals. Cooperating brokers, buyers, tenants and other parties who receive this document should not rely on it, but should use it as a starting point of analysis, and should independently confirm the accuracy of the information contained herein through a due diligence review of the books, records, files and documents that constitute reliable sources of the information described herein. Logos are for identification purposes only and may be trademarks of their respective companies. NAI Capital, Inc. Cal DRE Lic. #02130474.

NAI Capital
COMMERCIAL REAL ESTATE SERVICES, WORLDWIDE