

PARKING SPACES		STANDARD PARKING DIMENSIONS		ACCESSIBLE SPACES REQUIRED	
35 (AUTO) (27.1%)		SPRINTER VAN SPACE: 11 FT x 27 FT		AUTO: 26-50 SPACES =	
2 (AUTO ACCESSIBLE) (1.6%)		AUTO SPACE: 9 FT x 19 FT		2 SPACES (1 STANDARD, 1 VAN)	
TOTAL = 37 SPACES		AUTO ACCESSIBLE: 8 FT x 19 FT		SPRINTER VAN: 76-100 SPACES =	
88 (SPRINTER VAN) (68.2%)		SPRINTER VAN ACCESSIBLE: 11 FT x 27 FT		4 SPACES	
4 (SPRINTER VAN ACCESSIBLE) (3.1%)					
TOTAL = 92 SPACES					
129 SPACES (TOTAL)					

REVISIONS				
REV	DATE	COMMENT	CHECKED BY	DRAWN BY
1	09/15/21	REVISED SITE GRADING	BEJ	MMW



ALWAYS CALL 811  
It's fast. It's free. It's the law.

**ISSUED FOR CONSTRUCTION**

THIS DRAWING IS INTENDED FOR MUNICIPAL AND/OR AGENCY REVIEW AND APPROVAL. IT IS NOT INTENDED AS A CONSTRUCTION DOCUMENT UNLESS INDICATED OTHERWISE.

PROJECT No.: M201076  
 DRAWN BY: ACL  
 CHECKED BY: MMW  
 DATE: 09/24/2021  
 CAD ID: M201076-CVL

**PROPOSED SITE PLAN DOCUMENTS**

FOR  
 The Davis Companies  
 PROPOSED DEVELOPMENT  
 217 BEACHAM STREET  
 CITY OF EVERETT  
 MIDDLESEX COUNTY, MA

**BOHLER**

45 FRANKLIN STREET, 5th FLOOR  
 BOSTON, MA 02110  
 Phone: (617) 849-8040  
 www.BohlerEngineering.com

**MARK M. WIXTED**

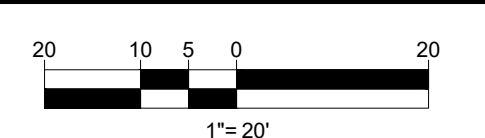
PROFESSIONAL ENGINEER  
 MASSACHUSETTS LICENSE No. 41798

**MARKETING SITE LAYOUT PLAN**

SHEET NUMBER:  
**C-201**

REVISION 1 - 09/15/2021

**THIS PLAN TO BE UTILIZED FOR SITE LAYOUT PURPOSES ONLY. REFER TO GENERAL NOTES SHEET FOR ADDITIONAL NOTES**



P:\DWG\2019\DRAWINGS\PLAN SETS\M201076\CVL\---LAYOUT-C-201-SITE.M