

3,013 SF SUBLEASE AVAILABLE

RAMS PLAZA

RETAIL/MEDICAL FOR SUBLEASE

1728 FORDHAM BOULEVARD, CHAPEL HILL, NC 27514

BRIAN FARMER, SIOR

bfarmer@lee-associates.com

O 919.576.2503

C 919.730.6584

CHRISTINA COFFEY

ccoffey@lee-associates.com

O 919.591.2273

C 919.522.9915

**LEE &
ASSOCIATES**

COMMERCIAL REAL ESTATE SERVICES
RALEIGH • DURHAM • WILMINGTON

All information furnished regarding property for sale, rental or financing is from sources deemed reliable, but no warranty or representation is made to the accuracy thereof and same is submitted to errors, omissions, change of price, rental or other conditions prior to sale, lease or financing or withdrawal without notice. No liability of any kind is to be imposed on the broker herein.

PROPERTY OVERVIEW

PROPERTY DESCRIPTION

Rams Plaza is part of Chapel Hill's newest mixed-use destination – the Blue Hill District. It's a place you can live, shop, dine, and work. Rams Plaza is anchored by a 35,000 SF Food Lion Grocery, a CVS Pharmacy, and has first class co-tenants including Sola Salons, Monterrey and many others.

This first class sublease provides an opportunity for a medical or retail tenant to immediately occupy a fully built out space in the prime Chapel Hill market.

HIGHLIGHTS

- **Unit 151: 3,013 SF Retail/Medical Space for Sublease**
- 107,600 SF, grocery-anchored center
- Fully built out and lightly used medical space
- Abundant exam rooms with sinks, cabs, lab, and infrastructure
- Sublease expires June 2029
- Signage on building
- Lease rate: \$30.00/SF, NNN

RAMS PLAZA STATS

1.8M
VISITS/YR

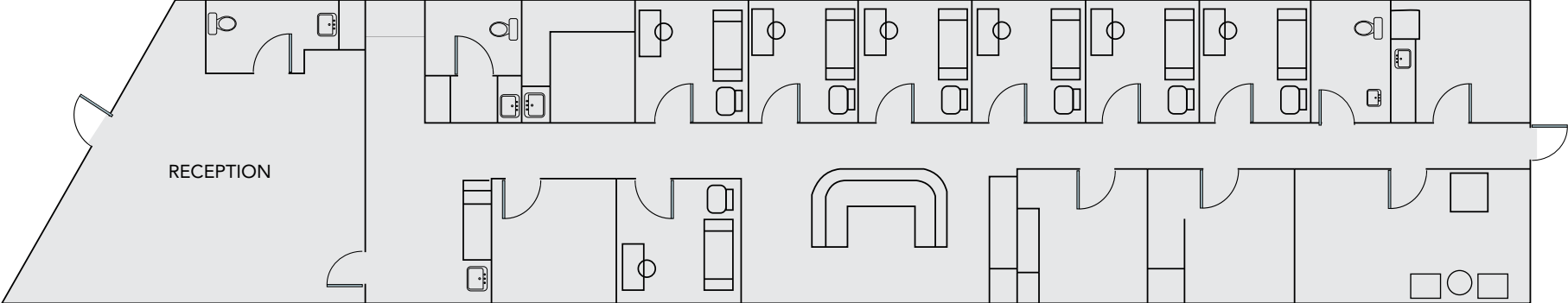
69.3%
BACHELOR'S
DEGREE OR HIGHER

\$97.4K
MEDIAN HH
INCOME

(PLACER.AI)



FLOORPLAN



FOR SUBLEASE | RAMS PLAZA - 1728 FORDHAM BOULEVARD, CHAPEL HILL, NC

INTERIOR PHOTOS



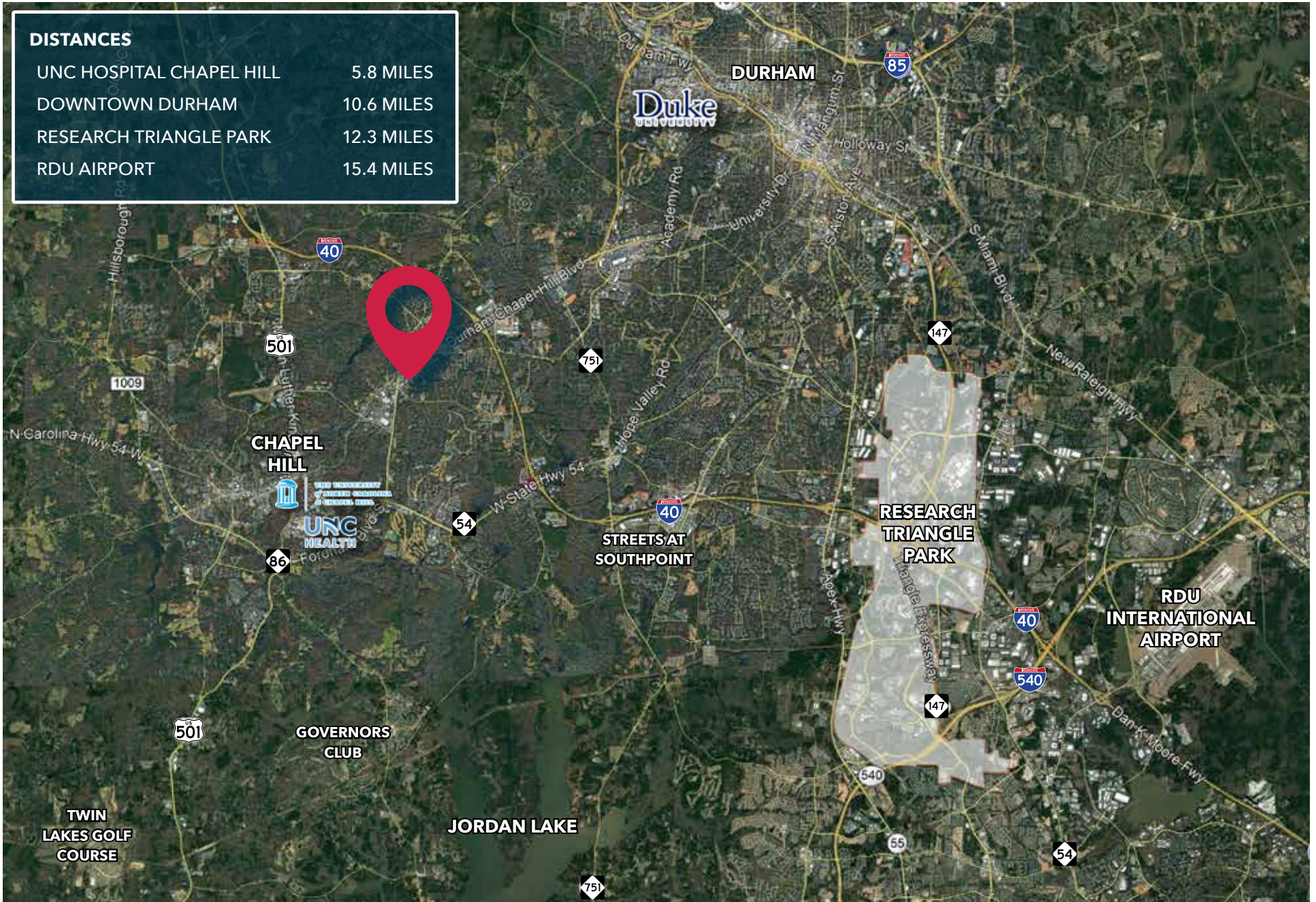
FOR SUBLEASE | RAMS PLAZA - 1728 FORDHAM BOULEVARD, CHAPEL HILL, NC

AREA AMENITIES

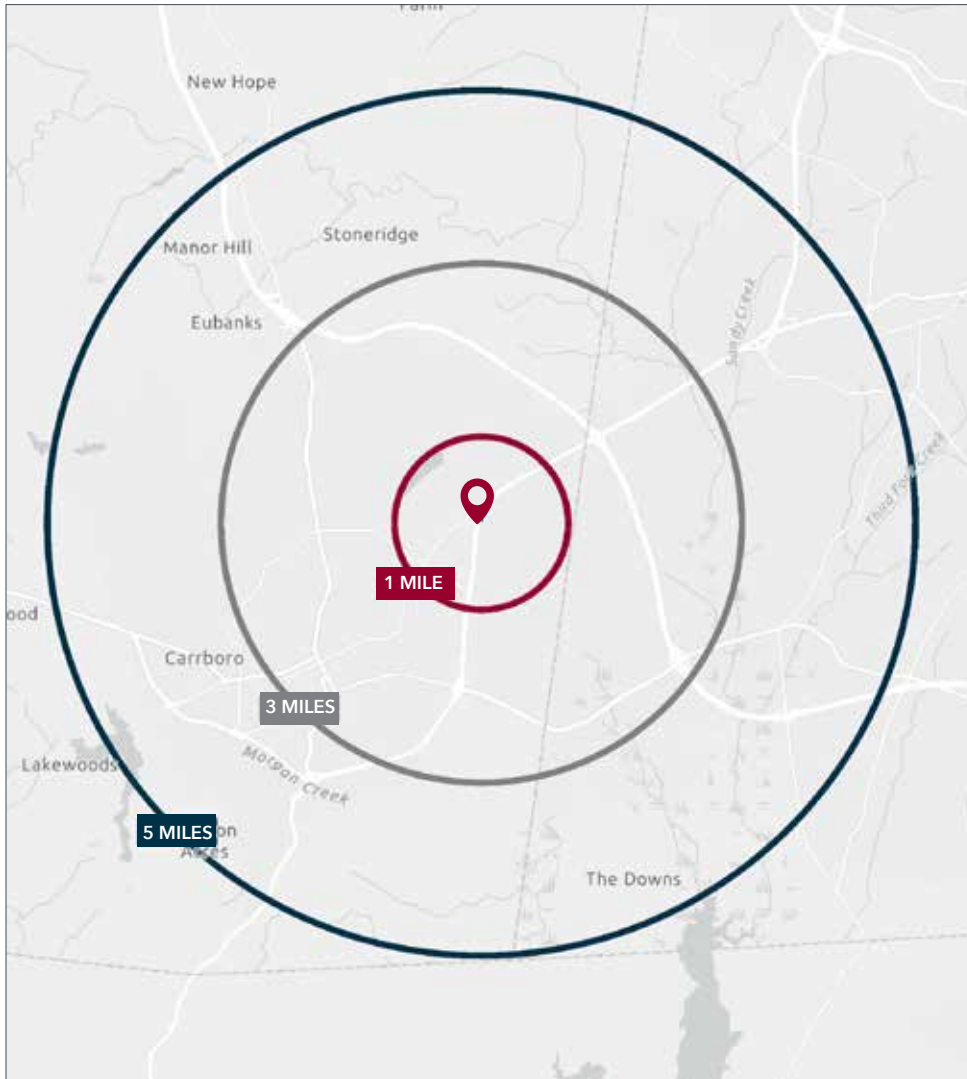


FOR SUBLEASE | RAMS PLAZA - 1728 FORDHAM BOULEVARD, CHAPEL HILL, NC

AREA OVERVIEW



DEMOGRAPHICS



	1 MILE	3 MILES	5 MILES
Population (2025)	11,702	66,863	136,334
Daytime Population	14,502	97,979	163,777
Median Age	32.7	37.0	32.7
Median Household Income	\$86,948	\$92,641	\$97,132
Median Home Value	\$490,895	\$600,494	\$569,877

